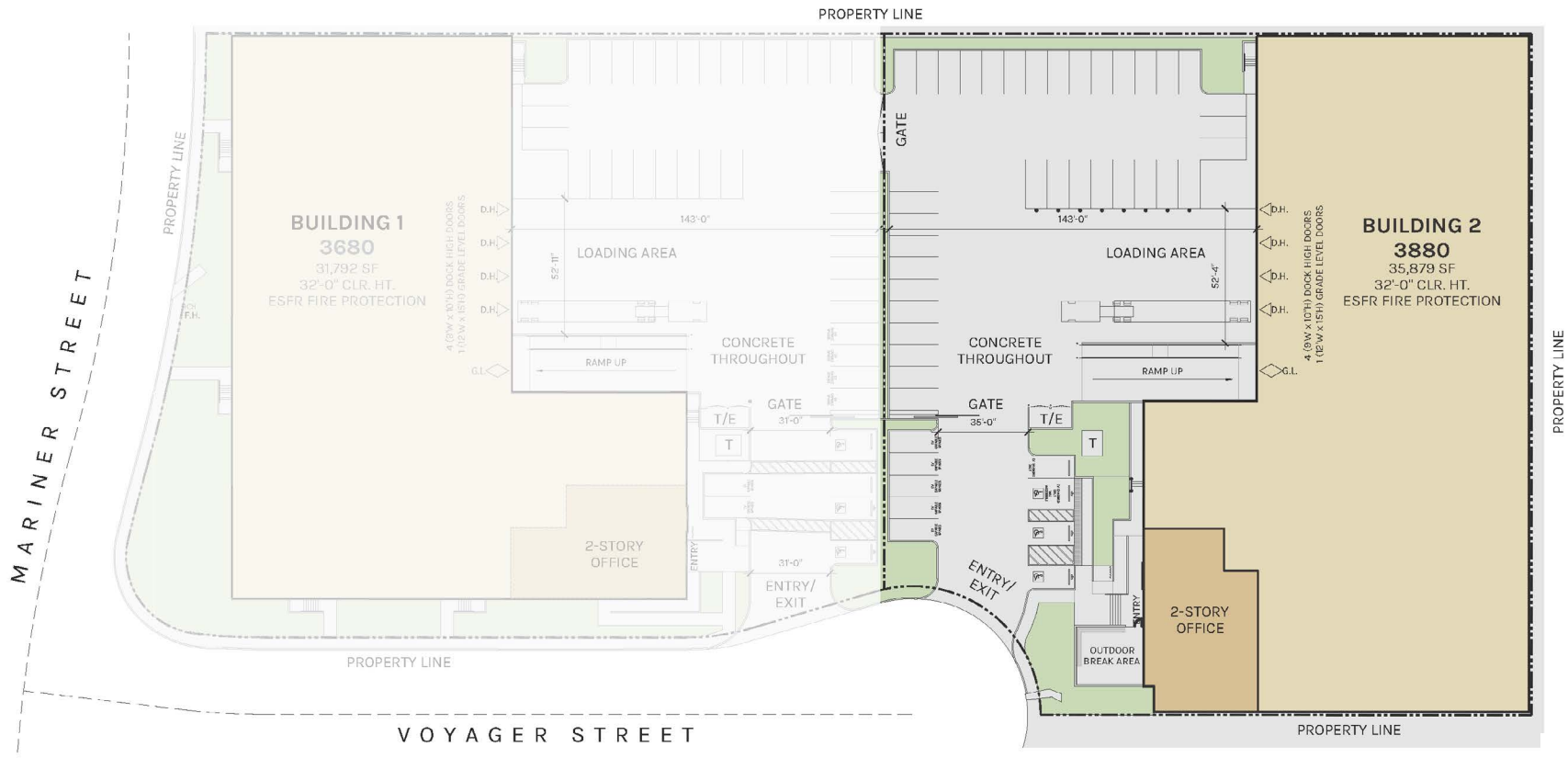


NEW CONSTRUCTION
CLASS A FEATURES AND FINISHES
HEAVY POWER



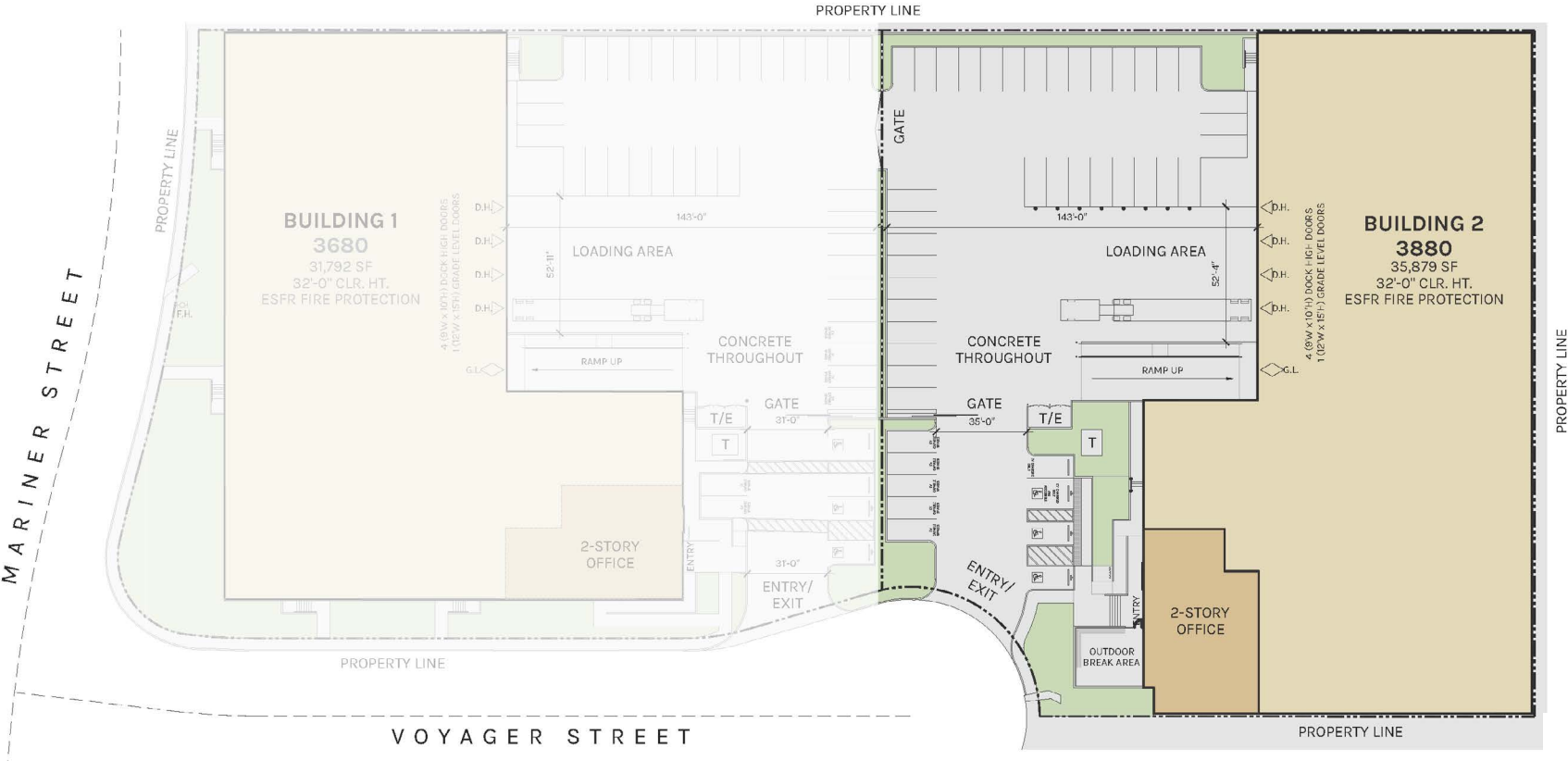
35,879 SF AVAILABLE FOR LEASE

CLASS A LEED CERTIFIED BUILDING – Q2 2026 DELIVERY
3880 Voyager Street | Torrance, CA



- 35,879 SF brand new high image building
- 32' minimum clear height/ESFR fire sprinkler system
- 4 dock high doors -143 foot truck court
- 1 grade level door
- 3,000 Amp capacity

- Terrific Central Torrance location
- 20 miles to Beverly Hills
- Best-in-class office finishes
- 44 car parking spaces
- Owned and developed by Rexford Industrial



BUILDING 2
35,879 SF

LAND
64,256 SF

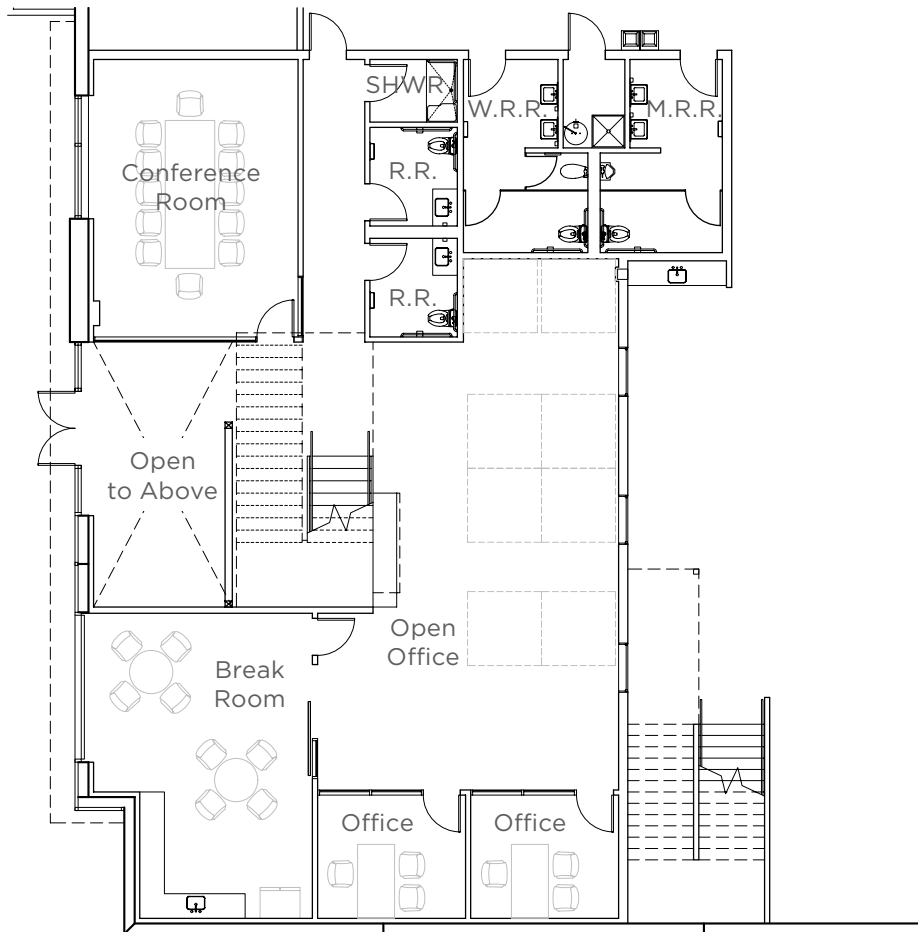
TRUCK COURT
143 FEET DEEP

PLAN LAYOUT SUBJECT TO FIELD CONDITIONS AND MAY DIFFER FROM PLAN AS SHOWN. ALL INFORMATION PRESENTED ON THIS DRAWING IS PRESUMED TO BE ACCURATE, HOWEVER TENANT SHOULD VERIFY PERTINENT INFORMATION PRIOR TO COMMITTING TO A LEASE. ANY FURNITURE OR APPLIANCES SHOWN ON PLAN ARE FOR CONCEPT ONLY AND WILL BE TENANT PROVIDED.



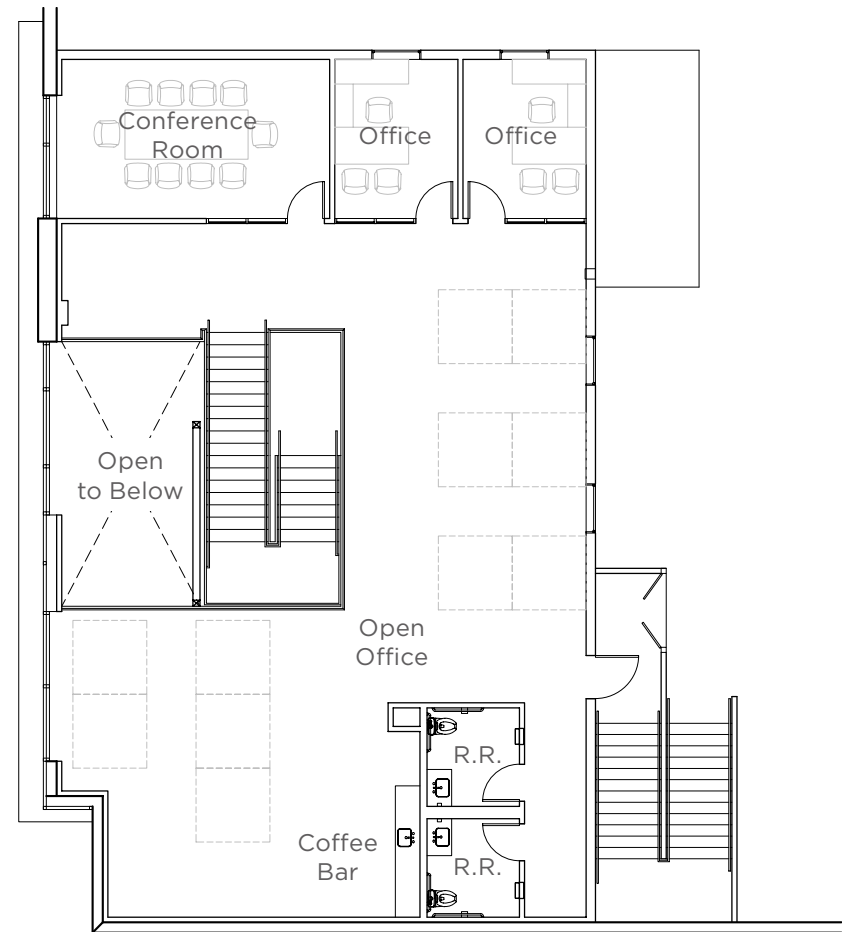
GROUND FLOOR OFFICE

2,914 SF



MEZZANINE OFFICE

2,717 SF

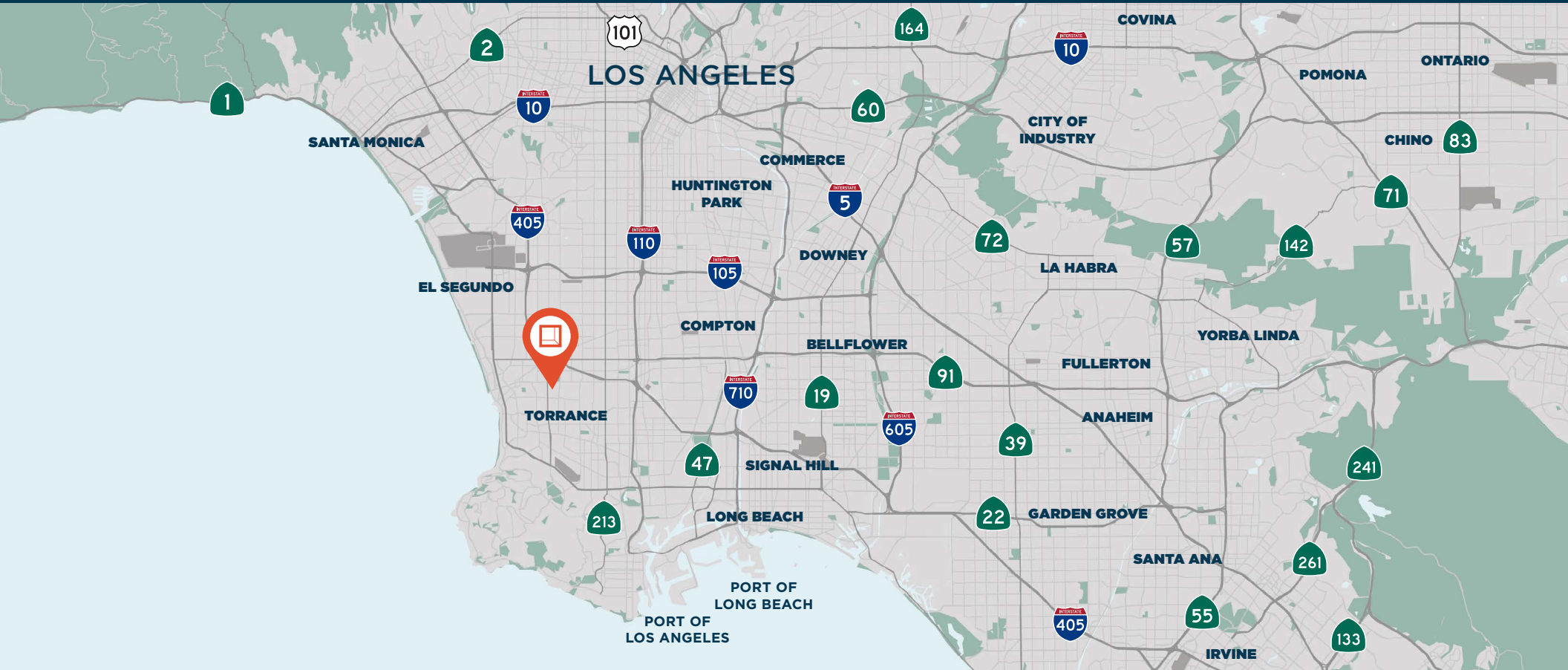


WAREHOUSE
30,248 SF

OFFICE
5,631 SF

TOTAL
35,879 SF

PLAN LAYOUT SUBJECT TO FIELD CONDITIONS AND MAY DIFFER FROM PLAN AS SHOWN. ALL INFORMATION PRESENTED ON THIS DRAWING IS PRESUMED TO BE ACCURATE, HOWEVER TENANT SHOULD VERIFY PERTINENT INFORMATION PRIOR TO COMMITTING TO A LEASE. ANY FURNITURE OR APPLIANCES SHOWN ON PLAN ARE FOR CONCEPT ONLY AND WILL BE TENANT PROVIDED.



Property Highlights

- Ideal South Bay location
- Immediate access to 110, 405, 105 & 91 freeways
- Population of 12 million people within a 35 mile radius
- Premier corporate headquarters
- City of Torrance

4 Miles
to Palos Verdes

2 Miles
to I-405

3 Miles
to Manhattan Beach

5 Miles
to SpaceX

6 Miles
to LAX

.2 Miles
to In-N-Out-Burger

8 Miles
to Ports of Long
Beach & Los Angeles

20 Miles
to Beverly Hills

16 Miles
to DTLA



**Rexford
Industrial**

Leasing Contacts

ANDREW DILFER, SIOR, GLS

Executive Vice President

310.906.3280

andrew.dilfer@kidder.com

LIC # 01455665

HARVEY BEESEN, SIOR

Executive Vice President

310.906.3264

harvey.beesen@kidder.com

LIC # 00707919

LUKE STAUBITZ, SIOR

Executive Vice President

310.906.3288

luke.staubitz@kidder.com

LIC # 01037737



Kidder Mathews

2101 Rosecrans Ave, Suite 1250

El Segundo, CA 90245

310.807.0080

www.kidder.com

This information supplied herein is from sources we deem reliable. It is provided without any representation, warranty, or guarantee, expressed or implied as to its accuracy. Prospective Buyer or Tenant should conduct an independent investigation and verification of all matters deemed to be material, including, but not limited to, statements of income and expenses. Consult your attorney, accountant, or other professional advisor.