

**Builder Notice**

To the best of our knowledge these plans are drawn to comply with owner's and/or builders specifications and any changes made on them after prints are completed will be done at the owner's and/or builders expense and responsibility. The contractor shall verify all dimensions and enclosed drawing. J & D designs is not liable for errors once construction has begun. While every effort has been made in the preparation of this plan to avoid mistakes, the maker can not guarantee against human error. The contractor of the job must check all dimensions and other details prior to construction and be solely responsible thereafter.

Builder:

1022 E. Tyler Suite #3  
Harlingen, Texas 78550  
Office: (956) 425-6604  
E-mail: janddesigns@att.net

Javier Martinez (956) 345-5151  
Ignacio Martinez (956) 245-7106



**CHTOEJ ENTERPRISES**

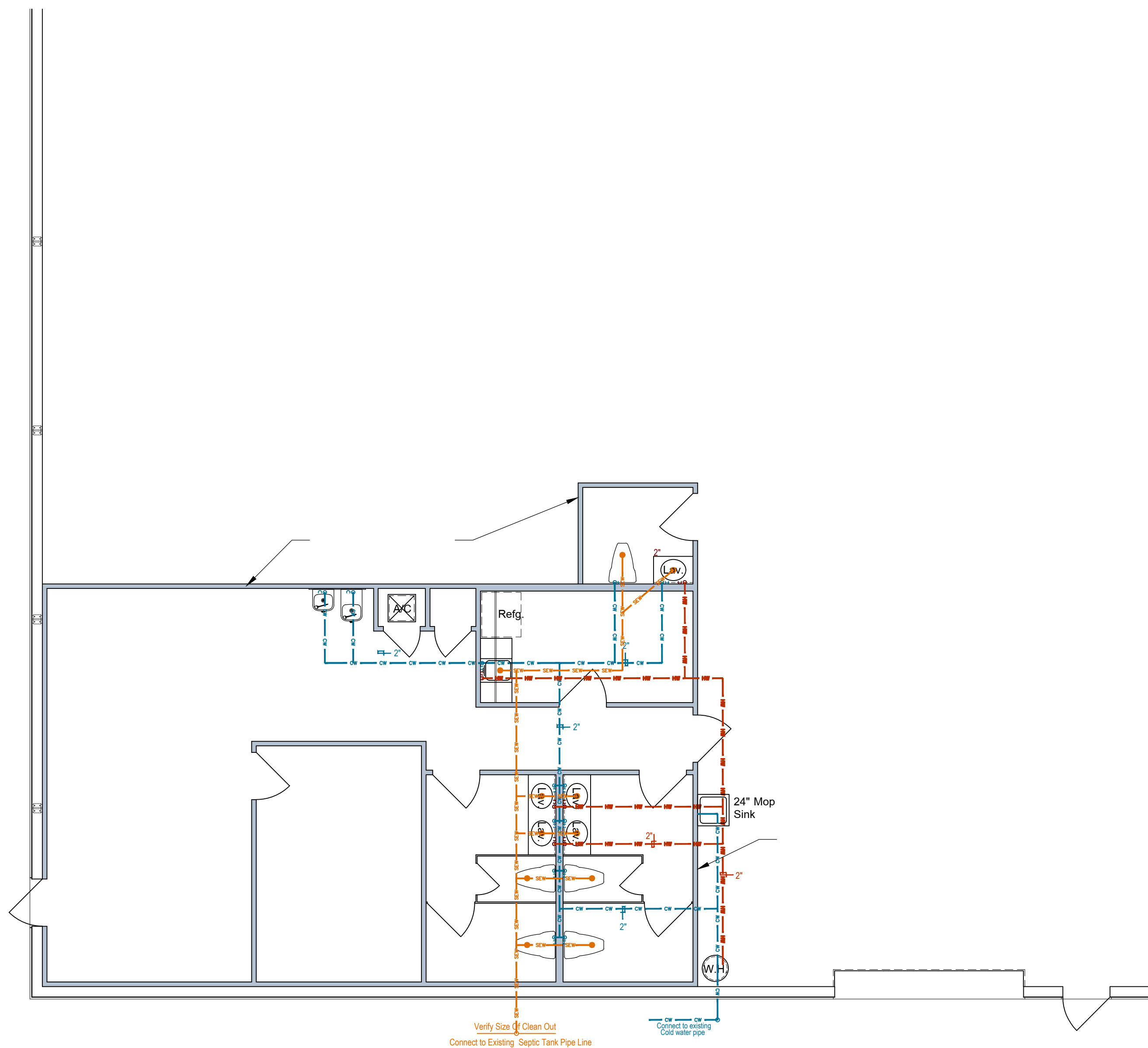
1742 Reveille Road  
REVEILLE INDUSTRIAL ESTATES SUBDIVISION  
HARLINGEN, TEXAS - CAMERON COUNTY

Prepared For: \_\_\_\_\_ Date: 5-21-2024

Project Information: \_\_\_\_\_ Plan Number: C-TA-15000-(7)-2024

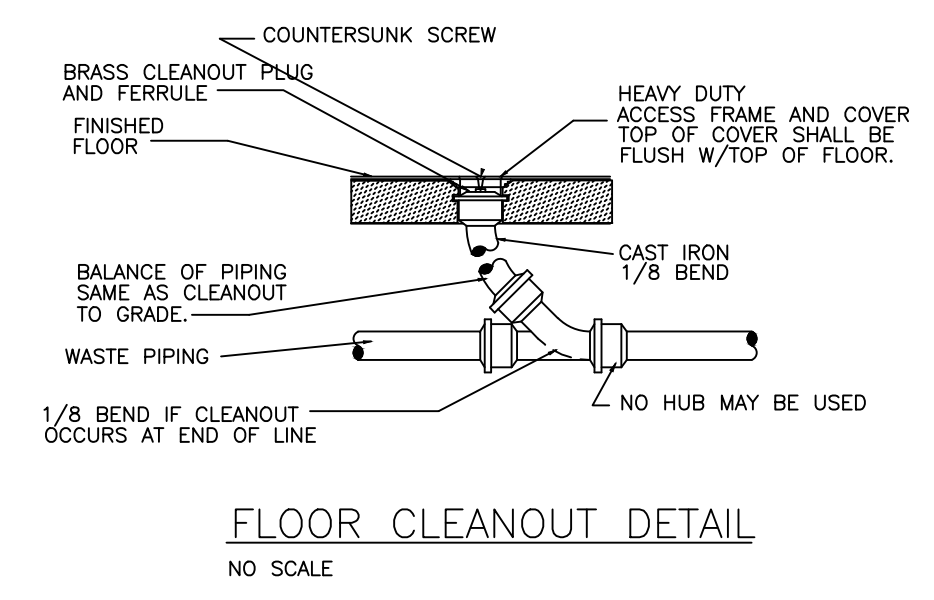
Sheet: 5 Of: 5

**MP-1**



**PLUMBING PLAN** Scale: 3/16"=1'-0"

PLUMBING LEGEND	
Cold Water Line	
Hot Water Line	
Sewer Line	



**PLUMBING NOTES**

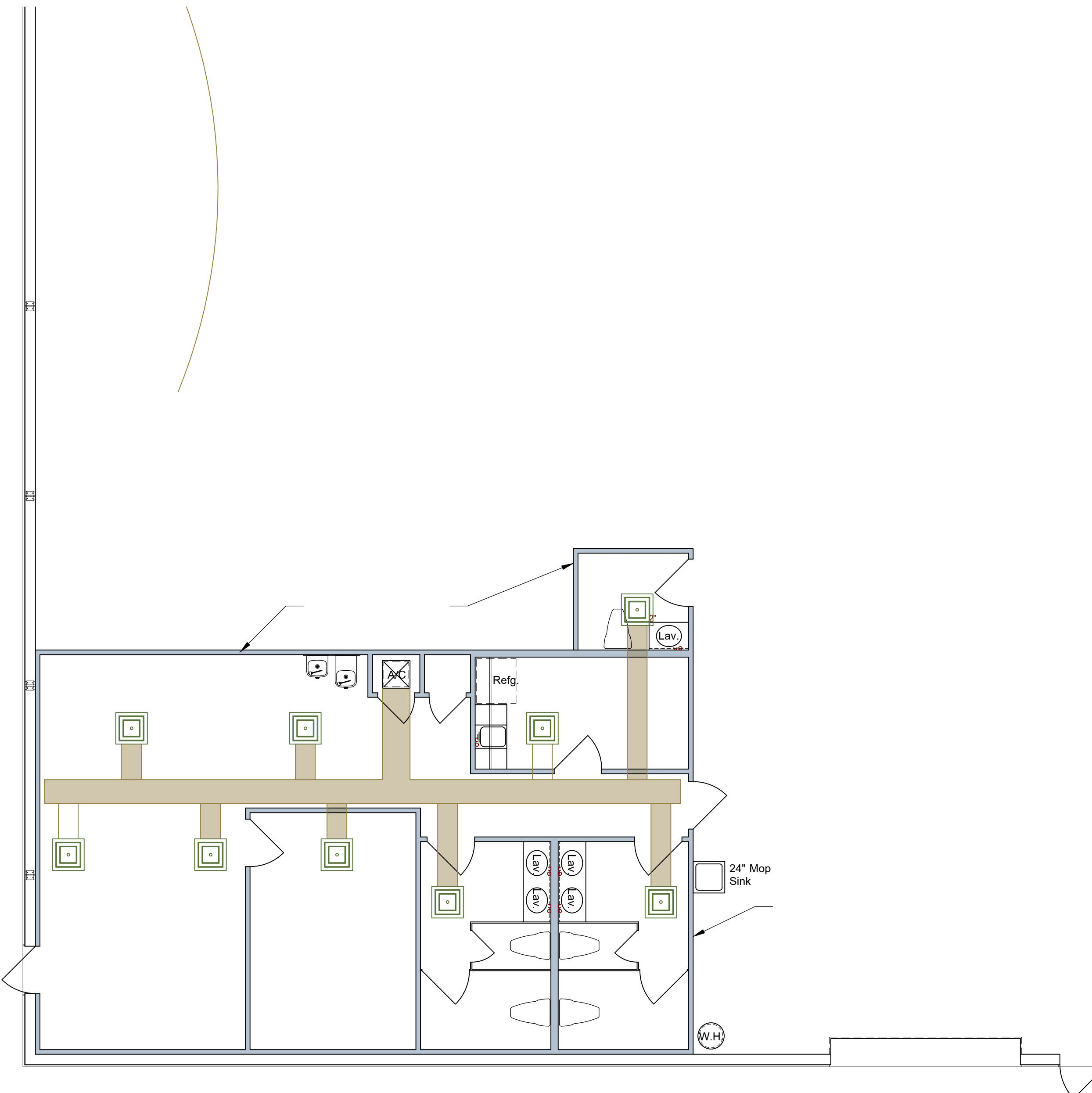
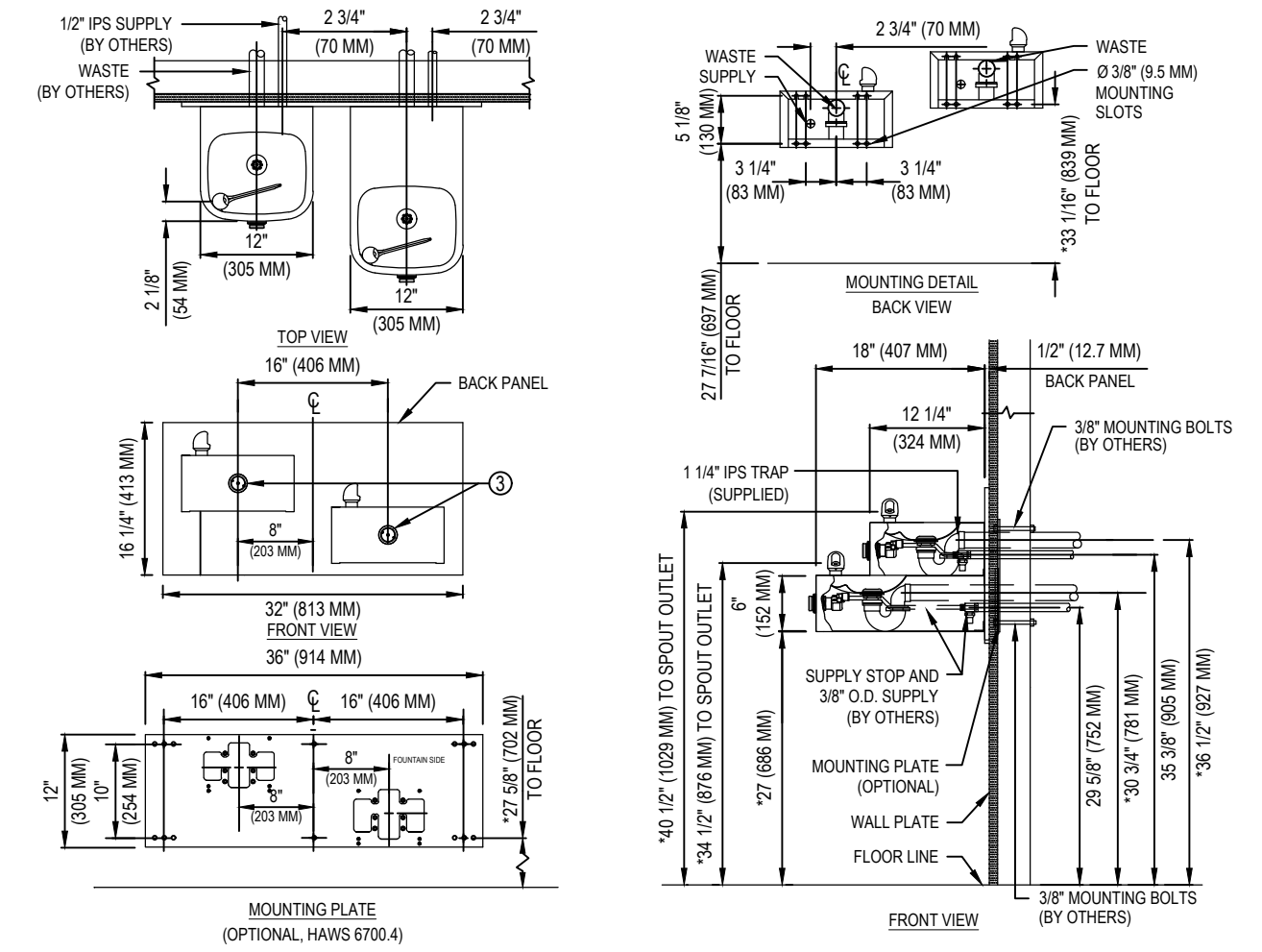
- THIS SPECIFICATION SHEET IS INTENDED AS A GUIDE FOR TRADESMEN. THE FLOOR PLANS ENCLOSED HEREIN ARE SUGGESTIONS FOR THE PLACEMENT OF EQUIPMENT. THEY ARE NOT INTENDED FOR CONSTRUCTION.
- EXACT EQUIPMENT LOCATIONS MUST BE JOB SITE VERIFIED BY OWNER/ CONTRACTOR AND EQUIPMENT SPECIALIST.
- FOLLOW MANUFACTURER'S DRAWINGS FOR EXACT REQUIREMENTS FOR ANY EQUIPMENT SUPPLIED. CONSULT WITH MANUFACTURER REP FOR ADDITIONAL INFORMATION.

**MANUFACTURER NOTES:**

- HOLD ROUGH-IN DIMENSIONS ±1/4" (6.4 MM).
- WHEN INSTALLING THIS UNIT, LOCAL, STATE, OR FEDERAL CODES SHOULD BE ADHERED TO FOR INSTALLATION DIMENSIONS (LOCATIONS), WASTE AND SUPPLY REQUIREMENTS OTHER THAN SHOWN. DIMENSIONS MARKED WITH (\*) MUST BE ADJUSTED ACCORDINGLY.
- REFER TO 5874VRK5874 OPERATION AND MAINTENANCE MANUAL FOR PUSH BUTTON AND VALVE INSTALLATION/MAINTENANCE INSTRUCTIONS.

**NOTES:**

- INSTALLATION TO BE COMPLETED IN ACCORDANCE WITH MANUFACTURER'S SPECIFICATIONS.
- DO NOT SCALE DRAWING.
- THIS DRAWING IS INTENDED FOR USE BY ARCHITECTS, ENGINEERS, CONTRACTORS, CONSULTANTS AND DESIGN PROFESSIONALS FOR PLANNING PURPOSES ONLY. THIS DRAWING MAY NOT BE USED FOR CONSTRUCTION.
- ALL INFORMATION CONTAINED HEREIN WAS CURRENT AT THE TIME OF DEVELOPMENT BUT MUST BE REVIEWED AND APPROVED BY THE PRODUCT MANUFACTURER TO BE CONSIDERED ACCURATE.
- CONTRACTOR'S NOTE: FOR PRODUCT AND COMPANY INFORMATION VISIT [www.CADdetails.com/info](http://www.CADdetails.com/info) AND ENTER REFERENCE NUMBER



**MECHANICAL LAYOUT** Scale: 3/16"=1'-0"

**MECHANICAL NOTES**

- THIS SPECIFICATION SHEET IS INTENDED AS A GUIDE FOR TRADESMEN. THE FLOOR PLANS ENCLOSED HEREIN ARE SUGGESTIONS FOR THE PLACEMENT OF EQUIPMENT. THEY ARE NOT INTENDED FOR CONSTRUCTION.
- EXACT EQUIPMENT LOCATIONS MUST BE JOB SITE VERIFIED BY OWNER/ CONTRACTOR AND EQUIPMENT SPECIALIST IF NEEDED.
- FOLLOW MANUFACTURER'S DRAWINGS FOR EXACT REQUIREMENTS FOR ANY EQUIPMENT SUPPLIED. CONSULT WITH MANUFACTURER REP FOR ADDITIONAL INFORMATION.