

RETAIL & PROFESSIONAL  
SERVICES SPACE

FOR SUB-LEASE

1520 Quarterpath Road  
Williamsburg, VA 23185



HIGH TRAFFIC CORNER

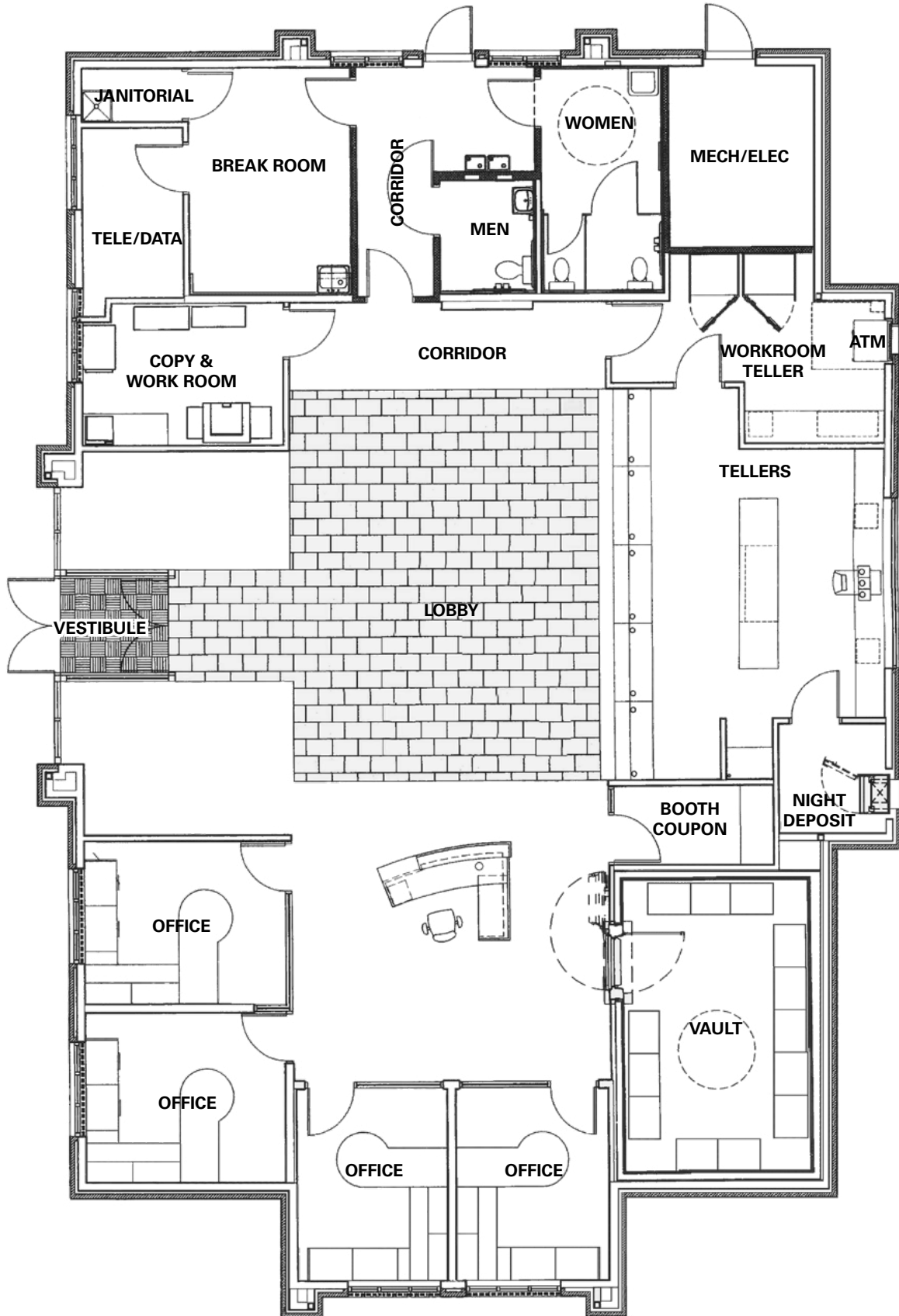
## ABOUT PROPERTY

- Ground lease term through 06/30/2029
- 1.5 acres (68,340 square feet)
- Single-story branch bank with 4,032 square feet
- Five (5) drive-thru lanes
- Built in 2008
- 32 parking spaces
- Located at Harris Teeter anchored Quarterpath Crossing just off Route 199 (Humelsine Parkway)
- Traffic count: 32,000 vpd (ERSI 2021)
- Contact Broker for rate

For more information:  
MATT LEFFLER, CCIM  
757.640.9284  
[MattLeffler@HarveyLindsay.com](mailto:MattLeffler@HarveyLindsay.com)

**HARVEY LINDSAY**  
COMMERCIAL REAL ESTATE

[www.harveylindsay.com](http://www.harveylindsay.com)



For more information:  
MATT LEFFLER, CCIM  
757.640.9284  
MattLeffler@HarveyLindsay.com

701 Town Center Drive • Suite 100  
Newport News, Virginia 23606  
757-873-2020  
www.HarveyLindsay.com

**HARVEY LINDSAY**  
COMMERCIAL REAL ESTATE

1520 Quarterpath Road | Williamsburg, VA 23185

AERIAL



For more information:  
MATT LEFFLER, CCIM  
757.640.9284  
MattLeffler@HarveyLindsay.com

701 Town Center Drive • Suite 100  
Newport News, Virginia 23606  
757-873-2020  
www.HarveyLindsay.com

**HARVEY LINDSAY**  
COMMERCIAL REAL ESTATE

The information contained herein has been obtained from sources believed to be reliable but is not warranted. We cannot be responsible for errors, omissions, withdrawal, or prior lease or sale.



Front Elevations



Drive-thru

For more information:  
MATT LEFFLER, CCIM  
757.640.9284  
[MattLeffler@HarveyLindsay.com](mailto:MattLeffler@HarveyLindsay.com)

701 Town Center Drive • Suite 100  
Newport News, Virginia 23606  
757-873-2020  
[www.HarveyLindsay.com](http://www.HarveyLindsay.com)

**HARVEY LINDSAY**  
COMMERCIAL REAL ESTATE

1520 Quarterpath Road | Williamsburg, VA 23185

# SITE IDENTIFICATION

Quarterpath Crossing

James-York Plaza

The Marquis



For more information:  
 MATT LEFFLER, CCIM  
 757.640.9284  
 MattLeffler@HarveyLindsay.com

701 Town Center Drive • Suite 100  
 Newport News, Virginia 23606  
 757-873-2020  
 www.HarveyLindsay.com

**HARVEY LINDSAY**  
 COMMERCIAL REAL ESTATE

The information contained herein has been obtained from sources believed to be reliable but is not warranted. We cannot be responsible for errors, omissions, withdrawal, or prior lease or sale.

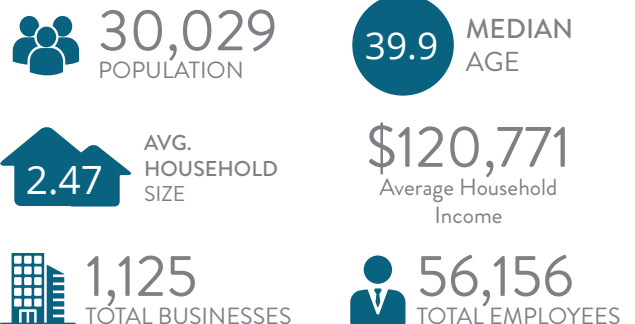
# RETAIL & PROFESSIONAL SERVICES SPACE FOR SUB-LEASE

## DEMOGRAPHICS



2021 Summary	1 Mile	3 Miles	5 Miles
Population	2,680	30,029	54,860
Households	1,123	10,723	20,998
Families	727	6,792	13,248
Average Household Size	2.24	2.47	2.36
Owner Occupied Housing Units	841	7,320	14,843
Renter Occupied Housing Units	281	3,403	6,154
Median Age	57.6	39.9	41.9
Median Household Income	\$109,570	\$87,819	\$84,079
Average Household Income	\$152,216	\$120,771	\$112,263

### KEY FACTS WITHIN 3 MILES



For more information:  
**MATT LEFFLER, CCIM**  
 757.640.9284  
[MattLeffler@HarveyLindsay.com](mailto:MattLeffler@HarveyLindsay.com)

701 Town Center Drive • Suite 100  
 Newport News, Virginia 23606  
 757-873-2020  
[www.HarveyLindsay.com](http://www.HarveyLindsay.com)

**HARVEY LINDSAY**  
 COMMERCIAL REAL ESTATE