



# WARLAND BUSINESS PARK

www.warlandcypress.com

**FOR LEASE: ±4,240 SF  
OFFICE/SALES-SERVICE/TECHNOLOGY**

11215 Knott Avenue, Suite A  
Cypress, California



## PROJECT FEATURES

- 100% Office with Flexible Layout
- 1 Private office plus open bay area, reception, conference room, coffee bar
- 4:1,000 Car Parking
- Extensive Glass Line
- High Image Knott Avenue Frontage
- High Image Corporate Park
- Award-Winning Architecture
- Direct Access to Restaurants/Shopping
- People-Oriented Environment
- Minutes to San Diego (405), Garden Grove (22), and San Gabriel Freeways
- See Reverse for Aerial & Space Plan

### FOR MORE INFORMATION, PLEASE CONTACT:

**BRIAN DEREVERE**  
Lic. 00885755  
brian.derevere@cbre.com  
+1 714 371 9224

**RYAN PETERSON**  
Lic. 01336025  
ryan.peterson@cbre.com  
+1 714 371 9212

© 2023 CBRE, Inc. This information has been obtained from sources believed reliable. We have not verified it and make no guarantee, warranty or representation about it. Any projections, opinions, assumptions or estimates used are for example only and do not represent the current or future performance of the property. You and your advisors should conduct a careful, independent investigation of the property to determine to your satisfaction the suitability of the property for your needs. CBRE and the CBRE logo are service marks of CBRE, Inc. and/or its affiliated or related companies in the United States and other countries. All other marks displayed on this document are the property of their respective owners. N:\Team-Revere\Marketing - InDesign\Warland Business Park\Flyers\11215KnottAve\_SuiteB\_Flyer\_v01\_AK.indd

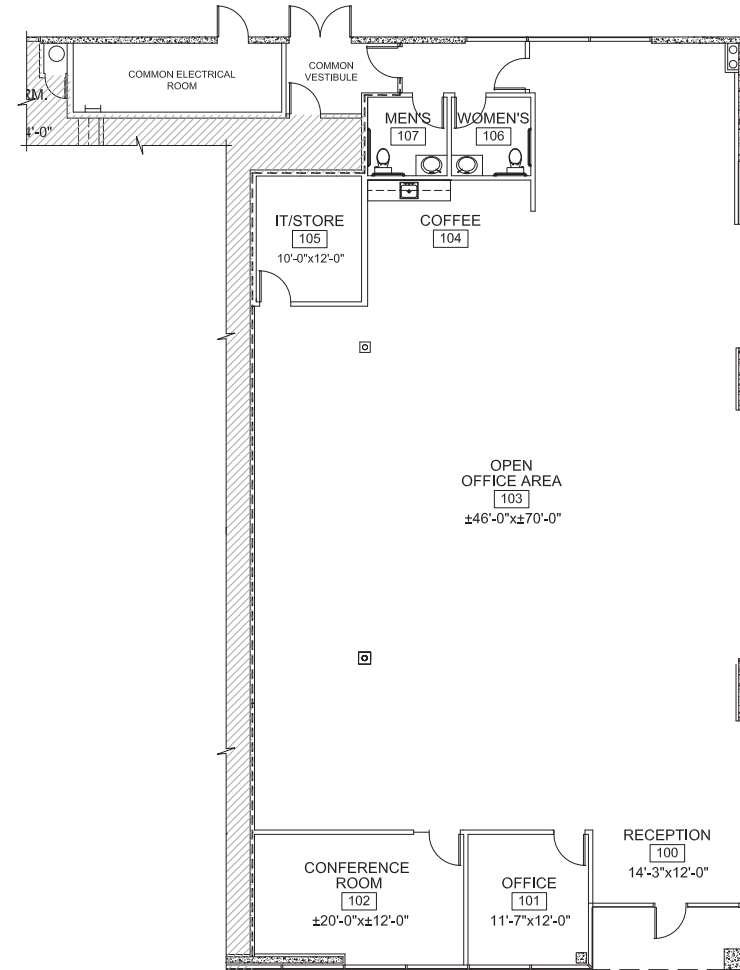


# FOR LEASE: ±4,240 SF OFFICE/SALES-SERVICE/TECHNOLOGY

11215 Knott Avenue, Suite B  
Cypress, California



## FLOOR PLAN



### FOR MORE INFORMATION, PLEASE CONTACT:

**BRIAN DEREVERE**  
Lic. 00885755  
brian.derevere@cbre.com  
+1 714 371 9224

**RYAN PETERSON**  
Lic. 01336025  
ryan.peterson@cbre.com  
+1 714 371 9212