

671 N BERENDO STREET

FOR LEASE – CREATIVE FLEX SPACE IN EAST HOLLYWOOD



JARED SWEDELSON

Vice President

d: 818-742-1632

m: 818-644-7597

jswedelson@naicapital.com

Cal DRE Lic #02105146

NAI CAPITAL - WEST LOS ANGELES

11835 W. Olympic Blvd., Suite 700E

Los Angeles, CA 90064

d: 310-806-6100

f: 310-806-6101

www.naicapital.com

NAI Capital
COMMERCIAL REAL ESTATE SERVICES, WORLDWIDE

Building Details



Lease Rate:

\$2.45/SF NNN

Available SF:

2,237 SF

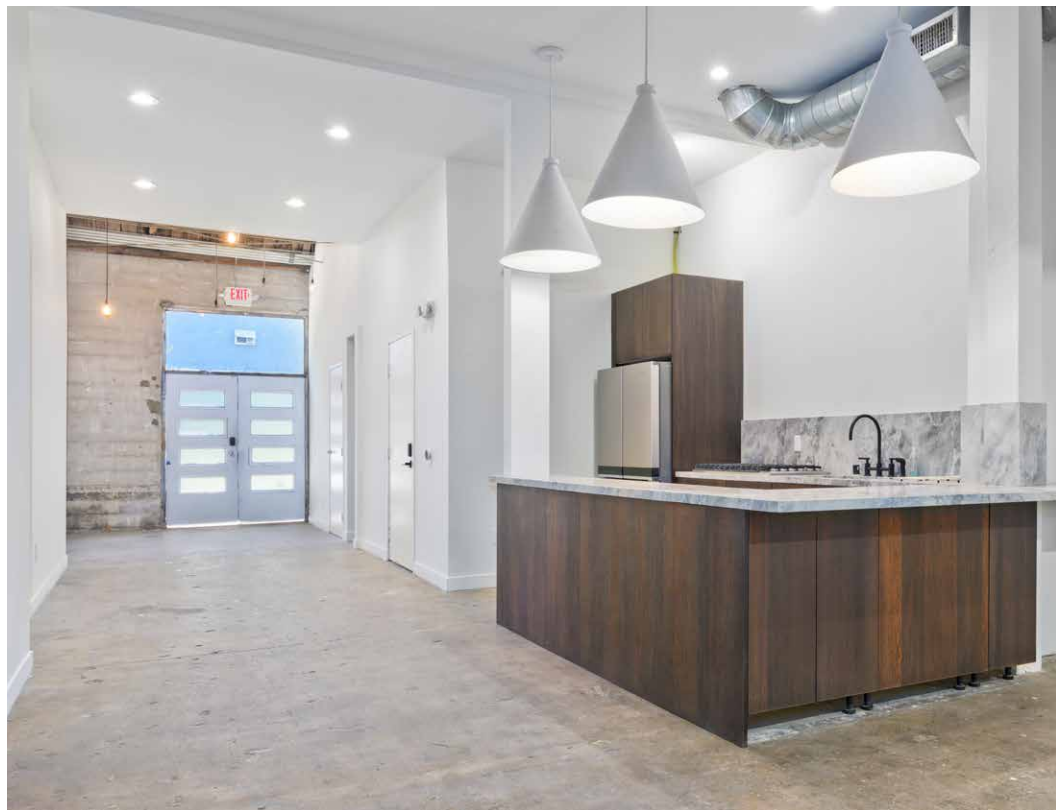
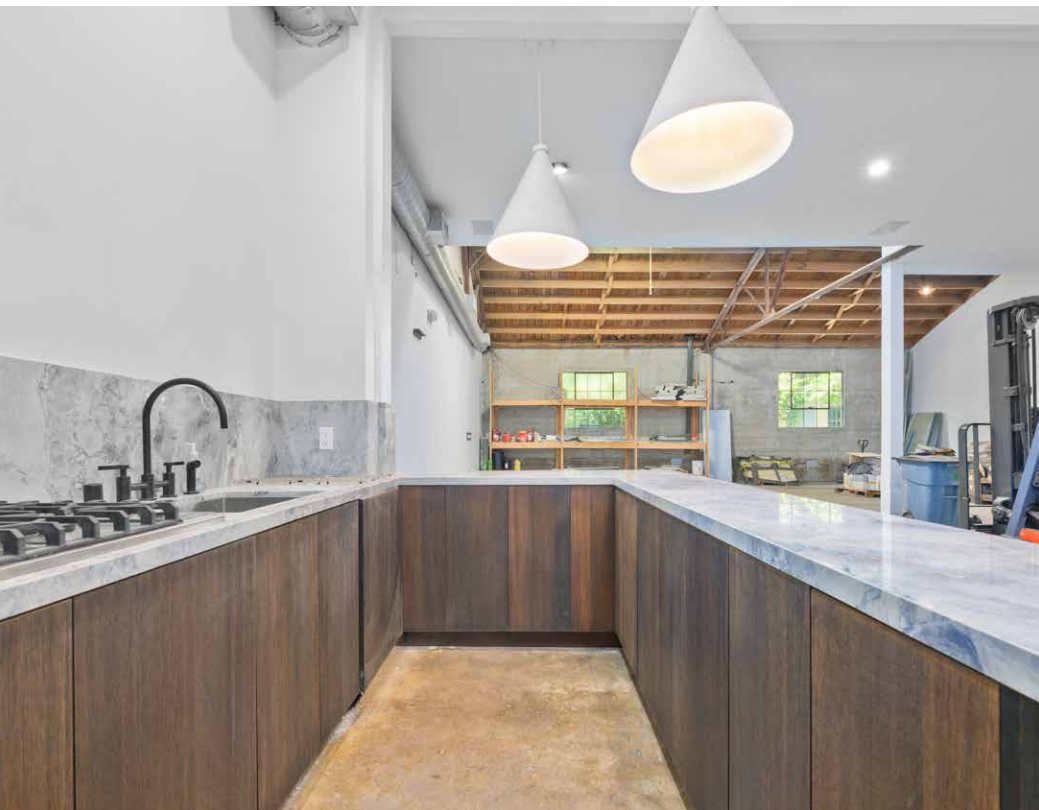
Space Features:

- High ceilings
- Private double door entrance
- 2nd floor mezzanine with skylights
- Newly renovated kitchen
- 2 restrooms

Property Photos



Property Photos



Retail Map



Contact Info

JARED SWEDELSON

Vice President

d: 818-742-1632

m: 818-644-7597

jswedelson@naicapital.com

Cal DRE Lic #02105146

NAI CAPITAL - WEST LOS ANGELES

11835 W. Olympic Blvd., Suite 700E

Los Angeles, CA 90064

d: 310-806-6100

f: 310-806-6101

www.naicapital.com

No warranty, express or implied, is made as to the accuracy of the information contained herein. This information is submitted subject to errors, omissions, change of price, rental or other conditions, withdrawal without notice, and is subject to any special listing conditions imposed by our principals. Cooperating brokers, buyers, tenants and other parties who receive this document should not rely on it, but should use it as a starting point of analysis, and should independently confirm the accuracy of the information contained herein through a due diligence review of the books, records, files and documents that constitute reliable sources of the information described herein. NAI Capital Cal DRE #02130474