



Colliers



For Lease

\$20.00

PSF, Full Service

Contact us:

Pat Mugler

Executive Vice President
+1 757 228 1831
pat.mugler@colliers.com

Ricky Anderson

Executive Vice President
+1 757 217 1892
ricky.anderson@colliers.com

Colliers

150 West Main St, Suite 1100
Norfolk, VA 23510
P: +1 757 490 3300

4560 South

4560 South Boulevard, Virginia Beach

*Under New Ownership
& Major Renovations Complete*

Features

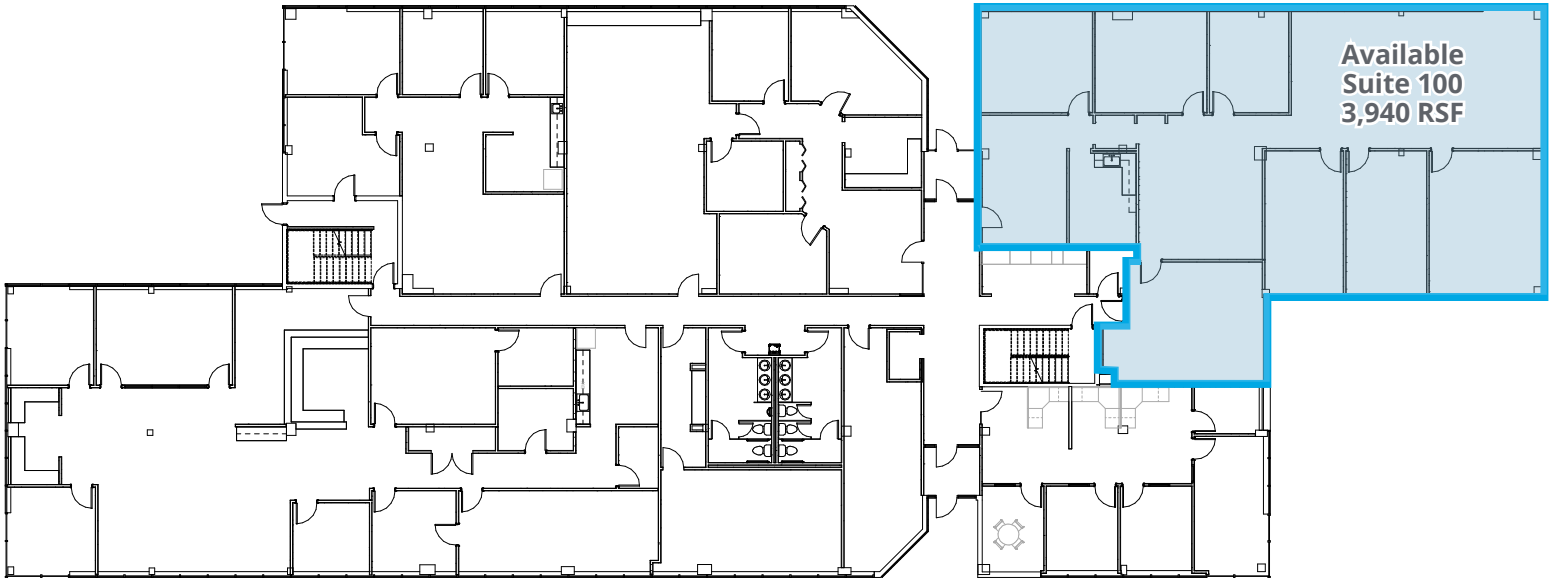
- Three story building totaling 43,411 RSF
- Suites ranging from 2,251 RSF up to 3,940 RSF
- Quality brick and glass construction
- Prominent building signage available on I-264
- .25 miles to I-264 and just minutes to Virginia Beach Town Center
- Building conference room available for tenant use

Accelerating success.

First Floor Plan

Available Suite

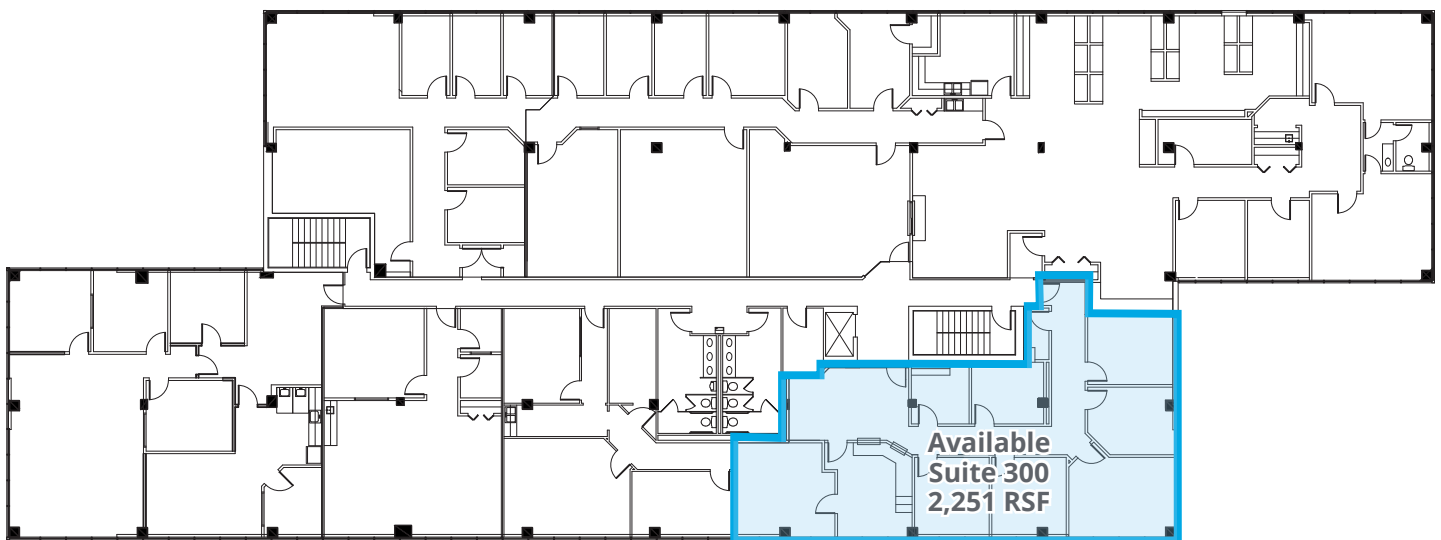
Suite 100: ± 3,940 RSF



Third Floor Plan

Available Suite

Suite 300: ± 2,251 RSF





Virginia Beach Town Center

Site

INTERSTATE
264

South Boulevard



165 Acre
Mt. Trashmore
Recreational Park

Site

INTERSTATE
264

South Boulevard

Contact us:

Pat Mugler
Executive Vice President
+1 757 228 1831
pat.mugler@colliers.com

Ricky Anderson
Executive Vice President
+1 757 217 1892
ricky.anderson@colliers.com

Colliers
150 West Main St | Suite 1100
Norfolk, VA 23510
P: +1 757 490 3300



This document has been prepared by Colliers International for advertising and general information only. Colliers International makes no guarantees, representations or warranties of any kind, expressed or implied, regarding the information including, but not limited to, warranties of content, accuracy and reliability. Any interested party should undertake their own inquiries as to the accuracy of the information. Colliers International excludes unequivocally all inferred or implied terms, conditions and warranties arising out of this document and excludes all liability for loss and damages arising there from. This publication is the copyrighted property of Colliers International and/or its licensor(s). ©2024. All rights reserved.