



FOR SUBLEASE

Northwest Corporate Park Building 1

3583A NW Yeon Ave / Portland, OR 97210



CONVENIENT INDUSTRIAL OFFICE / WAREHOUSE SUBLEASE

Property Highlights

- Rentable Area: 22,438 SF with 3,464 SF Two-Story Offices (2,178 SF / 1,286 SF)
- Ceiling Clearance: 24'
- Dock-High Door: One (1) with LL
- Grade-Level Door: One (1)
- Sublease Term: June 20, 2024
Longer direct term available
- Monthly Rental: \$16,460 NNN
(\$0.734 / SF Blended)

John Hallman

Associate - Industrial
Direct: +1 503 279 1726
john.hallman@cushwake.com
LIC #201235126

200 SW Market St, Suite 200
Portland, Oregon 97201
Main +1 503 279 1700

©2023 Cushman & Wakefield. All rights reserved. The information contained in this communication is strictly confidential. This information has been obtained from sources believed to be reliable but has not been verified. No warranty or representation, express or implied, is made as to the condition of the property (or properties) referenced herein or as to the accuracy or completeness of the information contained herein, and same is submitted subject to errors, omissions, change of price, rental or other conditions, withdrawal without notice, and to any special listing conditions imposed by the property owner(s). Any projections, opinions or estimates are subject to uncertainty and do not signify current or future property performance.

cushmanwakefield.com



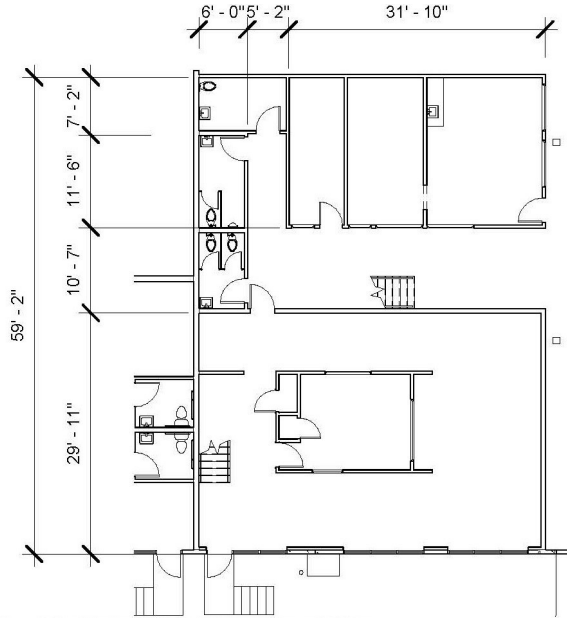
**CUSHMAN &
WAKEFIELD**

FOR SUBLEASE

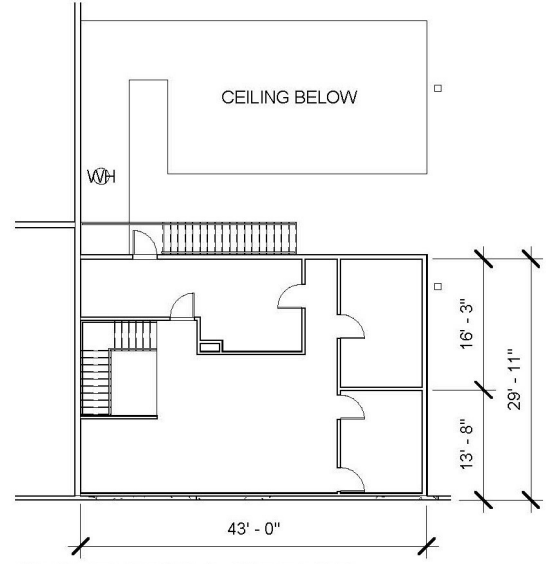
Northwest Corporate Park Building 1

3583A NW Yeon Ave / Portland, OR 97210

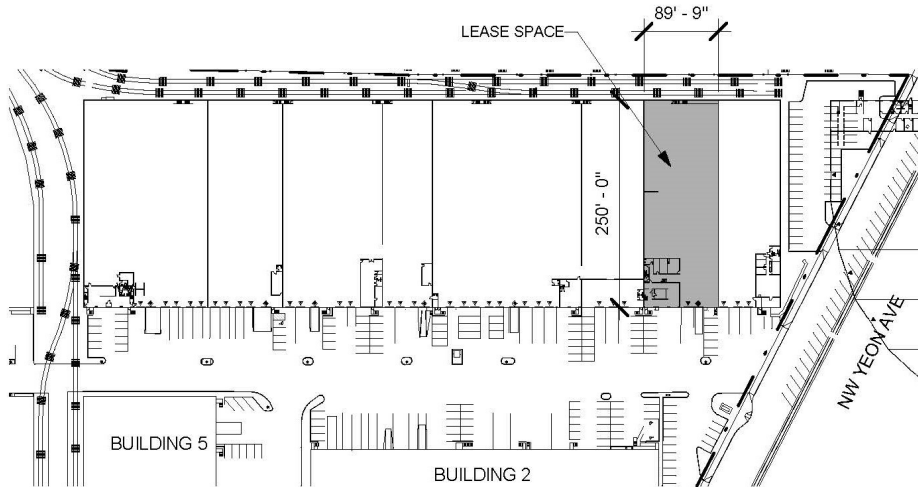
Floor Plan & Site Map



SUITE 3583A OFFICE
GROUND FLOOR NTS



SUITE 3583A OFFICE
SECOND FLOOR NTS



LEGEND

- ▼ DOCK HIGH OVERHEAD DOOR
- ◆ DRIVE IN OVERHEAD DOOR

TENANT DATA

RENTABLE AREA:	22,438 SF
OFFICE AREA A:	2,178 SF
OFFICE AREA B ABOVE:	1,286 SF



OVERALL BUILDING
NTS

Aerial / Location Map



John Hallman

Associate - Industrial

+1 503 279 1726

john.hallman@cushwake.com

LIC #201235126