

FOR SUBLEASE - **±2,549 SF**

CENTERPOINTE

19782 MACARTHUR BOULEVARD

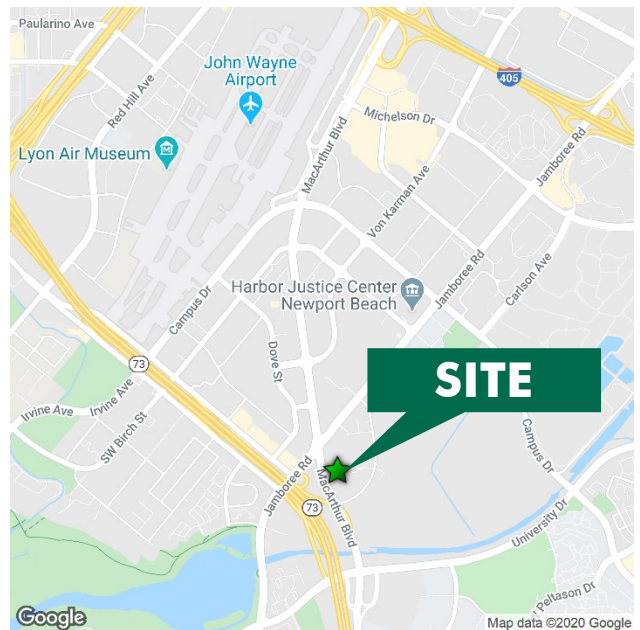
SUITE 285

Irvine, CA 92612



SUITE FEATURES

- + ±2,549 SF of Office Space
- + Available August 1, 2020
- + Sublease Term through March 31, 2022
- + Functional Office Space
- + Small Lab Area
- + Breakroom and Conference Room
- + Great Window Line
- + Excellent Access to the San Diego (405) Freeway and State Route 73 (SR 73)



CONTACT INFORMATION

ROSS BOURNE

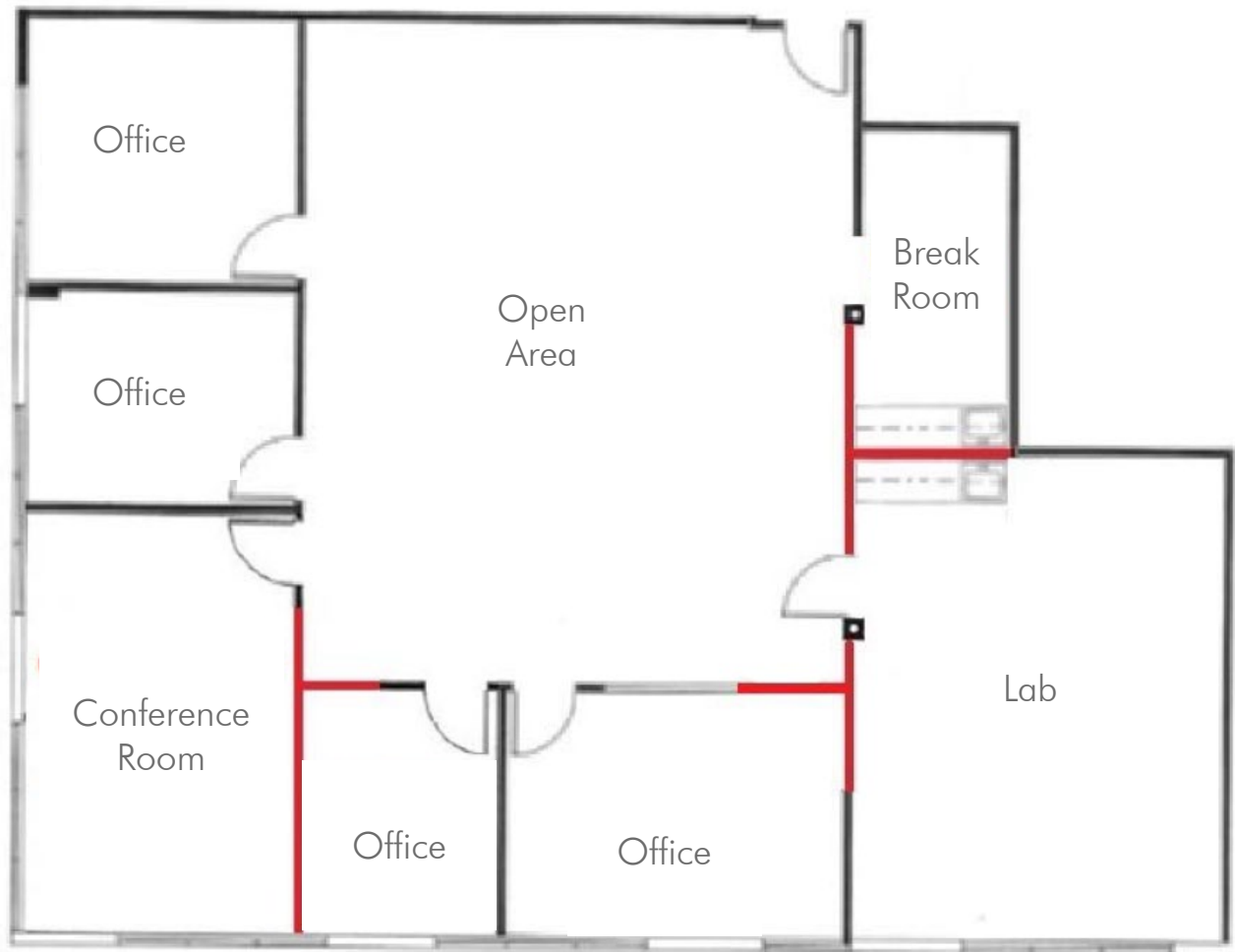
Lic. 01436669
+ 1 949 725 8537
ross.bourne@cbre.com

www.cbre.com/newportbeach

CBRE

FOR SUBLEASE CENTERPOINTE

19782
MACARTHUR BOULEVARD, SUITE 285
Irvine, CA 92612



© 2020 CBRE, Inc. The information contained in this document has been obtained from sources believed reliable. While CBRE, Inc. does not doubt its accuracy, CBRE, Inc. has not verified it and makes no guarantee, warranty or representation about it. It is your responsibility to independently confirm its accuracy and completeness. Any projections, opinions, assumptions or estimates used are for example only and do not represent the current or future performance of the property. The value of this transaction to you depends on tax and other factors which should be evaluated by your tax, financial and legal advisors. You and your advisors should conduct a careful, independent investigation of the property to determine to your satisfaction the suitability of the property for your needs.

Photos herein are the property of their respective owners and use of these images without the express written consent of the owner is prohibited.

www.cbre.com/newportbeach

CBRE