

SPEAKEASY-LIKE CAFE IN PACK SQUARE FOR LEASE



22
S PACK SQUARE, LL100
ASHEVILLE, NC

RESTAURANT SPACE

974 SF
\$22 SF (NNN)

JASON BURK | CCIM
COMMERCIAL BROKER
C: 828.674.2120
JBURK@WHITNEYCRE.COM

All information herein obtained from sources deemed reliable but not guaranteed, and may change or be updated without notice.

Pack Square Historic Restaurant Space

THIS SPACE HOUSED A FORMER CAFE, FAMOUSLY KNOWN AS THE UNDERGROUND CAFE.

MANY STORIES WERE SHARED AND DEALS WERE MADE IN THIS HISTORIC SPACE OVER THE YEARS.

GREAT FOR A COFFEE, TEA, DESSERT, PASTRY OR ANY OTHER CAFE CONCEPT. SPEAKEASY TYPE LOCATION,

FLAG SIGNAGE AVAILABLE ON THE WIDE, WALKABLE BRICK STREET THAT FRONTS THE SPACE.

FEATURES

- ELEVATOR TO SPACE
- COMMON AREA RESTROOM
- SMALL SPACE, EASY TO OPERATE
- STREET SIGNAGE AVAILABLE

LOCATION DESCRIPTION

In the heart of downtown Asheville, in famous Pack Square. The Asheville Art Museum, Wicked Weed Brewery, The Arras Hotel, Pack Square Park and Mast General Store highlight the surrounding block. Immense foot traffic area where buskers, artists, and entertainment of all kinds coalesce in this vibrant atmosphere. It's neighbors are Asheville's most famous restaurants; Curate, Posana, Salsa's, Bomba, Chestnut, and French Broad Chocolate Lounge.

GALLERY

JASON BURK, CCIM
C: 828.674.2120

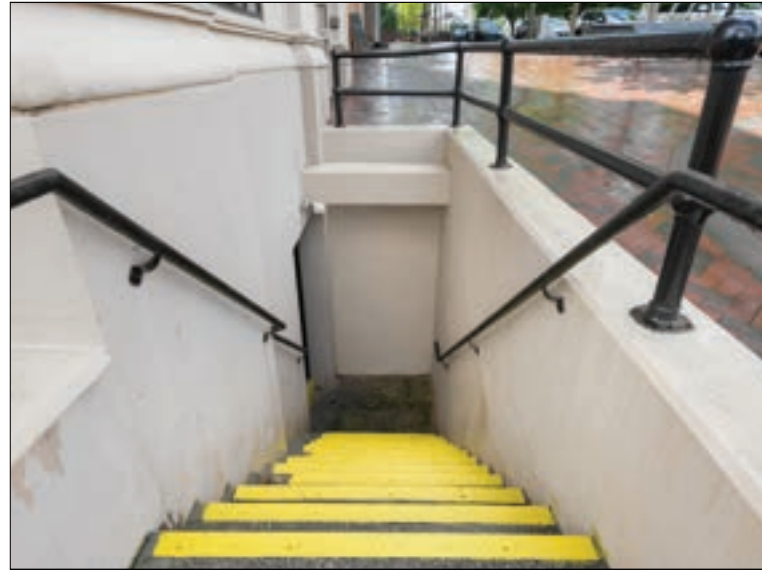
STAIRS AT ENTRANCE TO BASEMENT



ELEVATOR ACCESS TO SPACE



STAIRS WITH FLAG SIGNAGE AVAILABLE



STAIRS TO ENTRANCE

22 S PACK SQUARE LL 100 - FOR LEASE | WHITNEY COMMERCIAL REAL ESTATE

All information herein obtained from sources deemed reliable but not guaranteed, and may change or be updated without notice.

GALLERY

JASON BURK, CCIM
C: 828.674.2120

DINING ROOM FROM KITCHEN



OPEN KITCHEN



DINING ROOM WITH ENTRANCE SHOWN



DINING ROOM WITH WINDOWS

22 S PACK SQUARE LL 100 - FOR LEASE | WHITNEY COMMERCIAL REAL ESTATE

All information herein obtained from sources deemed reliable but not guaranteed, and may change or be updated without notice.

AREA BUSINESSES

JASON BURK, CCIM
C: 828.674.2120



22 S PACK SQUARE LL 100 - FOR LEASE | WHITNEY COMMERCIAL REAL ESTATE

All information herein obtained from sources deemed reliable but not guaranteed, and may change or be updated without notice.

AREA LANDMARKS & FLOORPLAN

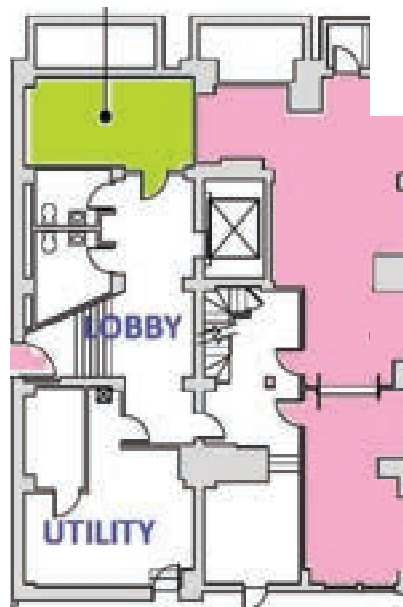
JASON BURK, CCIM
C: 828.674.2120



DOWNTOWN WITH AREA LANDMARKS EAST



DOWNTOWN WITH AREA LANDMARKS NORTH



22 S PACK SQUARE LL 100 - FOR LEASE | WHITNEY COMMERCIAL REAL ESTATE

All information herein obtained from sources deemed reliable but not guaranteed, and may change or be updated without notice.

DEMOGRAPHICS MAP & REPORT

JASON BURK, CCIM
C: 828.674.2120



POPULATION	3 MILES	5 MILES	10 MILES
Total Population	55,851	101,274	220,557
Average Age	42	42	43
Average Age (Male)	41	41	42
Average Age (Female)	43	43	44
HOUSEHOLDS & INCOME	3 MILES	5 MILES	10 MILES
Total Households	25,735	45,741	97,067
# of Persons per HH	2.2	2.2	2.3
Average HH Income	\$101,933	\$102,227	\$102,431
Average House Value	\$531,816	\$499,400	\$482,265

Demographics data derived from AlphaMap

TRANSACTION BROKER

jason burk

Commercial Real Estate Broker
828.674.2120
jburk@whitneycre.com



Jason Burk, CCIM is a seasoned commercial real estate professional with over two decades of experience. Since entering the industry in 1999, he's gained a diverse skill set spanning both development and brokerage. Specializing in retail, Jason excels in tenant and landlord representation, site location, shopping center investment sales, restaurant and medical leasing, and land transactions. He also offers expertise in industrial and office transactions when needed.

Jason's real estate journey began at Landex, Inc. in Charlotte, NC, where he worked on a project anchored by Concord Mills Mall. He later joined Alliance Development Group, focusing on single-tenant restaurant projects. In 2009, his work in Asheville shifted to the sale, leasing, and disposition of distressed assets with Whitney Commercial Real Estate. By 2014, Jason became part of the executive team at Biltmore Farms, serving as Director of Leasing, overseeing more than 1.6 million square feet of retail and office space. His role also included strategic planning for 3,000 acres of company holdings, including the renowned Biltmore Park Town Square—an award-winning mixed-use development.

Jason returned to Whitney Commercial Real Estate in 2019 to build the only dedicated retail team in Western North Carolina with Eric Engstrom. In 2024, Jason proudly celebrated 12 years with Whitney.

Originally from South Carolina, Jason, along with his wife, Hope, and children, Laila and Jack Wesley, relocated to Black Mountain in 2009. Outside of work, he enjoys spending quality time with his family—whether backpacking, fishing, or boating. Jason holds a degree in Real Estate and Urban Analysis from Appalachian State University and is a proud recipient of the prestigious CCIM.

TRANSACTION HIGHLIGHTS:

AFC URGENT CARE	OREILLY'S
ALAN'S PAWN	PAPA'S & BEER
ALG SENIOR LIVING	PNC BANK
APRICOT LANE	POPEYE'S
BACKYARD BURGER	PROGRESSIVE INSURANCE
BEVERLY HANKS MTGE	RANGE URGENT CARE
BILTMORE PROPERTY GRP	REGAL THEATER
CLEAN JUICE	REICH, LLC
CLUB PILATES	REALTY INCOME-REIT
EARTHFARE	RBC CAPITAL MARKETS
FJALLRAVEN	SASSAFRAS
FRESH MARKET	SAW SOFTMILL
GREAT CLIPS	STANTON OPTICAL
HYDRATE MEDICAL	STARBUCK'S
ICI CHARTER SCHOOL	SUBWAY
KMART	TD BANK
LENSCRAFTERS	UNC SCHOOL OF MEDICINE
LUELLA'S BBQ	UPM RAFLATEC
MADISON CAPITAL GROUP	WICKER CAPITAL
MATTRESS WAREHOUSE	WNC OUTDOOR COLLECTIVE
MISSION HOSPITAL	WALGREENS
MOORE FOOT & ANKLE	UPM RAFLATEC
NORVELL PROPERTIES	