

2251 VANTAGE ST



LONE PINE
PROPERTY COMPANY

A DISTINCTIVE ADDRESS IN THE DESIGN DISTRICT

2251 Vantage Street is ideally located in the heart of Dallas' vibrant Design District, a sought-after hub for creative and commercial businesses. The property offers flexible office, showroom suites ideal for design firms, studios, and professional offices. Its prime location provides convenient access to Downtown Dallas, major highways, and the district's renowned showrooms, galleries, and dining.



12,000 SF

RBA

2:1000

Parking

1

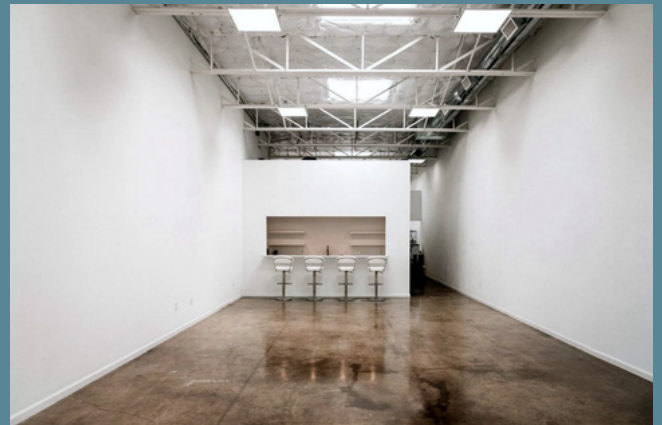
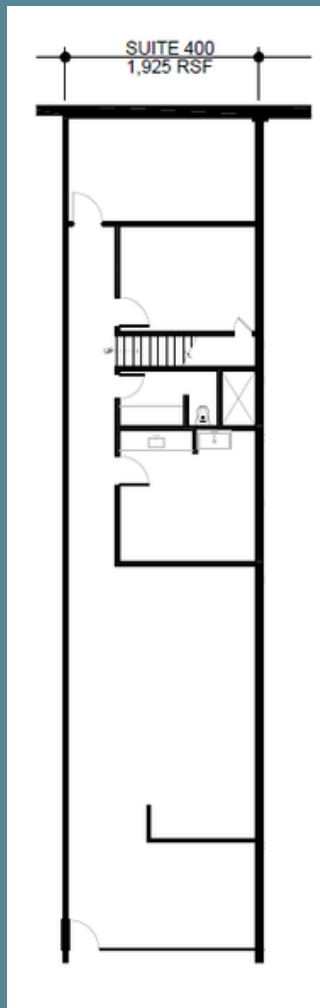
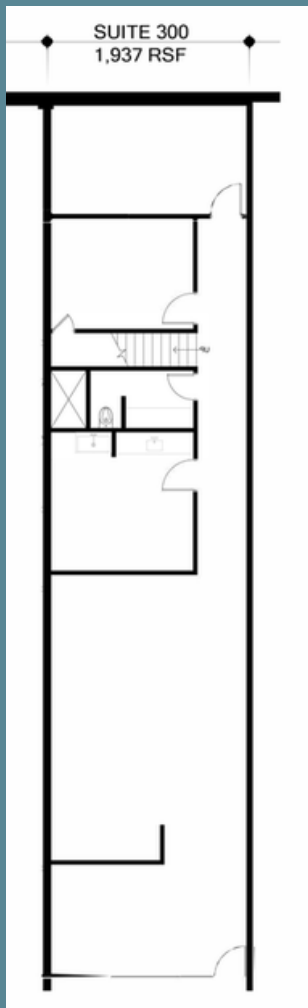
Common Dock Door

5

Skylights Per Space

1,937-1,925 SF

Available



2251 VANTAGE ST

214.914.1014
info@lonepinepc.com



LONE PINE
PROPERTY COMPANY