



Office / Warehouse Space for Lease

LARIAT BUSINESS CENTER I
7900-7940 12TH AVE S
BLOOMINGTON, MN 55425

Available Space:

Suite 7910

1,101 SF- Office
2,724 SF-Warehouse
3,825 SF - Total
One (1) Dock Door

Suite 7920

949 SF- Office
2,895 SF-Warehouse
3,844 SF - Total
One (1) Dock Door

Suite 1145

840 SF- Office
480 SF-Warehouse
1,320 SF - Total
One (1) Dock Door

Suite 1151

2,169 SF- Office
670 SF- Mezzanine
2,839 SF - Total
One (1) Dock Door

Suites 1145 & 1151

3,009 SF- Office
670 SF- Mezzanine
480 SF-Warehouse
4,159 SF - Total
Two (2) Dock Doors

Lease Rates:

Negotiable

2026 Est. CAM/Tax:

\$6.01 PSF

Property Highlights:

- Great access to Interstate 494, 35W, and Hwy 77
- In close proximity to Mall of America and MSP Airport
- 18' Clear Height
- New parking lot
- Local owner and Property Manager

For information, please contact:

Brian Netz

Executive Managing Director
t 612-430-9947
brian.netz@nmrk.com

Lucas Long

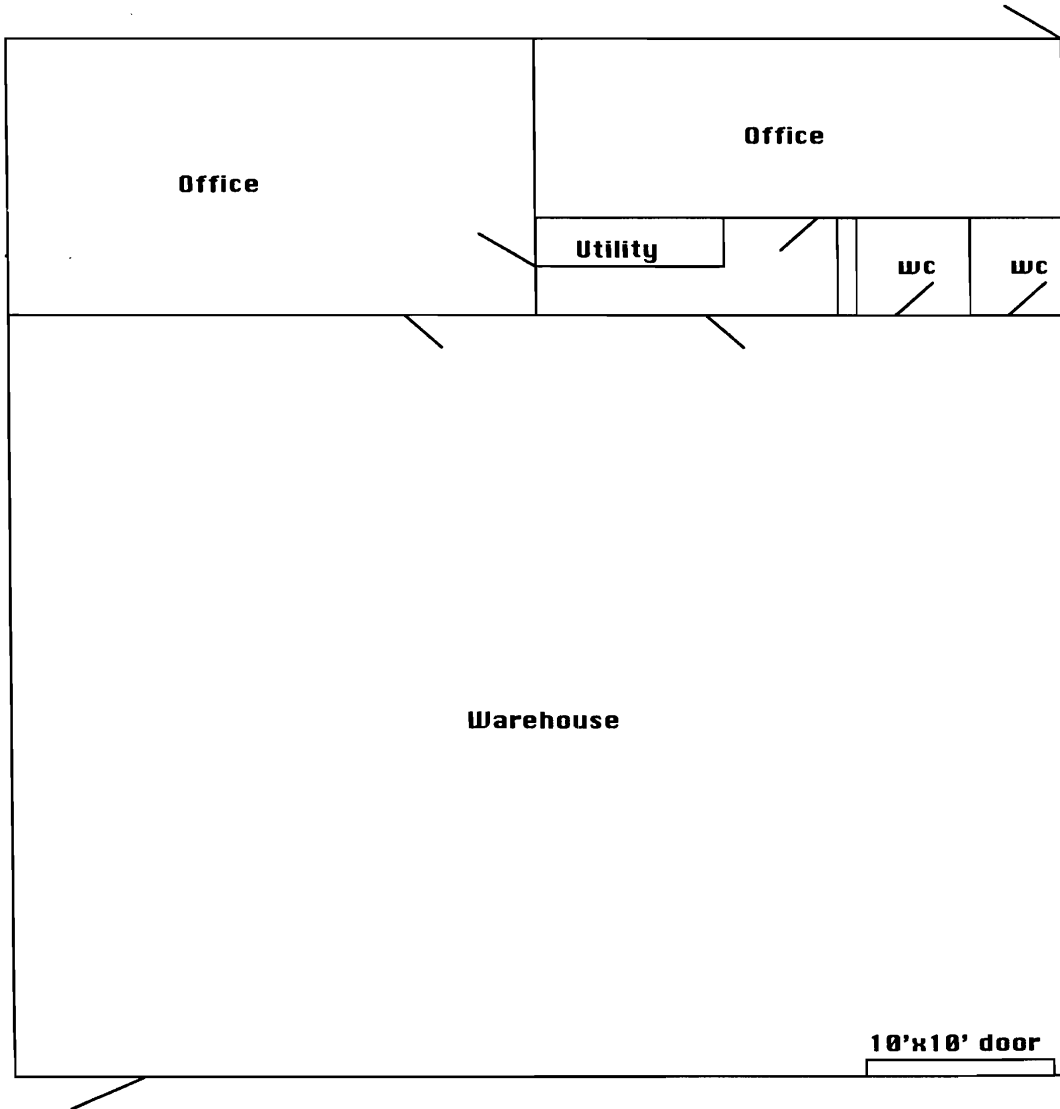
Director
t 612-430-9952
lucas.long@nmrk.com

100 South Fifth St, Suite 2100
Minneapolis, MN 55402

nmrk.com

NEWMARK

SUITE 7910



For information, please contact:

Brian Netz
Executive Managing Director
t 612-430-9947
brian.netz@nmrk.com

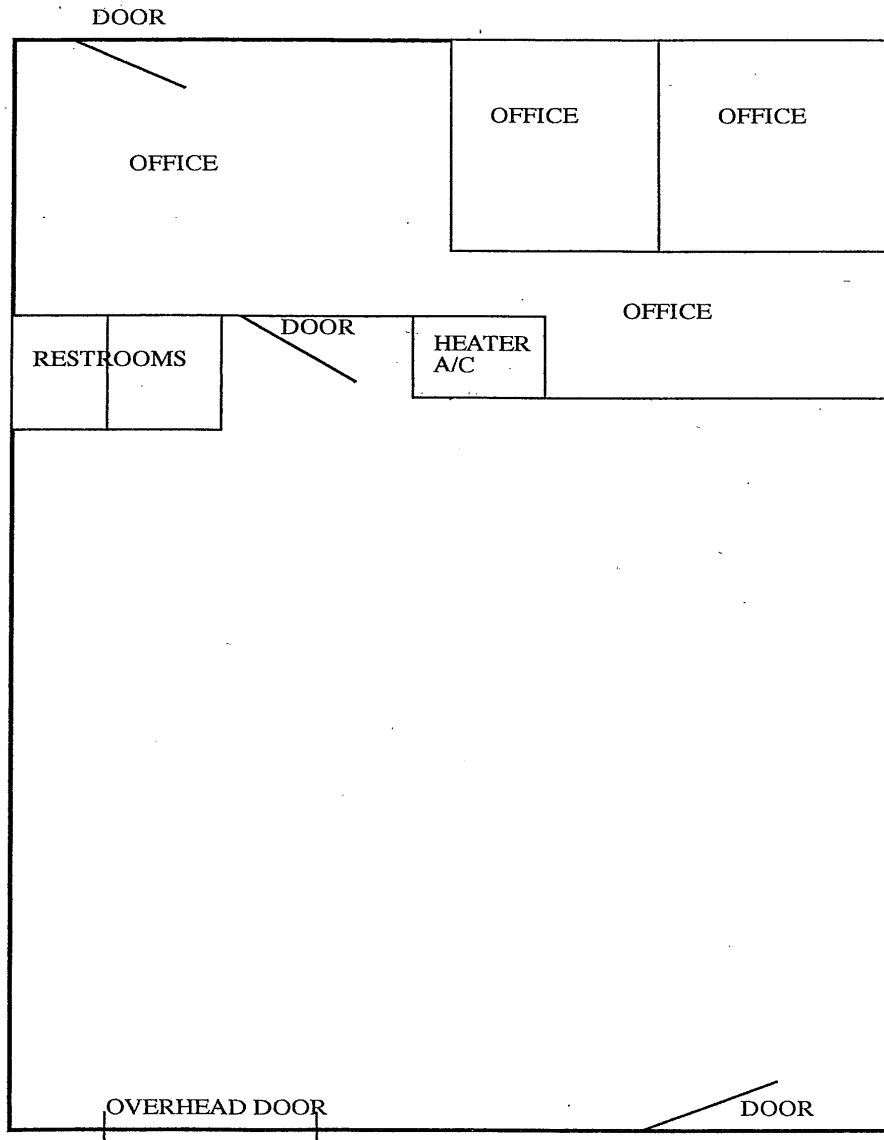
Lucas Long
Director
t 612-430-9952
lucas.long@nmrk.com

100 South Fifth St, Suite 2100
Minneapolis, MN 55402

nmrk.com

NEWMARK

SUITE 7920



For information, please contact:

Brian Netz
Executive Managing Director
t 612-430-9947
brian.netz@nmrk.com

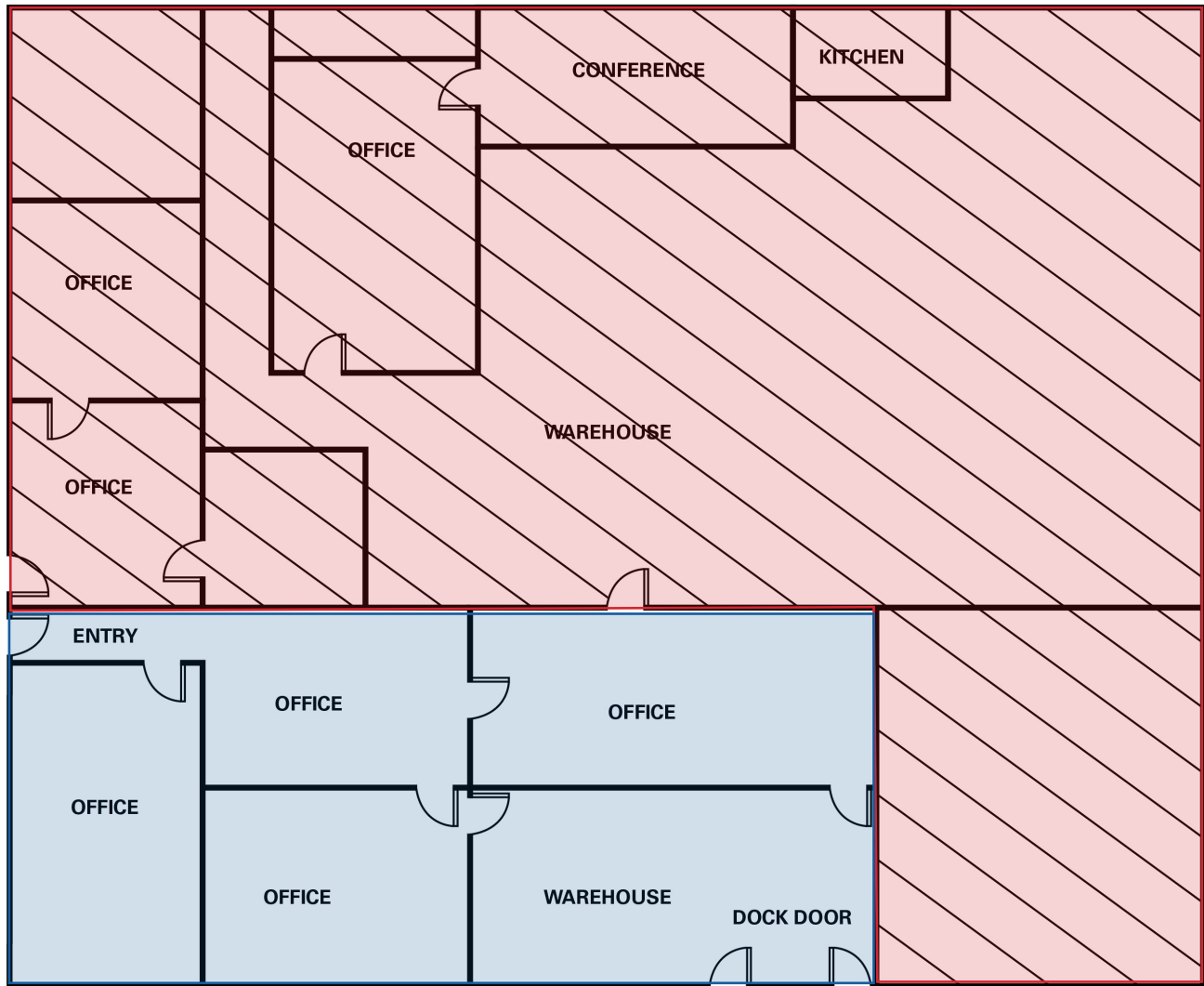
Lucas Long
Director
t 612-430-9952
lucas.long@nmrk.com

100 South Fifth St, Suite 2100
Minneapolis, MN 55402

nmrk.com

NEWMARK

SUITE 1151



SUITE 1145

For information, please contact:

Brian Netz
Executive Managing Director
t 612-430-9947
brian.netz@nmrk.com

Lucas Long
Director
t 612-430-9952
lucas.long@nmrk.com

100 South Fifth St, Suite 2100
Minneapolis, MN 55402

nmrk.com

NEWMARK