



FOR SALE & LEASE
±142,405 SF

NYSE Company Headquarters

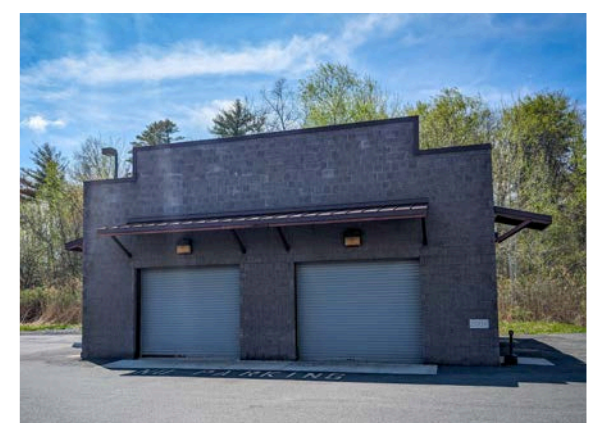
968 Albany Shaker Road, Latham, NY 12110

PROPERTY DESCRIPTION

Offered for sublease is ±142,405 SF current Plug Power office/manufacturing headquarters. The campus consists of four separate buildings.

- Building 1: ±33,405 SF two-story Class A steel frame office building
- Building 2: ±49,500 SF one-story steel frame lab/ manufacturing/warehouse building
- Building 3: ±58,500 SF lab/manufacturing/ warehouse building
- Building 4 – ±1,000 SF Two Bay Garage

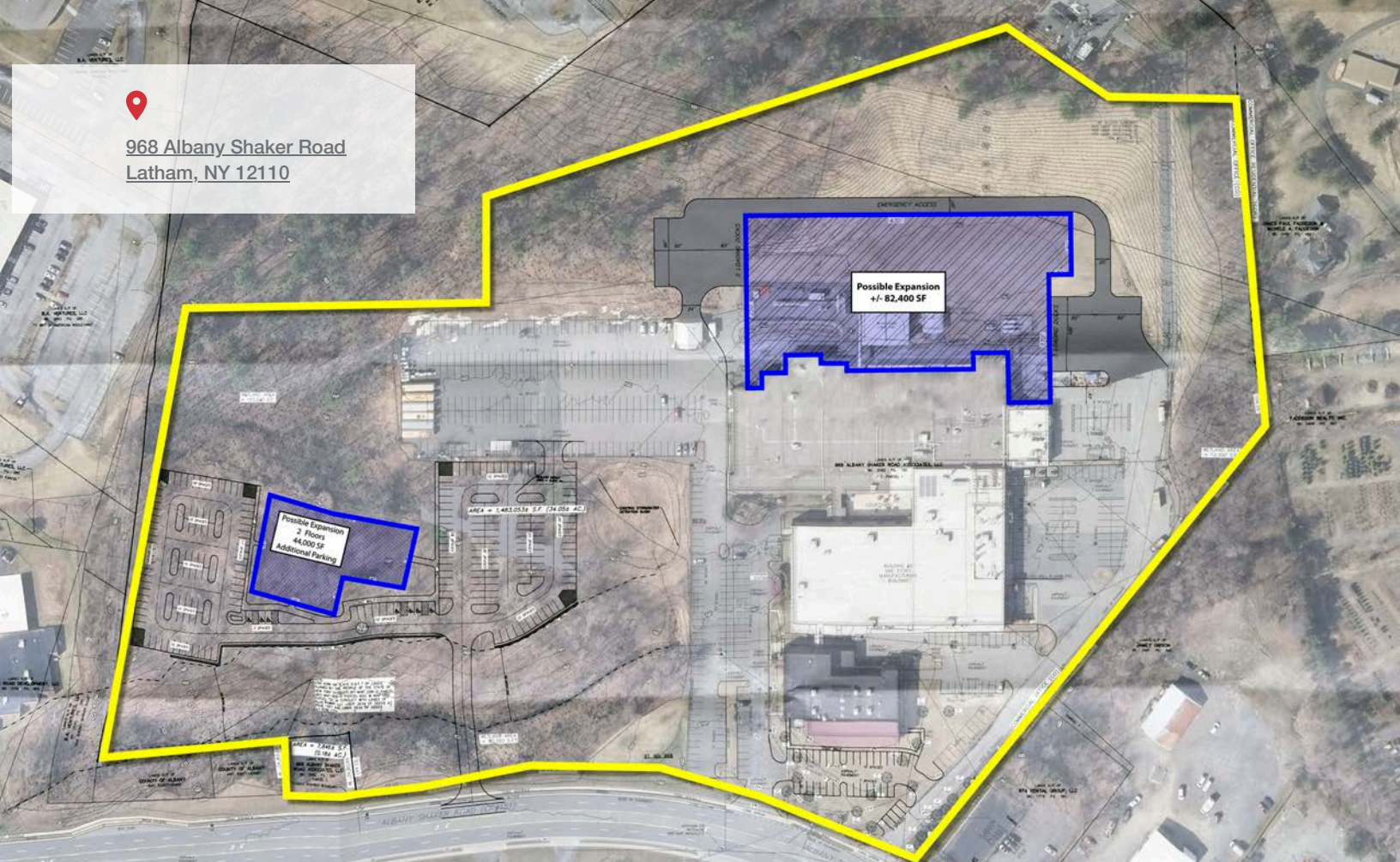
Property provides extra developable land



Visit the website to get more information.
www.968albanyshaker.com



968 Albany Shaker Road
Latham, NY 12110



PROPERTY HIGHLIGHTS

- Municipal water and sewer; Natural gas and electric supplied by National Grid
- Full sprinkler system and card key access throughout
- Up to 24' ceilings in lab/manufacturing/ warehouse space
- Class A office space
- Total of (6) overhead doors of various sizes and (4) 8'x10' loading docks w/ levelers
- ADA compliant



 **Daniel O'Brien** | President/Broker

o: 518 465 1400 Ext. 224
e: dobrien@naiplatform.com


 **Joseph Sausto** | Associate Broker

o: 518 465 1400 Ext. 216
e: jsausto@naiplatform.com

 **Anthony "Tony" Catalano** | Salesperson

o: 518 465 1400 Ext. 206
e: tcatalano@naiplatform.com

Two of the listing agents, Daniel C. O'Brien and Joe Sausto, are also the owners of the property. We obtained the information above from sources we believe to be reliable. However, we have not verified its accuracy and make no guarantee, warranty or representation about it. It is submitted subject to the possibility of errors, omissions, change of price, rental or other conditions, prior sale, lease or financing, or withdrawal without notice. We include projections, opinions, assumptions or estimates for example only, and they may not represent current or future performance of the property. You and your tax and legal advisors should conduct your own investigation of the property and transaction.

 14 Corporate Woods Blvd.,
Albany, NY 12210

 +1 518 465 1400

 naiplatform.com

