

1680 14TH STREET

OAKLAND, CA

FOR LEASE
18,825± SF WAREHOUSE/FLEX BUILDING
UPGRADES UNDERWAY - DIVISIBLE INTO 2 UNITS



Brian Barden, Principal
E \\ bbarden@lee-associates.com
P \\ 510.903.7616 | LIC# 01439766

Ryan Davidson, Principal
E \\ rdavidson@lee-associates.com
P \\ 510.469.3300 | LIC# 01400582

Lee & Associates Oakland Commercial Real Estate \ 555 12th Street, Suite 1725, Oakland, CA 94607 \ www.lee-associates.com

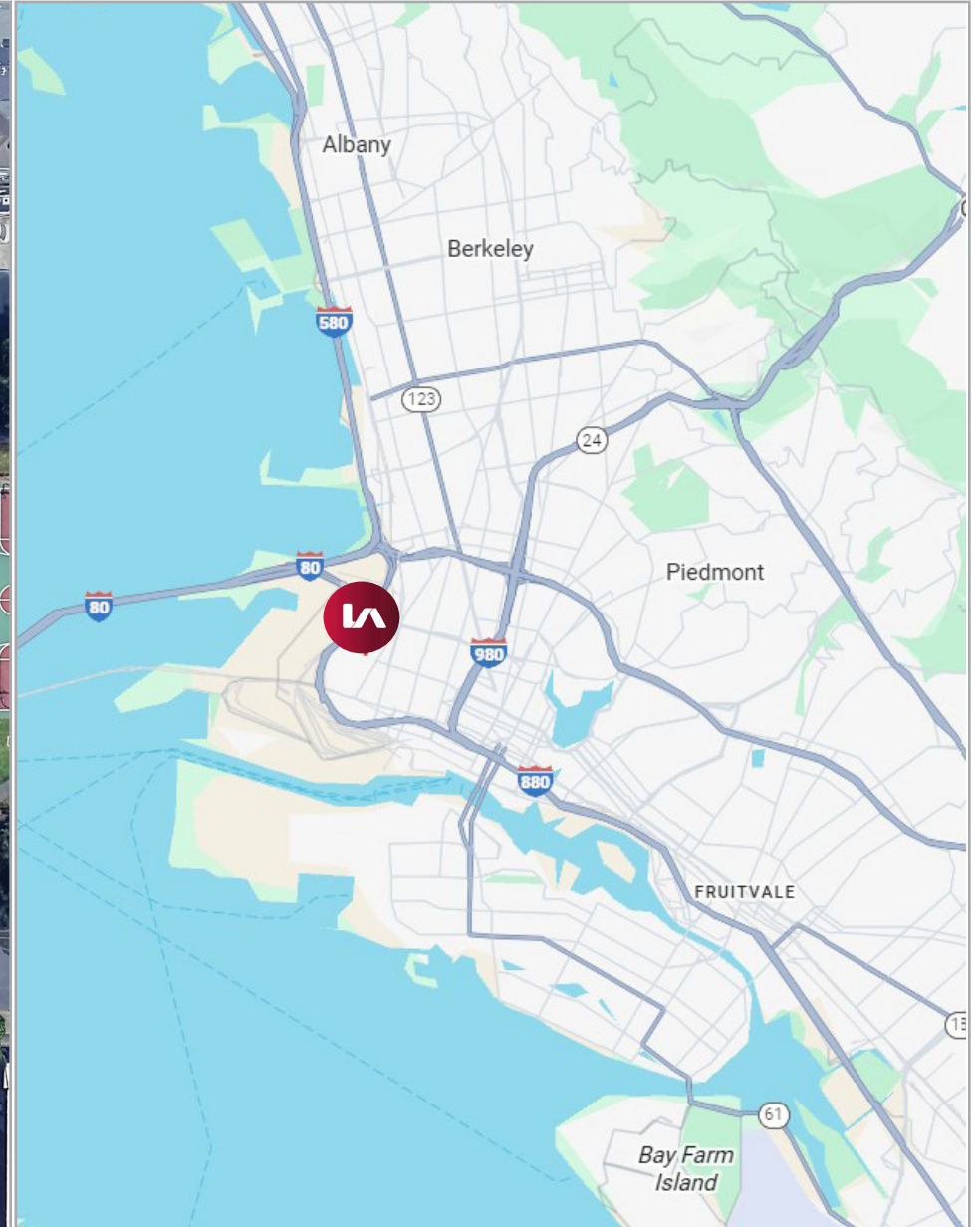
All information furnished regarding property for sale, rental or financing is from sources deemed reliable, but no warranty or representation is made to the accuracy thereof and same is submitted to errors, omissions, change of price, rental or other conditions prior to sale, lease or financing or withdrawal without notice. No liability of any kind is to be imposed on the broker herein.

PROPERTY FEATURES

Building Size:	18,825± SF Warehouse/Flex Building
Office:	3,875± SF 2-Story Office
Divisible:	9,480± SF with Grade Level Loading 9,345± SF with 2 Recessed Docks
Construction:	Poured in Place Concrete Construction
Clear Height:	18' - 20"
Power:	200 Amps Existing & Pending Application with PG&E to Upgrade to 400 Amps @ 480 Volts
Yard/Parking:	4,500± SF Fenced, Paved Yard with Motorized Gate . Can be Striped for 24 Parking Spaces
Recent Improvements:	New Roof, Skylights, and Paint
Rennovations:	Sprinklers Coming 2nd Quarter of 2026
Zoning:	HBX-2 (Click Here for Zoning Codes) *Permitted Uses Highlighted Below
Location:	3 Blocks from Ballers Baseball Stadium and the Vibrant Prescott Market Hall
Price:	Call Exclusive Agents



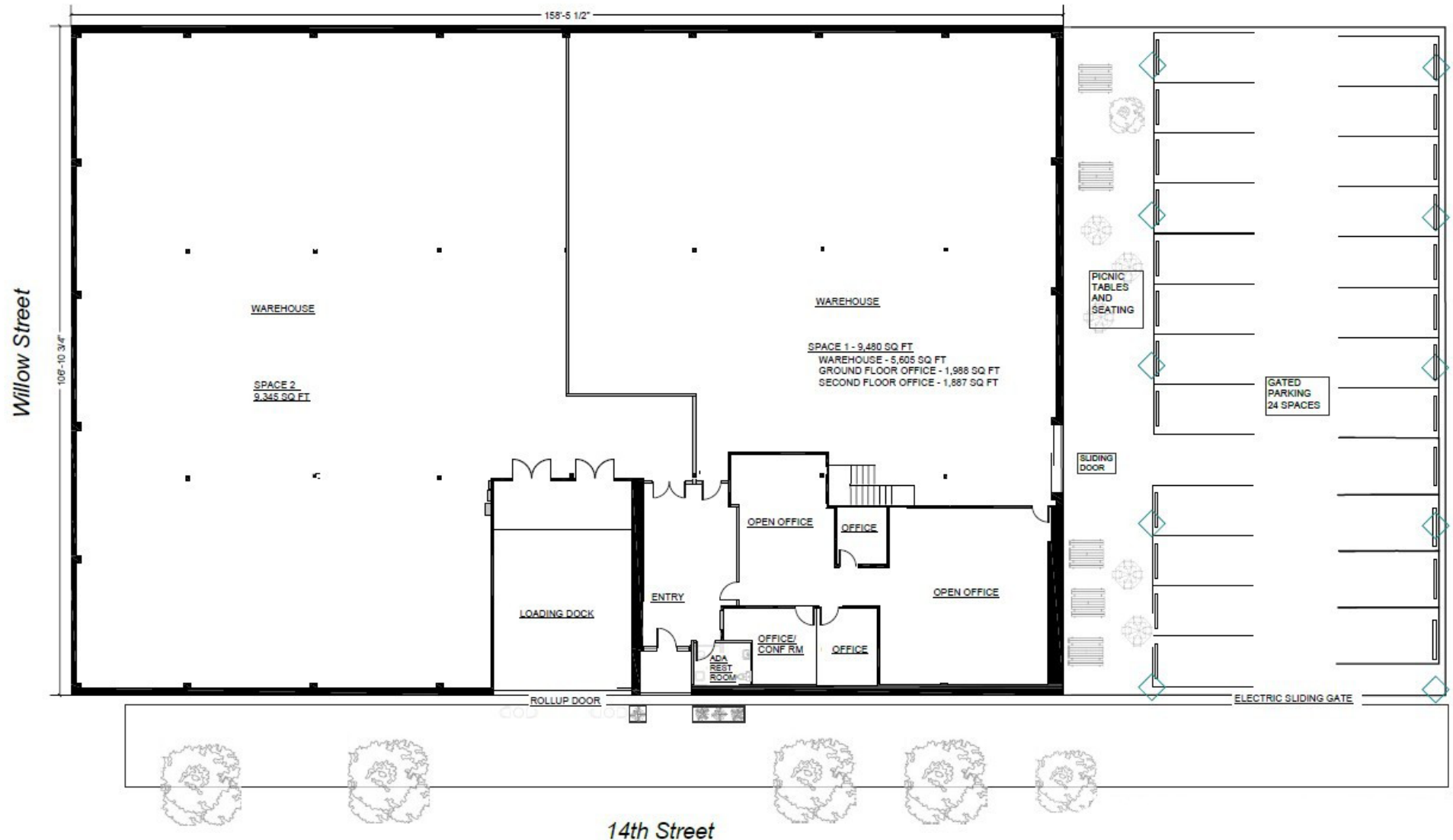
PROPERTY AERIAL & MAP



Lee & Associates Oakland Commercial Real Estate \ 555 12th Street, Suite 1725, Oakland, CA 94607 \ www.lee-associates.com

All information furnished regarding property for sale, rental or financing is from sources deemed reliable, but no warranty or representation is made to the accuracy thereof and same is submitted to errors, omissions, change of price, rental or other conditions prior to sale, lease or financing or withdrawal without notice. No liability of any kind is to be imposed on the broker herein.

PROPERTY FLOOR PLAN



PROPERTY & NEIGHBORHOOD PHOTOS

**LEE &
ASSOCIATES**
COMMERCIAL REAL ESTATE SERVICES



Lee & Associates Oakland Commercial Real Estate \ 555 12th Street, Suite 1725, Oakland, CA 94607 \ www.lee-associates.com

All information furnished regarding property for sale, rental or financing is from sources deemed reliable, but no warranty or representation is made to the accuracy thereof and same is submitted to errors, omissions, change of price, rental or other conditions prior to sale, lease or financing or withdrawal without notice. No liability of any kind is to be imposed on the broker herein.

OAKLAND

Chapter 17.134) in the corresponding zone.

"L" designates activities subject to certain limitations listed at the bottom of the table.

"—" designates uses that are prohibited in the corresponding zone.

Table 17.65.01: Permitted, Conditionally Permitted, and Prohibited Activities

Activity	Regulations				Additional Regulations
	HBX-1	HBX-2	HBX-3	HBX-4	
Residential Activities					
Permanent Residential	P	P	P	P	17.65.040
Residential Care	P(L1)	P(L1)	P(L1)	P(L1)	17.103.010
Supportive Housing	P	P	P	P	
Transitional Housing	P	P	P	P	
Emergency Shelter	P(L1)(L2) (L6)	P(L1)(L2) (L6)	P(L1)(L2) (L6)	P(L1)(L2) (L6)	17.103.010 17.103.015
Semi-Transient Residential	P	P	P	P	17.103.010
Bed and Breakfast	—	—	—	C	17.10.125
Civic Activities					
Essential Service	P	P	P	P	
Limited Child-Care	P	P	P	P	
Community Assembly	P(L3)	P(L3)	P(L3)	P(L3)	
Recreational Assembly	P(L3)	P(L4)	P(L4)	P(L4)	
Community Education	C	C	C	C	
Nonassembly Cultural	P(L3)	P(L4)	P(L4)	P(L4)	
Administrative	P(L3)	P(L4)	P(L4)	P(L4)	
Health Care	C	C	C	C	
Special Health Care	C(L6)	C(L6)	C(L6)	C(L6)	17.103.020
Utility and Vehicular	C	C	C	C	
Extensive Impact	C	C	C	C	17.102.440
Commercial Activities					
General Food Sales	P(L3)	P(L3)	P(L3)	P(L3)	
Full Service Restaurant	P(L5)	P(L5)	P(L5)	P(L3)	
Limited Service Restaurant and Cafe	P(L5)	P(L5)	P(L5)	P(L3)	
Fast-Food Restaurant	—	—	—	—	17.103.030
Convenience Market	C	C	C	C	17.103.030

OAKLAND

Activity	Regulations				Additional Regulations
	HBX-1	HBX-2	HBX-3	HBX-4	
Alcoholic Beverage Sales	C	C	C	C	17.103.030
Mechanical or Electronic Games	P	P	P	P	
Medical Service	P(L3)	P(L3)	P(L3)	P(L3)	
General Retail Sales	P(L3)	P(L4)	P(L4)	P(L4)	
Large-Scale Combined Retail and Grocery Sales	—	—	—	—	
Consumer Service	P(L3)(L7)	P(L7)	P(L7)	P(L7)	
Consultative and Financial Service	P(L3)	P(L4)	P(L4)	P(L4)	
Check Cashier and Check Cashing	—	—	—	—	17.103.040
Consumer Cleaning and Repair Service	P(L4)	P(L4)	P(L4)	P(L4)	
Consumer Dry Cleaning Plant	—	C	C	C	
Artisan Production	P(L3)	P	P	P	
Group Assembly	P(L8)(L16)(L18)	P(L8)(L16)(L18)	P(L8)(L16)(L18)	P(L8)(L16)(L18)	
Personal Instruction and Improvement Services	GP	P	P	P	
Administrative	P(L3)	P	P	P(L4)	
Business, Communication, and Media Service	P(L5)	P	P	P	
Broadcasting and Recording Service	P(L18)	P(L18)	P(L18)	P(L18)	
Research Service	P(L3)(L9)	P(L4)(L9)	P(L4)(L9)	P(L4)(L9)	
General Wholesale Sales	P(L5)	P(L4)	P(L4)	P(L4)	
Transient Habitation	C	C	C	C	17.103.050
Building Material Sales	—	P(L9)(L10)	P(L9)(L10)	P(L9)(L10)	
Automotive and other Light Vehicle Sales and Rental	—	—	—	—	
Automobile and Other Light Vehicle Gas Station and Servicing	—(L11)	—	—	—	
Automotive and Other Light Vehicle Repair and Cleaning	—(L11)	—	—	—	
Taxi and Light Fleet-Based Service	—	C	C	C	

OAKLAND

Activity	Regulations				Additional Regulations
	HBX-1	HBX-2	HBX-3	HBX-4	
Automotive Fee Parking	—	—	—	—	
Animal Boarding	C(L15)	C(L15)	C(L15)	C(L15)	
Animal Care	P	P	P	P	
Undertaking Service	—	—	—	—	
Industrial Activities					
Custom Manufacturing	P(L3)(L9)(L17)	P(L3)(L9)(L17)	P(L3)(L9)(L17)	P(L4)(L9)(L17)	17.120
Light Manufacturing	P(L3)(L9)(L17)	P(L3)(L9)(L17)	P(L3)(L9)(L17)	P(L4)(L9)(L17)	17.120
General Manufacturing	—	—	—	—	
Heavy/High Impact Manufacturing	—	—	—	—	
Research and Development	P(L3)(L9)(L19)	P(L3)(L9)(L19)	P(L3)(L9)(L19)	P(L3)(L9)(L19)	
Construction Operations	—	C(L9)(L10)	C(L9)(L10)	C(L9)(L10)	
Warehousing, Storage and Distribution-Related					
A. General Warehousing, Storage and Distribution	C(L9)(L10)	P(L3)(L9)	P(L3)(L9)	P(L3)(L9)	
B. General Outdoor Storage	—	C(L15)	C(L15)	C(L15)	
C. Self- or Mini-Storage	—	C(L12)	C(L12)	C(L12)	
D. Container Storage	—	—	—	—	
E. Salvage/Junk Yards	—	—	—	—	
Regional Freight Transportation	—	—	—	—	
Trucking and Truck-Related	—	—		—	
Recycling and Waste-Related					
A. Satellite Recycling Collection Centers	—(L20)	—(L20)	—(L20)	—(L20)	
A. Primary Recycling Collection Centers	—	—	—	—	
Hazardous Materials Production, Storage, and Waste Management-Related	—	—	—	—	
Agricultural and Extractive Activities					
Plant Nursery	C	C	C	C	
Limited Agriculture	P(L13)	P(L13)	P(L13)	P(L13)	