

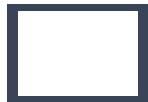
# Property Flyer Frame

Additional breakdown of current flyer design to include the following:

- 1. Single page options.** Vertical and horizontal shown. The color bar should only be available on single page documents. We should limit to colors shown. This will ensure we're meeting accessibility standards on our type and logo, as well as the best flexibility with images and icon colors.



White (preferred)



Midnight

- 2. Two page layouts.** Options for page two flyers shown.

- 3. Space plan flyers.** Including two options for space plans, in an effort to eliminate the awkwardness of having to fit plans into a given flyer frame. When I worked for tenant rep brokers, I loved a clean floor plan that was easy to insert into a tour book.





## Abbreviated contact info for six brokers (pg. 1)

- Esti con consequ plab illant.
- Qui dolores simagna tempori busdae venim reptaes tiurit, tecust, verum res aut harum quia que vendis sandelibusam est aut volorporos solent aboreria id que consequi dolupis int
- Eatem ut fugit plabore qui consernatur molecatemque et dolores tectureni sus.
- Riatem rerum eos is alibus re, officia tiissus alit opta corem aut volores ea voleseque et voluptate sandigenitem et rerios.
- Itatem nonse rent, et vololibus mo conest, ut voluptam quo doluptat ea poreiur autempo reperibus.

## For further information

**First Lastname**, Title  
+1 555 555 5555  
firstname.lastname@avisonyoung.com

**First Lastname**, Title  
+1 555 555 5555  
firstname.lastname@avisonyoung.com

**First Lastname**, Title  
+1 555 555 5555  
firstname.lastname@avisonyoung.com

**First Lastname**, Title  
+1 555 555 5555  
firstname.lastname@avisonyoung.com

**First Lastname**, Title  
+1 555 555 5555  
firstname.lastname@avisonyoung.com

avisonyoung.com





## Light Industrial Space in Eastview, Regina

Open shop space is available in this multi tenant industrial property. The 19,920 SF building sits on a 84,718 SF corner lot providing ample compound space. Compound space is negotiable with the lease.

This location is also available for sale as an investment property.

Available Unit	Size
116 4th Avenue East	2,570 sf



Asking Lease Rate:  
\$11.50 psf



Opt Costs:  
\$4.50 psf est



Zoning:  
IL - Light Industrial



Available Size:  
2,570 sf

**For further  
information**

**Linely Schaefer**

Managing Director, Broker  
306 559 9009

linely.schaefer@avisonyoung.com

**Hali Lawrence**

Commercial Sales & Leasing  
306 559 9006

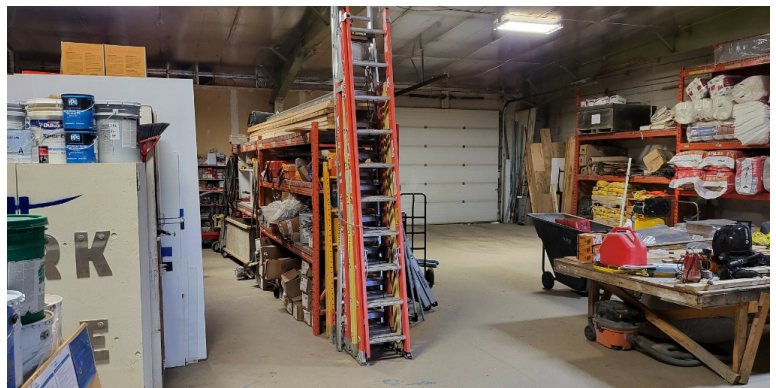
hali.lawrence@avisonyoung.com

avisonyoung.com



## Industrial Property For Lease

975 McDonald Street, Regina, SK



### **Linely Schaefer**

Managing Director, Broker  
306 559 9009

[linely.schaefer@avisonyoung.com](mailto:linely.schaefer@avisonyoung.com)

### **Hali Lawrence**

Commercial Sales & Leasing  
306 559 9006

[hali.lawrence@avisonyoung.com](mailto:hali.lawrence@avisonyoung.com)

**AVISON  
YOUNG**



# AVISON YOUNG

## Office Condominium For Sale

50 West 47th Street  
New York, NY 10036

---

## Investment gem in the diamond district

- Full floor office with 28,981± RSF
- Space will be delivered vacant and raw
- Efficient floor plate
- Nearby Rockefeller Center Station is serviced by the B, D, F and M subway lines; Grand Central Terminal and Times Square are within a short walking distance



State-of-the-art  
security

---



Exclusive  
health club

---



Secure underground  
and valet parking

---



Secure underground  
and valet parking

**For further  
information**

**James Nelson**  
Principal  
+1 212 729 7140

**David Lawrence**  
Associate Director  
+1 212 230 5968

**Carter Lovejoy**  
Senior Associate  
+1 212 230 5968

[avisonyoung.com](http://avisonyoung.com)





# AVISON YOUNG

## **Class-A Office For Lease**

The Scribner Building  
597 5th Avenue  
New York, NY 10017

---

## **Historic NYC landmark, meets modern boutique office space**

- Entire 8th floor (6,364 SF) available
- Creative pre-built ready for occupancy
- Side-core building offering an efficient and flexible layout
- Abundant natural light
- Brand new tenant-controlled HVAC
- Full-floor identity
- The Scribner Building was designated a New York City landmark in 1982
- Located in the heart of the Fifth Avenue shopping corridor

**For further  
information**

**James Nelson**  
Principal  
+1 212 729 7140

**David Lawrence**  
Associate Director  
+1 212 230 5968

**Carter Lovejoy**  
Senior Associate  
+1 212 230 5968

[avisonyoung.com](http://avisonyoung.com)





# AVISON YOUNG

## Office Condominium For Sale

50 West 47th Street  
New York, NY 10036

## Investment gem in the diamond district

- Full floor office with 28,981± rentable square feet
- Space will be delivered vacant and raw
- Efficient floor plate
- Nearby Rockefeller Center Station is serviced by the B, D, F and M subway lines, while major hubs such as Grand Central Terminal and Times Square are within a short walking distance



State-of-the-art security



Exclusive health club



Electronic charging stations

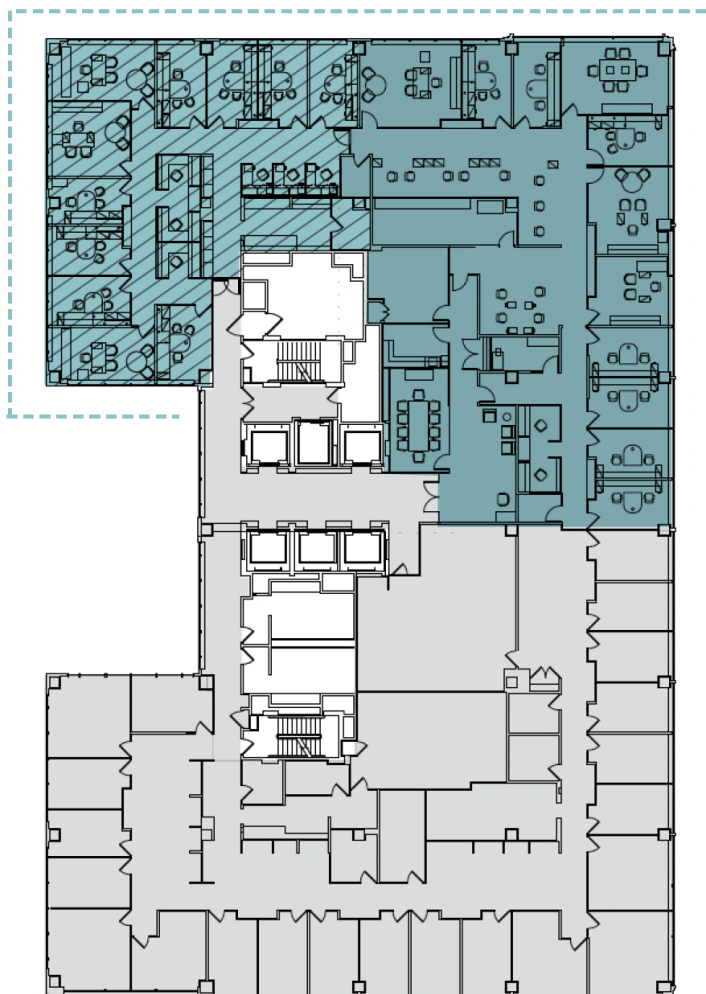


Underground and valet parking



# Trophy Office Space For Lease

Alexander Court, North Tower  
2001 K Street NW, Washington, DC 20006



20th Street NW

## Get more information

**First Lastname, Title**

D 555 555 5555

C 555 555 5555

firstname.lastname@avisonyoung.com

**First Lastname, Title**

D 555 555 5555

C 555 555 5555

firstname.lastname@avisonyoung.com

**First Lastname, Title**

D 555 555 5555

C 555 555 5555

firstname.lastname@avisonyoung.com

**First Lastname, Title**

D 555 555 5555

C 555 555 5555

firstname.lastname@avisonyoung.com

**First Lastname, Title**

D 555 555 5555

C 555 555 5555

firstname.lastname@avisonyoung.com

**AVISON  
YOUNG**

avisonyoung.com





# AVISON YOUNG

## **Class-A Office For Lease**

The Scribner Building  
597 5th Avenue  
New York, NY 10017

---

**Headline area should allow for up to four lines of copy, at most. One last line.**

- Entire 8th floor (6,364 SF) available
- Creative pre-built ready for occupancy
- Side-core building offering an efficient and flexible layout
- Abundant natural light
- Brand new tenant-controlled HVAC
- Full-floor identity
- The Scribner Building was designated a New York City landmark in 1982
- Located in the heart of the Fifth Avenue shopping corridor

**For further  
information**

**James Nelson**  
Principal  
+1 212 729 7140

**David Lawrence**  
Associate Director  
+1 212 230 5968

**Carter Lovejoy**  
Senior Associate  
+1 212 230 5968

[avisonyoung.com](http://avisonyoung.com)





## Abbreviated contact info for six brokers (pg. 1)

- Esti con consequ plab illant.
- Qui dolores simagna tempori busdae venim reptaes tiurit, tecust, verum res aut harum quia que vendis sandelibusam est aut volorporos solent aboreria id que consequi dolupis int
- Eatem ut fugit plabore qui consernatur molecatemque et dolores tectureni sus.
- Riatem rerum eos is alibus re, officia tiissus alit opta corem aut volores ea voleseque et voluptate sandigenitem et rerios.
- Itatem nonse rent, et valoribus mo conest, ut voluptam quo doluptat ea poreiur autempo reperibus.

## Get more information

**First Lastname**, Title  
D 555 555 5555  
C 555 555 5555  
[firstname.lastname@avisonyoung.com](mailto:firstname.lastname@avisonyoung.com)

**First Lastname**, Title  
D 555 555 5555  
C 555 555 5555  
[firstname.lastname@avisonyoung.com](mailto:firstname.lastname@avisonyoung.com)

**First Lastname**, Title  
D 555 555 5555  
C 555 555 5555  
[firstname.lastname@avisonyoung.com](mailto:firstname.lastname@avisonyoung.com)

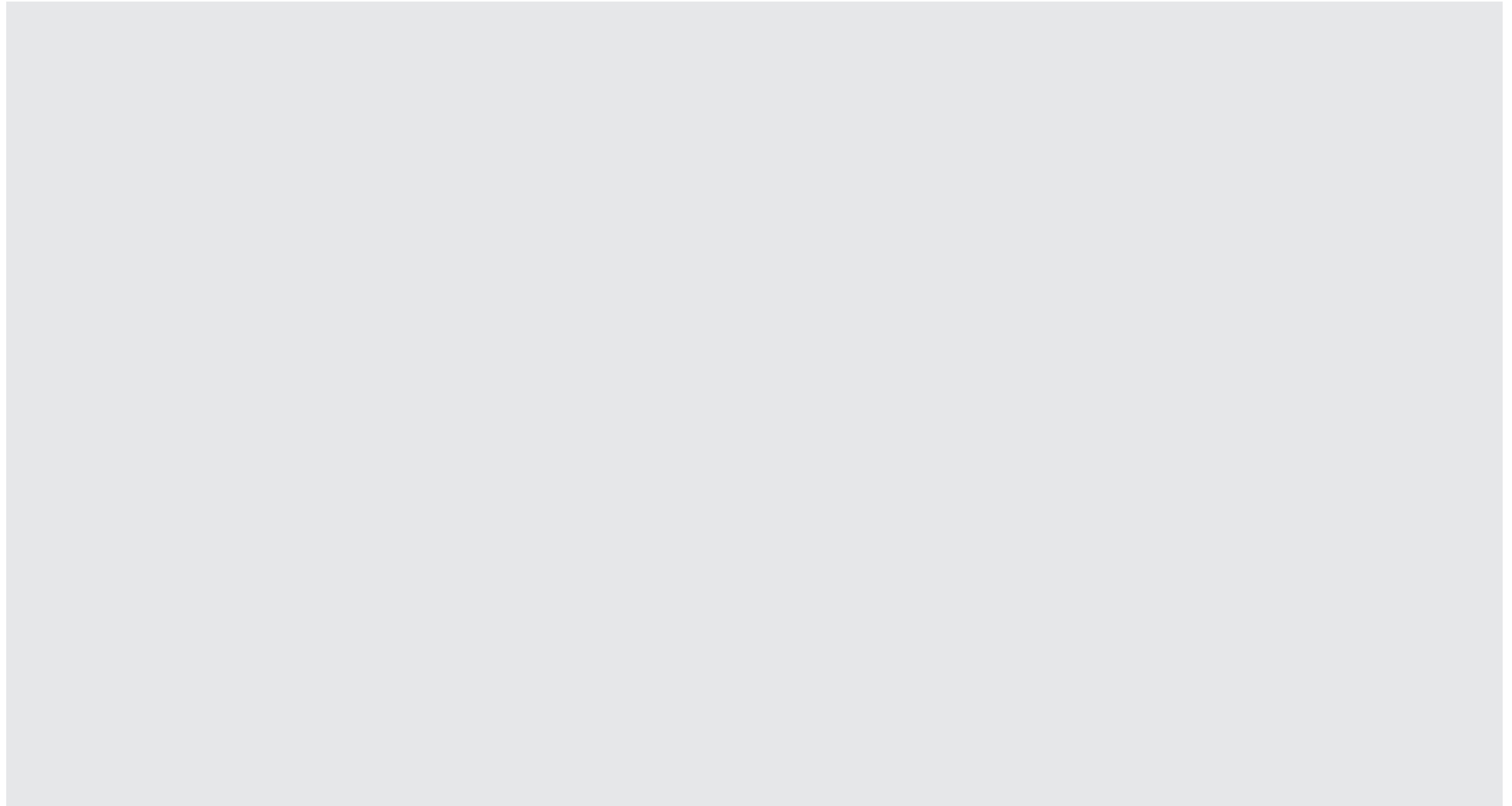
**First Lastname**, Title  
D 555 555 5555  
C 555 555 5555  
[firstname.lastname@avisonyoung.com](mailto:firstname.lastname@avisonyoung.com)

[avisonyoung.com](http://avisonyoung.com)



**Full 8th floor**  
**14,525 sf**

Alexander Court, North Tower  
2001 K Street NW  
Washington, DC 20006



**For further  
information**

**John Ryan**  
Principal  
+1 212 729 4971

**Dominic Perkovic**  
Associate  
+1 212 735 8553

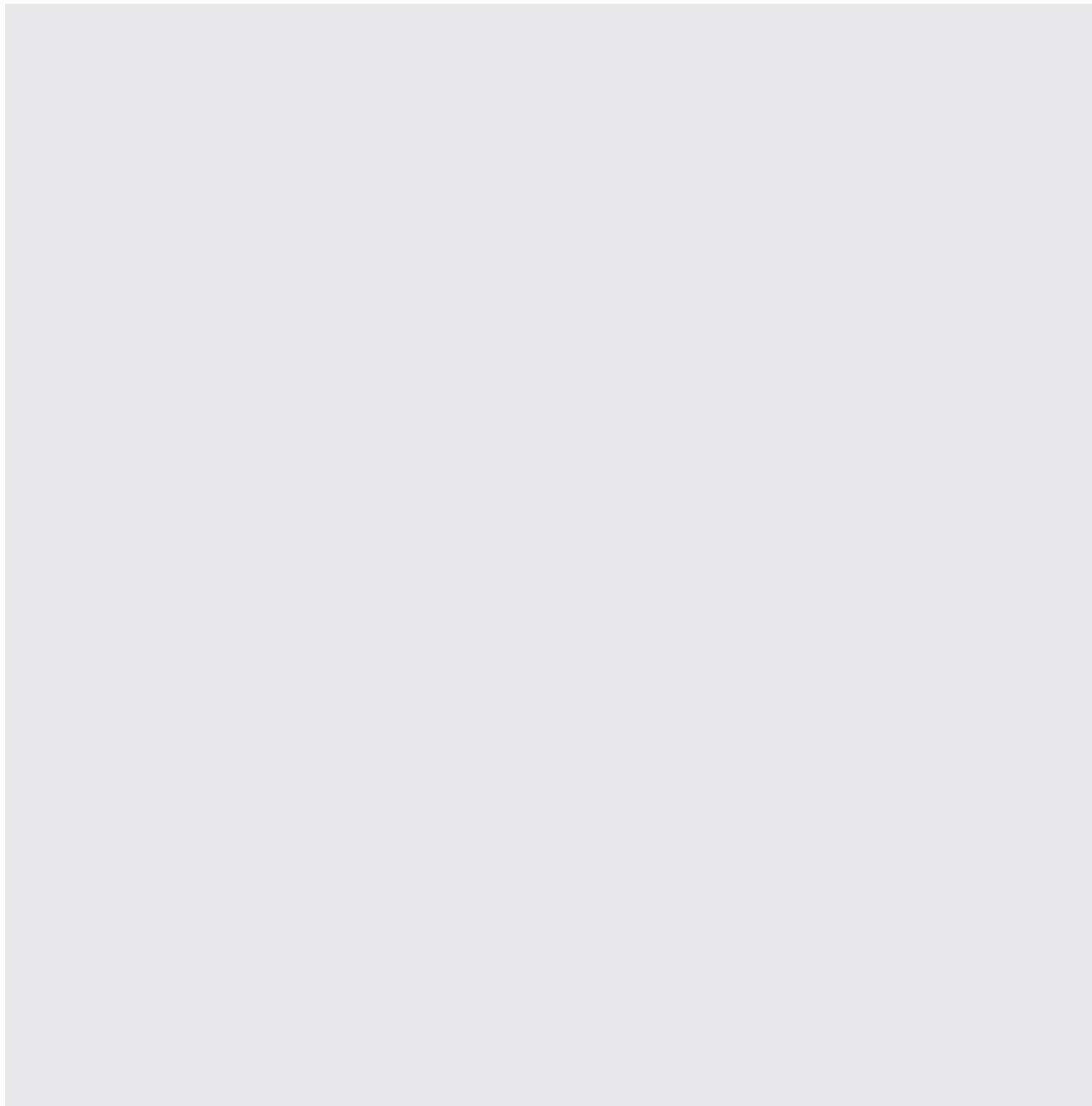
**Arthur Mirante**  
Principal  
+1 212 230 1896

**Evan Foley**  
Associate  
+1 212 230 5974



**Full 8th floor**  
**14,525 sf**

Alexander Court, North Tower  
2001 K Street NW  
Washington, DC 20006



**For further  
information**

**James Nelson**  
Principal  
+1 212 729 7140

**David Lawrence**  
Associate Director  
+1 212 230 5968

**Carter Lovejoy**  
Senior Associate  
+1 212 230 5968

**AVISON  
YOUNG**