



FOR LEASE
3385-3400 Dexter Court
Davenport, Iowa 52807

820 – 9,620 SF Available



Jim Tansey
563 349 3030
jtansey@thehawkeyegroup.com

Shawn Stuenkel
309 368 3419
sstuenkel@thehawkeyegroup.com

Max Gellerman
563 676 2806
mgellerman@thehawkeyegroup.com

FOR LEASE

3385 & 3400 DEXTER COURT

DAVENPORT, IA 52807

PRICE

- **\$18.00/SF, NNN**
- PAVILION 1 CAM: \$11.49/SF
- PAVILION 2 CAM: \$10.47/SF
- PAVILION 3 CAM: \$12.76/SF
- MINIMUM 5-YEAR LEASE

AVAILABLE SPACE

- 3400 DEXTER CT – **PAVILION 1**
 - SUITE 104 – 820 SF
 - SUITE 105 – 2,442 SF
- 3385 DEXTER CT – **PAVILION 2**
 - SUITE 102 – 3,150 SF
- 3385 DEXTER CT – **PAVILION 3**
 - SUITE 107 – 2,325 SF
- LOWER LEVEL – **PAVILION 3**
 - 3,480 SF
 - 6,140 SF
 - 9,620 SF (COMBINED SF)



CONTACT US



Jim Tansey
563 349 3030
jtansey@thehawkeyegroup.com



Shawn Stuenkel
309 368 3419
sstuenkel@thehawkeyegroup.com



Max Gellerman
563 676 2806
mgellerman@thehawkeyegroup.com

FOR LEASE

3385 & 3400 DEXTER COURT

DAVENPORT, IA 52807



PROPERTY FEATURES

- BEAUTIFUL MEDICAL CAMPUS
- CONVENIENT LOCATION OFF ELMORE AVENUE
- GREAT VISIBILITY
- AMPLE SURFACE PARKING
- NEAR ABUNDANT RETAIL, RESTAURANTS & HOTELS



Jim Tansey | 563.349.3030 | jtansey@thehawkeyegroup.com

Shawn Stuenkel | 309.368.3419 | [sstuenkel@thehawkeyegroup.com](mailto:ssstuenkel@thehawkeyegroup.com) | Max Gellerman | 563.676.2806 | mgellerman@thehawkeyegroup.com

FOR LEASE

3385 & 3400 DEXTER COURT

DAVENPORT, IA 52807



Jim Tansey | 563.349.3030 | jtansey@thehawkeyegroup.com

Shawn Stuenkel | 309.368.3419 | ssstuenkel@thehawkeyegroup.com | Max Gellerman | 563.676.2806 | mgellerman@thehawkeyegroup.com

FOR LEASE

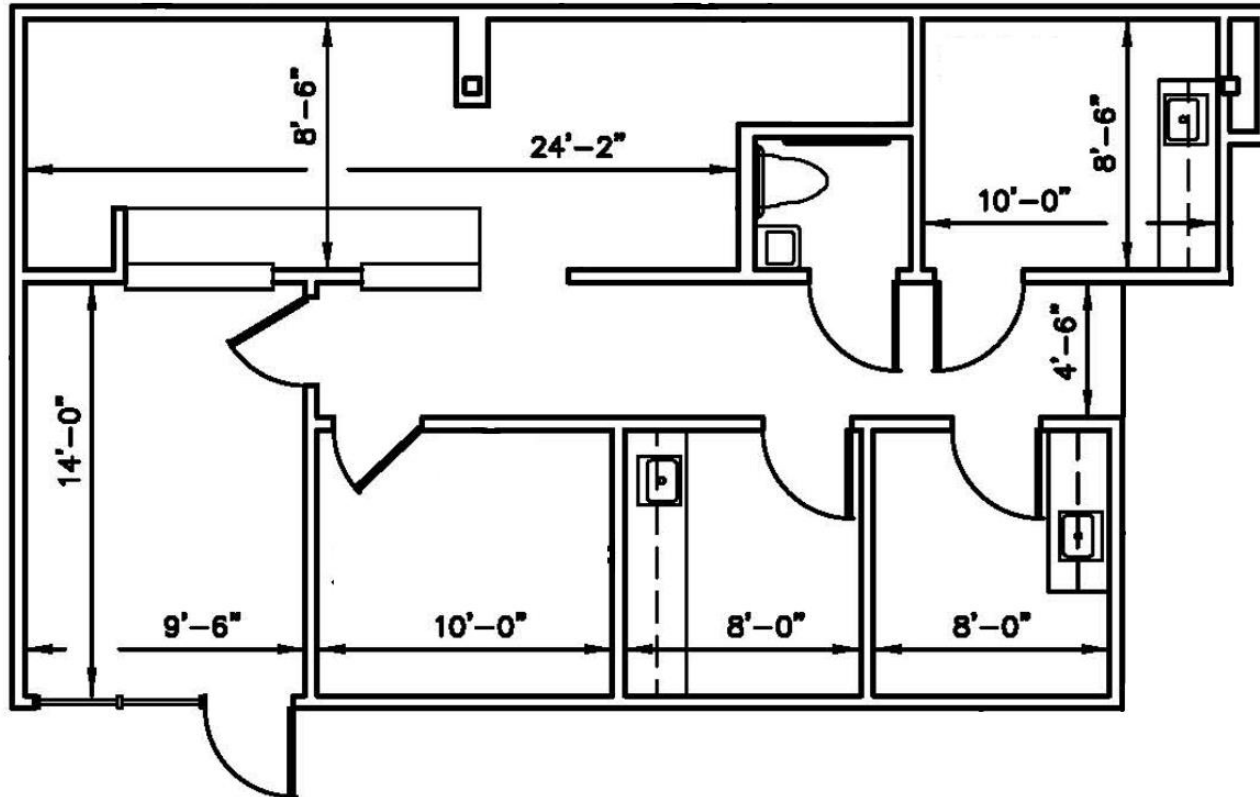
3385 & 3400 DEXTER COURT

DAVENPORT, IA 52807



PAVILION 1 – 820 SF

SUITE 104



Jim Tansey | 563.349.3030 | jtansey@thehawkeyegroup.com

Shawn Stuenkel | 309.368.3419 | ssstuenkel@thehawkeyegroup.com | Max Gellerman | 563.676.2806 | mgellerman@thehawkeyegroup.com

FOR LEASE

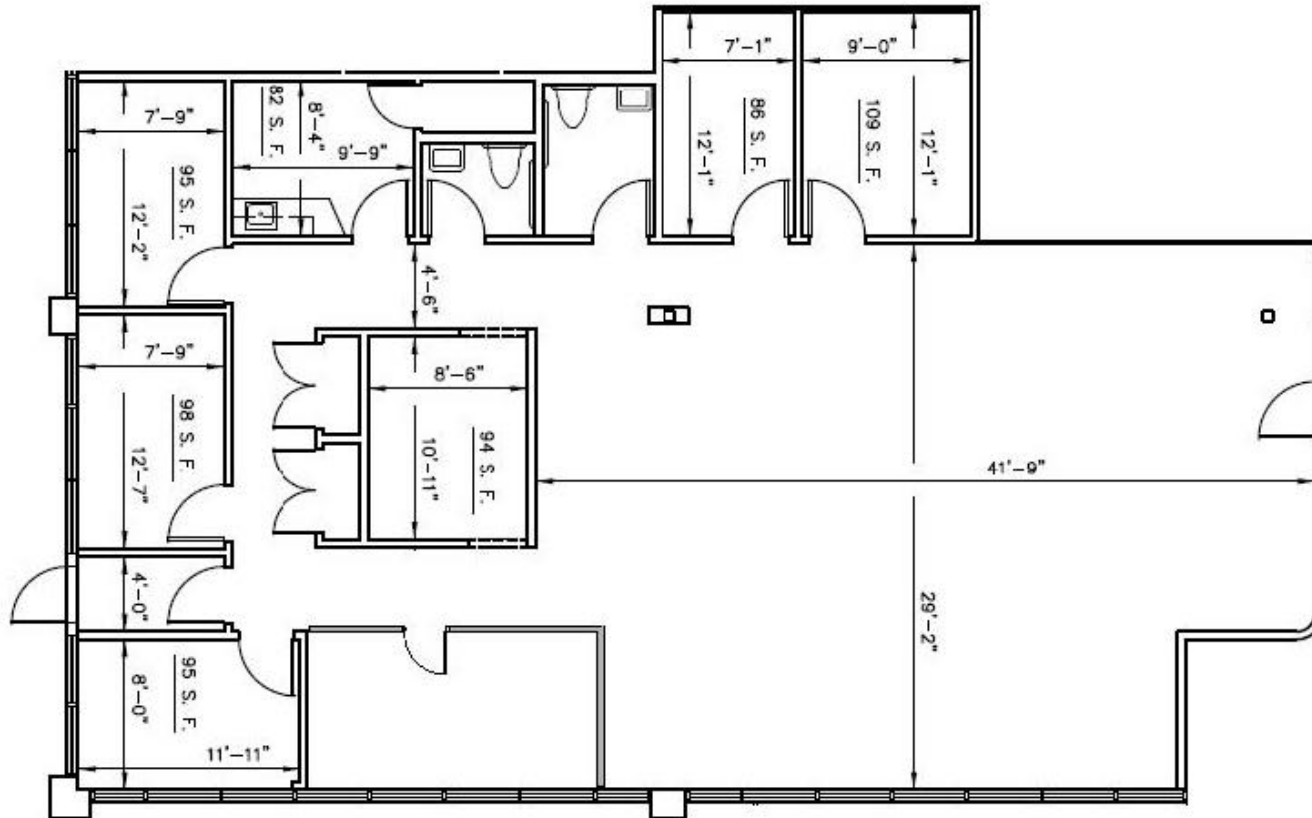
3385 & 3400 DEXTER COURT

DAVENPORT, IA 52807



PAVILION 1 – 2,442 SF

SUITE 105



Jim Tansey | 563.349.3030 | jtansey@thehawkeyegroup.com

Shawn Stuenkel | 309.368.3419 | ssstuenkel@thehawkeyegroup.com | Max Gellerman | 563.676.2806 | mgellerman@thehawkeyegroup.com

FOR LEASE

3385 & 3400 DEXTER COURT

DAVENPORT, IA 52807



PAVILION 2 – 3,150 SF

SUITE 102



SHIVEHATTERY
ARCHITECTURE+ENGINEERING

144 50th Ave W | 2023.10.31
Bottendorf, IA 52722 | 212201476

Jim Tansey | 563.349.3030 | jtansey@thehawkeyegroup.com

Shawn Stuenkel | 309.368.3419 | ssstuenkel@thehawkeyegroup.com | Max Gellerman | 563.676.2806 | mgellerman@thehawkeyegroup.com

FOR LEASE

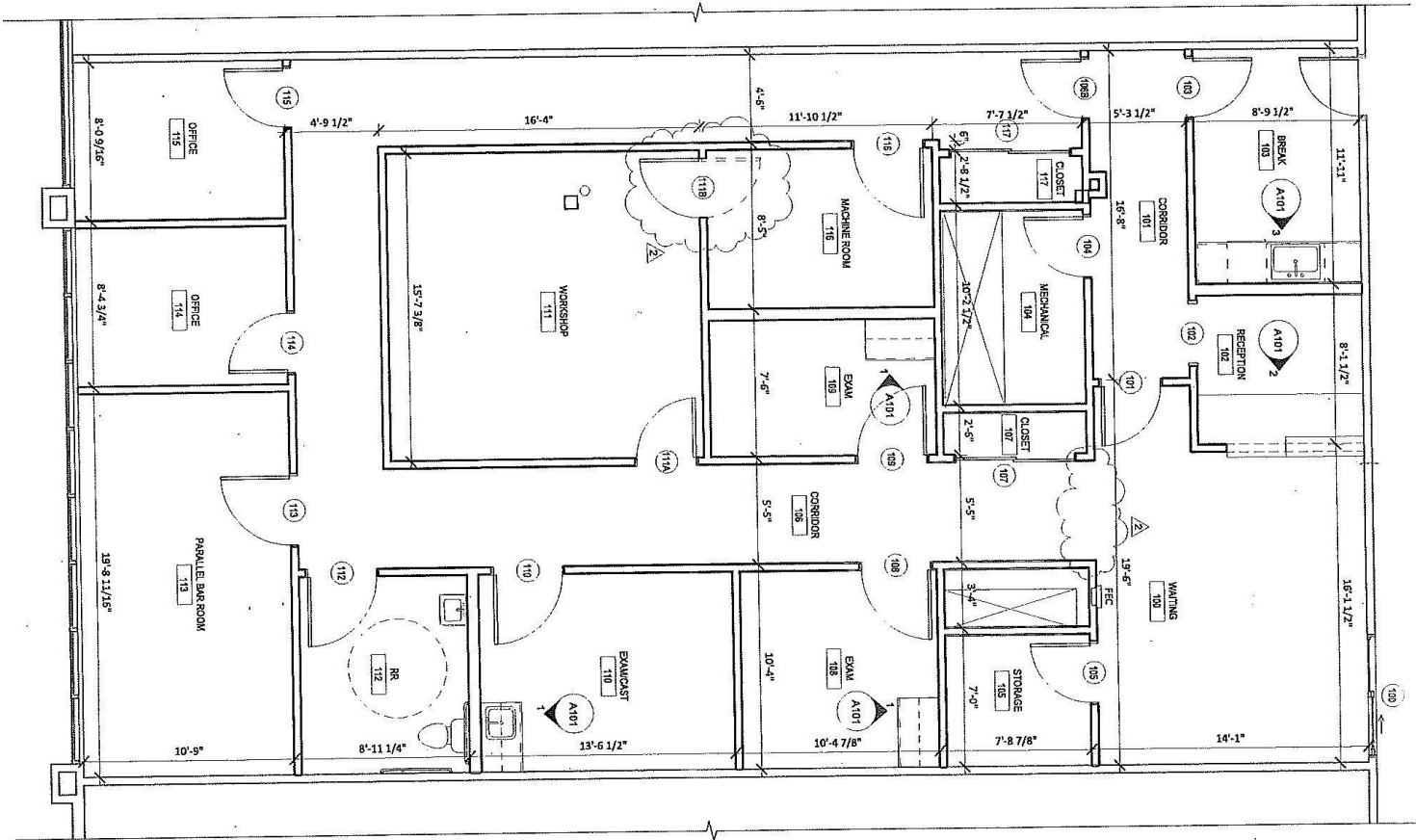
3385 & 3400 DEXTER COURT

DAVENPORT, IA 52807



PAVILION 3 – 2,325 SF

SUITE 107



Jim Tansey | 563.349.3030 | jtansey@thehawkeyegroup.com

Shawn Stuenkel | 309.368.3419 | sstuenkel@thehawkeyegroup.com | Max Gellerman | 563.676.2806 | mgellerman@thehawkeyegroup.com

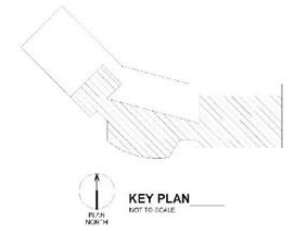
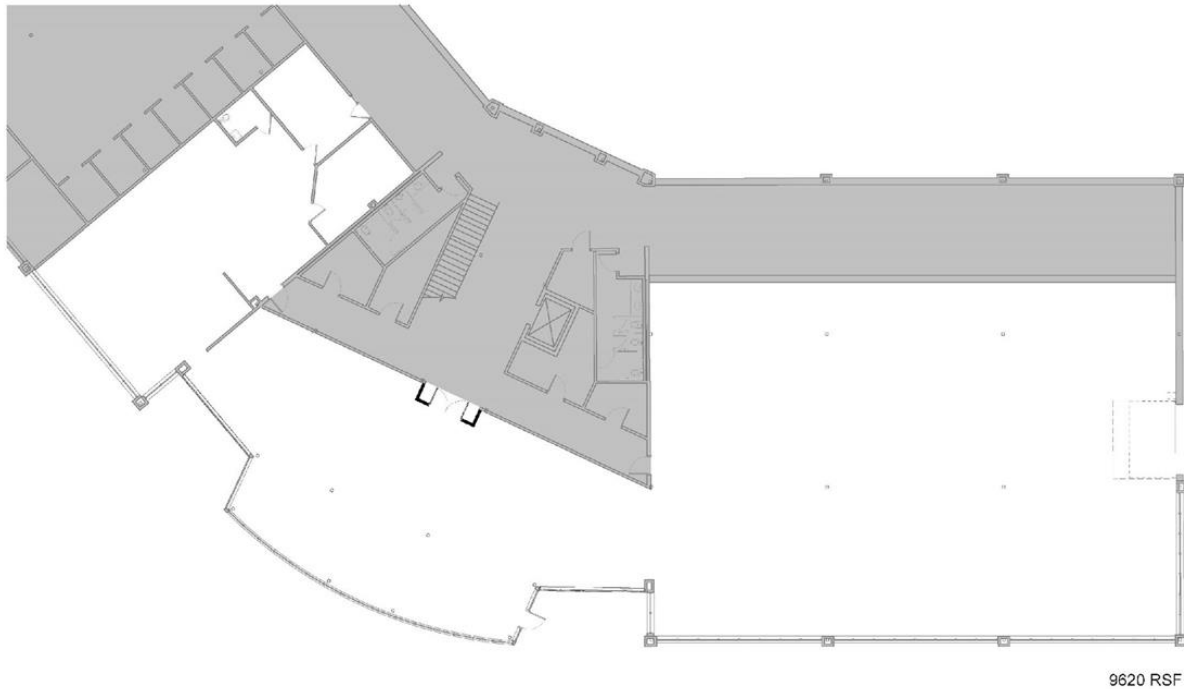
FOR LEASE

3385 & 3400 DEXTER COURT

DAVENPORT, IA 52807



PAVILION 3 – 9,620 SF



SHELL SPACE _____

SHIVEHATTERY
ARCHITECTURE+ENGINEERING

144 58th Ave W, Bettendorf, IA 52722 | 319.326.5256

Jim Tansey | 563.349.3030 | jtansey@thehawkeyegroup.com

Shawn Stuenkel | 309.368.3419 | [sstuenkel@thehawkeyegroup.com](mailto:ssstuenkel@thehawkeyegroup.com) | Max Gellerman | 563.676.2806 | mgellerman@thehawkeyegroup.com

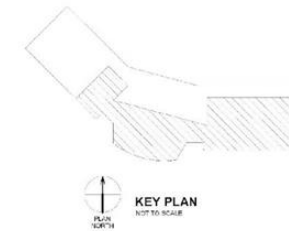
FOR LEASE

3385 & 3400 DEXTER COURT

DAVENPORT, IA 52807



PAVILION 3 – 9,620 SF



9620 RSF

ONE TENANT SPACE

SHIVEHATTERY
ARCHITECTURE+ENGINEERING

144 58th Ave W,
Bettendorf, IA 52722

1.25.22
21152206251

Jim Tansey | 563.349.3030 | jtansey@thehawkeyegroup.com

Shawn Stuenkel | 309.368.3419 | [sstuenkel@thehawkeyegroup.com](mailto:ssstuenkel@thehawkeyegroup.com) | Max Gellerman | 563.676.2806 | mgellerman@thehawkeyegroup.com

FOR LEASE

3385 & 3400 DEXTER COURT

DAVENPORT, IA 52807



PAVILION 3 – 3,480 SF & 6,140 SF



TENANT 1
3480 SF

TENANT 2
6140 SF

TWO TENANT SPACE

SHIVEHATTERY
ARCHITECTURE+ENGINEERING

144 58th Ave W. | 1201/022
Bettendorf IA 52722 | 2152269250

Jim Tansey | 563.349.3030 | jtansey@thehawkeyegroup.com

Shawn Stuenkel | 309.368.3419 | ssuenkel@thehawkeyegroup.com | Max Gellerman | 563.676.2806 | mgellerman@thehawkeyegroup.com