



FOR LEASE

MOVE-IN READY GENERAL OR MEDICAL OFFICE SPACE

2800 Corporate Drive, Flower Mound, TX

LOCATION:

Professional Office Spaces available, located in central Flower Mound - adjacent to the busy FM 2499/Long Prairie Rd corridor.

This two-story, well-maintained office building is situated in an office park development less than 1 mile from Texas Health Presbyterian Hospital and The River Walk at Central Park.

SIZES:

- Suite 201 - 1,161 RSF
- Suite 202 - 1,890 RSF
- Suite 203 - 1,383 RSF

LEASE RATE:

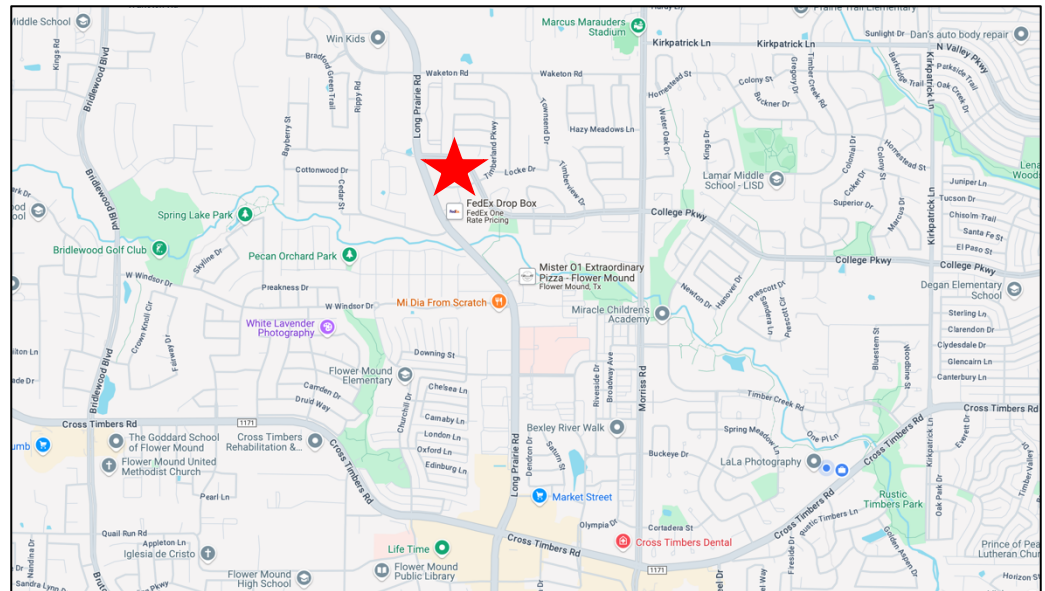
- See Broker for pricing

HIGHLIGHTS:

- Grand Building Entrance and Expansive Foyer.
- Common area restrooms located on both the 1st and 2nd floors.
- Both elevator and stair access to 2nd floor spaces.

AVAILABILITY:

- Immediate



FOR INFORMATION:

Phyllis Garcia | Diana Pergande

972.899.1851 | Phyllis@BridgeRealtyTexas.com | Diana@BridgeRealtyTexas.com

www.BridgeRealtyTexas.com

400 Parker Square, Suite 270H | Flower Mound, TX 75028

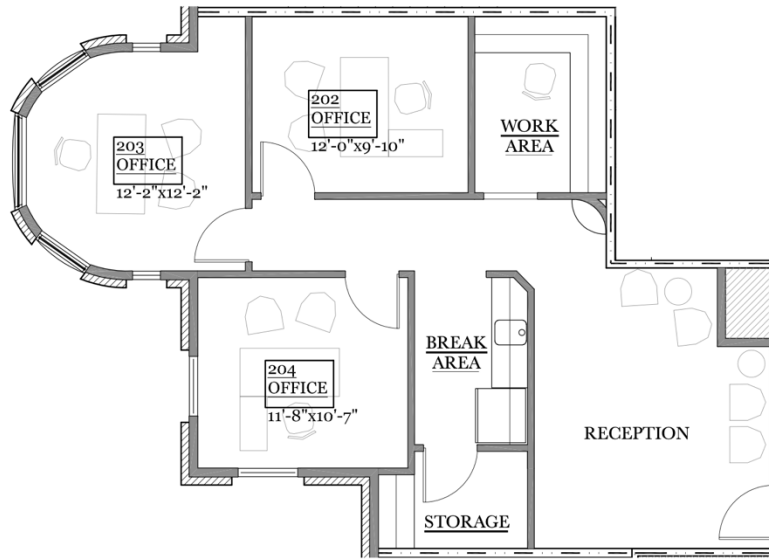
This information is believed to be accurate, but no representation or warranty, express or implied, as to its accuracy or completeness is made by any party. The presentation of this property is submitted subject to errors, omissions, change of price or prior sale or lease, or withdrawal without notice.



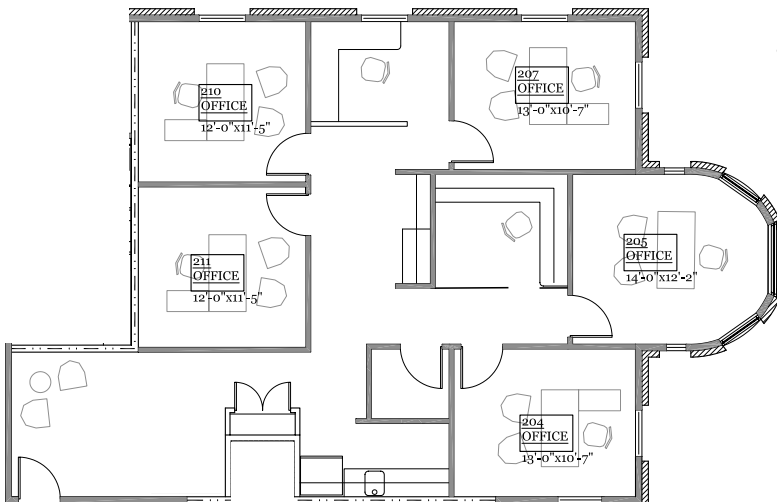
FLOOR PLANS

2800 Corporate Drive
Flower Mound, TX

2800 Corporate Drive
Flower Mound, TX
Suite 201
1,161 RSF



2800 Corporate Drive
Flower Mound, TX
Suite 202
1,890 RSF



2800 Corporate Drive
Flower Mound, TX
Suite 203
1,383 RSF

