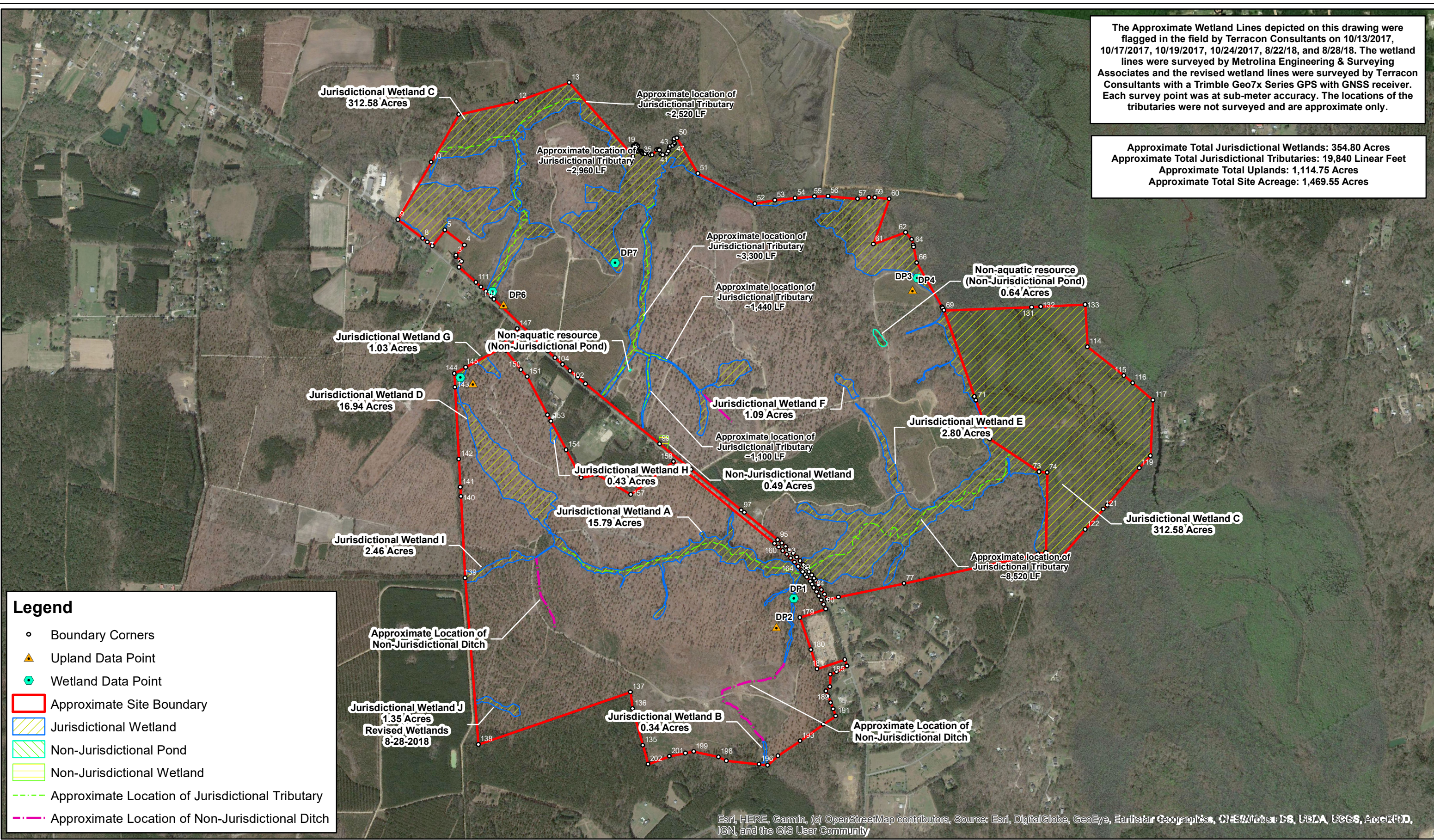


The Approximate Wetland Lines depicted on this drawing were flagged in the field by Terracon Consultants on 10/13/2017, 10/17/2017, 10/19/2017, 10/24/2017, 8/22/18, and 8/28/18. The wetland lines were surveyed by Metrolina Engineering & Surveying Associates and the revised wetland lines were surveyed by Terracon Consultants with a Trimble Geo7x Series GPS with GNSS receiver. Each survey point was at sub-meter accuracy. The locations of the tributaries were not surveyed and are approximate only.

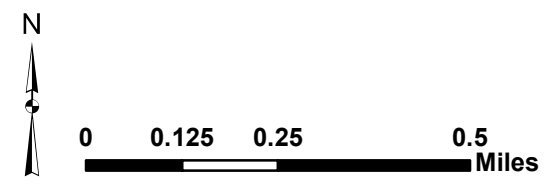
Approximate Total Jurisdictional Wetlands: 354.80 Acres
 Approximate Total Jurisdictional Tributaries: 19,840 Linear Feet
 Approximate Total Uplands: 1,114.75 Acres
 Approximate Total Site Acreage: 1,469.55 Acres



Legend

- Boundary Corners
- ▲ Upland Data Point
- Wetland Data Point
- Approximate Site Boundary
- ▨ Jurisdictional Wetland
- ▨ Non-Jurisdictional Pond
- ▨ Non-Jurisdictional Wetland
- Approximate Location of Jurisdictional Tributary
- Approximate Location of Non-Jurisdictional Ditch

Esri, HERE, Garmin, (c) OpenStreetMap contributors, Source: Esri, DigitalGlobe, GeoEye, Earthstar Geographics, CNES/Airbus DS, USDA, USGS, AeroGRID, IGN, and the GIS User Community



Project No.	EN177123
PM:	JTM
Drawn By:	JTM
Date:	8/27/2019



1450 Fifth Street West N.Charleston, SC 29405
 Phone: 843.884.1234 Fax: 843.884.9234

Depiction of Aquatic Resources Map		EXHIBIT NO.
Highway 61 Parcels		A
Dorchester County	South Carolina	

Boundary Corners

FID	Latitude	Longitude
0	33.004912	-80.325806
1	33.005162	-80.325691
2	33.005359	-80.325963
3	33.005407	-80.325957
4	33.005829	-80.325537
5	33.00645	-80.326474
6	33.005798	-80.327082
7	33.005956	-80.327323
8	33.006112	-80.327565
9	33.006875	-80.328754
10	33.009221	-80.327121
11	33.011163	-80.32577
12	33.011678	-80.322963
13	33.012429	-80.320398
14	33.009407	-80.317325
15	33.009787	-80.317312
16	33.009825	-80.317311
17	33.009821	-80.317249
18	33.009883	-80.31719
19	33.009863	-80.317147
20	33.009816	-80.317084
21	33.009793	-80.317088
22	33.009737	-80.317161
23	33.009665	-80.317196
24	33.009601	-80.317117
25	33.009594	-80.317058
26	33.009604	-80.316971
27	33.009596	-80.316921
28	33.009578	-80.31688
29	33.009523	-80.316866
30	33.009499	-80.316805
31	33.009502	-80.31674
32	33.009558	-80.316614
33	33.009504	-80.316537
34	33.009455	-80.31648
35	33.009464	-80.31639
36	33.009664	-80.31617
37	33.009681	-80.316096

FID	Latitude	Longitude
38	33.009657	-80.316051
39	33.009483	-80.315973
40	33.009459	-80.315896
41	33.009505	-80.315694
42	33.009607	-80.31561
43	33.009754	-80.315558
44	33.009793	-80.315528
45	33.009844	-80.315399
46	33.009899	-80.315305
47	33.009953	-80.31531
48	33.010038	-80.315334
49	33.01011	-80.315323
50	33.010145	-80.315194
51	33.008685	-80.314186
52	33.007439	-80.311434
53	33.007573	-80.31047
54	33.007653	-80.309476
55	33.007707	-80.308541
56	33.007721	-80.307874
57	33.007607	-80.306442
58	33.007663	-80.305905
59	33.007662	-80.305616
60	33.007597	-80.304906
61	33.005746	-80.305702
62	33.006219	-80.304127
63	33.005937	-80.303826
64	33.005696	-80.303769
65	33.00562	-80.303751
66	33.004977	-80.303597
67	33.00317	-80.30239
68	33.003122	-80.302357
69	33.003018	-80.302288
70	32.999498	-80.30084
71	32.999336	-80.300773
72	32.997754	-80.300122
73	32.996401	-80.297729
74	32.996359	-80.297336
75	32.993104	-80.297428
76	32.993036	-80.297806
77	32.991865	-80.304319
78	32.991327	-80.30751

FID	Latitude	Longitude
79	32.991237	-80.308052
80	32.991439	-80.308183
81	32.991638	-80.308321
82	32.991833	-80.308466
83	32.992024	-80.308617
84	32.992093	-80.308673
85	32.992239	-80.308796
86	32.992384	-80.308924
87	32.992526	-80.309055
88	32.992665	-80.30919
89	32.992823	-80.309352
90	32.992978	-80.309519
91	32.993129	-80.309691
92	32.993275	-80.309868
93	32.993418	-80.310049
94	32.993557	-80.310235
95	32.993691	-80.310426
96	32.994814	-80.312044
97	32.99491	-80.312182
98	32.996582	-80.314597
99	32.997639	-80.316123
100	33.000121	-80.319709
101	33.000383	-80.320082
102	33.000649	-80.320451
103	33.00092	-80.320814
104	33.001195	-80.321174
105	33.001475	-80.321528
106	33.001759	-80.321878
107	33.003607	-80.324121
108	33.003719	-80.324257
109	33.003912	-80.324496
110	33.004105	-80.324739
111	33.004297	-80.324985
112	33.004912	-80.325806
113	33.003221	-80.295437
114	33.001491	-80.295337
115	33.00031	-80.293593
116	33.000001	-80.293157
117	32.999294	-80.292182
118	32.997021	-80.292323

FID	Latitude	Longitude
119	32.996531	-80.292864
120	32.995021	-80.294427
121	32.994851	-80.294632
122	32.994026	-80.29552
123	32.992857	-80.296753
124	32.993104	-80.297428
125	32.996359	-80.297336
126	32.996401	-80.297729
127	32.997754	-80.300122
128	32.999336	-80.300773
129	32.999498	-80.30084
130	33.003018	-80.302288
131	33.003132	-80.298044
132	33.003147	-80.297602
133	33.003221	-80.295437
134	32.984547	-80.316795
135	32.985321	-80.317045
136	32.986823	-80.317532
137	32.987499	-80.317629
138	32.985407	-80.325026
139	32.992213	-80.325612
140	32.995548	-80.325792
141	32.995931	-80.325813
142	32.997064	-80.325874
143	33.00001	-80.326037
144	33.000575	-80.326068
145	33.000823	-80.325518
146	33.001514	-80.323986
147	33.00239	-80.322992
148	33.002197	-80.322759
149	33.001495	-80.323556
150	33.000717	-80.32284
151	33.000418	-80.322538
152	32.998854	-80.321559
153	32.998601	-80.3214
154	32.997422	-80.320663
155	32.996267	-80.319962
156	32.996418	-80.319186
157	32.995578	-80.317555
158	32.996914	-80.315462
159	32.993535	-80.310587

FID	Latitude	Longitude
160	32.993392	-80.310384
161	32.993244	-80.310186
162	32.993091	-80.309994
163	32.992934	-80.309807
164	32.992771	-80.309625
165	32.992604	-80.30945
166	32.992433	-80.309281
167	32.992385	-80.309234
168	32.992253	-80.309113
169	32.992161	-80.309032
170	32.991974	-80.308873
171	32.991853	-80.308774
172	32.991731	-80.308678
173	32.991719	-80.308699
174	32.991552	-80.308574
175	32.991381	-80.308454
176	32.991208	-80.308339
177	32.991033	-80.30823
178	32.990855	-80.308126
179	32.990506	-80.309383
180	32.98918	-80.308865
181	32.988396	-80.308558
182	32.98877	-80.307211
183	32.988509	-80.307109
184	32.988273	-80.307618
185	32.988175	-80.307923
186	32.987668	-80.307955
187	32.987504	-80.308148
188	32.987294	-80.308046
189	32.987019	-80.307916
190	32.986761	-80.307806
191	32.986465	-80.307683
192	32.986139	-80.308276
193	32.985458	-80.309407
194	32.984866	-80.310493
195	32.984485	-80.310994
196	32.984523	-80.311406
197	32.98467	-80.313006
198	32.984837	-80.313371
199	32.985054	-80.314571

FID	Latitude	Longitude
200	32.984992	-80.314972
201	32.984871	-80.315758
202	32.984547	-80.316795