



# SOUTH PARK GROUP

[www.southparkgroup.com](http://www.southparkgroup.com)



## FOR LEASE

### SECOND FLOOR OFFICES

7164 Melrose Avenue

Los Angeles, California 90046

Prime Melrose location with full city views and surrounded by some of the city's most iconic dining and entertainment spots. The spaces include second floor offices with shared amenities.

**MEGAN NASIR**

Tel. 323.782.1264

E. [megan@southparkgroup.com](mailto:megan@southparkgroup.com)

No. 02179218

#### AVAILABLE SPACE

**Suite 205:** Approx. 327 rentable sqft

**Suite 206:** Approx. 408 rentable sqft

**Rate:** \$3.50 per sqft, Modified Gross

SOUTH PARK GROUP | 8322 Beverly Blvd., Suite 301 | Los Angeles, CA 90048

This information has been furnished by sources that we deem reliable, but for which we assume no liability. The information contained herein is given, in confidence, with the understanding that all negotiations pertaining to this property be handled through the submitting office. All measurements are approximate.

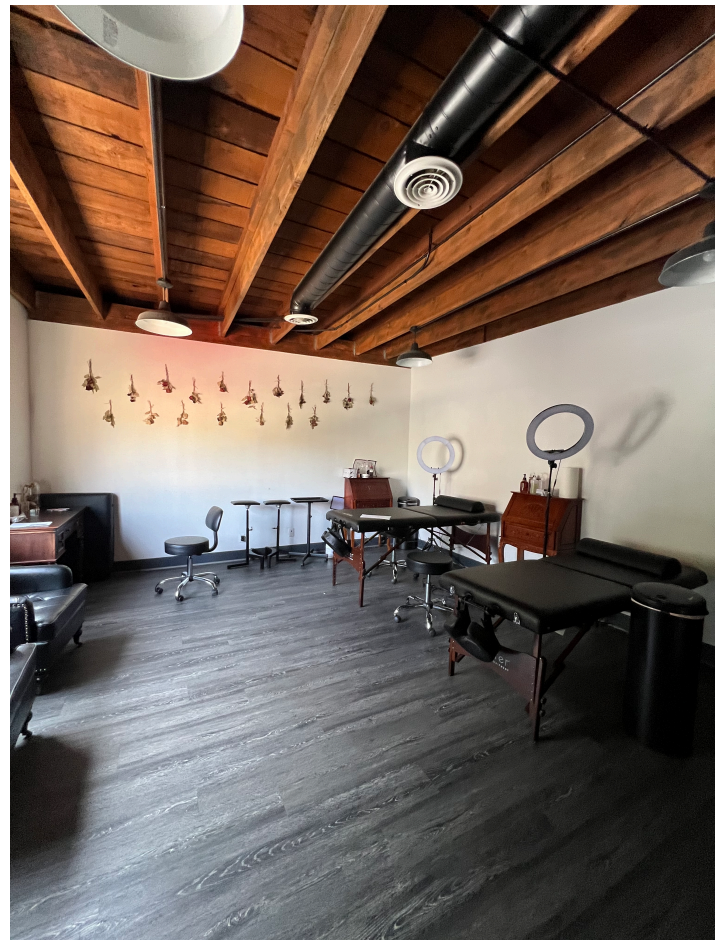


# SOUTH PARK GROUP

[www.southparkgroup.com](http://www.southparkgroup.com)

## INTERIOR

7164 Melrose Avenue, Suite 205, Los Angeles, California 90046



**SOUTH PARK GROUP | 8322 Beverly Blvd., Suite 301 | Los Angeles, CA 90048**

This information has been furnished by sources that we deem reliable, but for which we assume no liability. The information contained herein is given, in confidence, with the understanding that all negotiations pertaining to this property be handled through the submitting office. All measurements are approximate.





# SOUTH PARK GROUP

[www.southparkgroup.com](http://www.southparkgroup.com)

## INTERIOR

7164 Melrose Avenue, Suite 206, Los Angeles, California 90046



**SOUTH PARK GROUP | 8322 Beverly Blvd., Suite 301 | Los Angeles, CA 90048**

This information has been furnished by sources that we deem reliable, but for which we assume no liability. The information contained herein is given, in confidence, with the understanding that all negotiations pertaining to this property be handled through the submitting office. All measurements are approximate.