

Valhalla Industrial Complex **AVAILABLE UNITS**

520 - 8,235 ± SF

Scott Mason
President
415.215.1937
scott@calcosf.com
LIC# 01036610



CALCO
COMMERCIAL, INC.

Valhalla Industrial Complex
35 DORMAN AVENUE, UNIT 4
520 ± SF



Property Details

- 520 ± SF office space on 2nd floor
- Great natural light
- Available now
- \$1.50 SF, IG / month

Valhalla Industrial Complex
55 APPAREL WAY
2,800 ± SF

Scott Mason
President
415.215.1937
scott@calcosf.com
LIC# 01036610

Property Details

- 2,800 ± SF of clear span warehouse
- Small office
- Sprinklered
- One (1) roll-up door
- Available now
- \$1.80 PSF, IG / month

Valhalla Industrial Complex
2275 PALOU AVE
3,300 ± SF

Scott Mason
President
415.215.1937
scott@calcosf.com
LIC# 01036610

Property Details

- 3,300 ± SF
- 800 SF office
- 2500 SF warehouse
- 16' ceiling height
- 200 AMP, 3 phase
- Sprinklered
- Available now
- \$1.75 PSF, IG / month

Valhalla Industrial Complex
39 DORMAN AVE
5,000 ± SF

WAREHOUSE INTERIOR

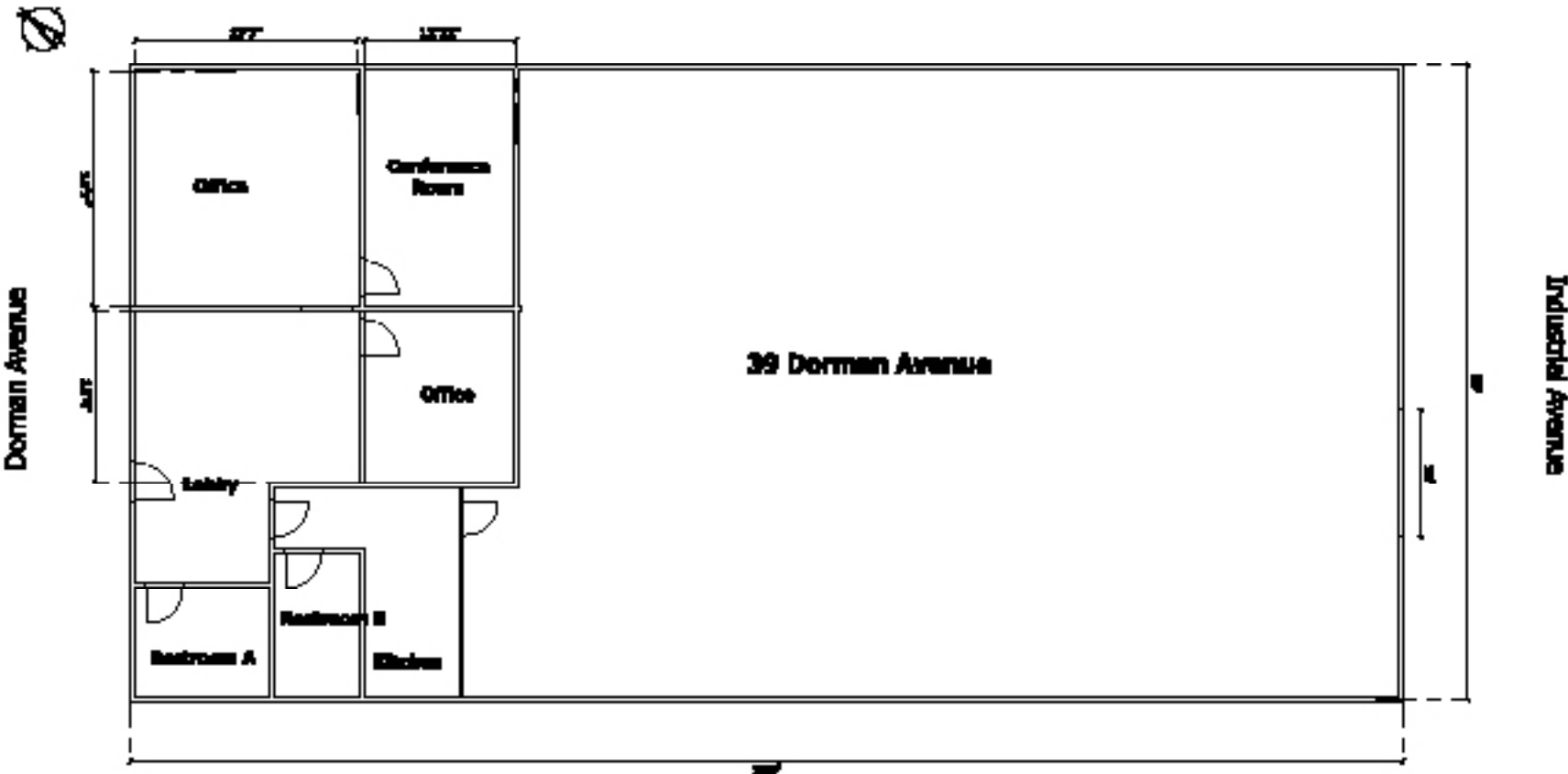


Property Details

- 3,600 ± SF of clear span warehouse
- 1,400 ± SF of newly renovated office space
- 16' ceiling height
- 1 large drive-in loading door
- 200 AMP, 3 phase
- Sprinklered
- Available now
- \$1.85 PSF, IG / month



39 DORMAN AVE | FLOORPLAN



Valhalla Industrial Complex
2235 PALOU AVE
5,832 ± SF

Scott Mason
President
415.215.1937
scott@calcosf.com
LIC# 01036610

Property Details

- 4,232 ± SF of clearspan warehouse
- 1,600 ± SF of office space
- 16' ceiling height
- 1 large electrified roll-up door
- Available December 1, 2025
- \$1.75 PSF, IG / month

Valhalla Industrial Complex
495 BARNEVELD AVE
8,235 ± SF



WAREHOUSE INTERIOR

Property Details

- 6,080 ± SF of clear span warehouse
- 2,155 ± SF of office space
- Office space features three (3) private offices, one (1) conference room, open work areas, and a kitchenette
- 600 Amp
- Available now
- \$1.80 PSF, IG / month



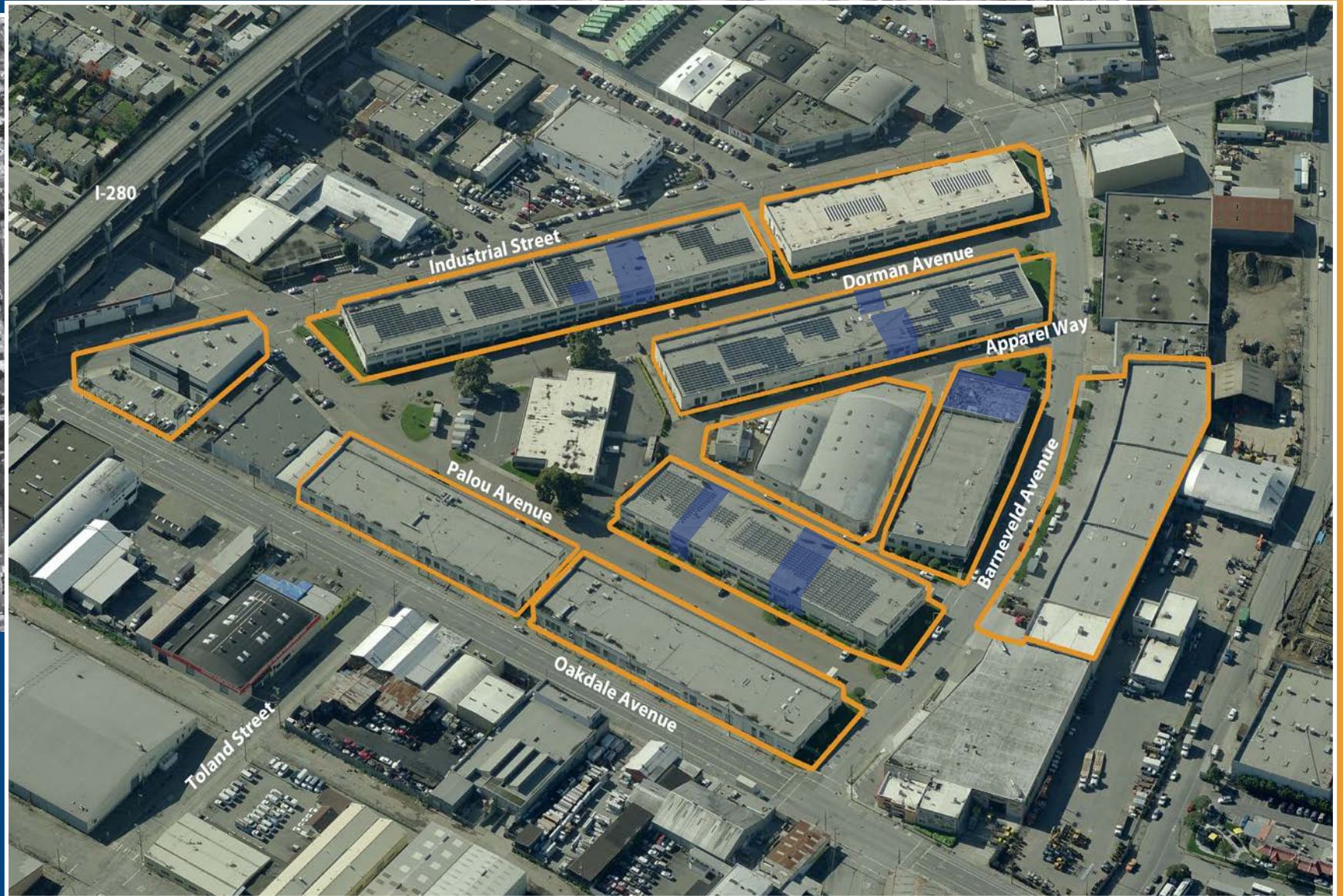
Scott Mason
President
415.215.1937
scott@calcosf.com
LIC# 01036610

Liv Mason
Associate
650.787.2364
Liv@calcosf.com
LIC# 02245475

Valhalla Industrial Complex **AVAILABLE UNITS**

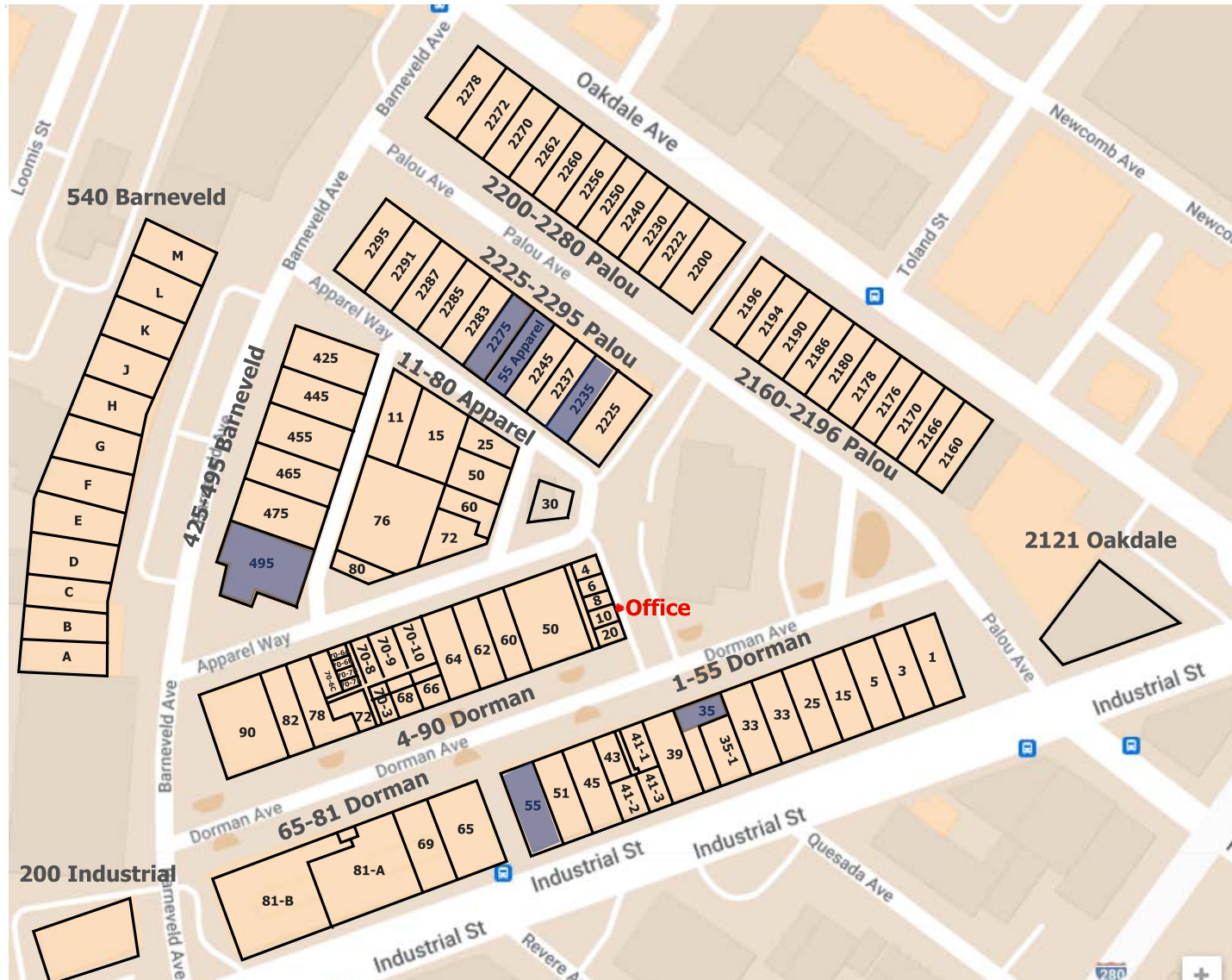
520 - 8,235 ± SF

Scott Mason
President
415.215.1937
scott@calcosf.com
LIC# 01036610



VALHALLA INDUSTRIAL COMPLEX

Buildings and Unit Numbers



Valhalla Industrial Complex

VALHALLA INDUSTRIAL COMPLEX

The #1 Industrial Park in San Francisco

1. All concrete, open span, and functionally designed for light industrial and office uses.
2. Ideally situated near the Bayshore industrial corridor. Valhalla Real Estate Industrial Complex encompasses several city blocks bounded by Oakdale, Industrial, and Barneveld Streets. Located within two (2) blocks are both entrances and exits to the 101 and 280 Freeways. Additionally, three (3) separate public bus routes service the Park.
3. Excellent security provided on-site with nightly private patrol.
4. The Park is professionally managed to ensure regular maintenance and repairs, landscaped grounds, and swept-clean walkways and parking areas.
5. The Park is situated within two blocks of more than a dozen restaurants and general business services.