

BAYPOINT

COMMERCE CENTER

ST PETERSBURG, FL 33702

Office Space Available For Lease



15-building campus with over 700,000 RSF of total office space



Recently renovated common areas



Building lighting & monument signage



Multiple conference rooms available

Baypoint Commerce Center is 15-buildings in a beautiful 76 acre campus-style environment with over 700,000 RSF of office space.

Key Property Highlights

- + Campus has undergone an extensive multi-million dollar renovation and modernization project
- + Close to restaurants and shopping and equidistance to each of Tampa Bay's CBDs - Tampa, St. Petersburg & Clearwater
- + On-site property management and leasing
- + Excellent access and ample parking available (5/1,000 SF)
- + Over 10,000 SF of fully furnished conference rooms are available throughout the park

Video

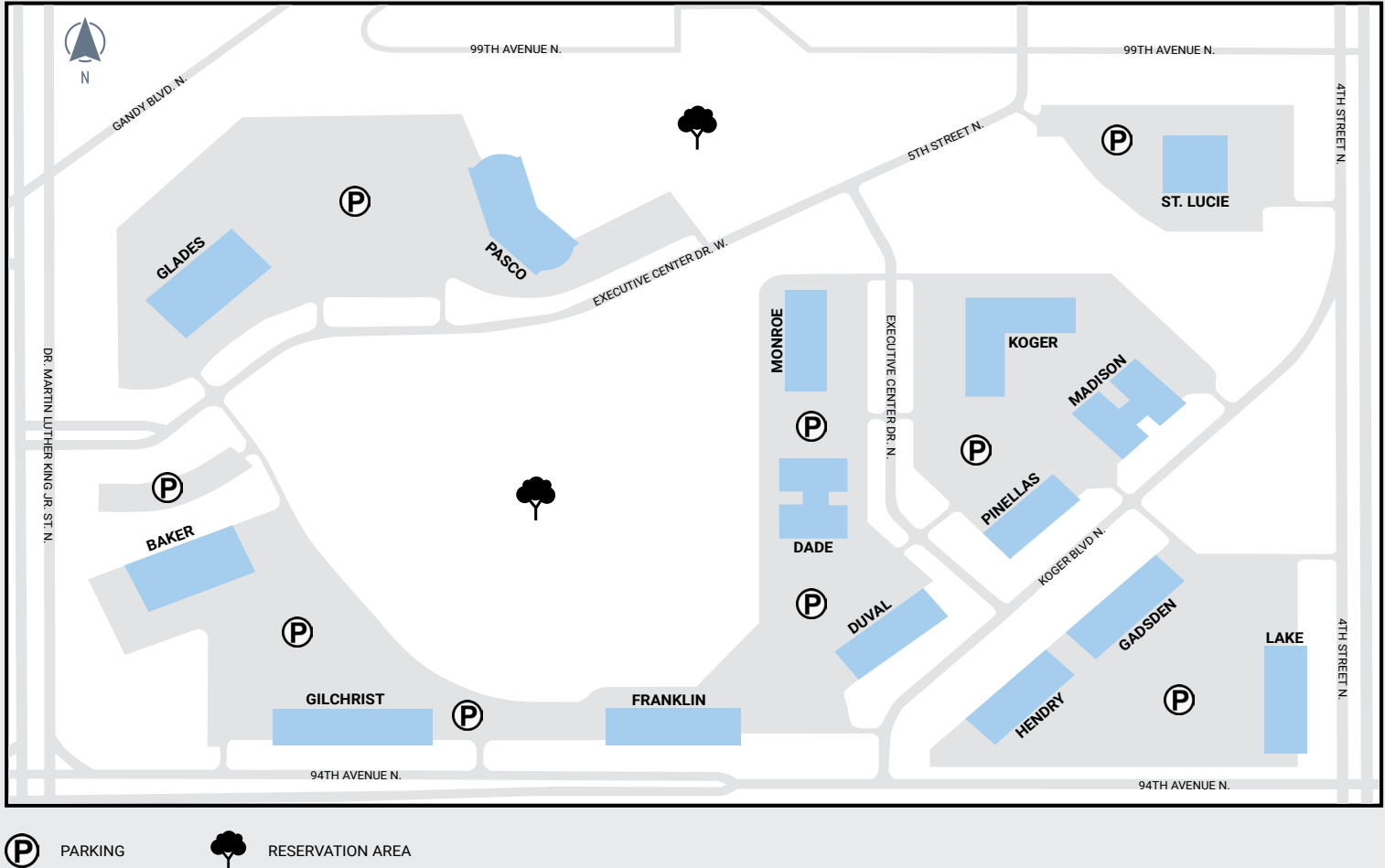


Feil

THE FEIL ORGANIZATION

CBRE

Baypoint Commerce Center Overview



Located at the Gandy Blvd, 9th St, 4th St & 94th Ave interchange, right at center of Pinellas County's most important connectivity to the surrounding Tampa & St. Petersburg areas.

- » The Property is located directly off Gandy Boulevard in the Gateway Submarket.
- » Minutes away from Tampa's bay-crossing thoroughfares
 - the Gandy Bridge, Courtney Campbell Cswy. & I-275 (Howard Frankland Brdg.)
- » Access to nearly 2.9 million people with a 45-minute commute.
- » Equidistant to each of Tampa Bay's CBDs – Tampa, St. Petersburg and Clearwater.
- » Proximately to key retail corridors along Ulmerton Rd, Roosevelt Blvd, 9th St N and 4th St N.
- » The Gateway submarket features approximately 6,651 businesses with an employment base of 89,993 people.
- » The submarket's accessibility to the region's expanding transportation infrastructure makes for an ideal location for businesses to attract skilled labor.

2.9 MILLION PEOPLE LIVE WITHIN A 45 MINUTE COMMUTE OF THE PROPERTY

- 377,243 people live within a 15 minute drive
- 1,590,049 people live within a 30 minute drive
- 2,969,157 people live within a 45 minute drive

NEARBY AMENITIES WITHIN A TWO MILES

- 66 Apartment complexes
- ±11,120 Rental units
- Numerous shopping centers and restaurants within two miles of the Property



BAKER
888 EXECUTIVE CTR DR

TOTAL RSF - 71,103 RSF

Available RSF 49,577 RSF



FRANKLIN
7010 94TH AVE N

TOTAL RSF - 36,687 RSF

Available RSF 11,777 RSF



GILCHRIST
801 94TH AVE N

TOTAL RSF - 48,544 RSF

Available RSF 48,545 RSF



LAKE
9400 4TH ST N

TOTAL RSF - 34,698 RSF

Available RSF 10,226 RSF



PASCO
808 EXECUTIVE CTR DR

TOTAL RSF - 83,373 RSF

Available RSF 19,914 RSF



DADE
9720 EXECUTIVE CTR DR

TOTAL RSF - 36,558 RSF

Available RSF 14,204 RSF



GADSDEN
9549 KOGER BLVD N

TOTAL RSF - 36,929 RSF

Available RSF 9,675 RSF



HENDRY
9455 KOGER BLVD N

TOTAL RSF - 32,861 RSF

Fully Leased



MADISON
9600 KOGER BLVD N

TOTAL RSF - 39,325 RSF

Available RSF 1,324 RSF



PINELLAS
9500 KOGER BLVD N

TOTAL RSF - 23,295 RSF

Available RSF 4,313 RSF



DUVAL
9450 KOGER BLVD N

TOTAL RSF - 30,426 RSF

Fully Leased



GLADES
877 EXECUTIVE CTR DR

TOTAL RSF - 74,199 RSF

Available RSF 7,599 RSF



KOGER
9721 EXECUTIVE CTR DR

TOTAL RSF - 48,946 RSF

Available RSF 3,789 RSF



MONROE
9720 EXECUTIVE CTR DR

TOTAL RSF - 29,704 RSF

Available RSF 22,268 RSF



ST LUCIE
9800 4TH ST N

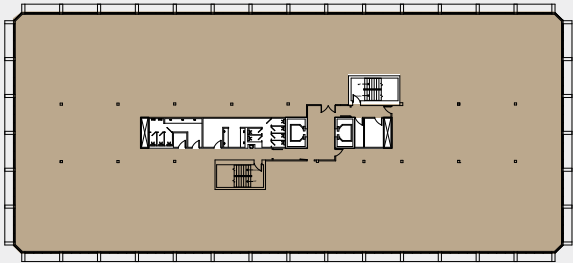
TOTAL RSF - 55,428 RSF

Available RSF 19,439 RSF

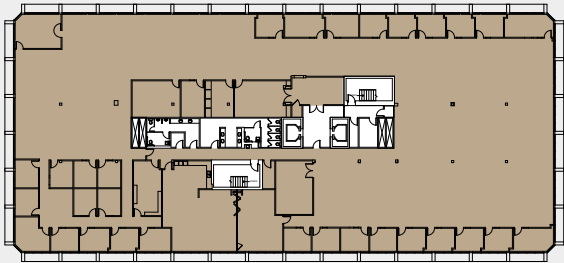
Baypoint Commerce Center Availabilities

BAKER - 888 EXECUTIVE CTR DR

SUITE 200
24,835 RSF

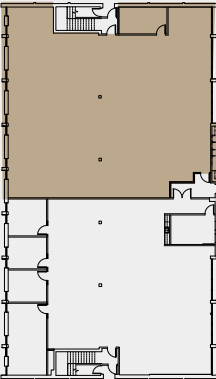


SUITE 300 - 24,742 RSF (PLUG & PLAY)

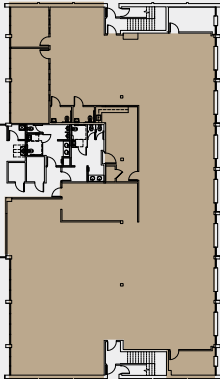


DADE - 9620 EXECUTIVE CTR DR

SUITE 110 - 5,493 RSF

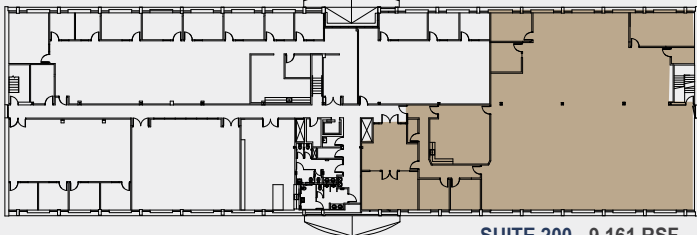
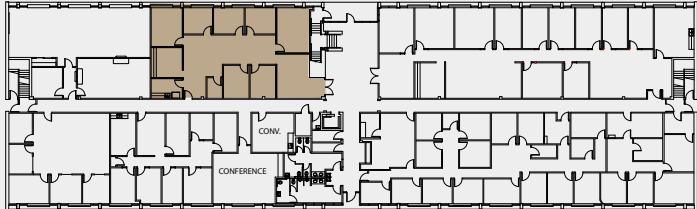


SUITE 150 - 8,711 RSF



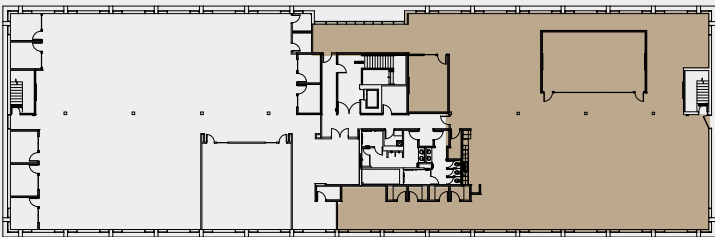
FRANKLIN - 701 94TH AVE N

SUITE 120 - 2,616 RSF



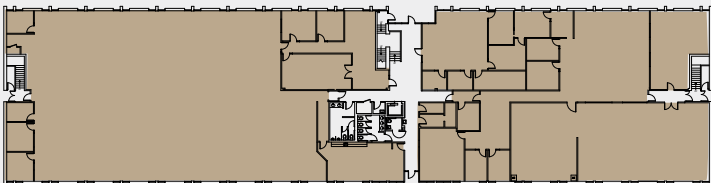
GADSDEN - 9549 KOGER BLVD N

SUITE 210 - 9,675 RSF



GILCHRIST - 801 94TH AVE N

SUITE 100 - 24,301 RSF



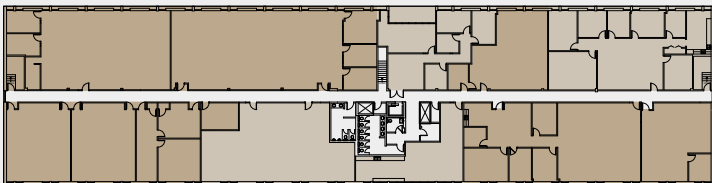
*UP TO 24,243 RSF CONTIGUOUS

SUITE 203 - 1,540 RSF

SUITE 204 - 1,367 RSF

SUITE 200 - 10,518 RSF

SUITE 202 - 2,863 RSF

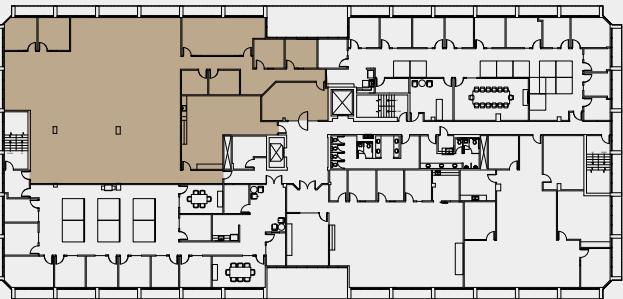


SUITE 200

SUITE 205 - 3,404 RSF

SUITE 201 - 4,552 RSF

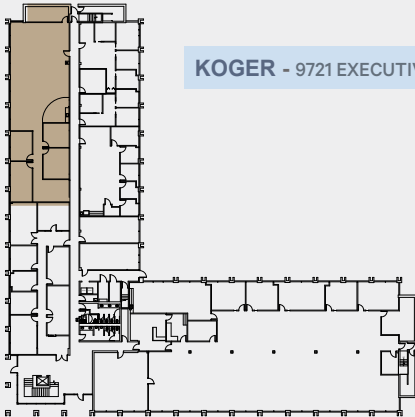
GLADES - 877 EXECUTIVE CTR DR



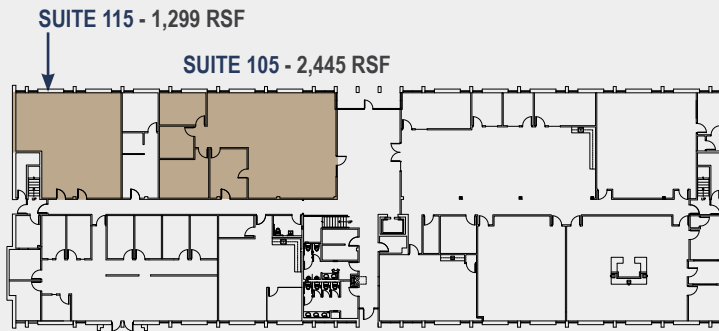
SUITE 250 - 7,599 RSF

KOGER - 9721 EXECUTIVE CTR DR

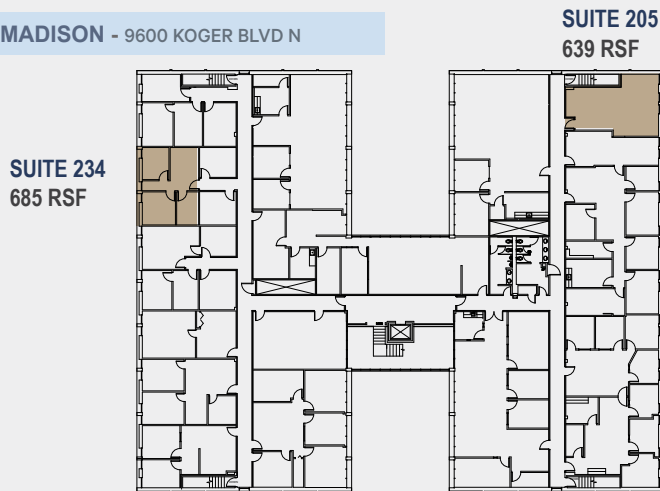
SUITE 130 -
3,789 SF



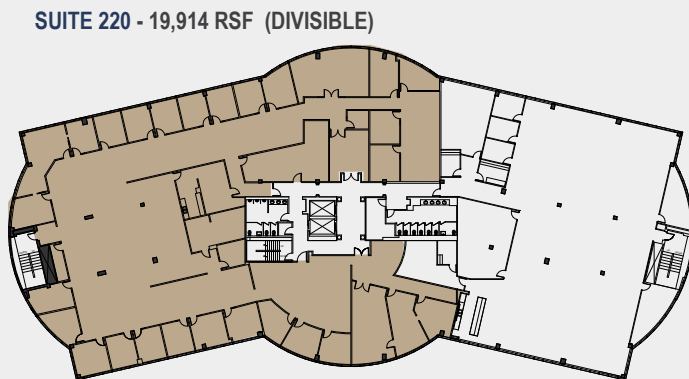
LAKE - 9400 4TH ST N



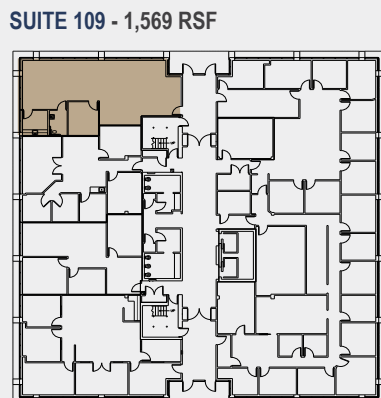
MADISON - 9600 KOGER BLVD N



PASCO - 805 EXECUTIVE CTR DR



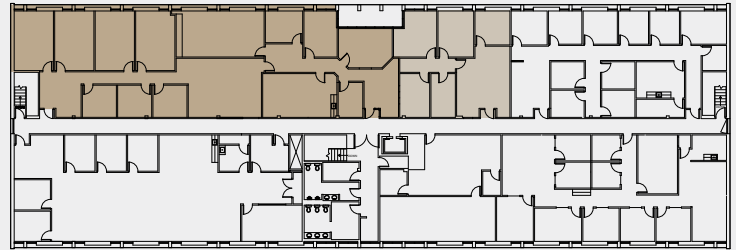
ST LUCIE - 9800 4TH ST N



**UP TO 6,482 RSF CONTIGUOUS*

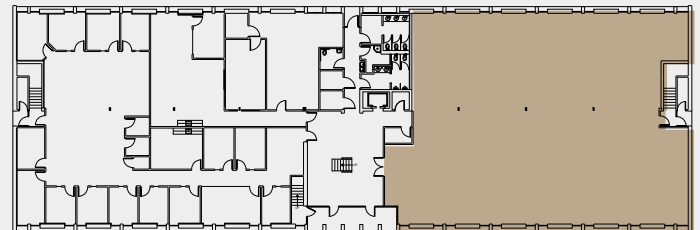
SUITE 210 - 4,945 RSF

SUITE 205 - 1,537 RSF

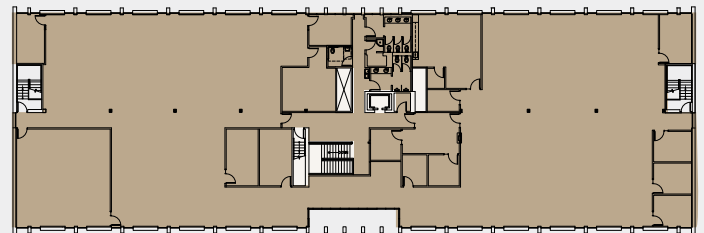


MONROE - 9720 EXECUTIVE CTR DR

SUITE 150 - 7,181 RSF



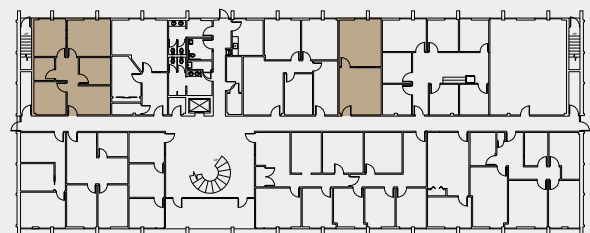
SUITE 200 - 15,087 RSF



PINELLAS - 9500 KOGER BLVD N

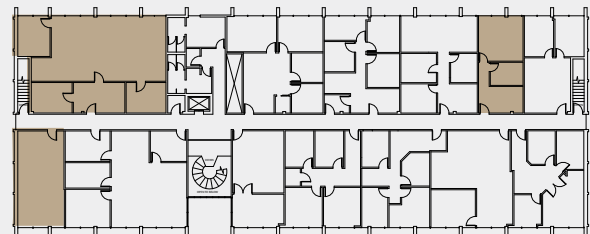
SUITE 107 - 947 RSF

SUITE 101 - 531 RSF



SUITE 203
1,711 RSF

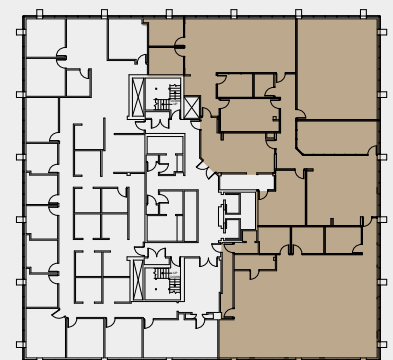
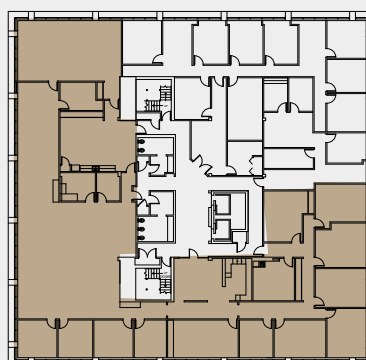
SUITE 222
558 RSF



SUITE 204
566 RSF

SUITE 300 - 9,700 RSF

(PLUG & PLAY) SUITE 402 - 8,170 RSF



Baypoint Commerce Center Conference Rooms

Conference Rooms are available for tenants' use at no charge, and may be reserved through our online work order system, MRI Angus.



FRANKLIN CONFERENCE ROOM

701 94TH AVE N

The Franklin Conference Room is located on the 1st floor in the east wing. It contains a conference table with 12 chairs. There is a counter along one wall and a wall-mounted whiteboard.



KOGER CONFERENCE ROOM

9721 EXECUTIVE CENTER DR N

The Koger Conference Room is located on the 1st floor in the east wing. It contains a conference table with 12 chairs.



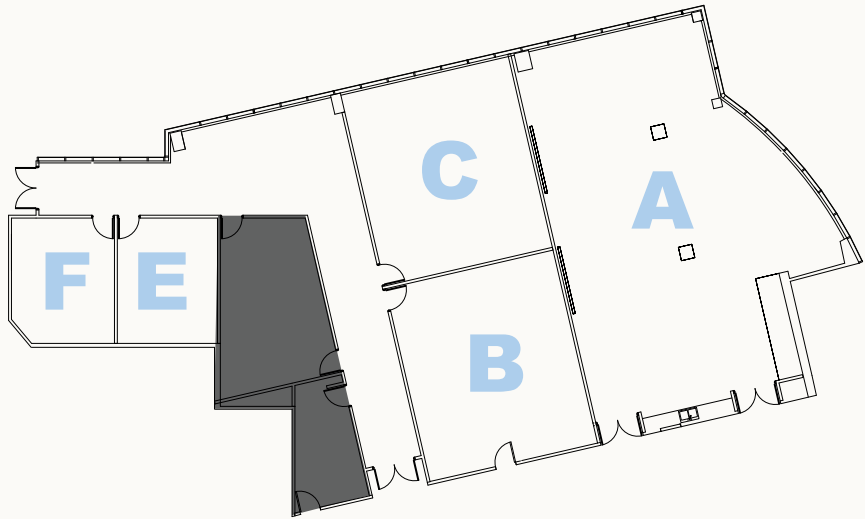
MADISON CONFERENCE ROOM

9600 KOGER BLVD

The Koger Conference Room is located on the 2nd floor just left from the stairs or elevator. It is furnished with a conference table and 16 chairs.



PASCO CONFERENCE CENTER
805 EXECUTIVE CENTER DR W



The Pasco Conference Center is located on the 1st floor on the left side of the south corridor. The Center includes five rooms available for use. SEE BELOW

PASCO CONFERENCE ROOM - A

Located on the 1st floor at the end of the south corridor. It is furnished with 146 chairs in a seminar-style setup, with a counter with a sink along one wall.



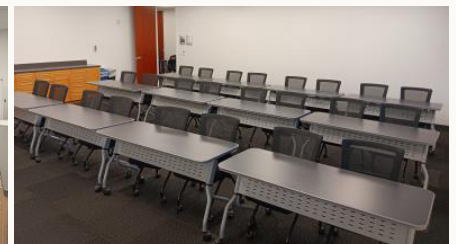
PASCO CONFERENCE ROOM - B



Located on the 1st floor inside the Conference Center corridor. It is furnished classroom-style with 12 tables and 24 chairs.

PASCO CONFERENCE ROOM - C

Located on the 1st floor inside the Conference Center corridor. It is furnished 13 classroom tables and 24 chairs with a counter along one wall.



PASCO CONFERENCE ROOM - E & F



Located on the 1st floor inside the Conference Center corridor. These rooms are each furnished with a conference table and 8 chairs, as well as a wall-mounted whiteboard.

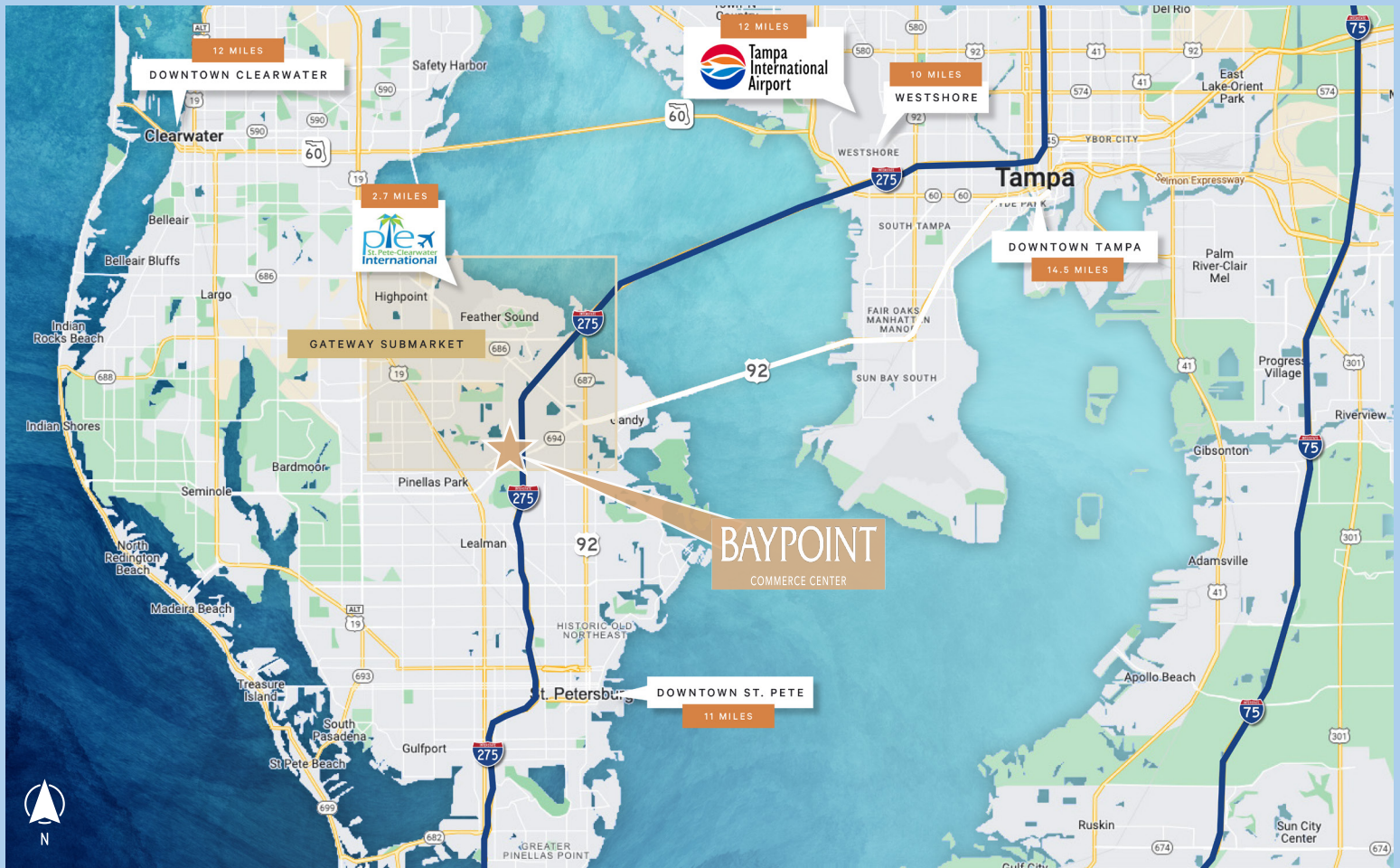


BAYPOINT

COMMERCE CENTER
ST PETERSBURG, FL 33702

Office Space Available For Lease

Video



TRANSPORTATION

Interstate 275, Howard Frankland Bridge, Selmon Exwy, Gandy Blvd, Courtney Campbell Bridge, 4th St, 9th St, 94th Ave & Roosevelt Blvd

RESTAURANTS

Noble Crust of St. Petersburg, Miller's Ale House, Mori Sushi, Starbucks

FITNESS / GYMS

Mayweather Boxing + Fitness Studio, Anytime Fitness, Elevate St. Pete, Epic Heath and Fitness

RETAIL

Publix at Gateway Crossing, TJ Maxx, Tuesday Morning, CVS Pharmacy, Target, PetSmart

DESTINATIONS

St. Pete - Clearwater Int'l Airport, Tampa Int'l Airport, St. Pete Pier, Tropicana Field, Sunken Gardens

HOTELS

Comfort Inn & Suites Northeast - Gateway, Hilton St. Petersburg Carillon Park, St. Petersburg Marriott Clearwater, The Karol Hotel, St. Petersburg Clearwater

CONTACTS

Barry Hanerfeld
Senior Vice President
+1 813 334 7561
barry.hanerfeld@cbre.com

Molly Molloy Catlett
Vice President
+1 813 273 8465
mollymolloy.catlett@cbre.com



Website

Feil

THE FEIL ORGANIZATION

CBRE, Inc. | Licensed Real Estate Broker

CBRE

© 2026 CBRE, Inc. All rights reserved. This information has been obtained from sources believed reliable but has not been verified for accuracy or completeness. CBRE, Inc. makes no guarantee, representation or warranty and accepts no responsibility or liability as to the accuracy, completeness, or reliability of the information contained herein. You should conduct a careful, independent investigation of the property and verify all information. Any reliance on this information is solely at your own risk. CBRE and the CBRE logo are service marks of CBRE, Inc. All other marks displayed on this document are the property of their respective owners, and the use of such marks does not imply any affiliation with or endorsement of CBRE. Photos herein are the property of their respective owners. Use of these images without the express written consent of the owner is prohibited.