



LARGE OFFICE RENDERING

7 Century Drive

PARSIPPANY, NJ

**OFFICE SPACE AVAILABLE
FOR LEASE**

For information, please contact:

Jamie Drummond

t 201-460-5153

jdrummond@ngkf.com

Andrew Perrotti

t 201-460-5158

andrew.perrotti@ngkf.com

NEWMARK

201 Route 17 North, Rutherford, NJ 07070

One Tower Center Boulevard, Suite 2201, East Brunswick, NJ 08816

nmrk.com

The information contained herein has been obtained from sources deemed reliable but has not been verified and no guarantee, warranty or representation, either express or implied, is made with respect to such information. Terms of sale or lease and availability are subject to change or withdrawal without notice.



PARSIPPANY, NJ

7 Century Drive



SMALL OFFICE FURNITURE RENDERING



LARGE OFFICE RENDERING

OFFICE SPACE AVAILABLE FOR LEASE

Features

- Aggressive below-market deal terms being offered
- Shorter term leases will be considered
- Newly renovated prebuilt turn-key portion of 2,159 SF
- Remaining 9,179 SF portion has existing build-out
- Professional ownership and management

Specifications

- Size:** Partial 1st floor: 11,338 RSF (divisible)
- Rent:** \$12.50/SF + TE
- Occupancy:** Available immediately

For information, please contact:

Jamie Drummond

t 201-460-5153
jdrummond@ngkf.com

Andrew Perrotti

t 201-460-5158
andrew.perrotti@ngkf.com

NEWMARK

201 Route 17 North, Rutherford, NJ 07070
One Tower Center Boulevard, Suite 2201, East Brunswick, NJ 08816

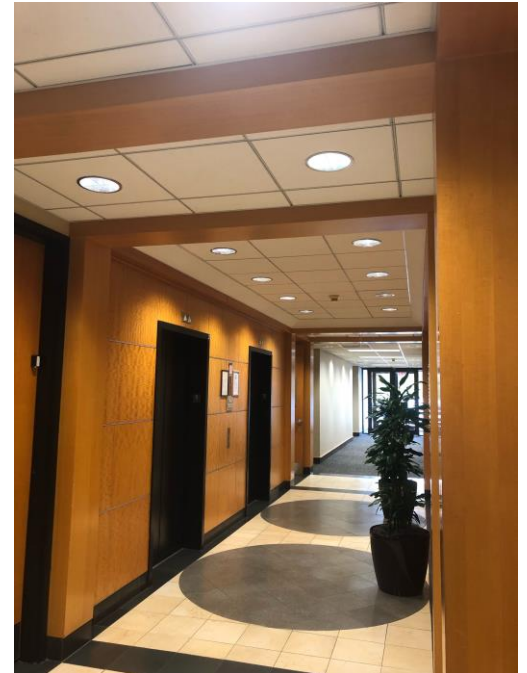
nmrk.com

The information contained herein has been obtained from sources deemed reliable but has not been verified and no guarantee, warranty or representation, either express or implied, is made with respect to such information. Terms of sale or lease and availability are subject to change or withdrawal without notice.



ADDITIONAL PHOTOS

7 Century Drive



NEWMARK

201 Route 17 North, Rutherford, NJ 07070

One Tower Center Boulevard, Suite 2201, East Brunswick, NJ 08816

nmrk.com

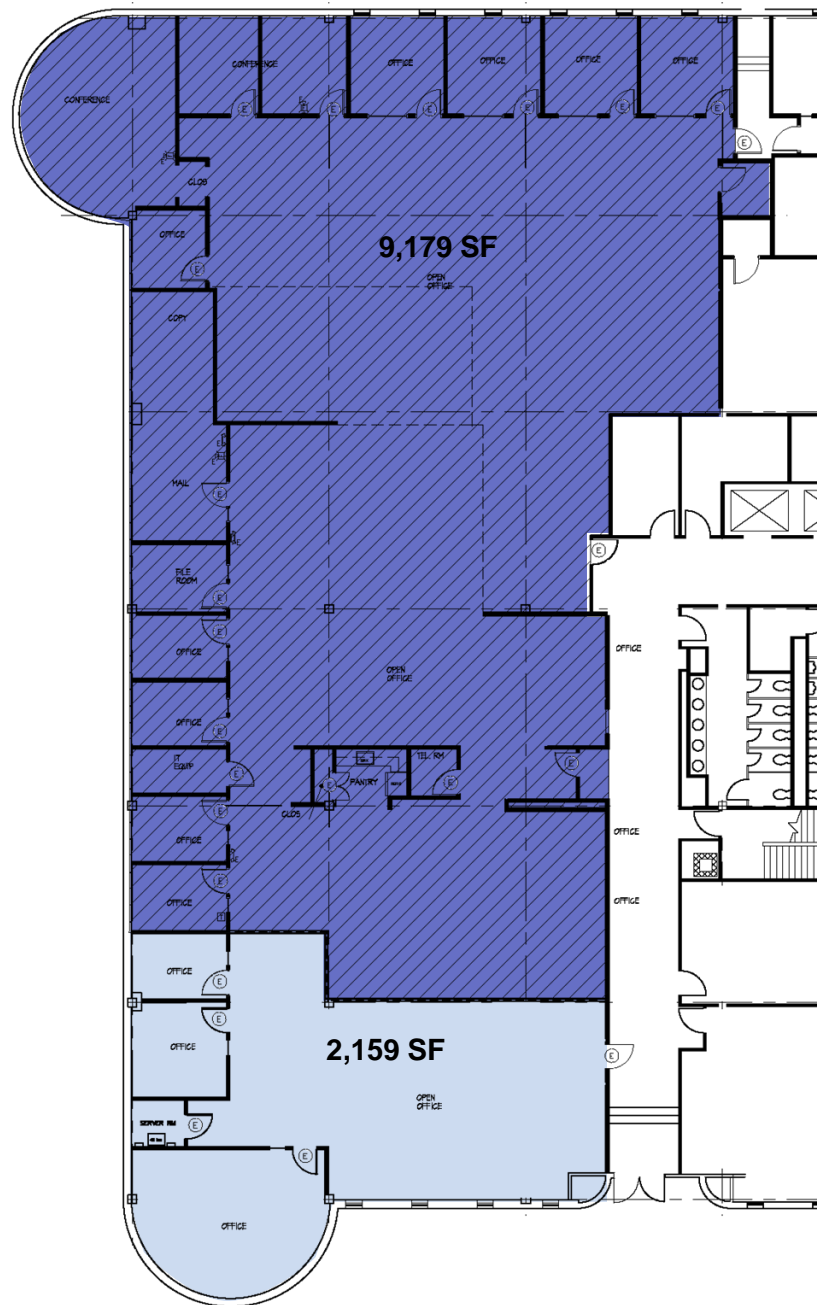
The information contained herein has been obtained from sources deemed reliable but has not been verified and no guarantee, warranty or representation, either express or implied, is made with respect to such information. Terms of sale or lease and availability are subject to change or withdrawal without notice.



FLOOR PLAN

7 Century Drive

1st Floor: 11,338 SF total



NEWMARK

201 Route 17 North, Rutherford, NJ 07070
One Tower Center Boulevard, Suite 2201, East Brunswick, NJ 08816

nmrk.com

The information contained herein has been obtained from sources deemed reliable but has not been verified and no guarantee, warranty or representation, either express or implied, is made with respect to such information. Terms of sale or lease and availability are subject to change or withdrawal without notice.