



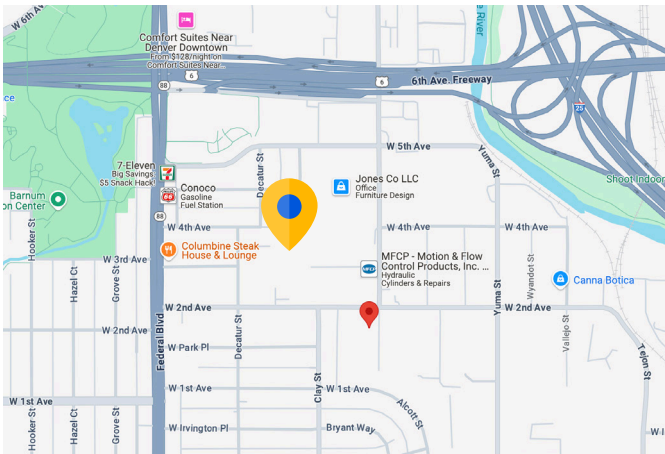
DOUGLAS WAREHOUSES
 2600 & 2620 W 2ND AVE
 467-0901

1. DENVER'S	DANGEROUS THEATRE
2. CUSTOM	EMBROIDERY SERVICES
3. AJAX &	W. WHITE
5. TRVE BREW	ING
6. COMPANY	
7. DME GURU	
8. TRVE BREWING	Office
10. vlvint.SmartHome	

BRYANT ST. W. 2nd AVE.

Office Sublease

2600 W 2nd Avenue
Unit #7
Denver, CO 80219



Overview

Building	20,891 RBA
Premises	Unit #7 2,194 SF
Rate	Contact Broker
Lease Exp Date	June 30, 2027
Parking	First-come, first served basis

Space Specs

- Office buildout
- Two Offices
- Open Area
- Bathrooms
- Dock Door

For more information:

Justin Hubler
 303.588.4301
 jhubler@cresa.com



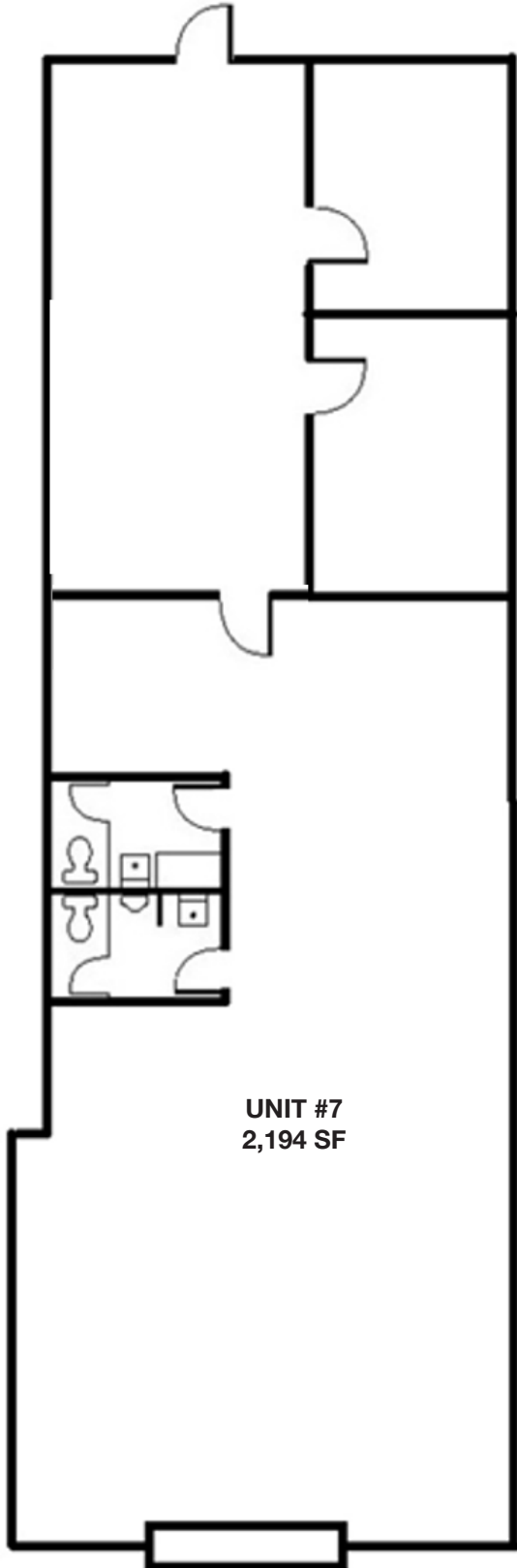
Sublease Available



2600 W 2nd Avenue

Unit #7

Denver, CO 80219



UNIT #7
2,194 SF

Dock

