

OFFICE BUILDING FOR LEASE

3365 St Augustine Road, Jacksonville, FL 32207



OFFERING SUMMARY

Lease Rate:	\$2,950.00 per month (Gross)
Building Size:	2,637 SF
Lot Size:	0.38 Acres
Year Built:	1955
Zoning:	CRO
Parking	6 Spaces
# of Rooms	9
# of Bathrooms	4

LOCATION OVERVIEW

3365 St Augustine Road is a superb office location situated within the vibrant San Marco Submarket. Nestled between Philips Highway and Hendricks Avenue, this area is a bustling commercial hub that provides easy access to various neighborhoods and businesses. The location's strategic placement ensures that your office space will be easily accessible to clients and employees. With a range of restaurants and local stores nearby, this location will meet all your business needs.



Joe Indriolo | joe@psrps.com | 904.398.1044

Wayne Brooke | wayne@psrps.com | 904.398.1044

Pine Street/RPS | 904.398.1044 | 2650-2 Rosselle Street, Jacksonville, FL 32204 | pinestreetrps.com

Information provided is deemed accurate, but subject to errors and/or omissions.



Pine Street / RPS

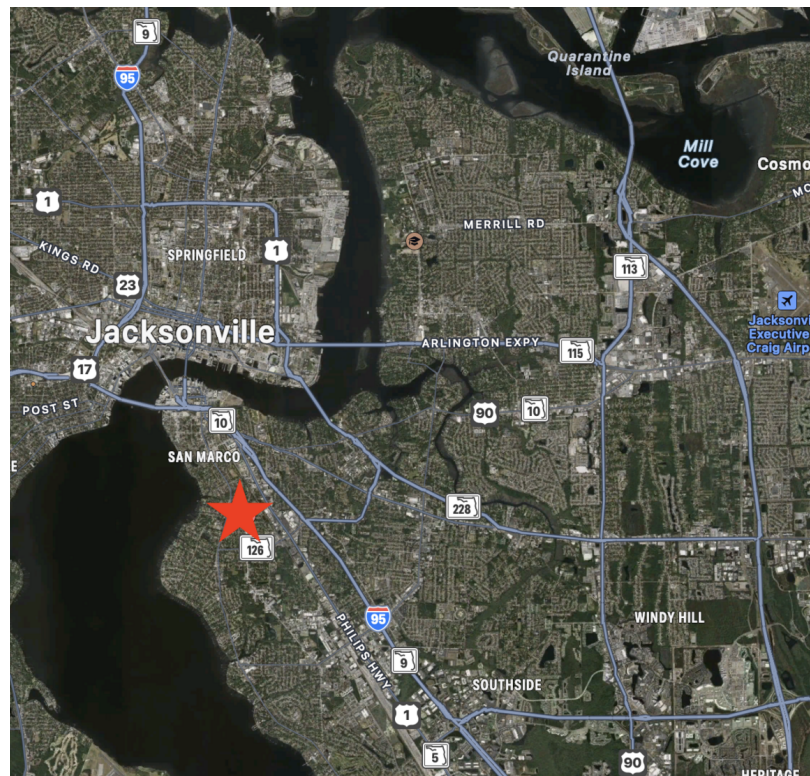
OFFICE BUILDING FOR LEASE

3365 St Augustine Road, Jacksonville, FL 32207



DEMOGRAPHICS:

	1 MILE	2 MILE	3 MILE
Total Households	3,994	13,629	29,553
Total Population	8,613	26,841	59,974
Persons Per Household	2.2	2	2
Average Age	37.8	38.2	39.3
Average Household income	\$64,189	\$67,467	\$70,651



Joe Indriolo | joe@psrps.com | 904.398.1044

Wayne Brooke | wayne@psrps.com | 904.398.1044

Pine Street/RPS | 904.398.1044 | 2650-2 Rosselle Street, Jacksonville, FL 32204 | pinestreetrps.com

Information provided is deemed accurate, but subject to errors and/or omissions.



Pine Street / RPS