

# 5900 CORE AVE

NORTH CHARLESTON, SC 29406



**FOR LEASE**

**Harbor**  
COMMERCIAL PARTNERS

**Contact:**

Jeremy Willits  
Senior Vice President  
+1.843.270.9205

[jeremy.willits@harborcommercialpartners.com](mailto:jeremy.willits@harborcommercialpartners.com)

# 5900 CORE AVE

NORTH CHARLESTON, SC 29406

## PROPERTY INFORMATION

TAX MAP ID	472-00-00-028
COUNTY	CHARLESTON
MUNICIPALITY	NORTH CHARLESTON
ZONING	GENERAL OFFICE
LOT SIZE	4.46 ACRES
BUILDING SIZE	67,835 SF
AVAILABLE SF	1,440 - 4,458 SF
PARKING	ON-SITE

## OFFERING

SUITE 100

SUITE 204

SUITE 502

SIZE	LEASE RATE	LEASE TYPE	AVAILABLE
4,458 SF	\$24 PSF	FULL SERVICE	30 DAYS
1,440 SF	\$23 PSF	FULL SERVICE	30 DAYS
1,564 SF	\$23 PSF	FULL SERVICE	12/1/24

## HIGHLIGHTS

Enjoy the prestige, comfort and convenience offered at 5900 Core Avenue. Office suites feature floor-to-ceiling windows with sunny, bright offices. The central location just north of the I-26/ I-526 interchange provides short drive-times to all areas of the Charleston market, saving you and your staff valuable time. The property has abundant on-site parking. 5900 Core Avenue offers your company a valued priced professional atmosphere. There is a special opportunity for a bank or financial services company to have a retail presence on the ground floor, which would include building naming rights, four drive-through lanes, and your company's name on the building.

The newly remodeled Lower Lounge offers building tenants a place to relax, make private phone calls or simply enjoy a quiet moment without having to leave the property. Contact the Leasing Agent for a personal tour.



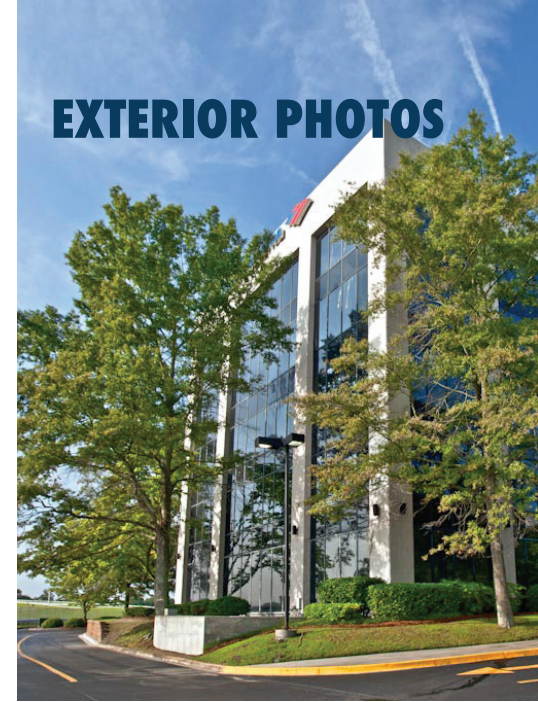
### Contact:

Jeremy Willits  
Senior Vice President  
+1.843.270.9205

[jeremy.willits@harborcommercialpartners.com](mailto:jeremy.willits@harborcommercialpartners.com)

# 5900 CORE AVE

NORTH CHARLESTON, SC 29406



## EXTERIOR PHOTOS



# 5900 CORE AVE

NORTH CHARLESTON, SC 29406



## ENTRANCE PHOTOS



# 5900 CORE AVE

NORTH CHARLESTON, SC 29406

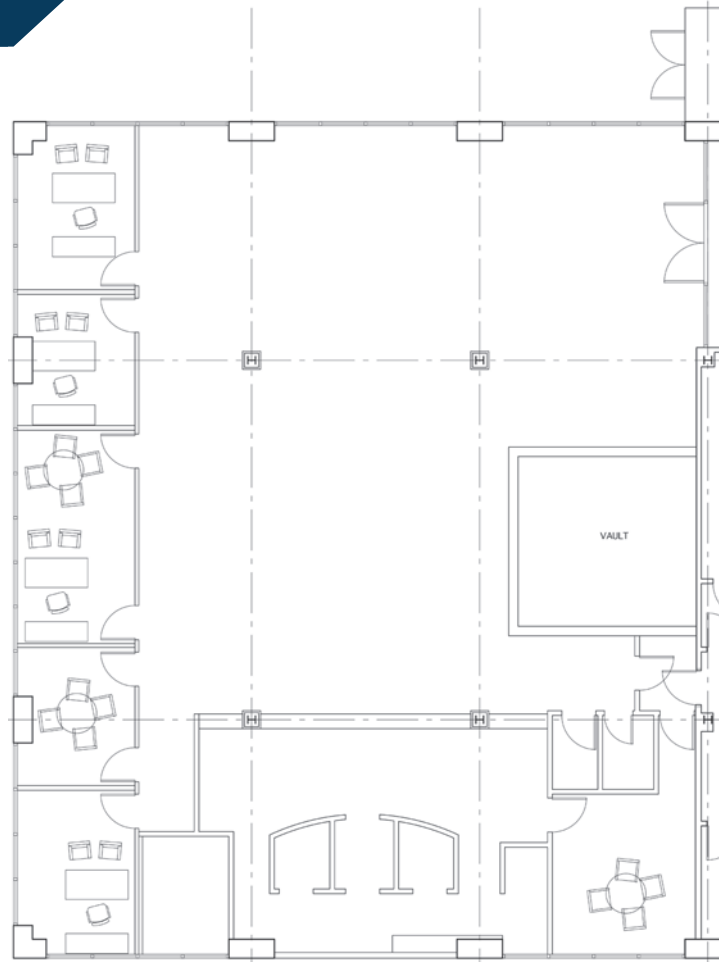
SUITE 100 | 4,458 SF | 1ST FLOOR



# 5900 CORE AVE

NORTH CHARLESTON, SC 29406

## FLOOR PLAN



**SUITE 100 | 4,458 SF | 1ST FLOOR**

**Contact:**

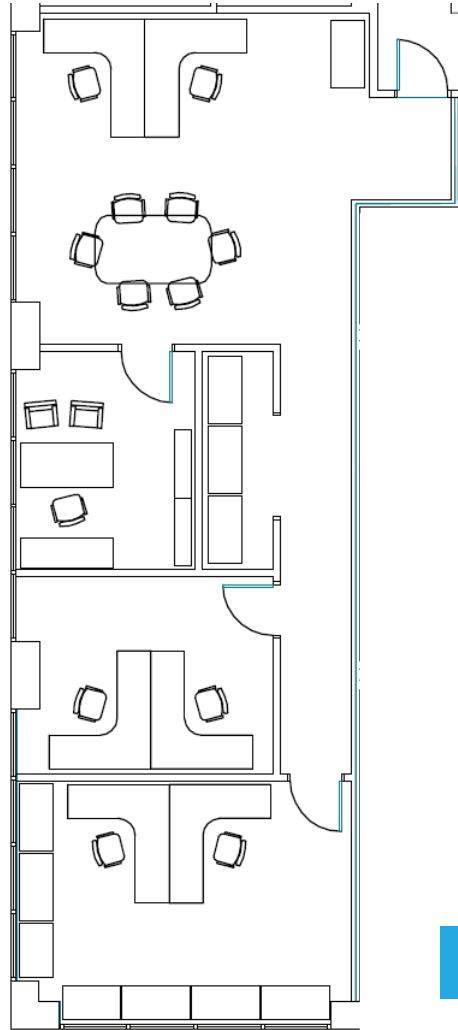
Jeremy Willits  
Senior Vice President  
+1.843.270.9205

[jeremy.willits@harborcommercialpartners.com](mailto:jeremy.willits@harborcommercialpartners.com)

# 5900 CORE AVE

NORTH CHARLESTON, SC 29406

## FLOOR PLAN



**SUITE 204 | 1,440 SF | 2ND FLOOR**

**Contact:**

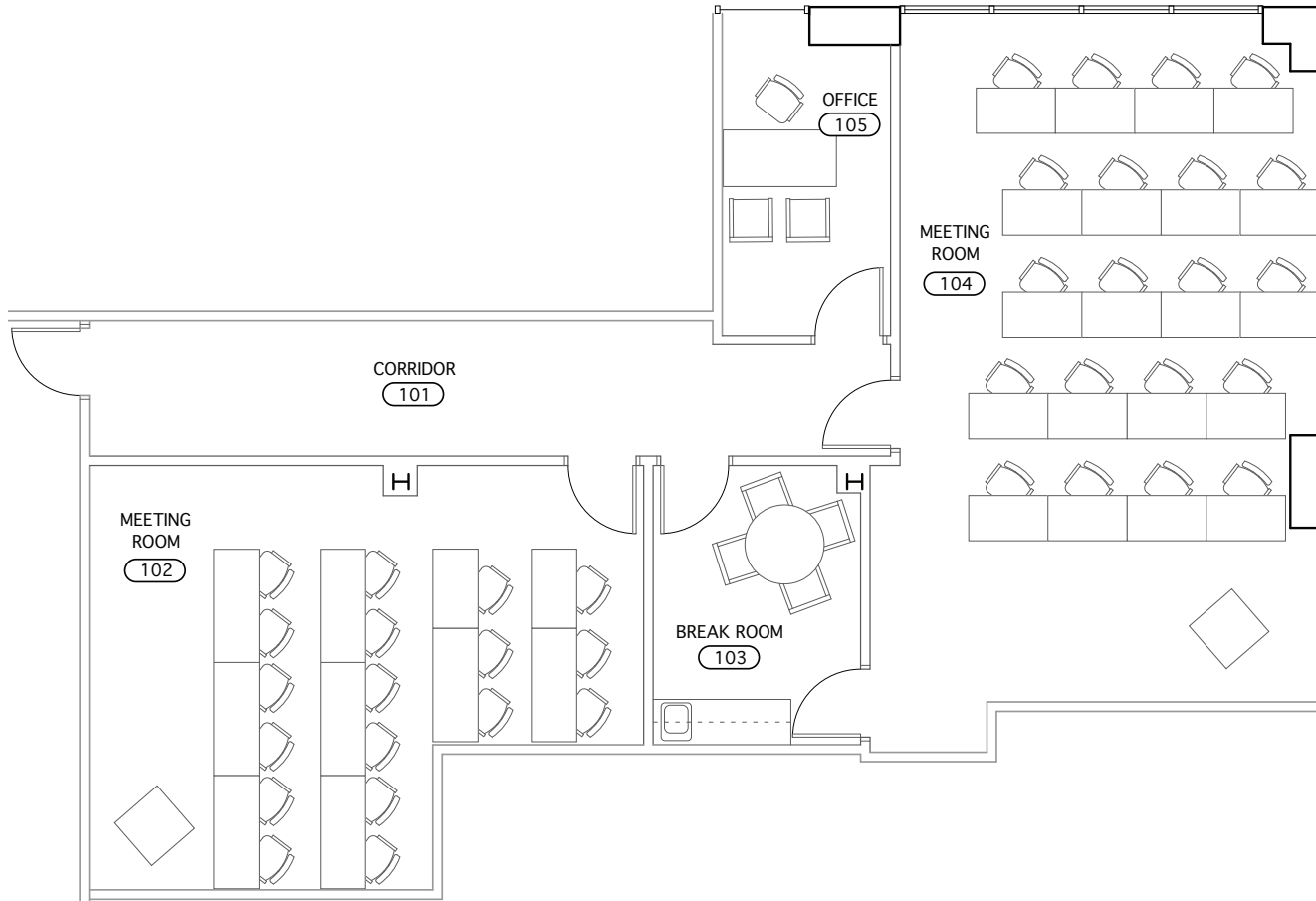
Jeremy Willits  
Senior Vice President  
+1.843.270.9205

[jeremy.willits@harborcommercialpartners.com](mailto:jeremy.willits@harborcommercialpartners.com)

# 5900 CORE AVE

NORTH CHARLESTON, SC 29406

## FLOOR PLAN



**SUITE 502 | 1,564 SF | 5TH FLOOR**

**Contact:**



# 5900 CORE AVE

NORTH CHARLESTON, SC 29406

## LOCATION



**SITE**

**NORTH CHARLESTON**

**DANIEL ISLAND**

**MOUNT PLEASANT**

**WEST ASHLEY**

**CHARLESTON**

**JAMES ISLAND**

**JOHNS ISLAND**

### OVERVIEW:

The central location just north of the I-26/I-95 Interchange provides quick access to all areas of the Charleston market.

**Contact:**

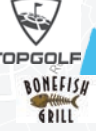
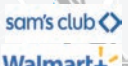
Jeremy Willits  
Senior Vice President  
+1.843.270.9205

[jeremy.willits@harborcommercialpartners.com](mailto:jeremy.willits@harborcommercialpartners.com)

# 5900 CORE AVE

NORTH CHARLESTON, SC 29406

## AMENITIES



Contact:

Jeremy Willits  
Senior Vice President  
+1.843.270.9205

[jeremy.willits@harborcommercialpartners.com](mailto:jeremy.willits@harborcommercialpartners.com)

**5900 CORE AVE**

**NORTH CHARLESTON, SC 29406**



**Contact us:**

**146 Williman Street, Units 300 & 400  
Charleston, SC 29403**

**[www.harborcommercialpartners.com](http://www.harborcommercialpartners.com)**

**+1.843.994.7198**



**Jeremy Willits**

**Senior Vice President**

**+1.843.270.9205**

**[jeremy.willits@harborcommercialpartners.com](mailto:jeremy.willits@harborcommercialpartners.com)**