

Land for Sale, Industrial Park Land

Industrial Park Land | W. David Drive & Broadwell Avenue | York, NE 68467



Site Overview

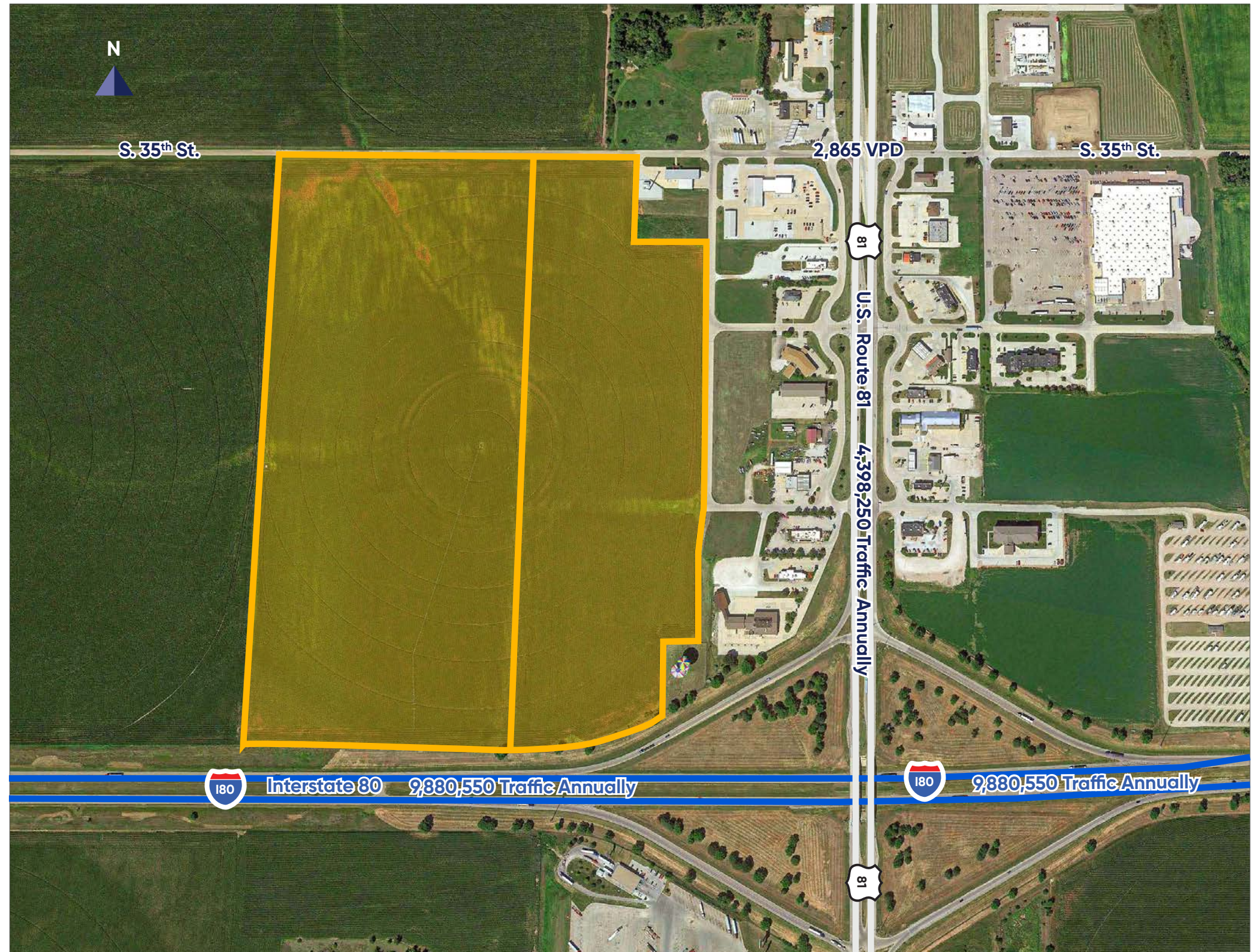
Listing Price	\$2,727,750
Premises	109.11 Acres
Zoning	Industrial
Daily Traffic Flow	39,120
County	York County
Build to Suit	Yes
Utilities	To site

Industrial Overview

Ideally located, this site is excellent for a distribution, LTL, or manufacturing company needing one-day-drive access to many of the country's major metropolitan areas including Kansas City, Denver, Chicago, Minneapolis, and Milwaukee among others. Site is available for development including build-to-suit possibilities.

Highlights

- Tax increment financing eligible
- Located right off Interstate 80 exit
- Great visibility from Interstate 80 Hwy. 81 (55 miles per hour)
- Majority of the nation is within a two-day drive
- Site has immediate access to Hwy. 81 (55 miles per hour)

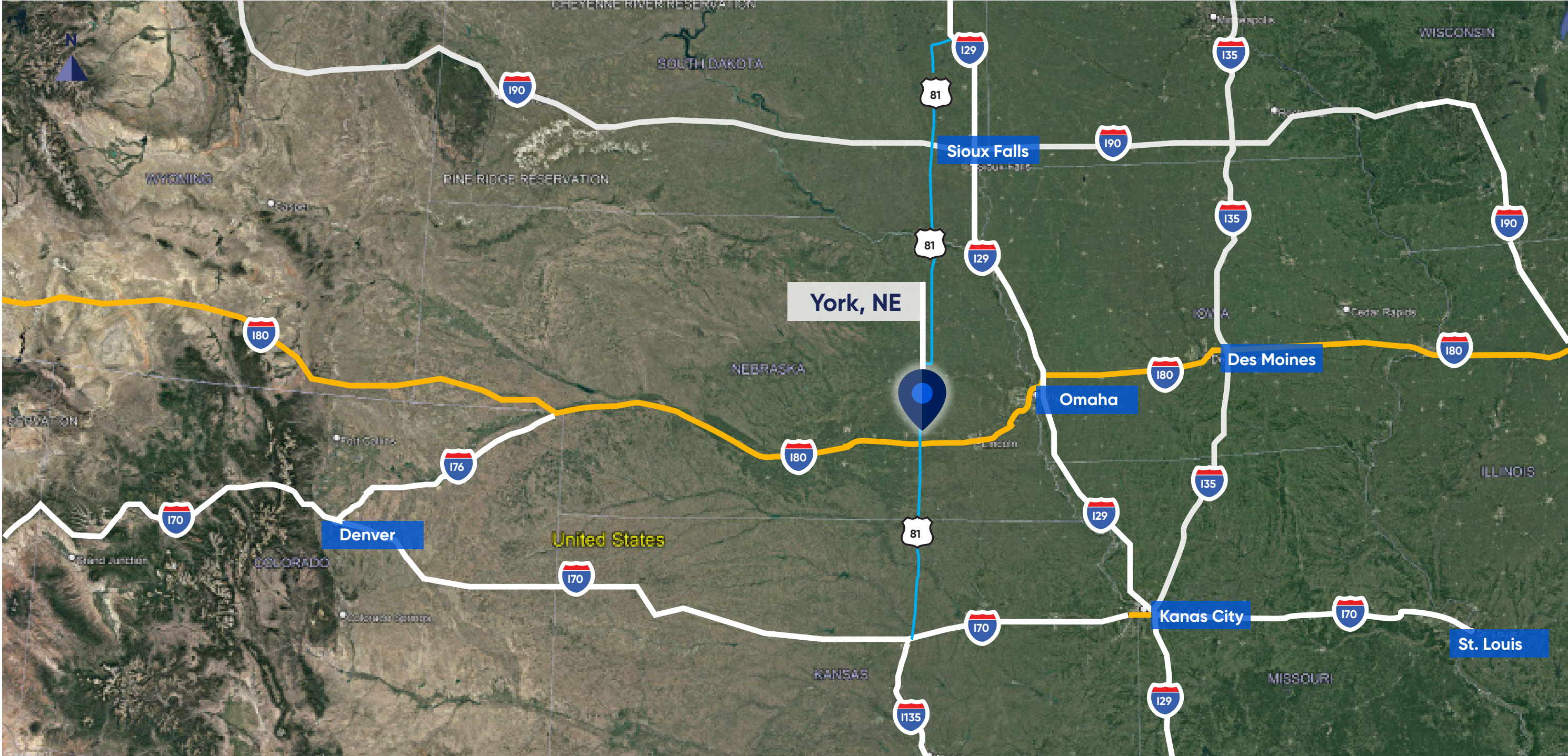


Land for Sale, Industrial Park Land

Industrial Park Land | W. David Drive & Broadwell Avenue | York, NE 68467



York, Nebraska



Land for Sale, Industrial Park Land

Industrial Park Land | W. David Drive & Broadwell Avenue | York, NE 68467



York, Nebraska

York, NE - Area Retailer Map



Land for Sale, Industrial Park Land

Industrial Park Land | W. David Drive & Broadwell Avenue | York, NE 68467



York, Nebraska

York, NE, US-81 Traffic Counts

AADT Year	2018
Total AADT	12,050
Truck AADT	1,455

York, NE, I-80 Traffic Counts

AADT Year	2018
Total AADT	27,070
Truck AADT	8,365

Contact



Erick Tjarks
312.221.6374
etjarks@cresa.com



Tanner Borchardt
402.251.5447
tborchardt@cresa.com



Johnny Dorn
402.764.9455
jdorn@cresa.com

York 10-Hour Drive Radius - US Map

