



FOR SALE

TWO PARCELS

821-831 & 833-839 INTERNATIONAL BOULEVARD | OAKLAND, CA 94606

31,724 Total SF

~30 Parking Spaces

\$5,000,000



JOHN LOH

DRE #00759923
510-339-9825 x102
jnloh@lohrealty.com

RICK DA SILVA

DRE # 01127193
510-339-9825 x103
rdasilva@lohrealty.com

CASEY KLEIN

DRE #02015179
510-339-9825 x104
casey@lohrealty.com

PROPERTY OVERVIEW

821-831 AND 833-839 INTERNATIONAL BOULEVARD

TWO PARCELS FOR SALE:

International Plaza (821-831) AND (833-839)
International Boulevard

International Plaza (821-831) is a two-story commercial building comprising approximately 20,304± total square feet. The 2nd neighboring Parcel (833-839 International Blvd) is single story Retail strip mall built in 1997 consisting of 10 units and 7,360 Square feet. Total LAND Size for both parcels is 31,724 Square Feet. Parking for ~30 cars.

International Plaza is centrally situated in the heart of the bustling “Little Saigon” commercial corridor of Oakland’s Eastlake District, roughly one mile from Oakland’s rapidly growing Downtown Central Business District. The property’s prime location on International Boulevard also provides convenient access to Interstate 880, the City of Alameda and Oakland’s scenic Lake Merritt.

SUMMARY

PROPERTY ADDRESSES	821-831 AND 833-839 INTERNATIONAL BOULEVARD OAKLAND, CA 94606
BUILDING SQUARE FEET	31,724
YEAR BUILT	1962, 1967
ASKING PRICE	\$5,000,000
OFF STREET PARKING SPACES	30

Most leases are currently month to month.
Contact brokers for details.



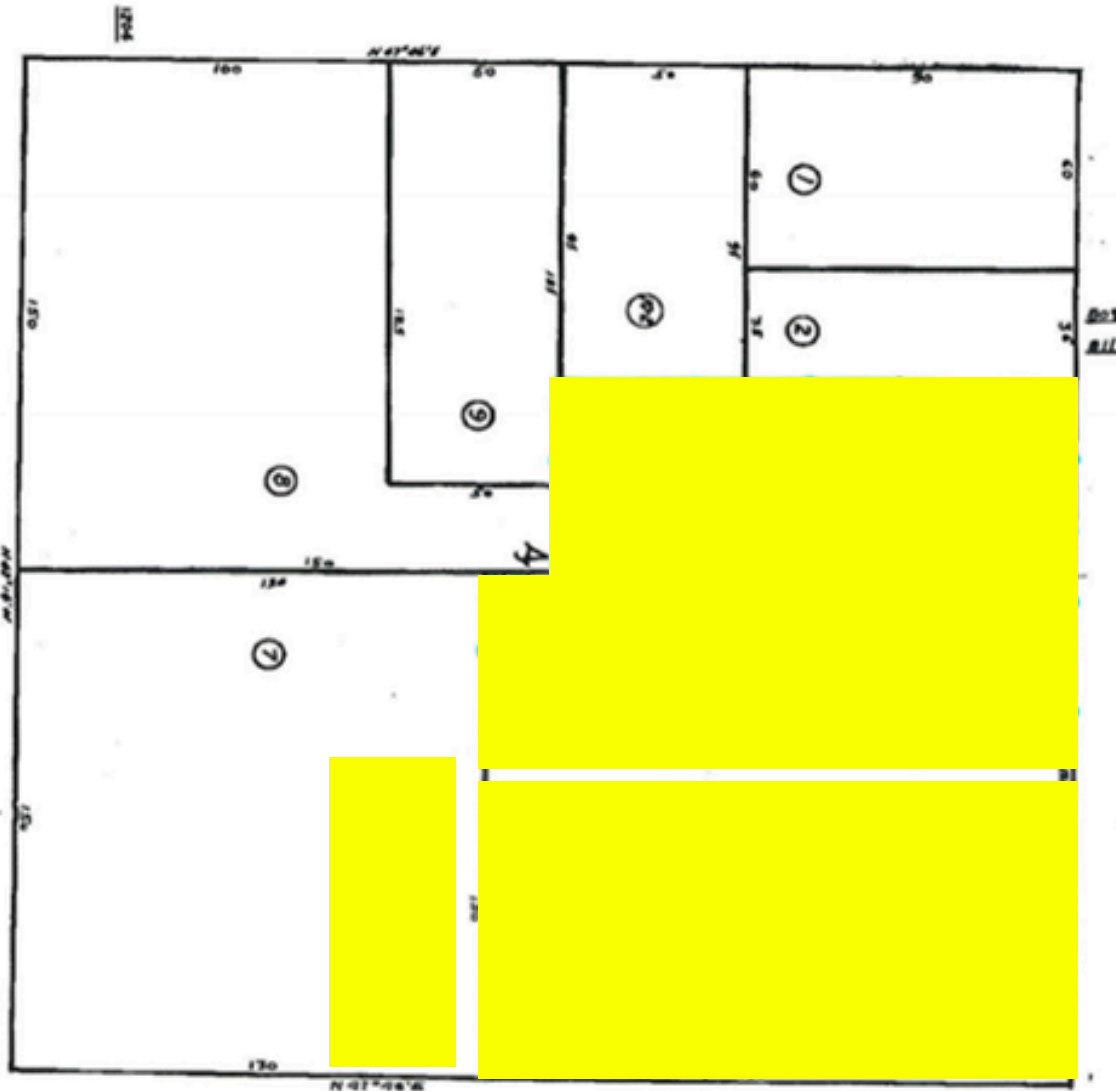
PARCEL MAP

821-831 AND 833-839
INTERNATIONAL
BOULEVARD

8th Ave.

East 12th Street

East 14th Street



9th Ave.

NEARBY LOCATIONS

821-831 AND 833-839 INTERNATIONAL BOULEVARD

ALAMEDA

SAN
FRANCISCO

LANEY
COLLEGE

880 FWY

BROOKLYN
BASIN

KAISER
CENTER



7 MILES
BERKELEY



8 MILES
OAKLAND
AIRPORT



28 MINS
SAN
FRANCISCO

12 MILES
DOWNTOWN
SAN
FRANCISCO

25 MILES
SAN
FRANCISCO
AIRPORT

39 MINS
WALNUT
CREEK

18 MILES
WALNUT
CREEK

39 MILES
SAN JOSE
AIRPORT

25 MINS
BERKELEY

Times may vary. Verify traffic conditions upon departure.

WALK SCORE: 90



TWO PARCELS FOR SALE

821-831 AND 833-839 INTERNATIONAL BLVD. | OAKLAND, CA 94606

RICK DA SILVA

+ DRE # 01127193
510-339-9825 x103
rdasilva@lohrealty.com

JOHN LOH

+ DRE #00759923
510-339-9825 x102
johnloh@lohrealty.com

CASEY KLEIN

+ DRE #02015179
510-339-9825 x104
casey@lohrealty.com

© 2025 LOH Realty & Investments Inc.. All rights reserved. The information contained herein has been obtained from sources deemed reliable, and has not been independently verified by LOH Realty & Investments. No representation or warranty is made with respect to the accuracy or completeness of the information provided herein. Any and all projections, opinions, assumptions or estimates are used for example only and do not necessarily reflect the current or future performance of the property. Linear and area measurements are approximate, often are inaccurate, and should be confirmed by a surveyor. Prospective purchasers, lessees and other interested parties should have experts of their own selection thoroughly inspect the property in its entirety and independently verify all information. Real estate brokers are not qualified to act as or to select experts with regard to legal, tax, environmental, construction or other such matters.