



OFFICE/RETAIL SPACE FOR LEASE 127 MAIN STREET ROSELLE, IL



BUILDING FEATURES:

- 4,595 SF Available Immediately For Lease
- Free Standing Office/retail/Showroom Space
- Excellent Visibility & building signage available
- 24 hour access w/ private entrance & restrooms
- Tenant Controlled HVAC
- Walking distance to Roselle Train Station
- Landlord will customize the space to tenant specs
- Ideal for office users, financial services, Non-profits, flex retail/office or showroom
- High Speed Internet! TV Available via Comcast
- Operable Windows
- Located adjacent to several newer multi-story retail/residential redevelopments
- Zoning: B-2 or B-3 Allowed Uses
- **Rental Rate: TBD**

AVAILABLE SPACE

Building	Size (SF)
127	4,595 SF

FOR MORE INFORMATION:

RANDY OLCZYK
Direct: 847.246.9611
randy@chicagolandcommercial.com

TOM CALLAHAN
Direct: 847.246.9636
Tom@chicagolandcommercial.com



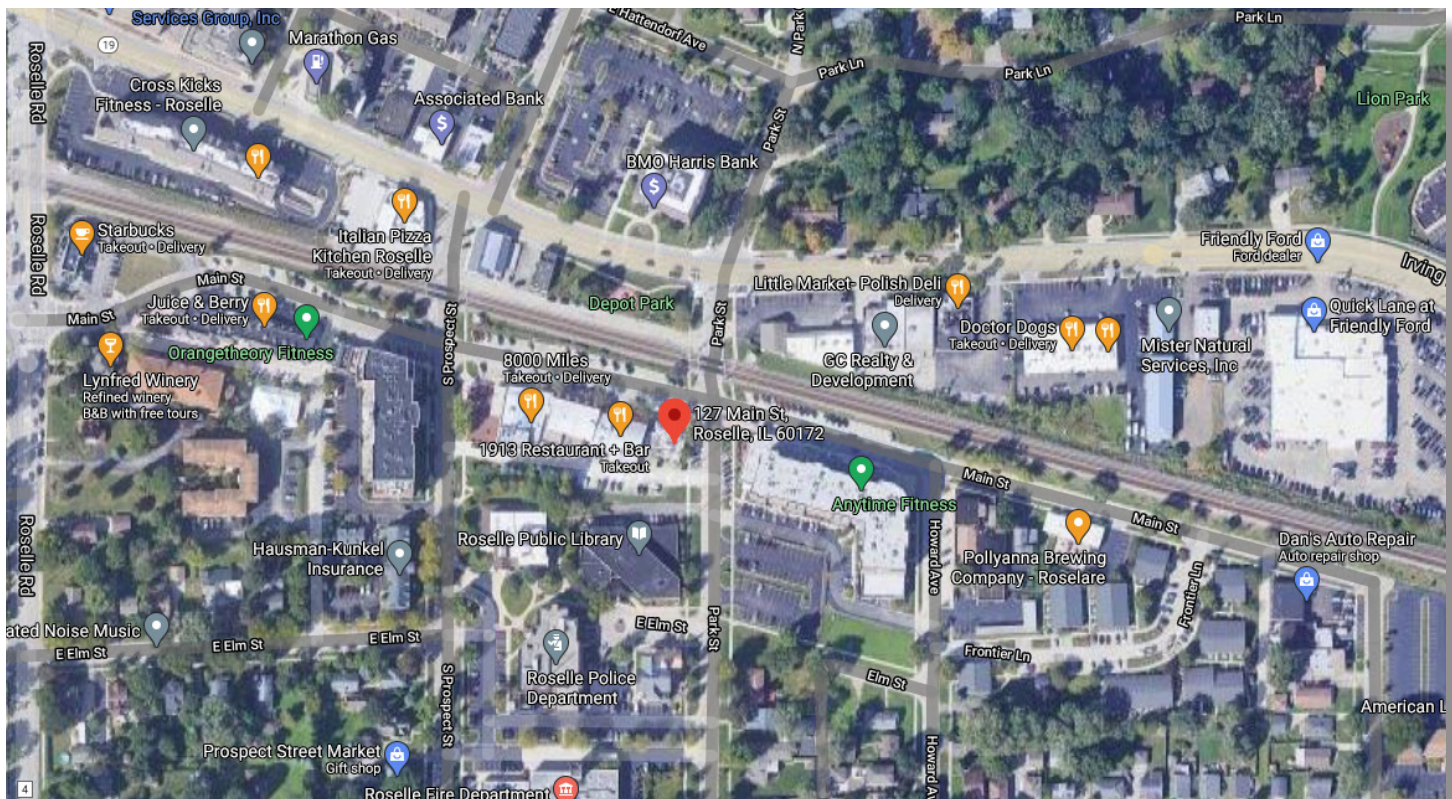
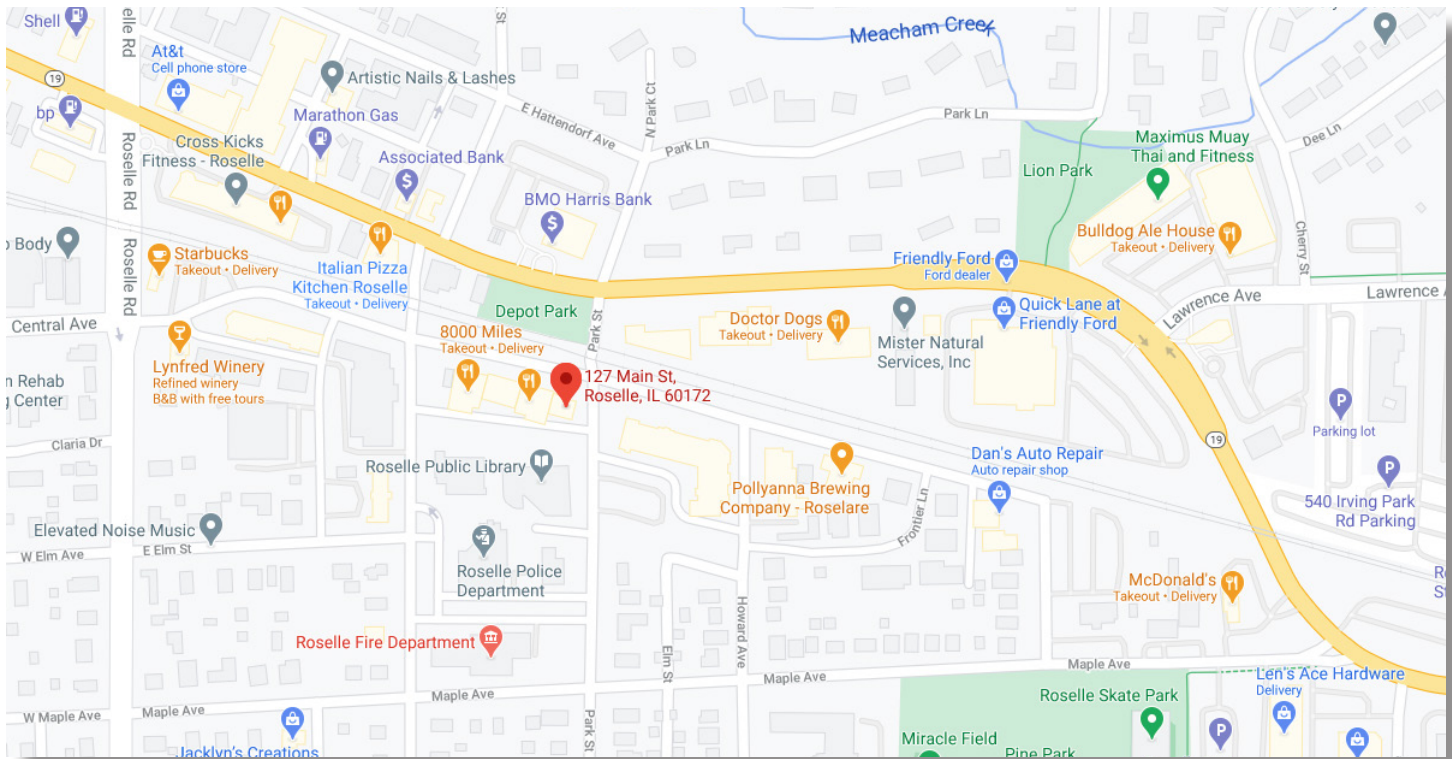
4811 Emerson Ave Suite 112, Palatine, IL



OFFICE/RETAIL SPACE FOR LEASE

127 MAIN STREET ROSELLE, IL

Area Maps





OFFICE/RETAIL SPACE FOR LEASE

127 MAIN STREET ROSELLE, IL

INTERIOR PHOTOS:



FOR MORE INFORMATION:

RANDY OLCZYK
Direct: 847.246.9611
randy@chicagolandcommercial.com

TOM CALLAHAN
Direct: 847.246.9636
Tom@chicagolandcommercial.com

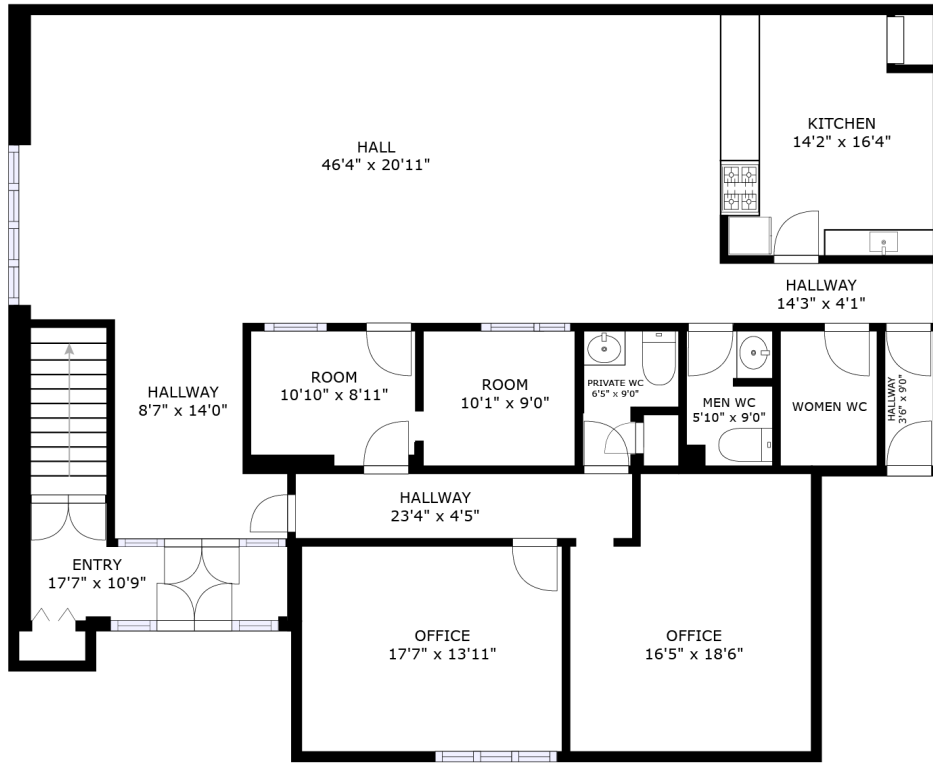


4811 Emerson Ave Suite 112, Palatine, IL

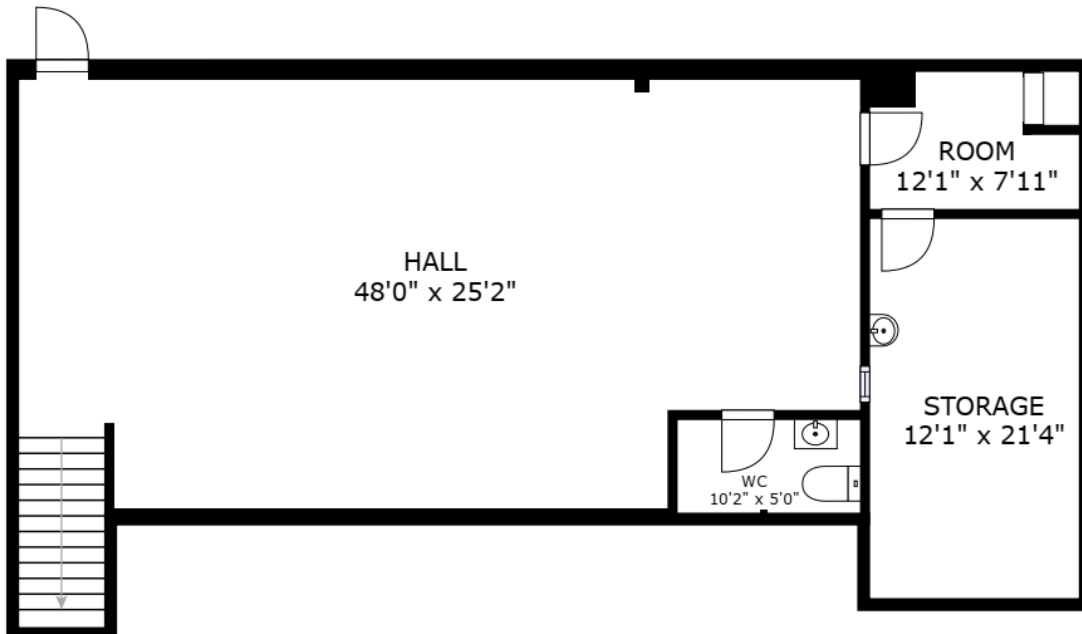


OFFICE/RETAIL SPACE FOR LEASE 127 MAIN STREET ROSELLE, IL

FLOOR PLAN: 4,595 RSF (1ST FLOOR & LOWER LEVEL)



1ST FLOOR



LOWER LEVEL

BASEMENT

FOR MORE INFORMATION:

RANDY OLCZYK
 Direct: 847.246.9611
 randy@chicagolandcommercial.com

TOM CALLAHAN
 Direct: 847.246.9636
 Tom@chicagolandcommercial.com



4811 Emerson Ave Suite 112, Palatine, IL