

RETAIL PROPERTY // FOR SALE / LEASE

5,522 SF OFFICE/RETAIL IN DETROIT WITH GREAT VISIBILITY

16180 MEYERS RD
DETROIT, MI 48235



- Ideal for office, non-profit, or medical
- Retail uses could be bakery or catering
- The layout consists of a large open area & private offices
- Security in place
- Additional parking is available next door
- Close to M-10/The Lodge Freeway



P.A. COMMERCIAL
Corporate & Investment Real Estate

26555 Evergreen Road, Suite 1500
Southfield, MI 48076

248.358.0100

pacommercial.com

16180 MEYERS RD, DETROIT, MI 48235 // FOR SALE / LEASE

EXECUTIVE SUMMARY



Sale Price	\$275,000
Lease Rate	\$9.80 SF/YR (NNN)

PROPERTY OVERVIEW

Stand-alone building with plenty of potential! Many uses possible include office, retail, a bakery, catering, daycare, and medical. Ideal for medium-sized business to large non-profits Kitchen is also available. The building consists of a large open area with private offices. Security and internet are already in place. Motivated Landlord - will build to suit!

OFFERING SUMMARY

Building Size:	5,522 SF
Available SF:	5,522 SF
Lot Size:	0.18 Acres
Price / SF:	\$49.80
Year Built:	1956
Zoning:	B2 Local Business
Market:	Detroit
Traffic Count:	11,000

LOCATION OVERVIEW

Centrally located on a main street with immediate access to M-10/The Lodge Freeway. Nestled among retail and emerging redevelopment. Near Marygrove College, DMC Sinai Grace Hospital, and the University of Detroit Mercy. Just minutes from downtown Detroit.

PROPERTY HIGHLIGHTS

- Ideal for office, non-profit, or medical
- Retail uses could be bakery or catering
- The layout consists of a large open area & private offices
- Security in place
- Additional parking is available next door
- Close to M-10/The Lodge Freeway



P.A. COMMERCIAL
Corporate & Investment Real Estate

Kevin Bull SENIOR ASSOCIATE

D: 248.358.5361 | **C:** 248.895.9972

kevin@pacommercial.com

16180 MEYERS RD, DETROIT, MI 48235 // FOR SALE / LEASE

ADDITIONAL PHOTOS

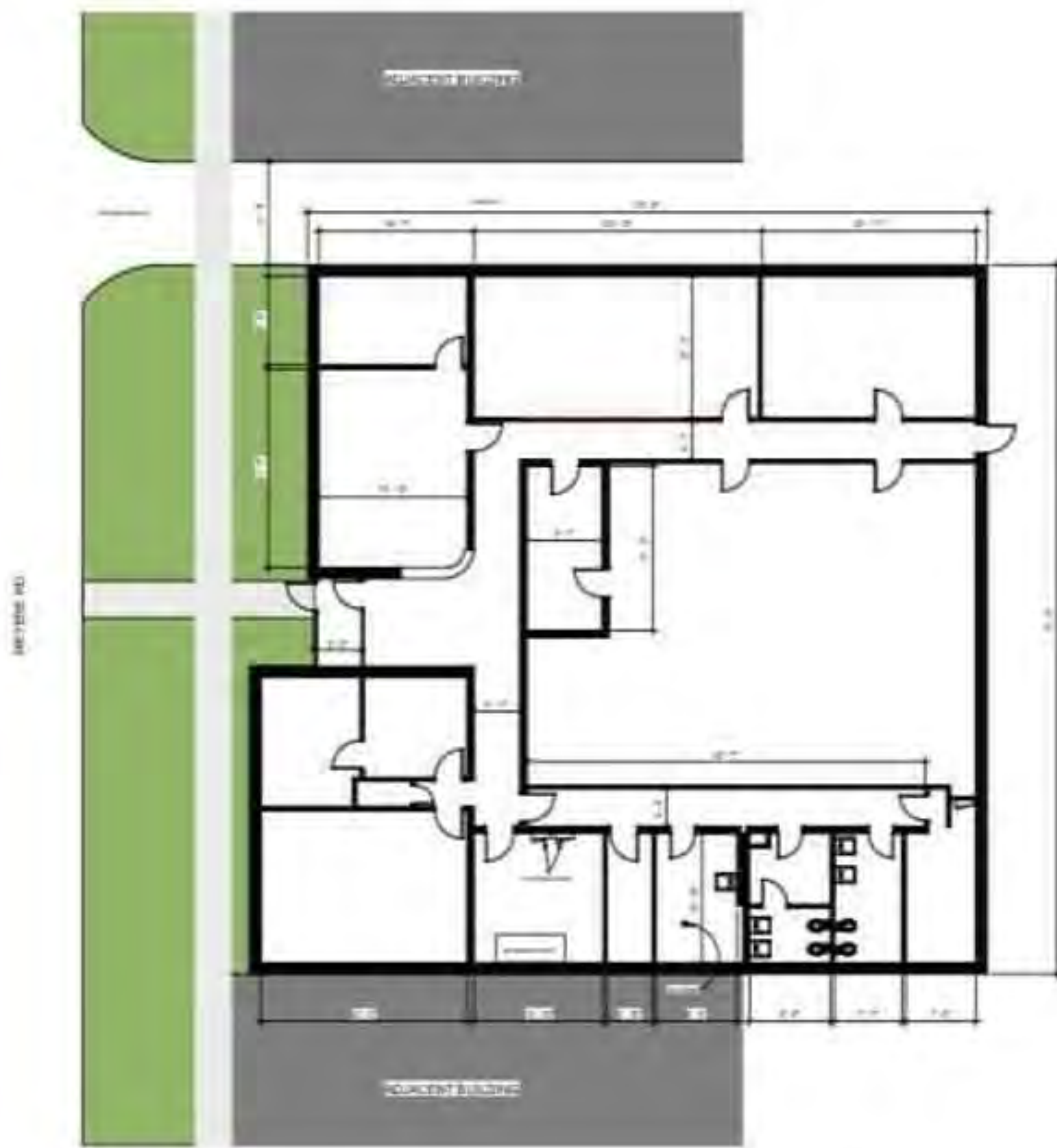


P.A. COMMERCIAL
Corporate & Investment Real Estate

Kevin Bull SENIOR ASSOCIATE
D: 248.358.5361 | C: 248.895.9972
kevin@pacommercial.com

16180 MEYERS RD, DETROIT, MI 48235 // FOR SALE / LEASE

FLOOR PLANS



P.A. COMMERCIAL
Corporate & Investment Real Estate

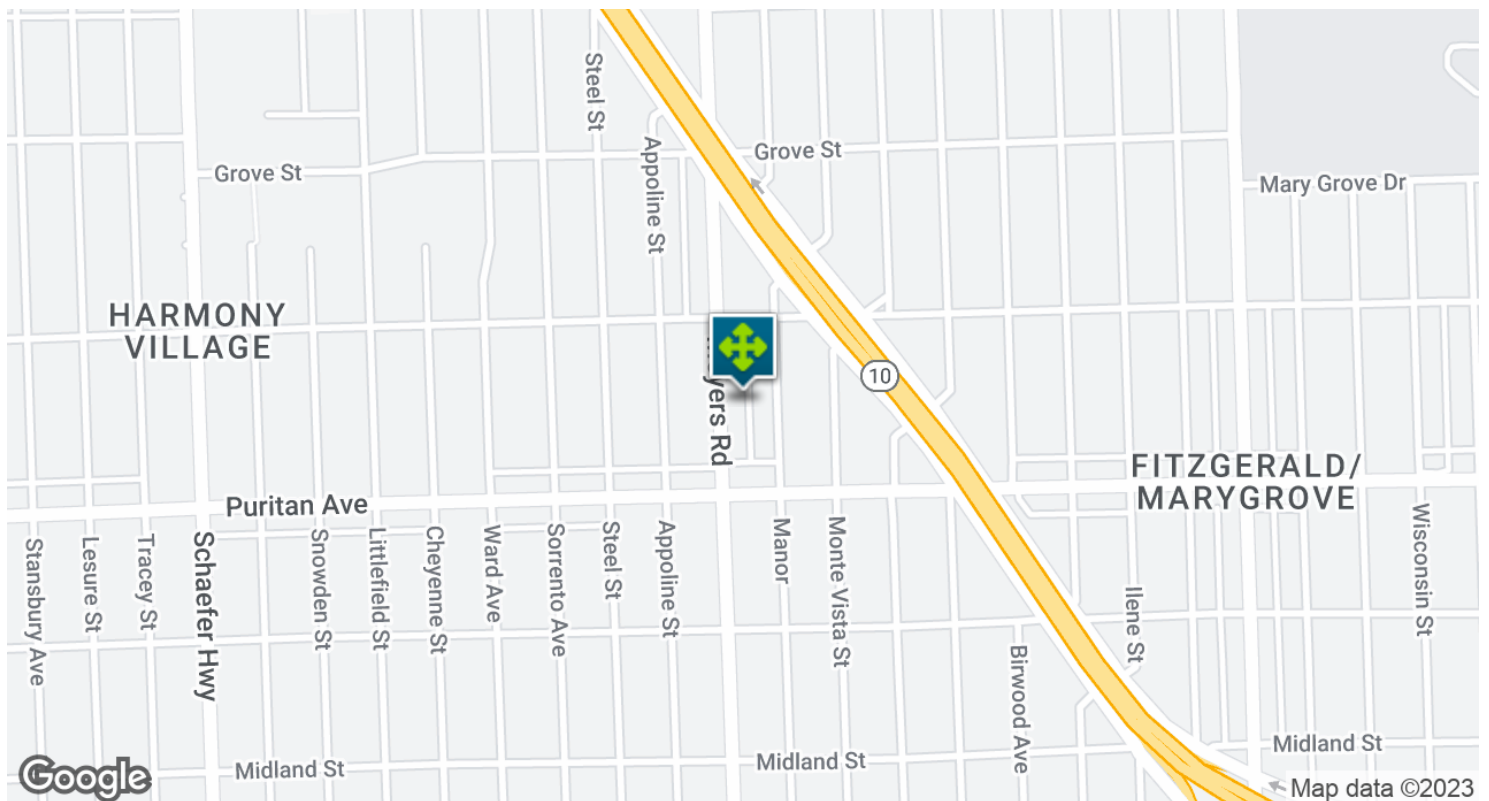
Kevin Bull SENIOR ASSOCIATE
D: 248.358.5361 | C: 248.895.9972
kevin@pacommercial.com

RETAILER MAP



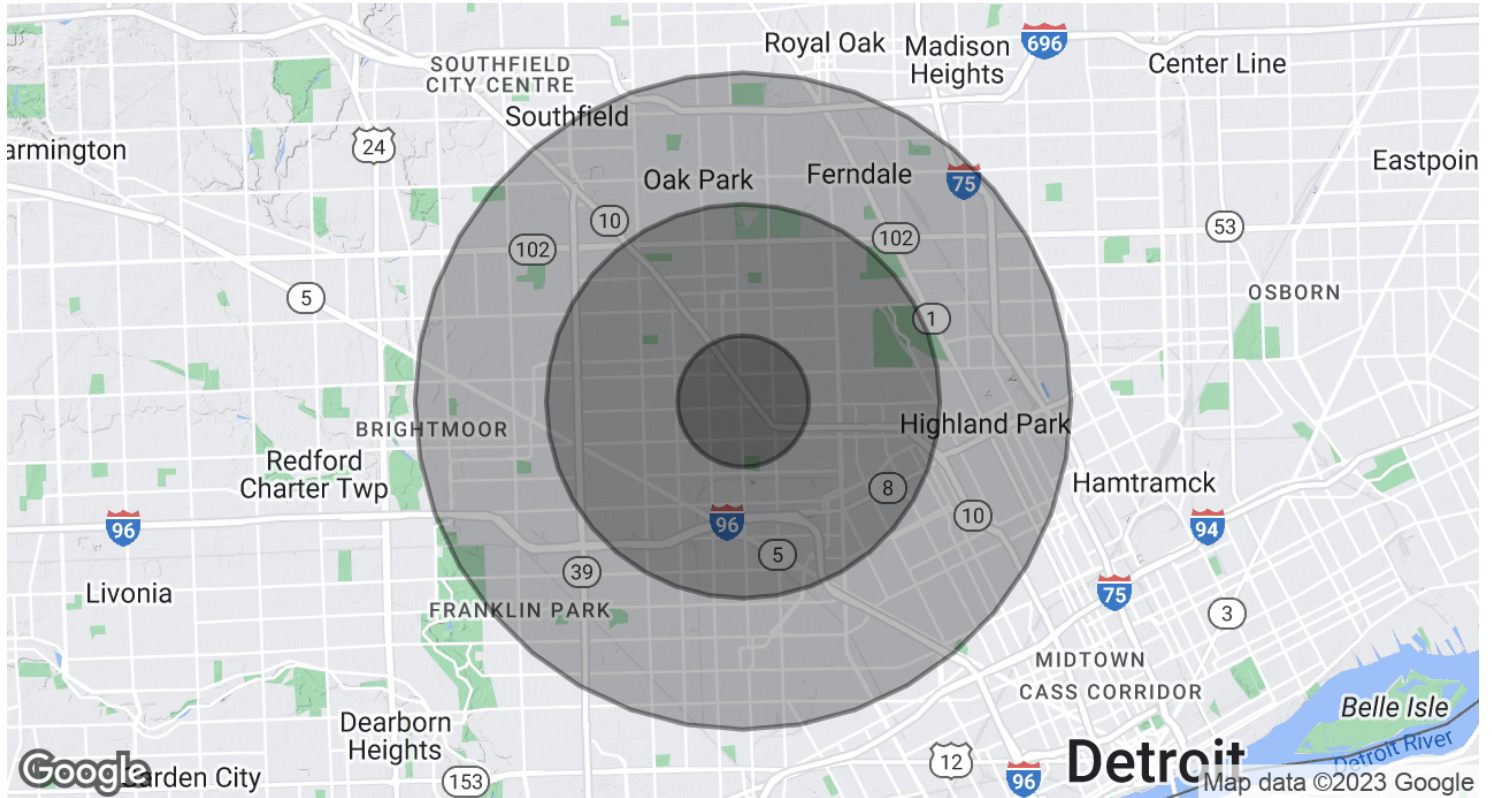
16180 MEYERS RD, DETROIT, MI 48235 // FOR SALE / LEASE

LOCATION MAP



16180 MEYERS RD, DETROIT, MI 48235 // FOR SALE / LEASE

DEMOGRAPHICS MAP & REPORT



POPULATION

	1 MILE	3 MILES	5 MILES
Total Population	22,631	165,529	406,672
Average Age	38.0	38.9	37.9
Average Age (Male)	34.6	35.7	35.6
Average Age (Female)	40.2	41.5	39.9

HOUSEHOLDS & INCOME

	1 MILE	3 MILES	5 MILES
Total Households	10,870	86,870	213,008
# of Persons per HH	2.1	1.9	1.9
Average HH Income	\$31,564	\$37,983	\$40,855
Average House Value	\$58,972	\$78,771	\$87,782

* Demographic data derived from 2020 ACS - US Census



P.A. COMMERCIAL
Corporate & Investment Real Estate

Kevin Bull SENIOR ASSOCIATE

D: 248.358.5361 | C: 248.895.9972

kevin@pacommercial.com

16180 MEYERS RD, DETROIT, MI 48235 // FOR SALE / LEASE

CONTACT US



FOR MORE INFORMATION, PLEASE CONTACT:



Kevin Bull

SENIOR ASSOCIATE

D: 248.358.5361

C: 248.895.9972

kevin@pacommercial.com

P.A. Commercial

26555 Evergreen Road, Suite 1500

Southfield, MI 48076

P: 248.358.0100

F: 248.358.5300

pacommercial.com

Follow Us!



P.A. COMMERCIAL
Corporate & Investment Real Estate