

# PRESIDENTIAL CT I

6213-6237 Presidential Court | Fort Myers, FL 33919

Office Units for Lease



**LQ Commercial**  
REAL ESTATE SERVICES

**LQCRE.COM**



**\$16.00**  
PSF



**880 - 2,185 SF**  
UNIT SIZE



**46,409 SF**  
RBA

- Four 880-2,018 SF office units for lease available December 1st.
- Near the intersection of Summerlin Road and College Parkway, two of Fort Myers' busiest commercial corridors.
- Minutes from US-41 (Cleveland Avenue), a primary north-south commercial corridor.
- Within a dense office and service corridor that includes medical practices, financial institutions, and professional service firms.
- Less than a mile from Florida SouthWestern State College.



[PROPERTIES.LQCRE.COM/PRESIDENTIAL-OFFICE](https://properties.lqcre.com/presidential-office)



**TOTAL POPULATION**  
**157,028**



**5-MI EMPLOYEES**  
**100,174**



**AVERAGE HH INCOME**  
**\$111,853**



**LQ Commercial**  
REAL ESTATE SERVICES

3555 Kraft Rd #260  
Naples, FL 34105  
**LQCRE.COM**

**Mike Concilla**

Principal

D: 239.275.4922 x405

C: 239.823.9882

[mconcilla@lqcre.com](mailto:mconcilla@lqcre.com)

**Nick Matson**

Associate

D: 239.275.4922 x408

C: 239.351.0137

[nmatson@lqcre.com](mailto:nmatson@lqcre.com)

Information obtained from owner(s) or other sources deemed reliable. We have no reason to doubt its accuracy, but cannot guarantee it. All properties subject to change or withdrawal without notice.

# PRESIDENTIAL CT I

6213-6237 Presidential Court | Fort Myers, FL 33919

Office Units for Lease



**LQ Commercial**  
REAL ESTATE SERVICES

**LQCRE.COM**

## AVAILABLE SPACES

SUITE	SIZE	LEASE RATE	DESCRIPTION
6123 Presidential Court #110	880 SF	\$16.00 PSF	<ul style="list-style-type: none"><li>• Large Room (Conference or Open Workspace)</li><li>• Restroom</li><li>• Break Room</li><li>• 2 Offices</li></ul> <p><i>Flexible suite with meeting space</i></p>
6213 Presidential Court #130	2,018 SF	\$16.00 PSF	<ul style="list-style-type: none"><li>• 5 Private Offices</li><li>• Reception Area</li><li>• Large Conference Room</li><li>• 2 Restrooms</li><li>• Break Room</li></ul> <p><i>Ideal for medical, professional, or administrative users</i></p>
6225 Presidential Court #110	2,185 SF	\$16.00 PSF	<ul style="list-style-type: none"><li>• 3 Offices</li><li>• 2 Restrooms</li><li>• Kitchen/Break Room</li><li>• Large Open Area</li><li>• Big Storage Room or Another Office</li></ul>
6225 Presidential Court #170	1,000 SF	\$16.00 PSF	<ul style="list-style-type: none"><li>• 2 Private Offices</li><li>• Conference Room</li><li>• Restroom</li><li>• Large Hallway / Waiting Room</li></ul>
6237 Presidential Court #100	1,242 SF	\$16.00 PSF	<ul style="list-style-type: none"><li>• 4 Offices</li><li>• 2 Bathrooms</li><li>• Small Reception Area</li></ul>



**LQ Commercial**  
REAL ESTATE SERVICES

3555 Kraft Rd #260

Naples, FL 34105

**LQCRE.COM**

**Mike Concilla**

Principal

D: 239.275.4922 x405

C: 239.823.9882

**mconcilla@lqcre.com**

**Nick Matson**

Associate

D: 239.275.4922 x408

C: 239.351.0137

**nmatson@lqcre.com**

Information obtained from owner(s) or other sources deemed reliable. We have no reason to doubt its accuracy, but cannot guarantee it. All properties subject to change or withdrawal without notice.



# PRESIDENTIAL CT I

6213-6237 Presidential Court | Fort Myers, FL 33919

Office Units for Lease



**LQ Commercial**  
REAL ESTATE SERVICES

**LQCRE.COM**



**LQ Commercial**  
REAL ESTATE SERVICES

3555 Kraft Rd #260

Naples, FL 34105

**LQCRE.COM**

**Mike Concilla**

Principal

D: 239.275.4922 x405

C: 239.823.9882

**mconcilla@lqcre.com**

**Nick Matson**

Associate

D: 239.275.4922 x408

C: 239.351.0137

**nmatson@lqcre.com**

Information obtained from owner(s) or other sources deemed reliable. We have no reason to doubt its accuracy, but cannot guarantee it. All properties subject to change or withdrawal without notice.



# PRESIDENTIAL CT I

6213-6237 Presidential Court | Fort Myers, FL 33919

Office Units for Lease



**LQ Commercial**  
REAL ESTATE SERVICES

**LQCRE.COM**



6213 Presidential Court Unit #110



6213 Presidential Court Unit #110



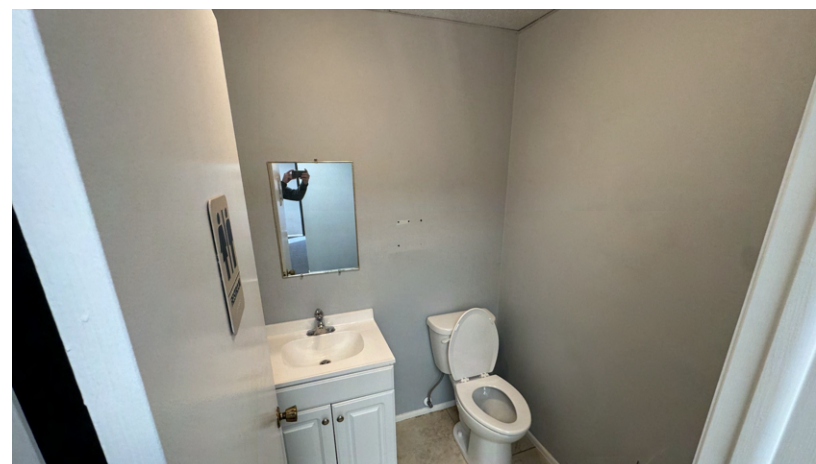
6213 Presidential Court Unit #110



6213 Presidential Court Unit #110



6213 Presidential Court Unit #110



6213 Presidential Court Unit #110



**LQ Commercial**  
REAL ESTATE SERVICES

3555 Kraft Rd #260

Naples, FL 34105

**LQCRE.COM**

**Mike Concilla**

Principal

D: 239.275.4922 x405

C: 239.823.9882

[mconcilla@lqcre.com](mailto:mconcilla@lqcre.com)

**Nick Matson**

Associate

D: 239.275.4922 x408

C: 239.351.0137

[nmatson@lqcre.com](mailto:nmatson@lqcre.com)

Information obtained from owner(s) or other sources deemed reliable. We have no reason to doubt its accuracy, but cannot guarantee it. All properties subject to change or withdrawal without notice.



# PRESIDENTIAL CT I

6213-6237 Presidential Court | Fort Myers, FL 33919

Office Units for Lease

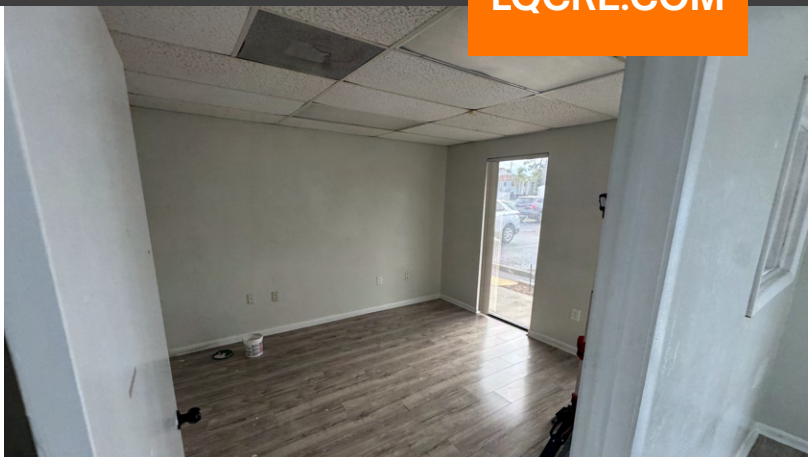


**LQ Commercial**  
REAL ESTATE SERVICES

**LQCRE.COM**



6213 Presidential Court #130



6213 Presidential Court #130



6213 Presidential Court #130



6213 Presidential Court #130



6213 Presidential Court #130



6213 Presidential Court #130



**LQ Commercial**  
REAL ESTATE SERVICES

3555 Kraft Rd #260

Naples, FL 34105

**LQCRE.COM**

**Mike Concilla**

Principal

D: 239.275.4922 x405

C: 239.823.9882

**mconcilla@lqcre.com**

**Nick Matson**

Associate

D: 239.275.4922 x408

C: 239.351.0137

**nmatson@lqcre.com**

Information obtained from owner(s) or other sources deemed reliable. We have no reason to doubt its accuracy, but cannot guarantee it. All properties subject to change or withdrawal without notice.



# PRESIDENTIAL CT I

6213-6237 Presidential Court | Fort Myers, FL 33919

Office Units for Lease



**LQ Commercial**  
REAL ESTATE SERVICES

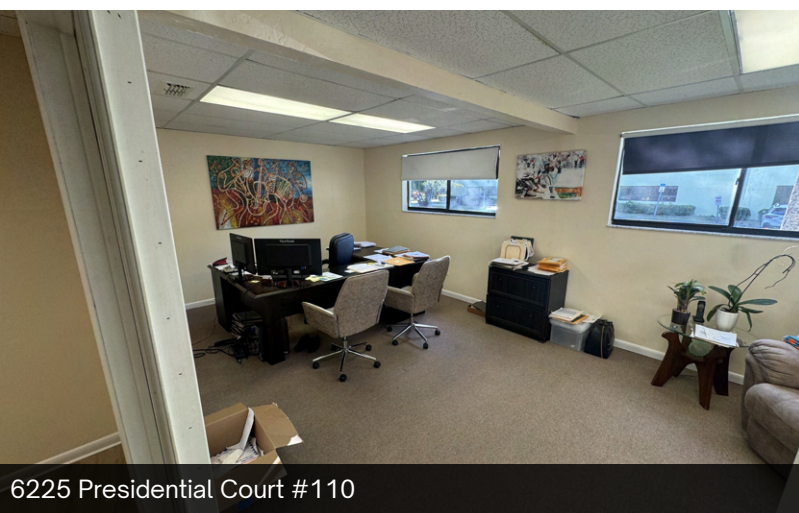
**LQCRE.COM**



6225 Presidential Court #110



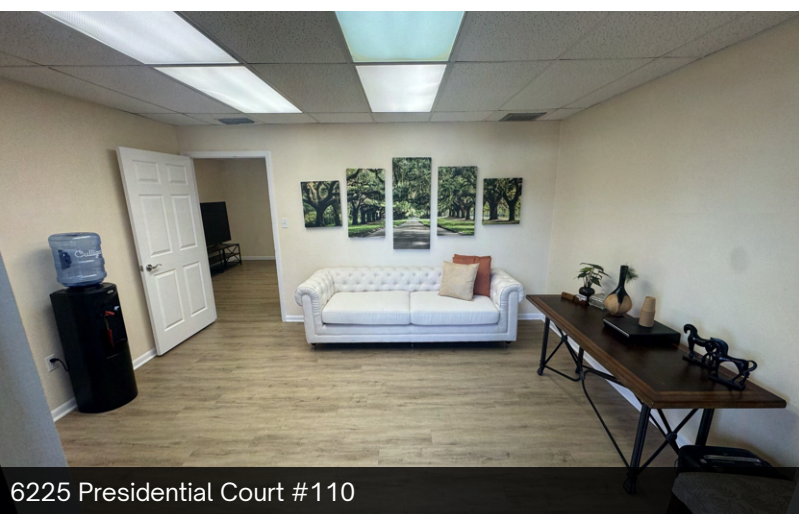
6225 Presidential Court #110



6225 Presidential Court #110



6225 Presidential Court #110



6225 Presidential Court #110



6225 Presidential Court #110



**LQ Commercial**  
REAL ESTATE SERVICES

3555 Kraft Rd #260

Naples, FL 34105

**LQCRE.COM**

**Mike Concilla**

Principal

D: 239.275.4922 x405

C: 239.823.9882

**mconcilla@lqcre.com**

**Nick Matson**

Associate

D: 239.275.4922 x408

C: 239.351.0137

**nmatson@lqcre.com**

Information obtained from owner(s) or other sources deemed reliable. We have no reason to doubt its accuracy, but cannot guarantee it. All properties subject to change or withdrawal without notice.



# PRESIDENTIAL CT I

6213-6237 Presidential Court | Fort Myers, FL 33919

Office Units for Lease

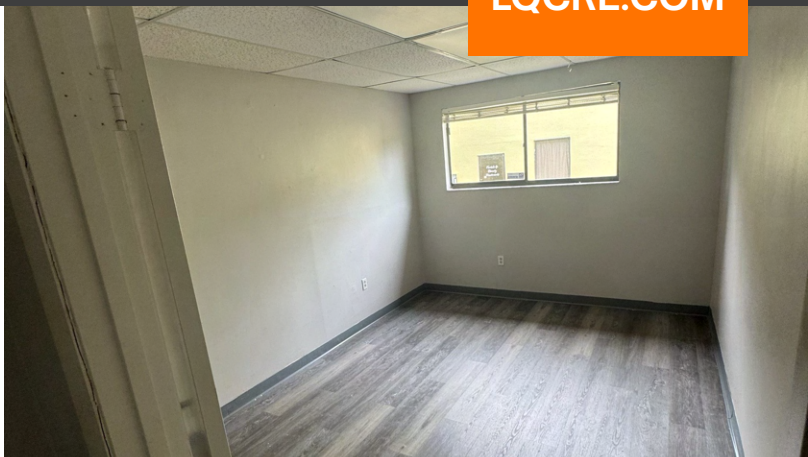


**LQ Commercial**  
REAL ESTATE SERVICES

**LQCRE.COM**



6225 Presidential Court #170



6225 Presidential Court #170



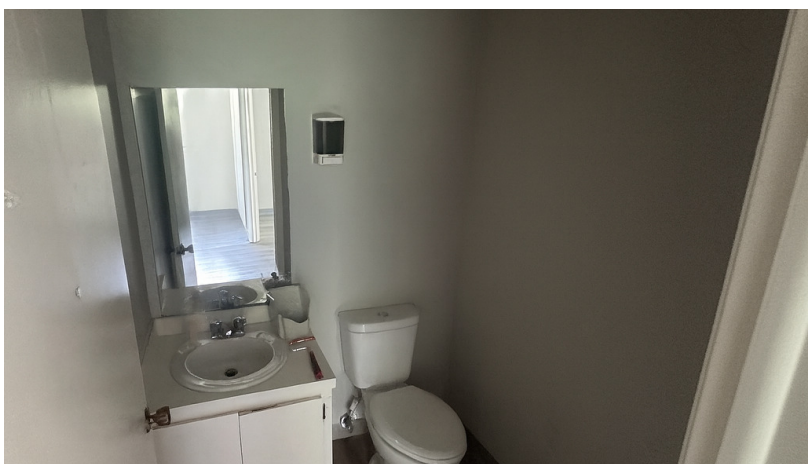
6225 Presidential Court #170



6225 Presidential Court #170



6225 Presidential Court #170



6225 Presidential Court #170



**LQ Commercial**  
REAL ESTATE SERVICES

3555 Kraft Rd #260

Naples, FL 34105

**LQCRE.COM**

**Mike Concilla**

Principal

D: 239.275.4922 x405

C: 239.823.9882

[mconcilla@lqcre.com](mailto:mconcilla@lqcre.com)

**Nick Matson**

Associate

D: 239.275.4922 x408

C: 239.351.0137

[nmatson@lqcre.com](mailto:nmatson@lqcre.com)

Information obtained from owner(s) or other sources deemed reliable. We have no reason to doubt its accuracy, but cannot guarantee it. All properties subject to change or withdrawal without notice.



# PRESIDENTIAL CT I

6213-6237 Presidential Court | Fort Myers, FL 33919

Office Units for Lease



**LQ Commercial**  
REAL ESTATE SERVICES

**LQCRE.COM**



6237 Presidential Court #100



6237 Presidential Court #100



6237 Presidential Court #100



6237 Presidential Court #100



6237 Presidential Court #100



6237 Presidential Court #100



**LQ Commercial**  
REAL ESTATE SERVICES

3555 Kraft Rd #260

Naples, FL 34105

**LQCRE.COM**

**Mike Concilla**

Principal

D: 239.275.4922 x405

C: 239.823.9882

[mconcilla@lqcre.com](mailto:mconcilla@lqcre.com)

**Nick Matson**

Associate

D: 239.275.4922 x408

C: 239.351.0137

[nmatson@lqcre.com](mailto:nmatson@lqcre.com)

Information obtained from owner(s) or other sources deemed reliable. We have no reason to doubt its accuracy, but cannot guarantee it. All properties subject to change or withdrawal without notice.



# PRESIDENTIAL CT I

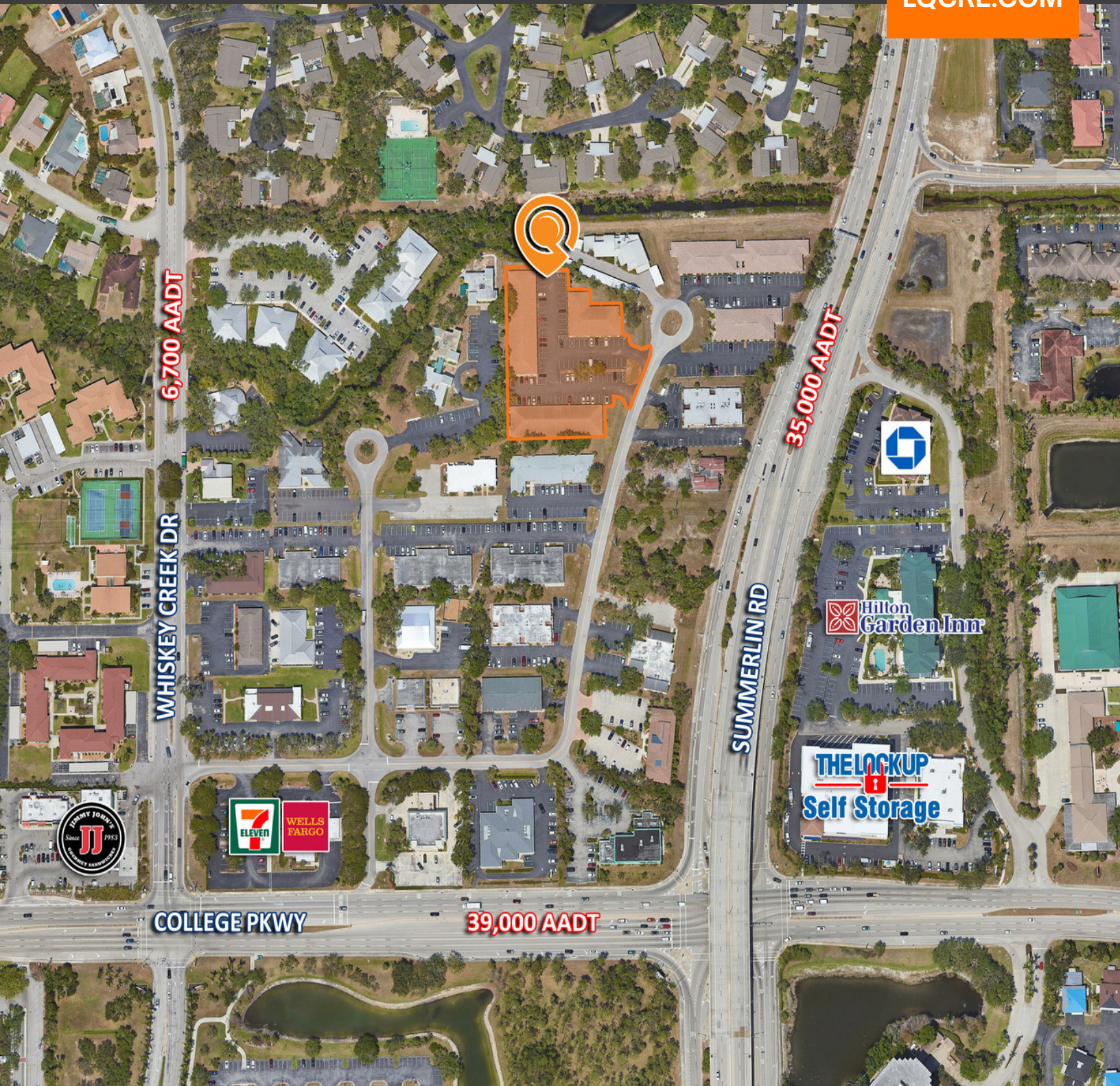
6213-6237 Presidential Court | Fort Myers, FL 33919

Office Units for Lease



**LQ Commercial**  
REAL ESTATE SERVICES

**LQCRE.COM**



**LQ Commercial**  
REAL ESTATE SERVICES

3555 Kraft Rd #260

Naples, FL 34105

**LQCRE.COM**

**Mike Concilla**

Principal

D: 239.275.4922 x405

C: 239.823.9882

[mconcilla@lqcre.com](mailto:mconcilla@lqcre.com)

**Nick Matson**

Associate

D: 239.275.4922 x408

C: 239.351.0137

[nmatson@lqcre.com](mailto:nmatson@lqcre.com)

Information obtained from owner(s) or other sources deemed reliable. We have no reason to doubt its accuracy, but cannot guarantee it. All properties subject to change or withdrawal without notice.



# PRESIDENTIAL CT I

6213-6237 Presidential Court | Fort Myers, FL 33919

Office Units for Lease



**LQ Commercial**  
REAL ESTATE SERVICES

**LQCRE.COM**

6213 Presidential Ct		3 mi radius		5 mi radius		10 mi radius	
Fort Myers, FL 33919							
Units In Structure (2025)							
Total Units	30,785		73,764		218,452		
1 Detached Unit	11,539	37.5%	32,292	43.8%	116,691	53.4%	
1 Attached Unit	3,587	11.7%	6,541	8.9%	18,284	8.4%	
2 Units	1,021	3.3%	2,278	3.1%	8,252	3.8%	
3 to 4 Units	2,425	7.9%	4,409	6.0%	9,733	4.5%	
5 to 9 Units	2,938	9.5%	6,170	8.4%	11,843	5.4%	
10 to 19 Units	3,863	12.5%	9,242	12.5%	16,525	7.6%	
20 to 49 Units	2,099	6.8%	5,681	7.7%	12,071	5.5%	
50 or More Units	2,444	7.9%	4,890	6.6%	12,552	5.7%	
Mobile Home or Trailer	843	2.7%	2,194	3.0%	12,046	5.5%	
Other Structure	27	-	67	-	455	0.2%	
Homes Built By Year (2025)							
Homes Built 2020 or later	1,407	3.6%	3,858	4.1%	11,997	4.3%	
Homes Built 2010 to 2019	2,556	6.6%	7,423	7.9%	28,543	10.3%	
Homes Built 2000 to 2009	6,660	17.1%	18,494	19.7%	60,778	21.9%	
Homes Built 1990 to 1999	4,255	10.9%	10,530	11.2%	30,657	11.0%	
Homes Built 1980 to 1989	7,521	19.3%	15,635	16.6%	43,231	15.6%	
Homes Built 1970 to 1979	5,252	13.5%	10,218	10.9%	23,463	8.4%	
Homes Built 1960 to 1969	2,319	5.9%	5,206	5.5%	13,239	4.8%	
Homes Built 1950 to 1959	460	1.2%	1,255	1.3%	3,472	1.2%	
Homes Built 1940 to 1949	299	0.8%	730	0.8%	1,993	0.7%	
Homes Built Before 1939	56	0.1%	414	0.4%	1,078	0.4%	
Median Age of Homes	34.2 yrs		32.5 yrs		30.4 yrs		
Home Values (2025)							
Owner Specified Housing Units	18,346		45,429		144,108		
Home Values \$1,000,000 or More	856	4.7%	2,436	5.4%	7,566	5.2%	
Home Values \$750,000 to \$999,999	1,182	6.4%	3,463	7.6%	10,255	7.1%	
Home Values \$500,000 to \$749,999	2,264	12.3%	7,795	17.2%	25,751	17.9%	
Home Values \$400,000 to \$499,999	2,463	13.4%	7,282	16.0%	23,339	16.2%	
Home Values \$300,000 to \$399,999	4,590	25.0%	10,456	23.0%	33,890	23.5%	
Home Values \$250,000 to \$299,999	2,189	11.9%	4,395	9.7%	13,197	9.2%	
Home Values \$200,000 to \$249,999	1,568	8.5%	2,929	6.4%	9,003	6.2%	
Home Values \$175,000 to \$199,999	555	3.0%	1,210	2.7%	3,141	2.2%	
Home Values \$150,000 to \$174,999	691	3.8%	1,319	2.9%	3,214	2.2%	
Home Values \$125,000 to \$149,999	711	3.9%	1,055	2.3%	2,619	1.8%	
Home Values \$100,000 to \$124,999	456	2.5%	999	2.2%	3,396	2.4%	
Home Values \$90,000 to \$99,999	38	0.2%	86	0.2%	365	0.3%	
Home Values \$80,000 to \$89,999	88	0.5%	193	0.4%	717	0.5%	
Home Values \$70,000 to \$79,999	47	0.3%	140	0.3%	602	0.4%	
Home Values \$60,000 to \$69,999	58	0.3%	167	0.4%	844	0.6%	
Home Values \$50,000 to \$59,999	63	0.3%	184	0.4%	1,129	0.8%	
Home Values \$35,000 to \$49,999	97	0.5%	258	0.6%	867	0.6%	
Home Values \$25,000 to \$34,999	189	1.0%	366	0.8%	1,504	1.0%	
Home Values \$10,000 to \$24,999	133	0.7%	258	0.6%	1,147	0.8%	
Home Values Under \$10,000	108	0.6%	437	1.0%	1,562	1.1%	
Owner-Occupied Median Home Value	\$355,782		\$396,824		\$395,702		
Renter-Occupied Median Rent	\$1,611		\$1,608		\$1,638		



**LQ Commercial**  
REAL ESTATE SERVICES

3555 Kraft Rd #260

Naples, FL 34105

**LQCRE.COM**

**Mike Concilla**

Principal

D: 239.275.4922 x405

C: 239.823.9882

**mconcilla@lqcre.com**

**Nick Matson**

Associate

D: 239.275.4922 x408

C: 239.351.0137

**nmatson@lqcre.com**

Information obtained from owner(s) or other sources deemed reliable. We have no reason to doubt its accuracy, but cannot guarantee it. All properties subject to change or withdrawal without notice.