



PROPERTY OVERVIEW

AREA MAP

Situated in the First Colonial medical corridor, First Colonial Medical Center is in close proximity to Sentara Virginia Beach General Hospital.

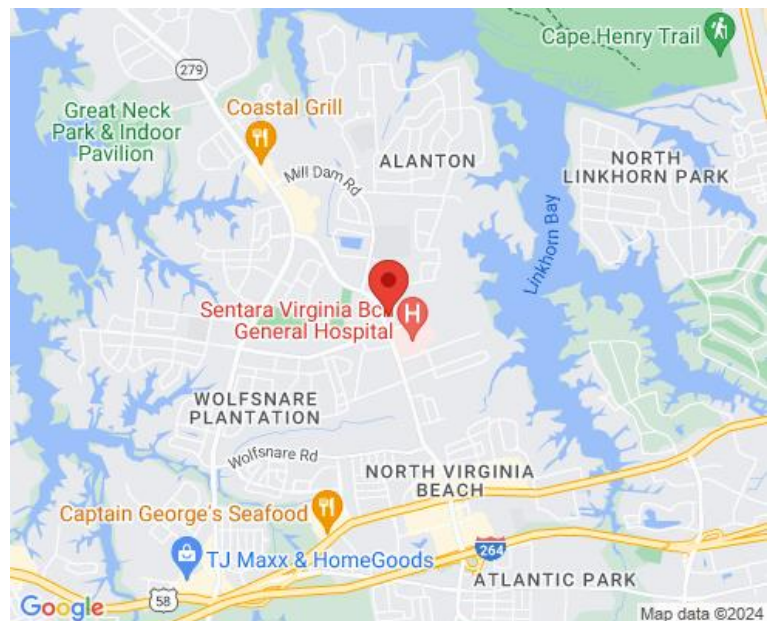
- Building signage visible from First Colonial Road
- Home of the well-established First Colonial Family Practice and Urgent Care Center
- 5.67 parking spaces per 1,000 SF
- \$19.00 PSF, full service, including utilities and janitorial

AVAILABLE:

±1,741 RSF - Former urologist office

±2,345 RSF - Available as of 7/1/24

±2,919 RSF - Available as of 8/8/24



FOR MORE INFORMATION, PLEASE CONTACT:

LENNY BURNS

(757) 490-3141

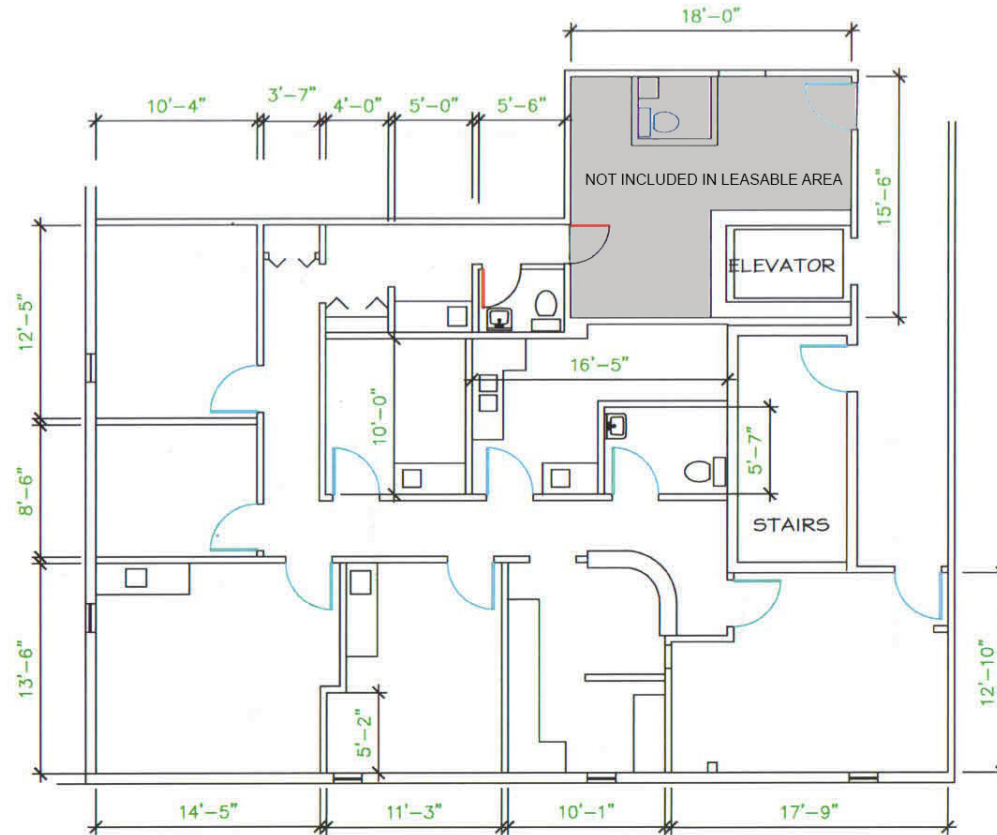
lburns@pembrokerealty.com

Pembroke Realty Group

4433 Corporation Lane, Suite 250

Virginia Beach, VA 23462

www.pembrokerealty.com



FIRST COLONIAL MEDICAL CENTER
1120 FIRST COLONIAL ROAD
VIRGINIA BEACH, VA

SUITE 200
1,583 USF / 1,741 RSF

SCALE: 1/8" = 1'-0"

JANUARY 20, 2021



FRANCIS & REEVE
1408 BLUE HERON RD.
VA. BEACH, VA 23454
757.496.5067 (OFFICE)
757.729.2929 (CELL)

FOR MORE INFORMATION, PLEASE CONTACT:

LENNY BURNS

(757) 490-3141

lburns@pembrokerealty.com

Pembroke Realty Group

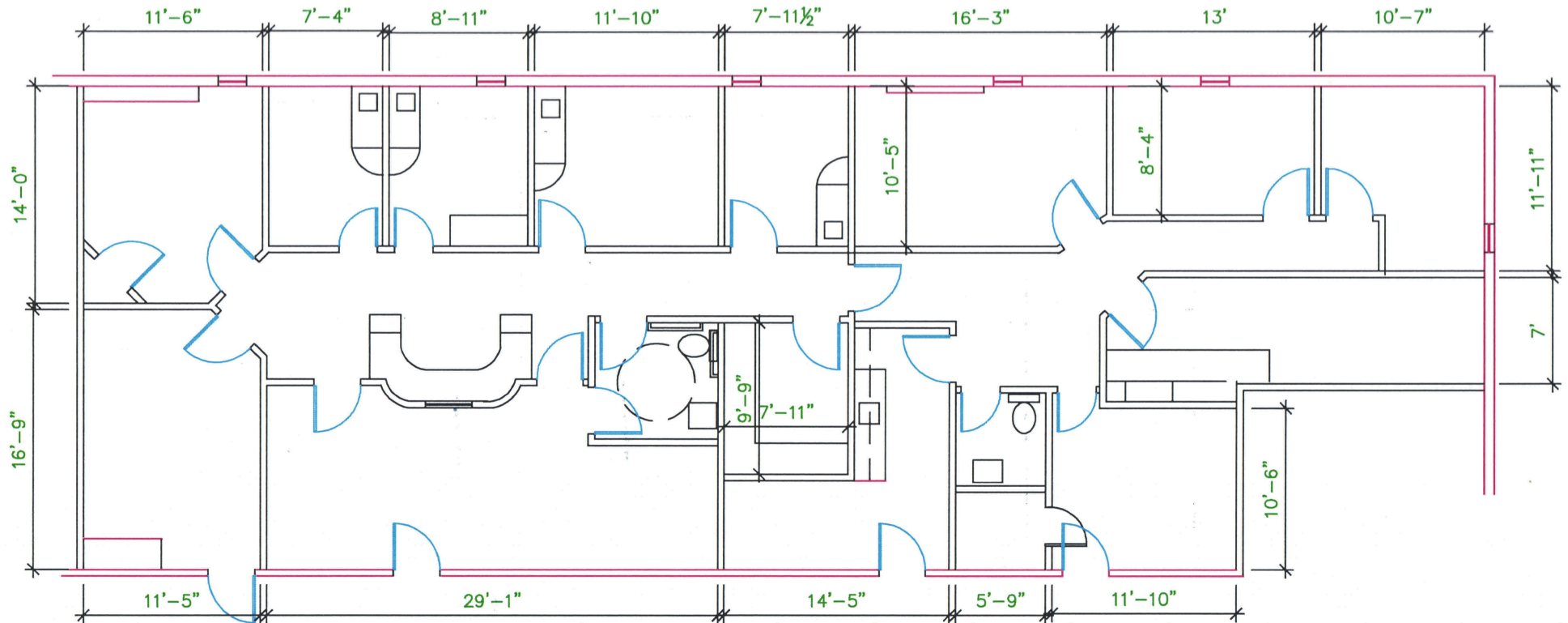
4433 Corporation Lane, Suite 250

Virginia Beach, VA 23462

www.pembrokerealty.com

First Colonial Medical Center

± 1,741 - 2,919 SF AVAILABLE



FIRST COLONIAL MEDICAL CENTER
1120 FIRST COLONIAL ROAD
VIRGINIA BEACH, VA

SUITE 203
2,654 USF / 2,919 RSF

SCALE: 1/8" = 1'-0"

DECEMBER 3, 2021



FRANCIS & REEVE
1408 BLUE HERON RD.
VA. BEACH, VA 23454
757.496.5067 (OFFICE)
757.729.2929 (CELL)

FOR MORE INFORMATION, PLEASE CONTACT:

LENNY BURNS
(757) 490-3141
lburns@pembrokerealty.com

Pembroke Realty Group
4433 Corporation Lane, Suite 250
Virginia Beach, VA 23462
www.pembrokerealty.com