

THE CONCORD CENTER INDUSTRIAL WAREHOUSE/FLEX SPACE AVAILABLE FOR LEASE: 9,805 SF



*Welcome to
The Concord Center*

formerly
The Rumford Press
1897 - 1983

10 Ferry Street | Concord, NH

The Concord Center building offers unmatched accessibility and visibility, as it is located immediately off Interstate 93, and is in close proximity to restaurants, banks, hotels, and much more. This mill-style building formerly occupied by the Rumford Press, offers a wide range of options, from a single office, to large warehouse space. In addition to including on-site maintenance and cleaning, tenants also enjoy use of on-site amenities including a full-service café, fitness center and conference room.

Specifications:

TYPE OF CENTER:

Warehouse/Office

GROSS LEASABLE AREA:

173,445

PARKING:

Ample on-site parking

FIRE PROTECTION:

Fully Sprinklered

HVAC:

Natural Gas-Fired Modine

CLEAR HEIGHT:

Suite 121: 12' - 15'

FIBER:

Fairpoint/Comcast

SEWER/WATER:

City of Concord

POWER:

Unutil

GAS:

Liberty Utilities

Amenities:

Prominent location in Concord's Business District

On-site Café

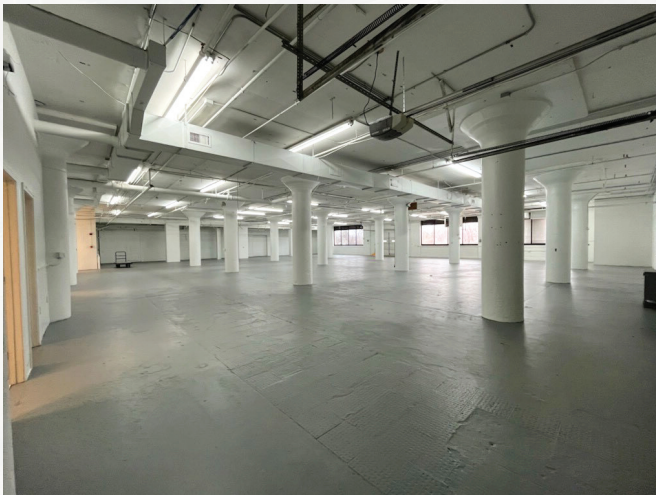
Free Gym Facility

Over 500 Free Parking Spaces

On-Site Maintenance Staff

Recently upgraded common areas

Direct Access to Major Highways & Close Proximity to Manchester-Boston Airport

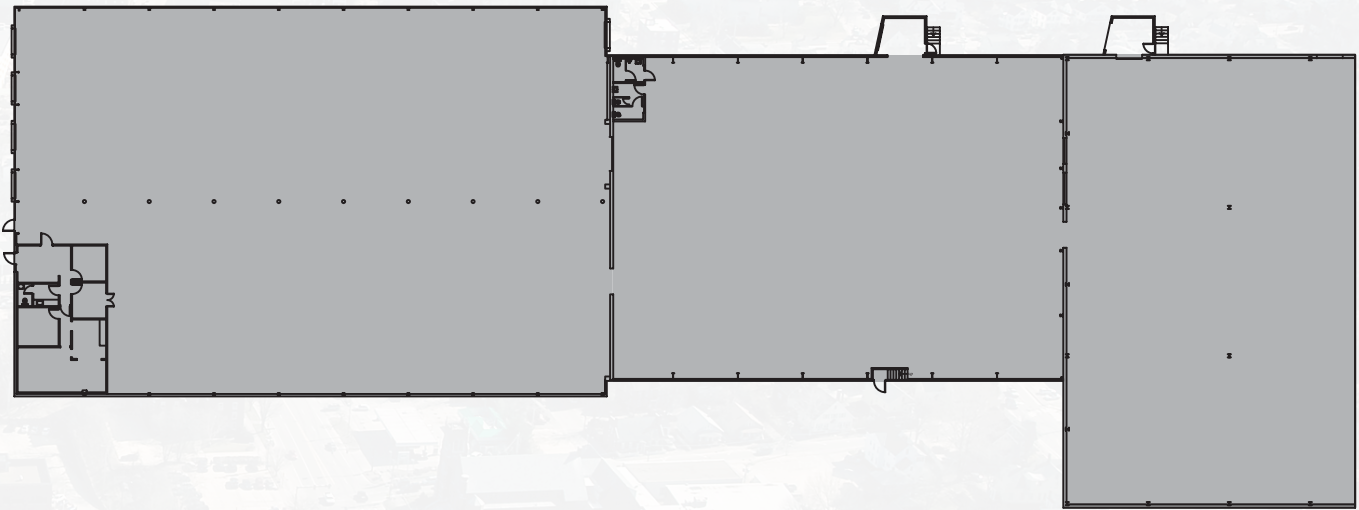


Availabilities:

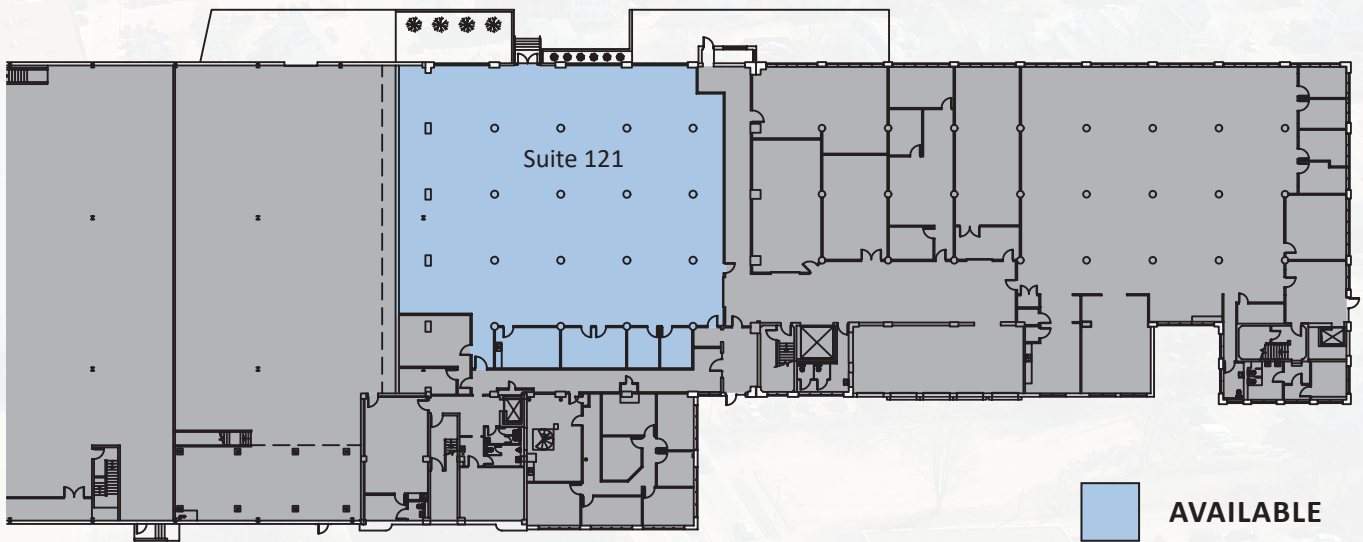
Suite 121: 9,805 SF



First Floor North



First Floor South



 AVAILABLE
 LEASED



LOCAL AMENITIES

RESTAURANTS:

- 1 Papa John's Pizza
- 2 Margaritas
- 3 UNO Chicago Grill
- 4 Domino's
- 5 Panera Bread/B.Good
- 6 Saim Orchid
- 7 The Barley House
- 8 Tea Garden
- 9 The Common Man

LODGING/SHOPS:

- 10 Centennial Hotel
- 11 Fairfield Inn
- 12 The Hotel Concord
- 13 Residence Inn
- 14 Comfort Inn & Suites
- 15 Holiday Inn
- 16 L.L. Bean
- 17 Market Basket

SERVICES:

- 18 TD Bank
- 19 Bank of New Hampshire
- 20 Bank of America
- 21 Eastern Bank
- 22 The UPS Store
- 23 US Post Office
- 24 FedEx
- 25 YMCA
- 26 Capital Center for the Arts

JOHNFLATLEY
Company

**For more information,
or to schedule a tour, please contact:**

Tom Maregni
Direct 781.917.5306
Office 781.380.7731
thomas.maregni@johnflatleyco.com

**Corporate Headquarters | 45 Dan Rd, Suite 320, Canton, MA 02021 | 781.380.7731
www.johnflatleyco.com | info@johnflatleyco.com**