

Office ★ LEASE

LanCarte.com

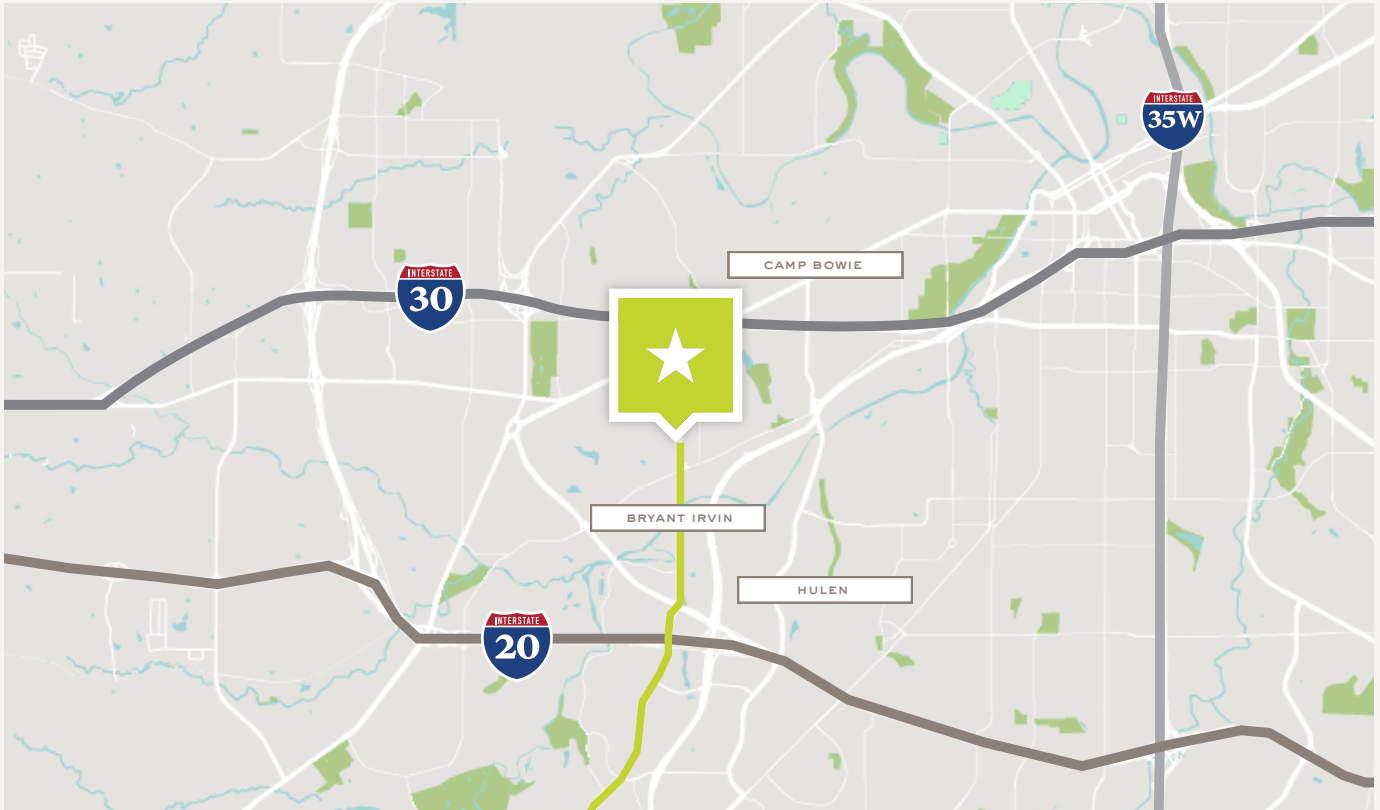
4775 BRYANT COURT RD, FORT WORTH, TX



Sarah LanCarte
CCIM, SIOR
817-228-4247
sarah@lancarte.com

Finn Wilson
817-713-8771
fwilson@lancarte.com

Riley Dean
817-992-2362
rdeann@lancarte.com



PROPERTY FEATURES

- Estimated delivery in Q2 2027
- Suite can be divided
- Under Construction/Class A Building
- Building Size: 10,000 SF

AVAILABLE SPACES

SUITE 100 **2,000-4,348 SF**

LOCATION OVERVIEW

Located in an established professional corridor in Southwest Fort Worth, the property offers convenient access to Chisholm Trail Parkway, Bryant Irvin Road, and US-183. With traffic counts exceeding 20,000 vehicles per day along Bryant Irvin Road, the site provides strong visibility, regional connectivity, and proximity to nearby retail, dining, and residential neighborhoods.

LEASING STRUCTURE

CONTACT BROKER

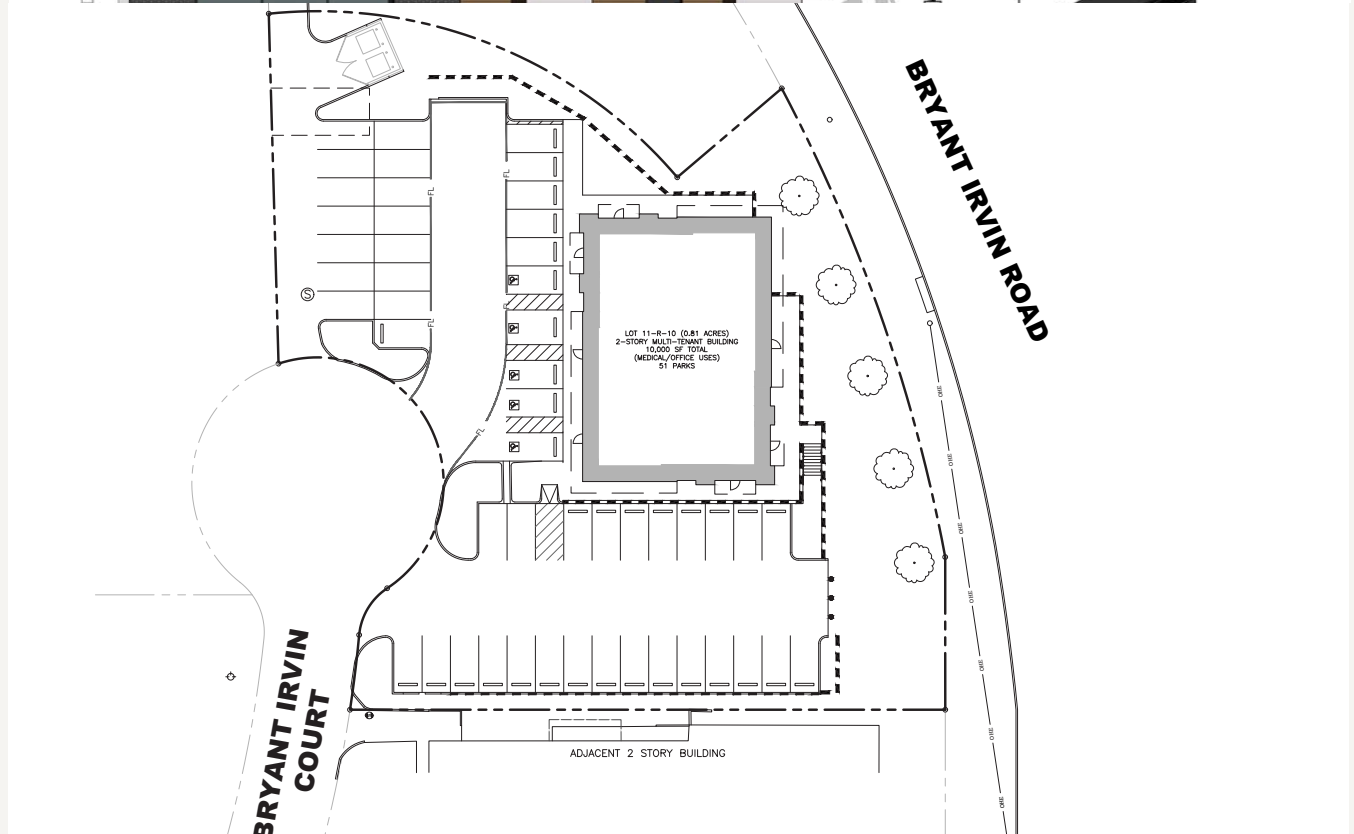
Office ★ LEASE
4775 BRYANT COURT

LanCarte.com

RENDERING & SITE PLAN



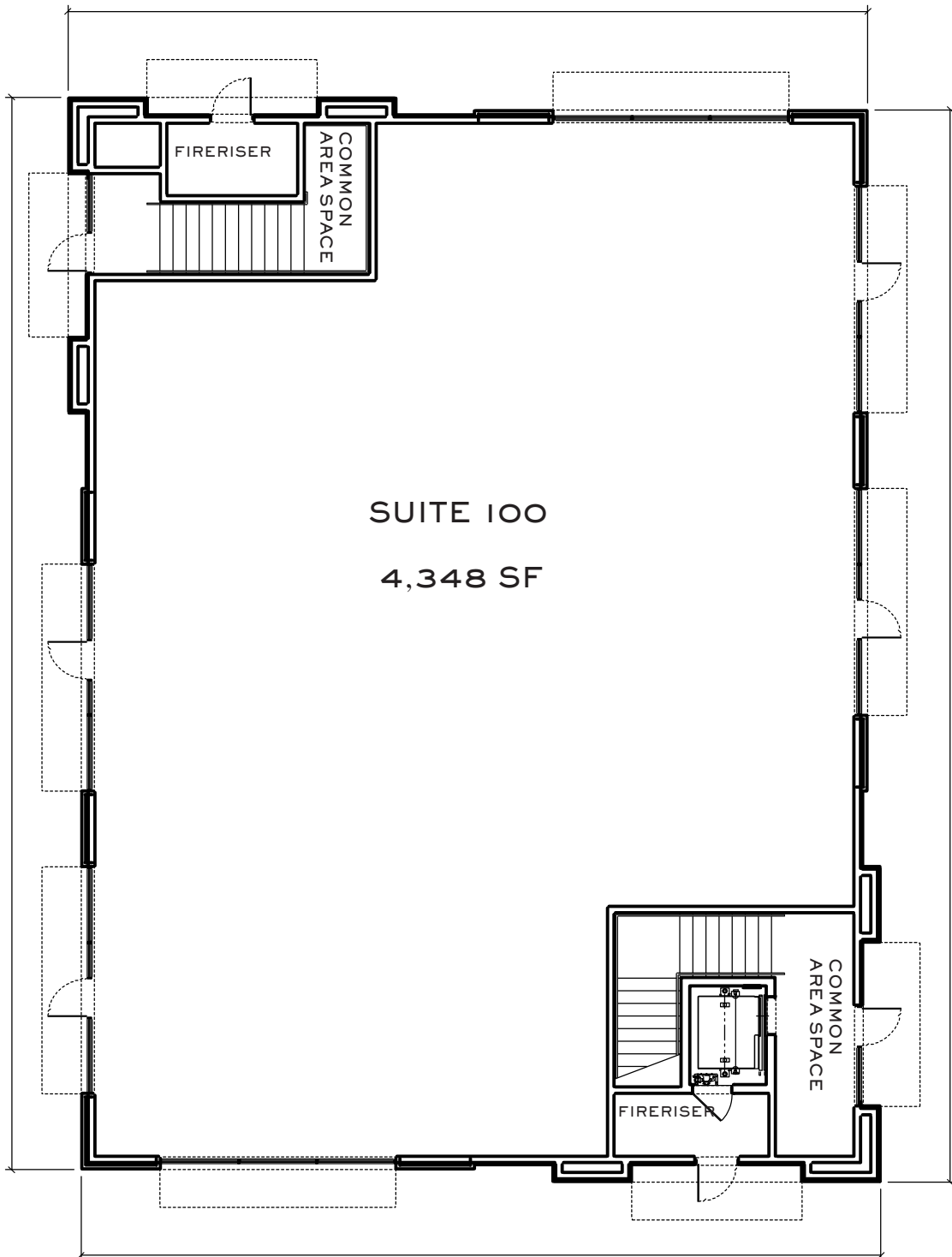
1 - FRONT/BACK ELEVATIONS SCALE 1/8"=1'-0"



Office ★ LEASE
4775 BRYANT COURT

LanCarte.com

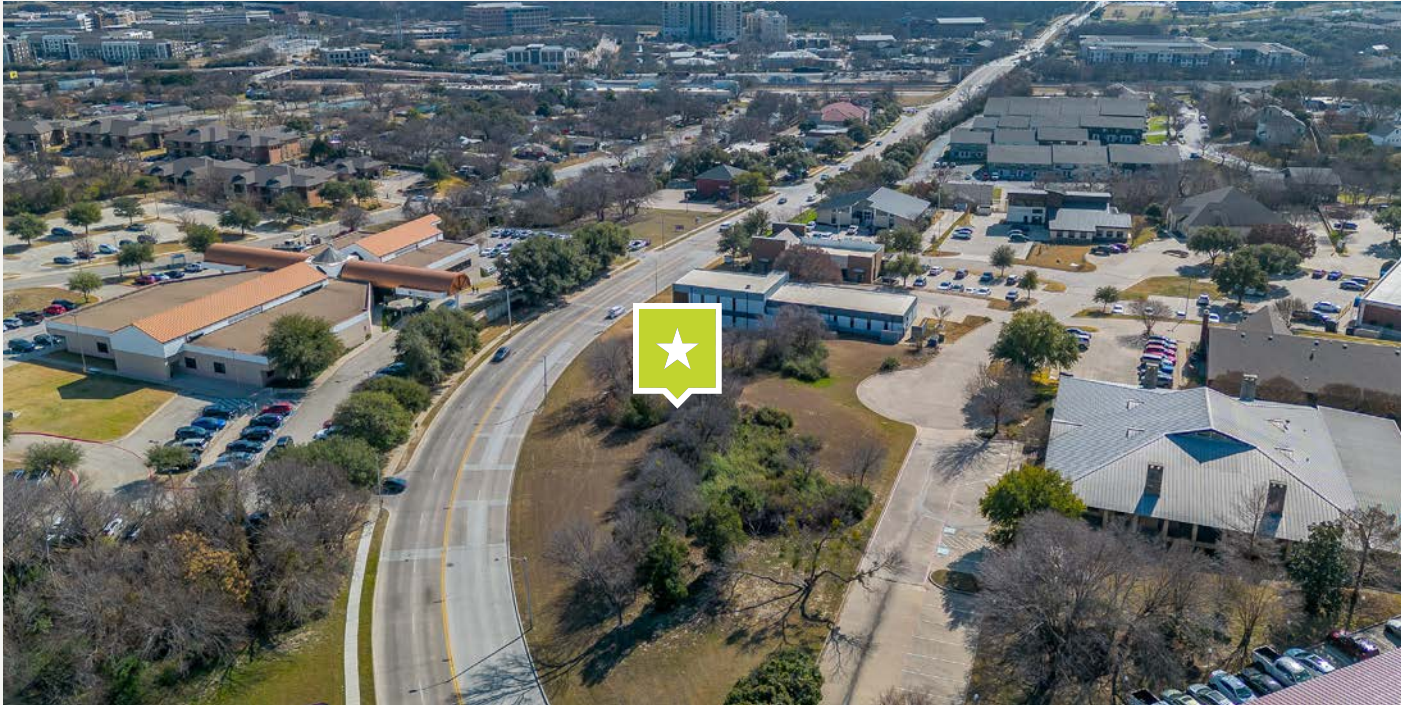
FLOOR PLAN



Office ★ LEASE
4775 BRYANT COURT

LanCarte.com

EXTERIOR





LANCARTE
COMMERCIAL
BROKERAGE ★ PROPERTY MANAGEMENT

Relentlessly Pursuing What Matters

Sarah LanCarte
CCIM, SIOR
817-228-4247
sarah@lancarte.com

Finn Wilson
817-713-8771
fwilson@lancarte.com

Riley Dean
817-992-2362
rdeann@lancarte.com

The information provided herein was obtained from sources believed to be reliable. However, LanCarte Commercial makes no guaranties, warranties or representations as to the completeness or accuracy thereof. The presentation of this property is submitted subject to errors, omissions, change of price or conditions, prior to sale or lease, or withdrawal without notice. Copyright 2026 LanCarte Commercial Real Estate, LLC.