



SPACES AVAILABLE FOR LEASE

Suite 206	1,000sf	\$16.00 psf/Yr., NNN
Suite 210	1,000sf	\$15.00 psf/Yr., NNN
Suite 212	2,000sf	\$15.00 psf/Yr., NNN

- Large, light and bright end-cap office and retail spaces available located within a busy mixed use property.
- Conveniently located at the intersection of Martin Way E. and Duterrow with two easy access points into the center. Ideally situated minutes from I-5 with 127,000 VPD.
- Great signage placement available on highly visible monument signage along with abundant Parking.
- All spaces are fully built-out with high-end finishes and Suite 210 may be combined with Suite 212 for a total of 3,000 square feet.
- **TENANT IMPROVEMENT ALLOWANCE AVAILABLE FOR TERM AND CREDIT WORTHY TENANT.**
- Call Broker to obtain more info. and to schedule a tour!

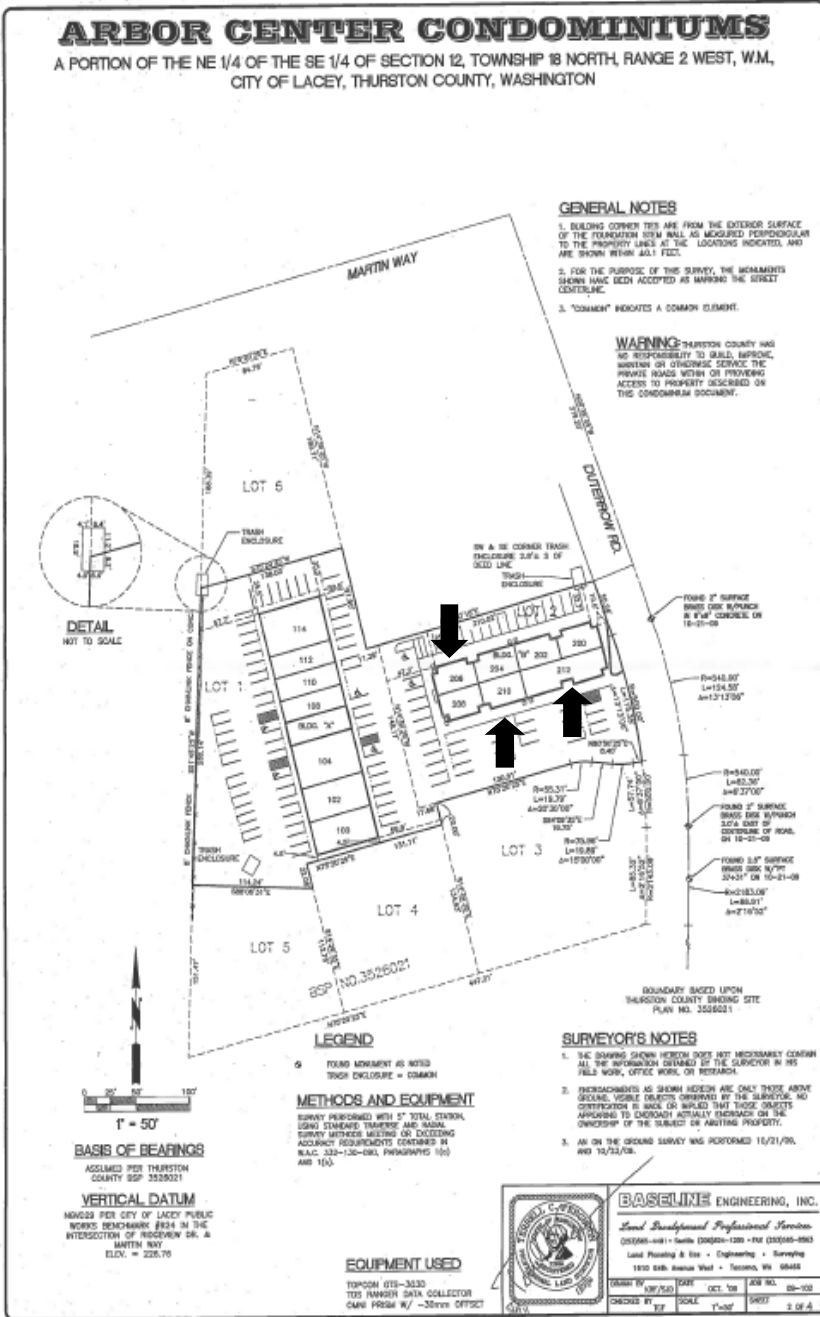
Listing Broker:

Syd Severe

Cell: 425.495.1353



Demographics	1 MILE	3 MILES	5 MILES
2024 Population:	38,155	168,256	428,271
2024 Average Household Income:	\$82,528	\$98,633	\$128,286



Listing Broker:

Syd Severe

Cell: 425.495.1353

Email: syd@mkps.net