



For Lease

3633 Highway 30,
Pocatello, ID 83201

Jared Zebe
208 709 7311
jared.zebe@colliers.com

Mike Zebe
208 705 6453
mike.zebe@colliers.com

Don Zebe
208 403 1973
don.zebe@colliers.com

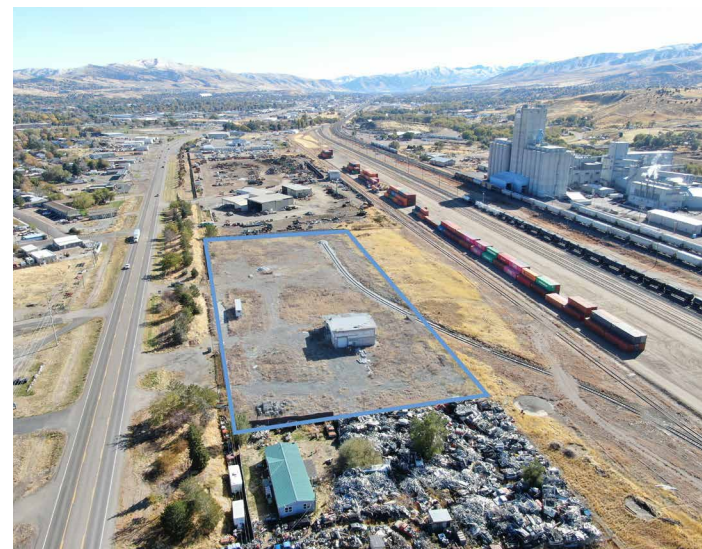
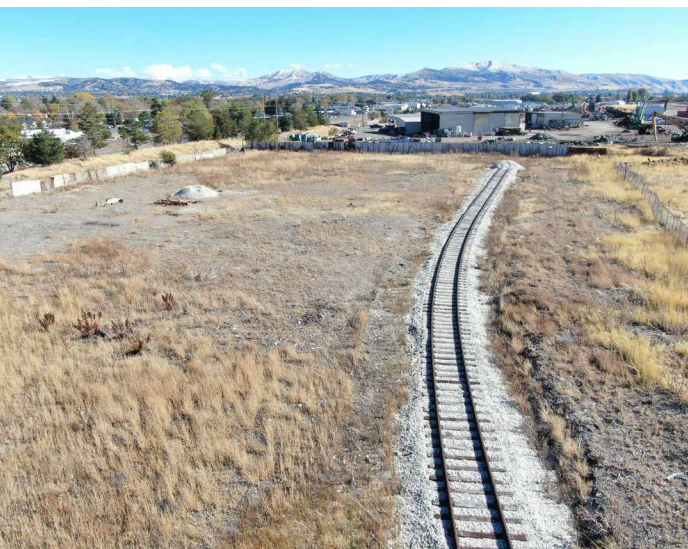
Property Overview

Property Type	Land
Land Size	4.5 Acres
Zoning	Light Industrial
Yard	Fenced
Rail Service	Yes
Lease Rate	Contact Agents
Property Access	Contact Agents

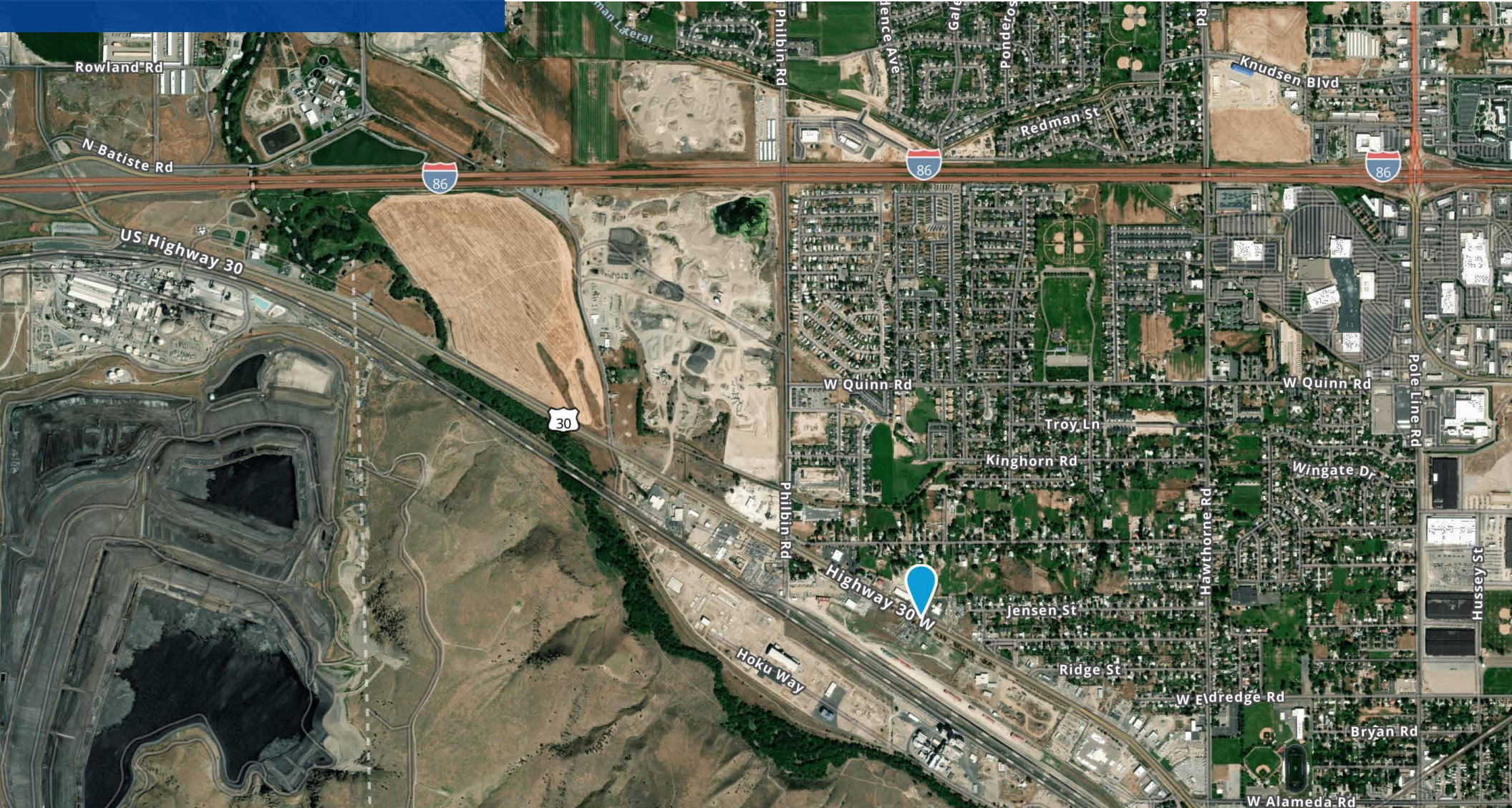
Key Highlights

- Rail Spur (Active)
- 4.5 Fenced Acres
- Easy Access
- On US HWY 30





Location



2043 E Center Street
Pocatello, Idaho 83201
208 951 2100
colliers.com/idaho

This document has been prepared by Colliers for advertising and general information only. Colliers makes no guarantees, representations or warranties of any kind, expressed or implied, regarding the information including, but not limited to, warranties of content, accuracy and reliability. Any interested party should undertake their own inquiries as to the accuracy of the information. Colliers excludes unequivocally all inferred or implied terms, conditions and warranties arising out of this document and excludes all liability for loss and damages arising there from. This publication is the copyrighted property of Colliers and /or its licensor(s). © 2024. All rights reserved. This communication is not intended to cause or induce breach of an existing listing agreement. Colliers Portneuf Valley, LLC.