

FOR SALE

MEDICAL OFFICE BUILDING



**555 Bluebird Boulevard
Fort Valley-Peach County, Georgia 31030**

STEPHANIE FOLSOM, CCIM

O. 478.746.8171

C. 478.361.8259

STEPHANIE@CBCGEORGIA.COM

CBCMACON.COM

SALES PRICE: \$750,000



**COLDWELL BANKER
COMMERCIAL**

EBERHARDT & BARRY

©2026 Coldwell Banker. All Rights Reserved. Coldwell Banker Commercial® and the Coldwell Banker Commercial logo are trademarks of Coldwell Banker Real Estate LLC. The Coldwell Banker® System is comprised of company owned offices which are owned by a subsidiary of Anywhere Advisors LLC and franchised offices which are independently owned and operated. The Coldwell Banker System fully supports the principles of the Equal Opportunity Act. The information provided herein is deemed reliable, but it is not guaranteed to be accurate or complete, and it should not be relied upon as such. The information herein should be independently verified before any person enters into a transaction based upon it.

Created 4/22/26



PROPERTY OVERVIEW

- **Building Size:** 4,565± SF
- **Drive-through porte-cochere**
- **On-site storage building** (±12' X 32')
- **Ceiling Height:** 10± Feet
- **Roof:** 2± Years old
- **Parking Spaces:** 29± paved
- **Parking Lot:** professionally sealed and striped 2± years ago
- **Lot Size:** 1.13± Acres
- **Year Built:** 1992
- **Construction:** Brick veneer
- **Zoning:** I-N (Institutional)

Interior Layout:

- Reception area with **spacious waiting room**
- **Six exam rooms**
- **Procedure room and lab**
- **Triage area and nurses station**
- **Physician's office with private restroom**
- **Three additional private offices**
- **Break room**
- **Computer and mechanical rooms**
- **Two restrooms**
- **Two storage rooms**

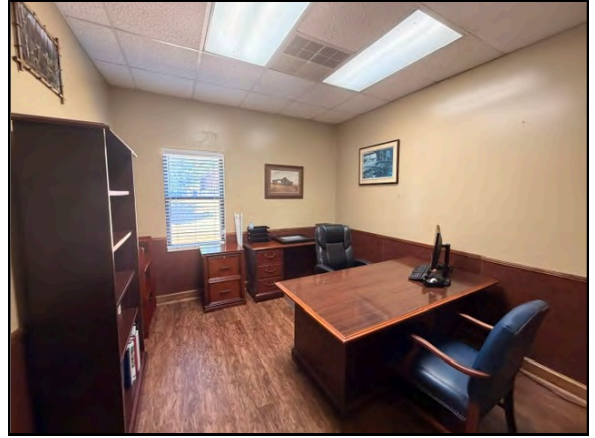
SALES PRICE: \$750,000

LOCATION OVERVIEW

- Positioned in the center of Georgia's largest peach-producing region
- Just 10 minutes from Interstate 75, providing regional connectivity
- Easy access via Georgia State Routes 49 and 96 and US Route 341
- Located directly across from Blue Bird Corporation, a major regional employer
- Surrounded by established medical offices and healthcare providers
- Strong local workforce base supported by manufacturing and agriculture
- Convenient access to Macon and the Central Georgia region

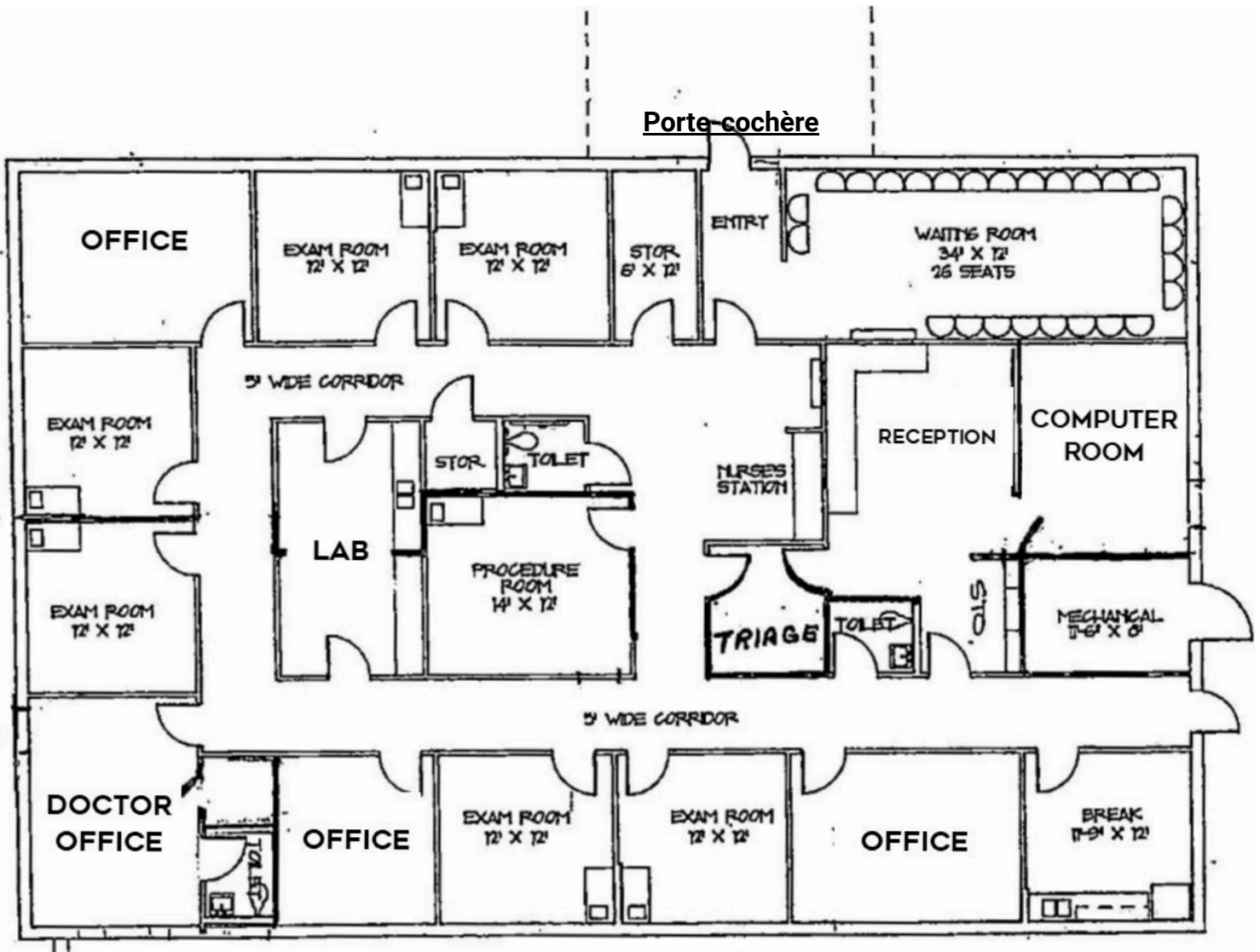


Stephanie Folsom, CCIM
478.361.8259 Cell
stephanie@cbcgeorgia.com
cbcmacon.com



Stephanie Folsom, CCIM
478.361.8259 Cell
stephanie@cbcgeorgia.com
cbcmacon.com

FLOOR PLAN





Stephanie Folsom, CCIM
478.361.8259 Cell
stephanie@cbcgeorgia.com
cbcmacon.com

