

Likewise



# For Sale or Lease

**4,014 SF PROFESSIONAL OFFICE CONDO**

**120-C Chadwick Square Court, Hendersonville, NC 28739**

**Likewise**  
COMMERCIAL REAL ESTATE

**James Diaz, CCIM** LISTING BROKER

828.215.9669 | [jjm@likewisecommercial.com](mailto:jjm@likewisecommercial.com) | [likewisecommercial.com](http://likewisecommercial.com)



120-C Chadwick Square Court, Hendersonville, NC 28739



## OFFERING SUMMARY

SALE PRICE \$995,000

LEASE PRICE \$15 /SF NNN

UNIT SIZE ± 4,014 SF

## PROPERTY FEATURES

- Available for Sale or Lease
- Professional office condo, just south of Main Street in downtown Hendersonville
- 12 private offices, waiting room, reception desk, multiple restrooms, and a break room with a kitchenette
- Spacious shared parking lot with covered parking below the building
- Elevator access to the unit
- Fast-growing area, surrounded by both local and national retailers
- Ideal space for professional office
- MLS# 4308284



**Likewise**  
COMMERCIAL REAL ESTATE

**James Diaz, CCIM** LISTING BROKER

828.215.9669 | jim@likewisecommercial.com | likewisecommercial.com

**CCIM**

We obtained the information above from sources we believe to be reliable. However, we have not verified its accuracy and make no guarantee, warranty or representation about it. It is submitted subject to the possibility of errors, omissions, change of price, rental or other conditions, prior sale, lease or financing, or withdrawal without notice. We include projections, opinions, assumptions or estimates for example only, and they may not represent current or future performance of the property. You and your tax and legal advisors should conduct your own investigation of the property and transaction.

120-C Chadwick Square Court, Hendersonville, NC 28739

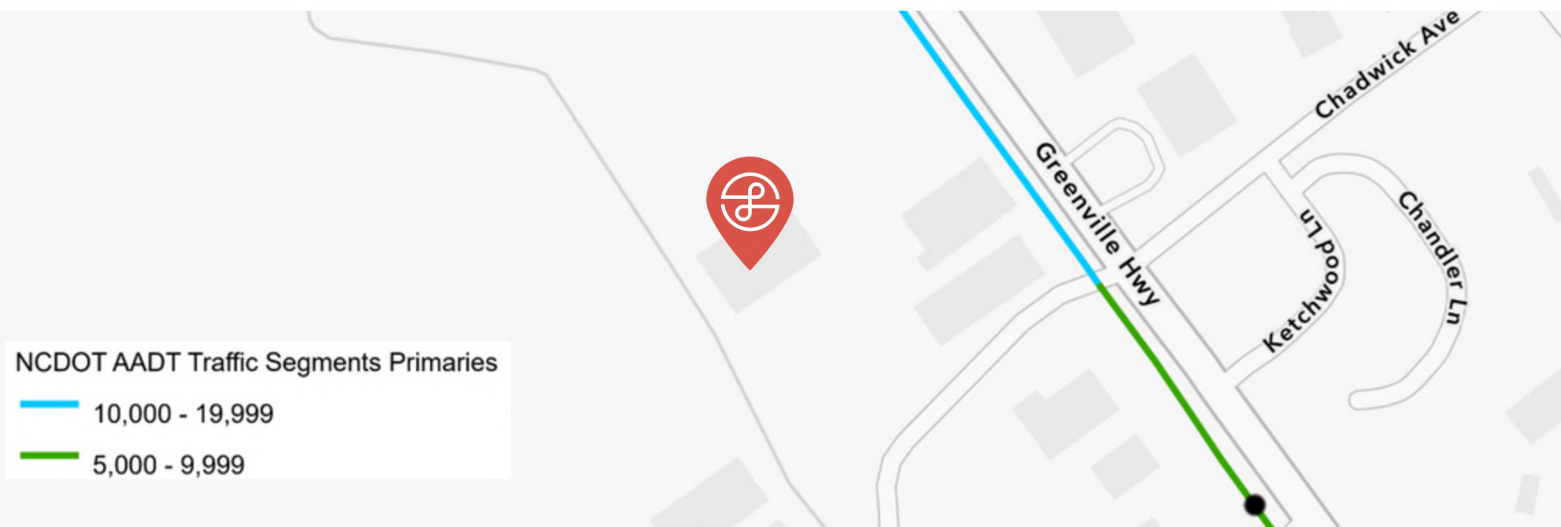


## LOCATION INFORMATION

PIN	9568-83-5096.003
COUNTY	Henderson
ZONING	C-3SU
MAJOR ROADS	US 25/Greenville Hwy, US 176/Spartanburg Hwy

## PROPERTY DETAILS

UNIT SIZE	4,014 SF
YEAR BUILT	2004
TRAFFIC COUNT	Up to 19,000 VPD
FLOOD ZONE	Yes
VACANCY	Available January 1 <sup>st</sup> , 2026



**Likewise**  
COMMERCIAL REAL ESTATE

**James Diaz, CCIM** LISTING BROKER  
828.215.9669 | jim@likewisecommercial.com | likewisecommercial.com



We obtained the information above from sources we believe to be reliable. However, we have not verified its accuracy and make no guarantee, warranty or representation about it. It is submitted subject to the possibility of errors, omissions, change of price, rental or other conditions, prior sale, lease or financing, or withdrawal without notice. We include projections, opinions, assumptions or estimates for example only, and they may not represent current or future performance of the property. You and your tax and legal advisors should conduct your own investigation of the property and transaction.



120-C Chadwick Square Court, Hendersonville, NC 28739



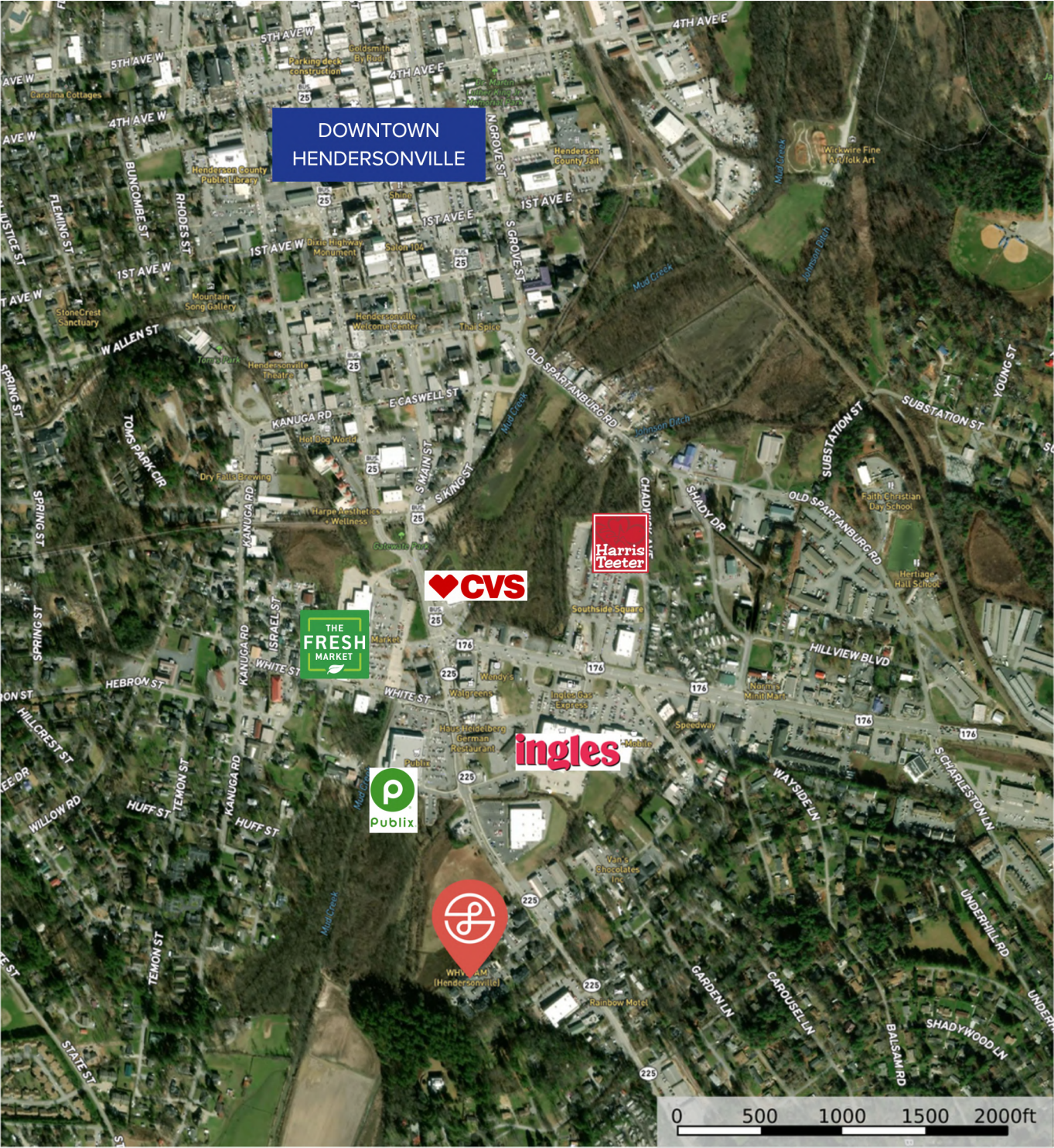
**Likewise**  
COMMERCIAL REAL ESTATE

**James Diaz, CCIM** LISTING BROKER

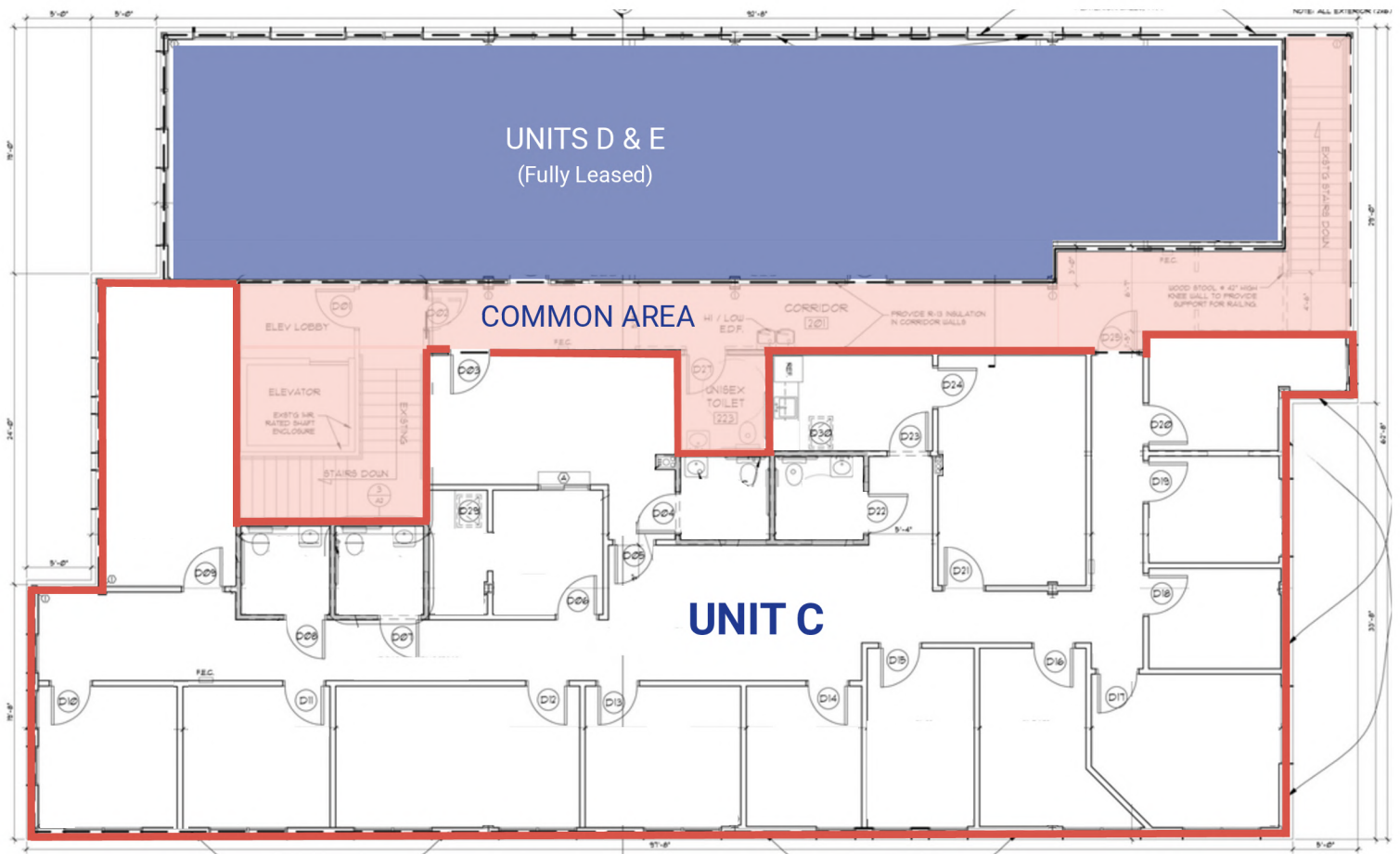
828.215.9669 | [jim@likewisecommercial.com](mailto:jim@likewisecommercial.com) | [likewisecommercial.com](http://likewisecommercial.com)



We obtained the information above from sources we believe to be reliable. However, we have not verified its accuracy and make no guarantee, warranty or representation about it. It is submitted subject to the possibility of errors, omissions, change of price, rental or other conditions, prior sale, lease or financing, or withdrawal without notice. We include projections, opinions, assumptions or estimates for example only, and they may not represent current or future performance of the property. You and your tax and legal advisors should conduct your own investigation of the property and transaction.



\*BUSINESS LOCATIONS NOT EXACT

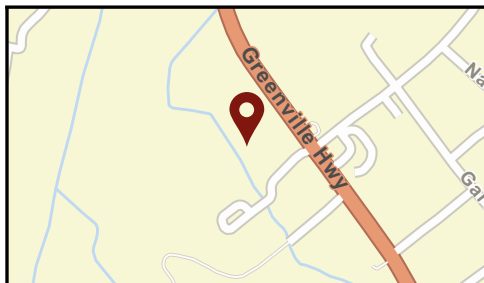
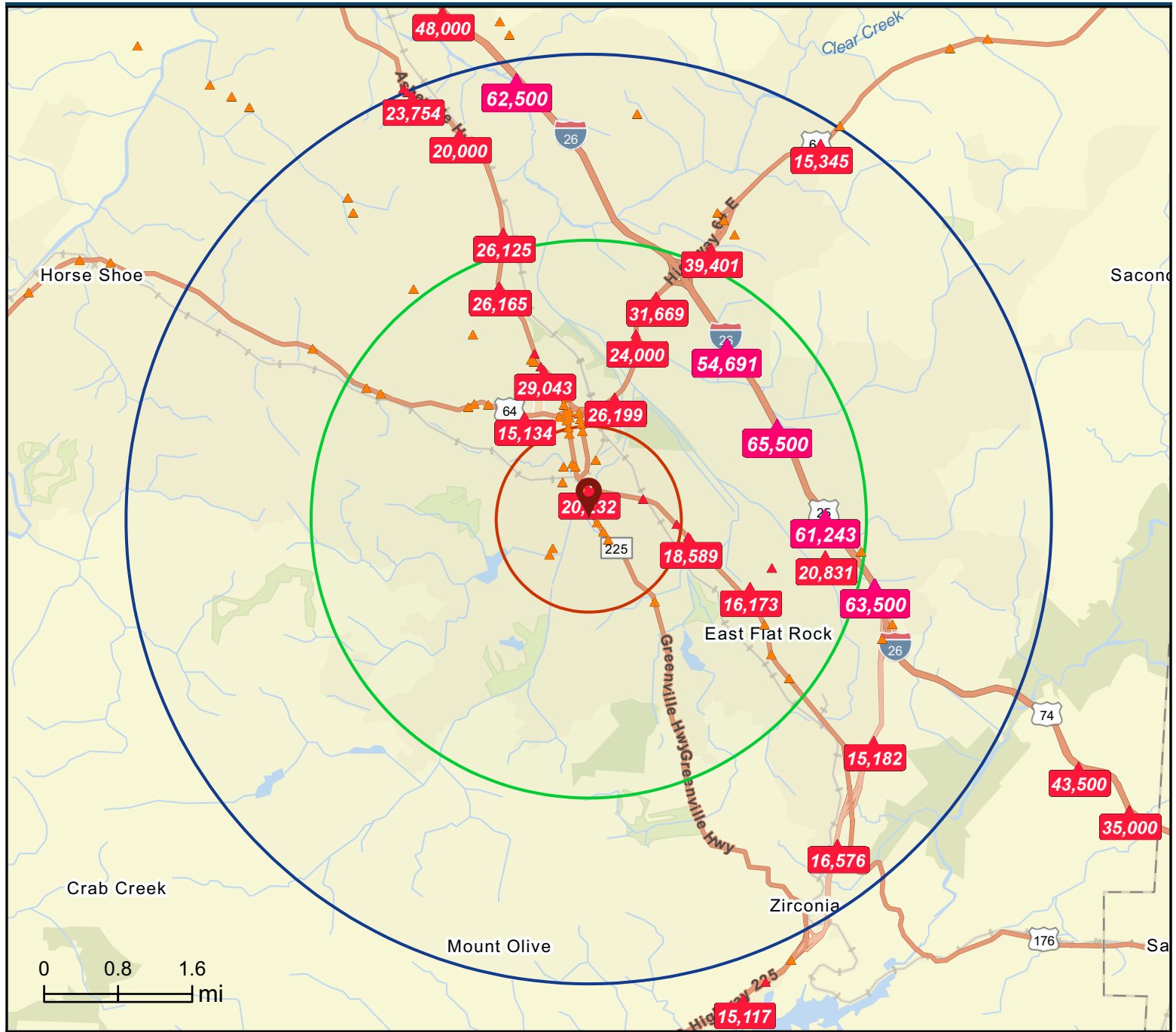


UNIT C: 4,014 SF

## Traffic Count Map

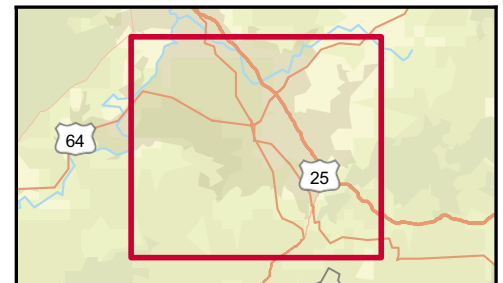
120 Chadwick Square Ct, Hendersonville, North Carolina,  
Rings: 1, 3, 5 mile radii

Prepared by Esri  
Latitude: 35.30270  
Longitude: -82.45768



### Average Daily Traffic Volume

- ▲ Up to 6,000 vehicles per day
- ▲ 6,001 - 15,000
- ▲ 15,001 - 30,000
- ▲ 30,001 - 50,000
- ▲ 50,001 - 100,000
- ▲ More than 100,000 per day



Source: ©2025 Kalibrate Technologies (Q1 2025).

October 08, 2025

# Key Facts

120 Chadwick Square Ct, Hendersonville, North Carolina,  
28739

Ring: 1 mile radius

## KEY FACTS

5,777

Population



2.1

Average  
Household Size

44.9

Median Age

\$56,497

Median Household  
Income

## EDUCATION

8.5%

No High School  
Diploma



23.0%

High School  
Graduate



32.2%

Some College/  
Associate's Degree



36.3%

Bachelor's/Grad/  
Prof Degree

## BUSINESS



815

Total Businesses



6,279

Total Employees

## EMPLOYMENT



57.4%

White Collar



22.4%

Blue Collar



20.3%

Services



0.5%

Unemployment  
Rate

## INCOME



\$56,497

Median Household  
Income



\$32,733

Per Capita Income



\$106,990

Median Net Worth

## 2025 Households by income (Esri)

The largest group: \$50,000 - \$74,999 (23.9%)

The smallest group: \$150,000 - \$199,999 (2.5%)

Indicator ▲	Value	Diff		
<\$15,000	8.1%	+3.2%		
\$15,000 - \$24,999	11.2%	+5.3%		
\$25,000 - \$34,999	10.4%	+0.9%		
\$35,000 - \$49,999	11.7%	-3.2%		
\$50,000 - \$74,999	23.9%	+2.8%		
\$75,000 - \$99,999	14.0%	+1.4%		
\$100,000 - \$149,999	14.2%	-0.5%		
\$150,000 - \$199,999	2.5%	-6.1%		
\$200,000+	4.0%	-3.8%		

Bars show deviation from Henderson County

# Key Facts

120 Chadwick Square Ct, Hendersonville, North Carolina,  
28739

Ring: 3 mile radius

## KEY FACTS

31,756

Population



2.1

Average  
Household Size

50.2

Median Age

\$59,379

Median Household  
Income

## EDUCATION

7.7%

No High School  
Diploma



23.7%

High School  
Graduate



27.9%

Some College/  
Associate's Degree



40.8%

Bachelor's/Grad/  
Prof Degree

## BUSINESS



2,365

Total Businesses



26,772

Total Employees

## EMPLOYMENT



White Collar

56.9%



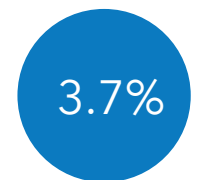
Blue Collar

22.3%



Services

20.8%



Unemployment  
Rate

## INCOME



\$59,379

Median Household  
Income



\$38,794

Per Capita Income



\$189,360

Median Net Worth

## 2025 Households by income (Esri)

The largest group: \$50,000 - \$74,999 (21.7%)

The smallest group: \$200,000+ (6.6%)

Indicator ▲	Value	Diff		
<\$15,000	6.7%	+1.8%		
\$15,000 - \$24,999	7.5%	+1.6%		
\$25,000 - \$34,999	11.4%	+1.9%		
\$35,000 - \$49,999	14.0%	-0.9%		
\$50,000 - \$74,999	21.7%	+0.6%		
\$75,000 - \$99,999	12.3%	-0.3%		
\$100,000 - \$149,999	12.6%	-2.1%		
\$150,000 - \$199,999	7.2%	-1.4%		
\$200,000+	6.6%	-1.2%		

Bars show deviation from Henderson County

# Key Facts

120 Chadwick Square Ct, Hendersonville, North Carolina,  
28739

Ring: 5 mile radius

## KEY FACTS

58,527

Population



Average  
Household Size

50.6

Median Age

\$62,196

Median Household  
Income

## EDUCATION

7.9%

No High School  
Diploma



23.7%

High School  
Graduate



29.1%

Some College/  
Associate's Degree



39.2%

Bachelor's/Grad/  
Prof Degree

## BUSINESS



3,004

Total Businesses



33,594

Total Employees

## EMPLOYMENT



White Collar

56.2%



Blue Collar

22.8%



Services

20.9%



Unemployment  
Rate

## INCOME



\$62,196

Median Household  
Income



\$39,813

Per Capita Income



\$230,804

Median Net Worth

## 2025 Households by income (Esri)

The largest group: \$50,000 - \$74,999 (22.1%)

The smallest group: <\$15,000 (5.6%)

Indicator ▲	Value	Diff		
<\$15,000	5.6%	+0.7%		
\$15,000 - \$24,999	6.5%	+0.6%		
\$25,000 - \$34,999	10.7%	+1.2%		
\$35,000 - \$49,999	14.3%	-0.6%		
\$50,000 - \$74,999	22.1%	+1.0%		
\$75,000 - \$99,999	12.7%	+0.1%		
\$100,000 - \$149,999	13.1%	-1.6%		
\$150,000 - \$199,999	7.8%	-0.8%		
\$200,000+	7.0%	-0.8%		

Bars show deviation from Henderson County

# Demographic and Income Profile

120 Chadwick Square Ct, Hendersonville, North Carolina, 28739



Ring: 1 mile radius

Summary	Census 2020	2025	2030
Total Population	5,692	5,777	5,854
Total Households	2,558	2,627	2,689
Family Households	1,431	1,422	1,440
Average Household Size	2.13	2.11	2.09
Owner Occupied Housing Units	1,389	1,440	1,551
Renter Occupied Housing Units	1,169	1,187	1,138
Median Age	43.9	44.9	46.5

Trends 2025 - 2030	Area	State	National
Population	0.3%	0.8%	0.4%
Households	0.5%	1.1%	0.6%
Family Population	0.3%	0.9%	0.5%
Owner Occupied Housing Units	1.5%	1.2%	0.0%
Median Household Income	1.8%	2.6%	2.5%

Households by Income	2025		2030	
	Number	Percent	Number	Percent
Less than \$15,000	212	8.1%	192	7.1%
\$15,000-\$24,999	294	11.2%	250	9.3%
\$25,000-\$34,999	274	10.4%	234	8.7%
\$35,000-\$49,999	308	11.7%	298	11.1%
\$50,000-\$74,999	628	23.9%	652	24.3%
\$75,000-\$99,999	367	14.0%	395	14.7%
\$100,000-\$149,999	374	14.2%	445	16.6%
\$150,000-\$199,999	65	2.5%	86	3.2%
\$200,000 or greater	104	4.0%	137	5.1%
Median Household Income	\$56,497	-	\$61,620	-
Average Household Income	\$72,764	-	\$80,049	-
Per Capita Income	\$32,733	-	\$36,362	-

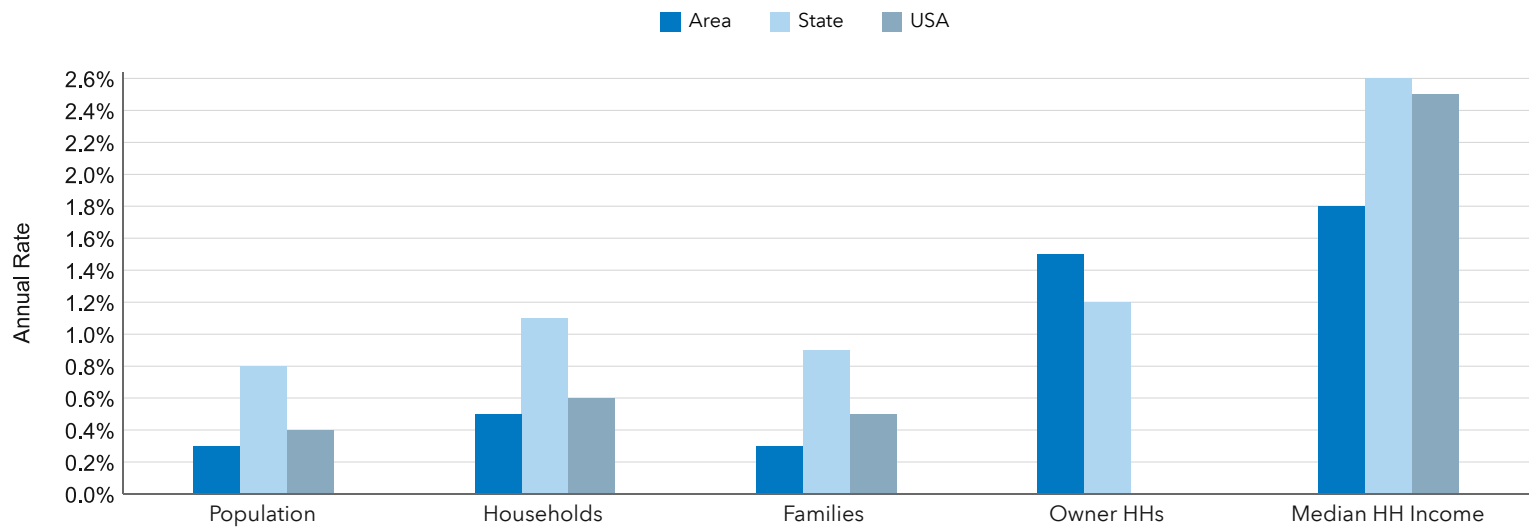
Population by Age	Census 2020		2025		2030	
	Number	Percent	Number	Percent	Number	Percent
0-4	259	4.5%	256	4.4%	247	4.2%
5-9	300	5.3%	252	4.4%	243	4.2%
10-14	323	5.7%	298	5.2%	254	4.3%
15-19	264	4.6%	321	5.6%	295	5.0%
20-24	273	4.8%	324	5.6%	387	6.6%
25-29	346	6.1%	290	5.0%	345	5.9%
30-34	426	7.5%	338	5.8%	276	4.7%
35-39	386	6.8%	416	7.2%	329	5.6%
40-44	343	6.0%	400	6.9%	427	7.3%
45-49	318	5.6%	345	6.0%	403	6.9%
50-54	316	5.5%	329	5.7%	353	6.0%
55-59	402	7.1%	315	5.5%	330	5.6%
60-64	407	7.2%	390	6.8%	316	5.4%
65-69	407	7.2%	397	6.9%	392	6.7%
70-74	370	6.5%	382	6.6%	381	6.5%
75-79	256	4.5%	338	5.8%	360	6.2%
80-84	152	2.7%	224	3.9%	295	5.0%
Age 85+	145	2.5%	159	2.8%	222	3.8%

Race and Ethnicity	Census 2020		2025		2030	
	Number	Percent	Number	Percent	Number	Percent
White Alone	4,192	73.7%	4,219	73.0%	4,200	71.8%
Black Alone	278	4.9%	281	4.9%	292	5.0%
American Indian	30	0.5%	30	0.5%	30	0.5%
Asian Alone	70	1.2%	72	1.3%	77	1.3%
Pacific Islander	35	0.6%	36	0.6%	38	0.7%
Some Other Race	680	11.9%	717	12.4%	762	13.0%
Two or More Races	407	7.2%	422	7.3%	455	7.8%
Hispanic (Any Race)	1,047	18.4%	1,084	18.8%	1,151	19.7%

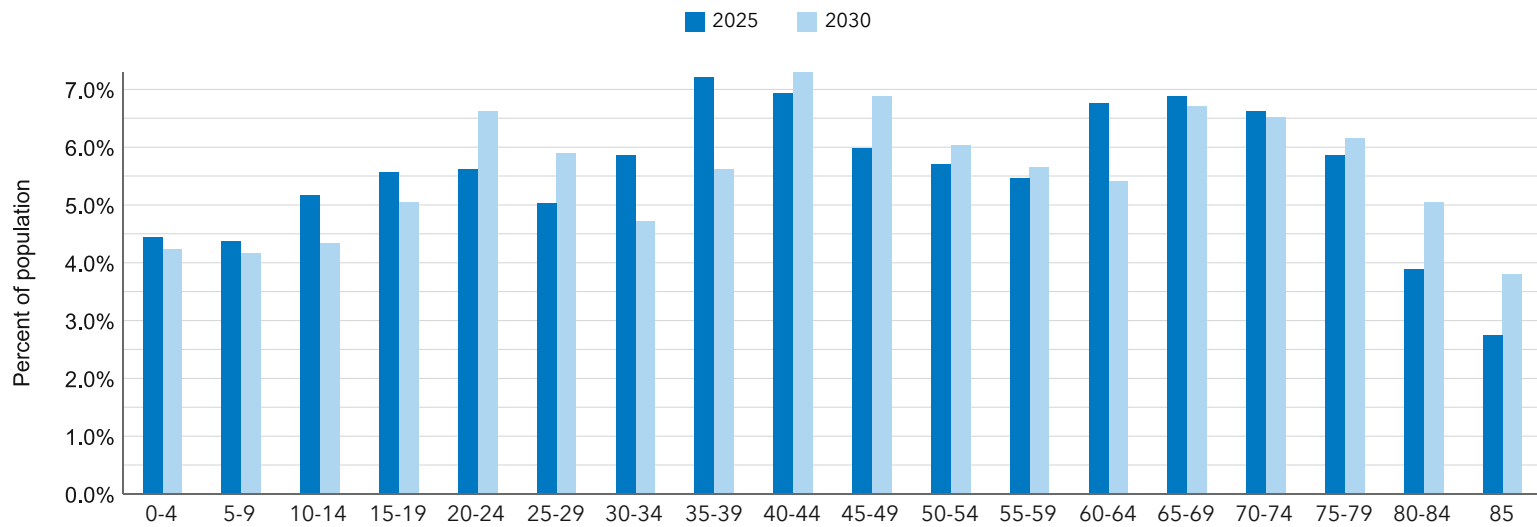
## Key Indicators for 2025



## Trends: 2025 - 2030 Annual Rate



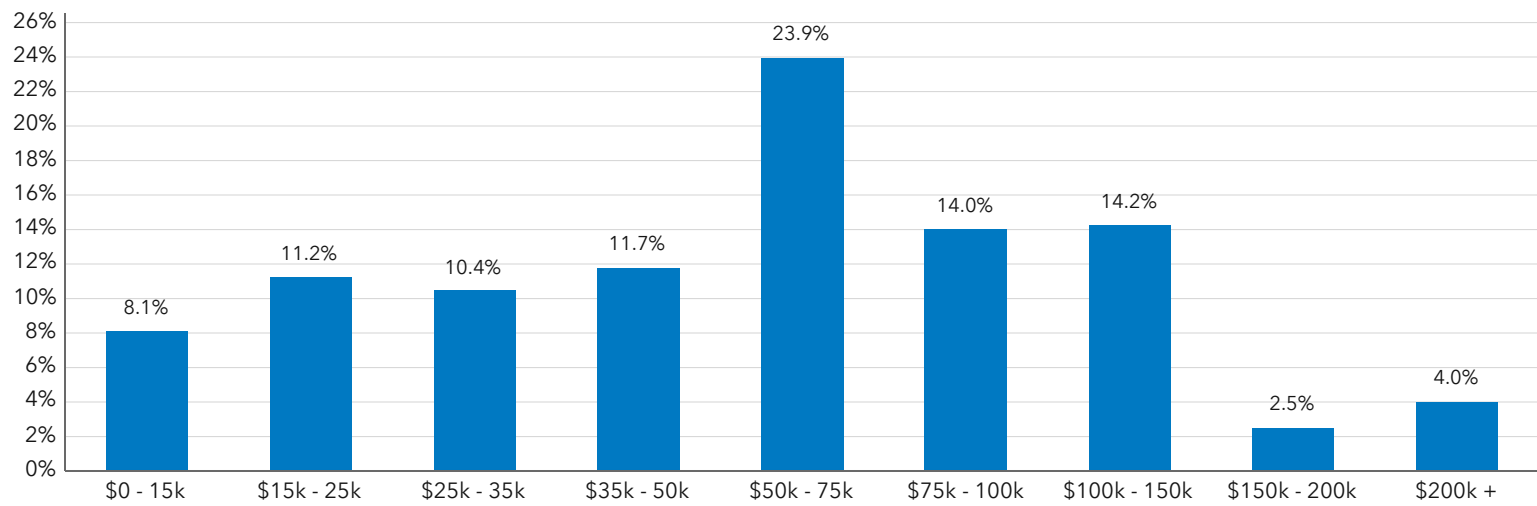
## Population by Age



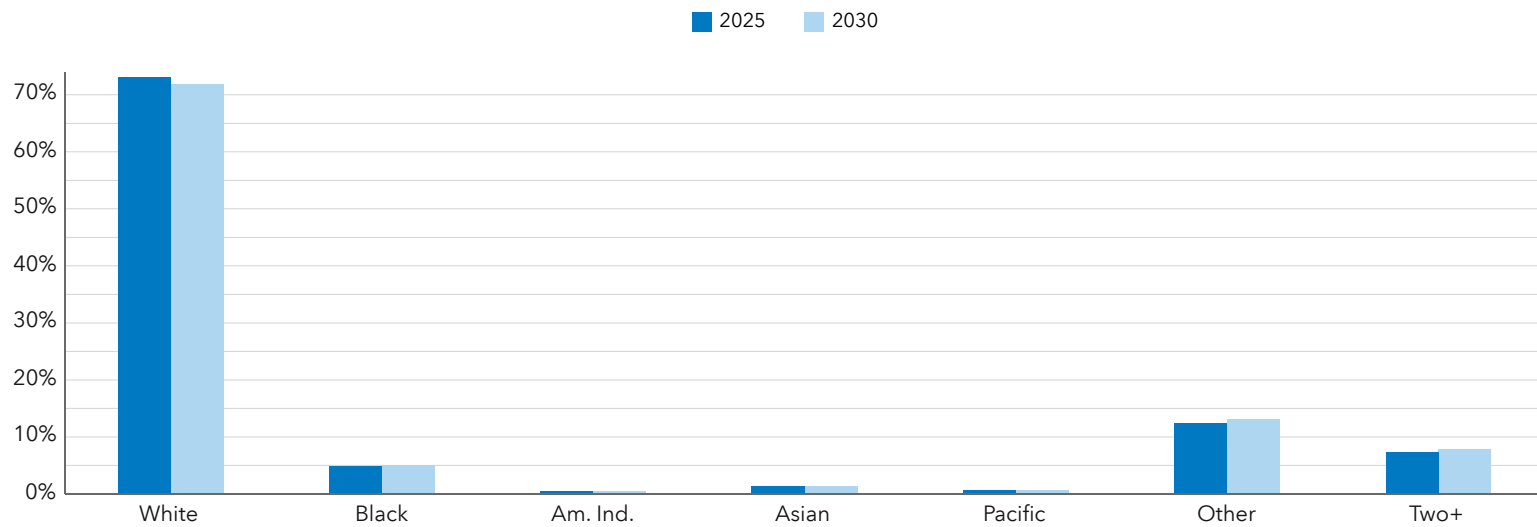
## Key Indicators for 2025



## Households by Income for 2025



## Population by Race



# Demographic and Income Profile

120 Chadwick Square Ct, Hendersonville, North Carolina, 28739



Ring: 3 mile radius

Summary	Census 2020	2025	2030
Total Population	31,080	31,756	32,419
Total Households	13,911	14,450	14,933
Family Households	8,158	8,230	8,415
Average Household Size	2.18	2.14	2.12
Owner Occupied Housing Units	8,915	9,412	10,029
Renter Occupied Housing Units	4,996	5,038	4,904
Median Age	49.6	50.2	51.1

Trends 2025 - 2030	Area	State	National
Population	0.4%	0.8%	0.4%
Households	0.7%	1.1%	0.6%
Family Population	0.4%	0.9%	0.5%
Owner Occupied Housing Units	1.3%	1.2%	0.0%
Median Household Income	2.0%	2.6%	2.5%

Households by Income	2025		2030	
	Number	Percent	Number	Percent
Less than \$15,000	968	6.7%	919	6.2%
\$15,000-\$24,999	1,087	7.5%	920	6.2%
\$25,000-\$34,999	1,641	11.4%	1,462	9.8%
\$35,000-\$49,999	2,019	14.0%	1,914	12.8%
\$50,000-\$74,999	3,134	21.7%	3,189	21.4%
\$75,000-\$99,999	1,784	12.3%	1,919	12.8%
\$100,000-\$149,999	1,814	12.6%	2,069	13.9%
\$150,000-\$199,999	1,047	7.3%	1,305	8.7%
\$200,000 or greater	956	6.6%	1,237	8.3%
Median Household Income	\$59,379	-	\$65,508	-
Average Household Income	\$85,695	-	\$93,913	-
Per Capita Income	\$38,794	-	\$43,034	-

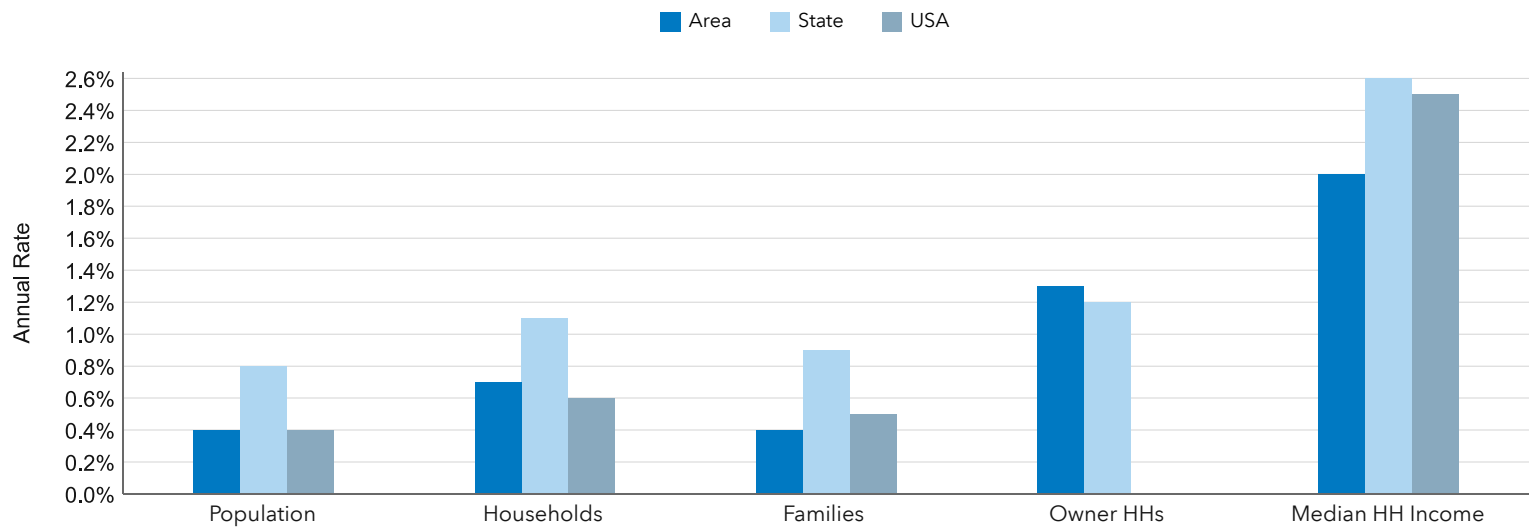
Population by Age	Census 2020		2025		2030	
	Number	Percent	Number	Percent	Number	Percent
0-4	1,286	4.1%	1,288	4.1%	1,283	4.0%
5-9	1,541	5.0%	1,342	4.2%	1,295	4.0%
10-14	1,631	5.3%	1,564	4.9%	1,374	4.2%
15-19	1,506	4.8%	1,595	5.0%	1,520	4.7%
20-24	1,340	4.3%	1,520	4.8%	1,610	5.0%
25-29	1,531	4.9%	1,462	4.6%	1,653	5.1%
30-34	1,795	5.8%	1,636	5.2%	1,493	4.6%
35-39	1,725	5.5%	1,852	5.8%	1,689	5.2%
40-44	1,611	5.2%	1,841	5.8%	1,954	6.0%
45-49	1,713	5.5%	1,714	5.4%	1,942	6.0%
50-54	1,736	5.6%	1,809	5.7%	1,778	5.5%
55-59	2,017	6.5%	1,845	5.8%	1,895	5.8%
60-64	2,286	7.4%	2,143	6.8%	2,002	6.2%
65-69	2,475	8.0%	2,388	7.5%	2,298	7.1%
70-74	2,342	7.5%	2,408	7.6%	2,375	7.3%
75-79	1,827	5.9%	2,231	7.0%	2,368	7.3%
80-84	1,237	4.0%	1,569	4.9%	1,948	6.0%
Age 85+	1,481	4.8%	1,548	4.9%	1,943	6.0%

Race and Ethnicity	Census 2020		2025		2030	
	Number	Percent	Number	Percent	Number	Percent
White Alone	23,719	76.3%	24,087	75.8%	24,243	74.8%
Black Alone	1,295	4.2%	1,340	4.2%	1,404	4.3%
American Indian	177	0.6%	176	0.6%	184	0.6%
Asian Alone	319	1.0%	327	1.0%	355	1.1%
Pacific Islander	265	0.8%	263	0.8%	275	0.8%
Some Other Race	3,182	10.2%	3,356	10.6%	3,564	11.0%
Two or More Races	2,122	6.8%	2,207	7.0%	2,395	7.4%
Hispanic (Any Race)	5,174	16.6%	5,346	16.8%	5,693	17.6%

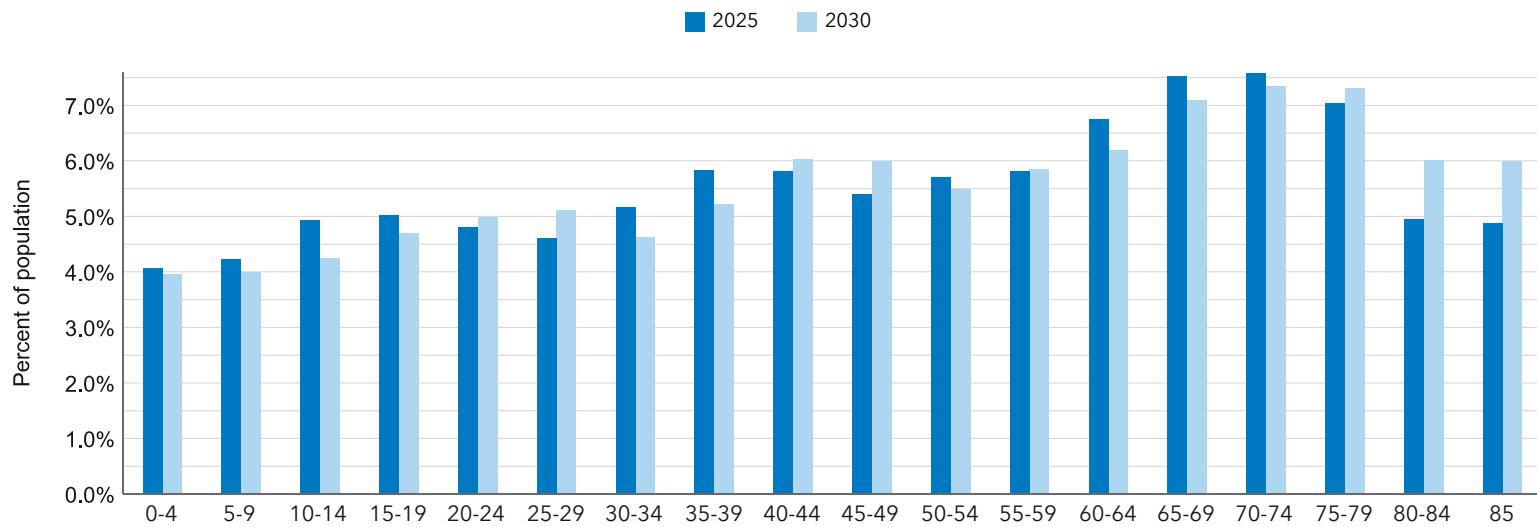
## Key Indicators for 2025



## Trends: 2025 - 2030 Annual Rate



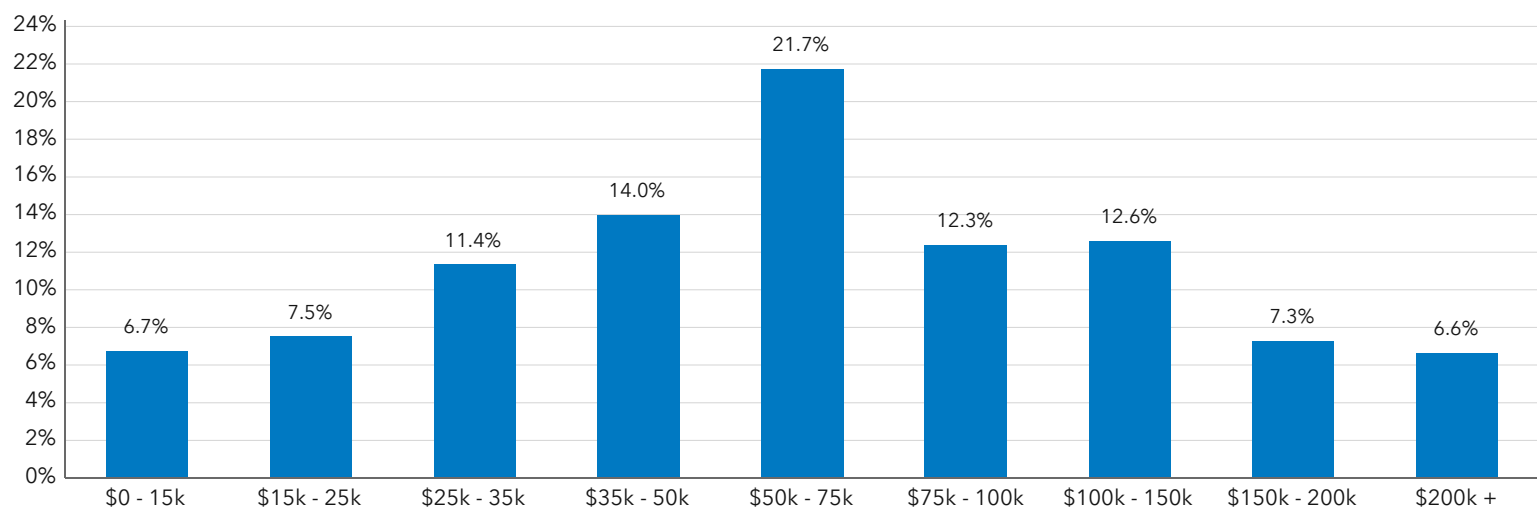
## Population by Age



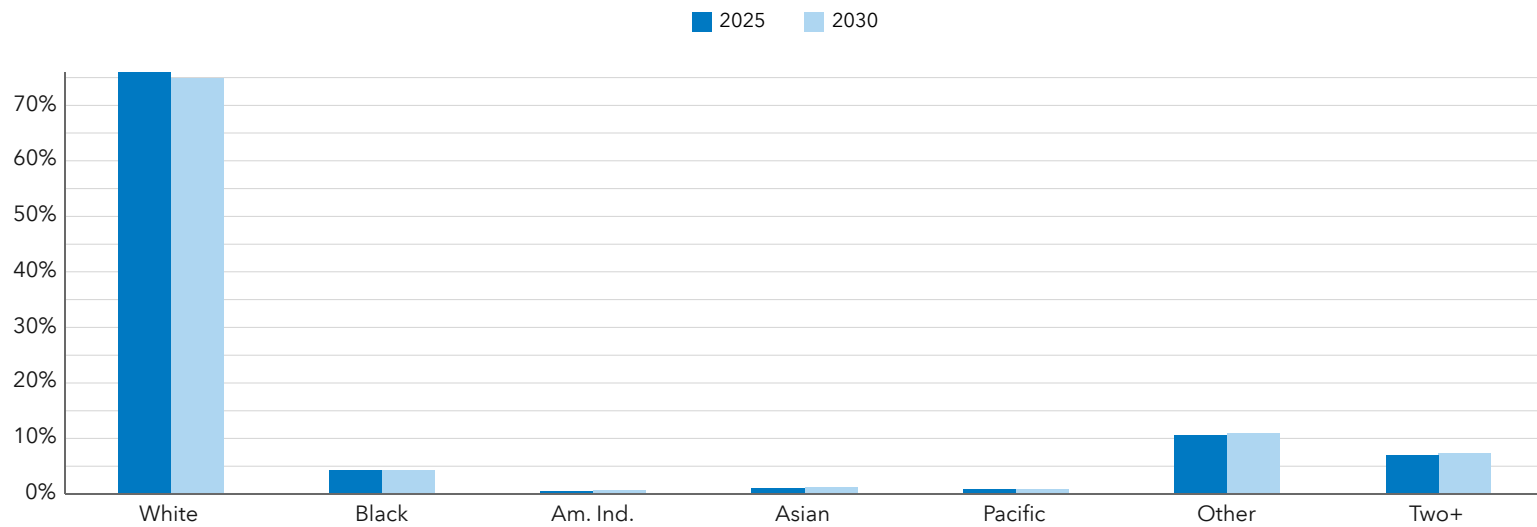
## Key Indicators for 2025



## Households by Income for 2025



## Population by Race



# Demographic and Income Profile

120 Chadwick Square Ct, Hendersonville, North Carolina, 28739



Ring: 5 mile radius

Summary	Census 2020	2025	2030
Total Population	56,510	58,527	59,901
Total Households	24,838	26,231	27,154
Family Households	15,275	15,674	16,069
Average Household Size	2.23	2.19	2.17
Owner Occupied Housing Units	16,966	18,129	19,294
Renter Occupied Housing Units	7,872	8,102	7,860
Median Age	50.3	50.6	51.2

Trends 2025 - 2030	Area	State	National
Population	0.5%	0.8%	0.4%
Households	0.7%	1.1%	0.6%
Family Population	0.5%	0.9%	0.5%
Owner Occupied Housing Units	1.3%	1.2%	0.0%
Median Household Income	2.1%	2.6%	2.5%

Households by Income	2025		2030	
	Number	Percent	Number	Percent
Less than \$15,000	1,472	5.6%	1,379	5.1%
\$15,000-\$24,999	1,705	6.5%	1,428	5.3%
\$25,000-\$34,999	2,815	10.7%	2,467	9.1%
\$35,000-\$49,999	3,763	14.3%	3,513	12.9%
\$50,000-\$74,999	5,803	22.1%	5,889	21.7%
\$75,000-\$99,999	3,343	12.7%	3,583	13.2%
\$100,000-\$149,999	3,445	13.1%	3,925	14.4%
\$150,000-\$199,999	2,041	7.8%	2,568	9.5%
\$200,000 or greater	1,844	7.0%	2,402	8.8%
Median Household Income	\$62,196	-	\$68,881	-
Average Household Income	\$88,802	-	\$97,470	-
Per Capita Income	\$39,813	-	\$44,201	-

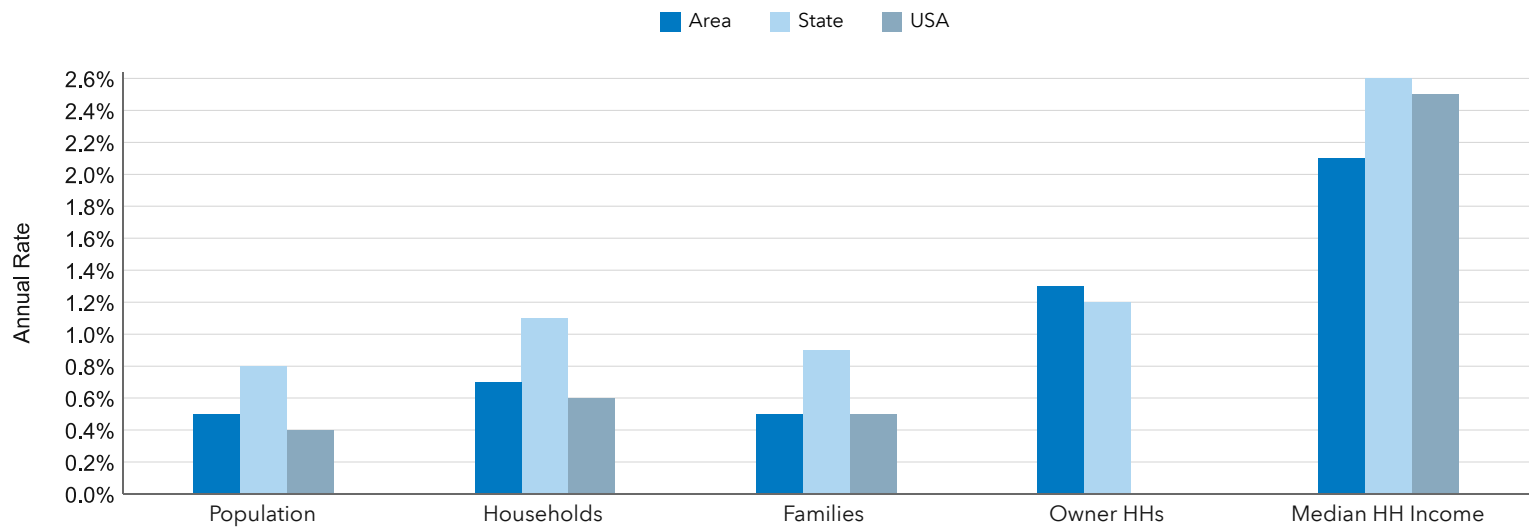
Population by Age	Census 2020		2025		2030	
	Number	Percent	Number	Percent	Number	Percent
0-4	2,366	4.2%	2,400	4.1%	2,415	4.0%
5-9	2,782	4.9%	2,598	4.4%	2,505	4.2%
10-14	2,924	5.2%	2,909	5.0%	2,715	4.5%
15-19	2,682	4.8%	2,836	4.8%	2,782	4.6%
20-24	2,414	4.3%	2,581	4.4%	2,704	4.5%
25-29	2,762	4.9%	2,650	4.5%	2,819	4.7%
30-34	3,100	5.5%	3,097	5.3%	2,809	4.7%
35-39	3,074	5.4%	3,325	5.7%	3,284	5.5%
40-44	2,871	5.1%	3,341	5.7%	3,546	5.9%
45-49	3,086	5.5%	3,135	5.4%	3,584	6.0%
50-54	3,287	5.8%	3,364	5.8%	3,330	5.6%
55-59	3,711	6.6%	3,546	6.1%	3,560	5.9%
60-64	4,171	7.4%	3,972	6.8%	3,835	6.4%
65-69	4,654	8.2%	4,357	7.4%	4,230	7.1%
70-74	4,576	8.1%	4,523	7.7%	4,319	7.2%
75-79	3,450	6.1%	4,278	7.3%	4,351	7.3%
80-84	2,206	3.9%	2,925	5.0%	3,659	6.1%
Age 85+	2,392	4.2%	2,689	4.6%	3,452	5.8%

Race and Ethnicity	Census 2020		2025		2030	
	Number	Percent	Number	Percent	Number	Percent
White Alone	44,308	78.4%	45,644	78.0%	46,089	76.9%
Black Alone	1,951	3.5%	2,044	3.5%	2,149	3.6%
American Indian	322	0.6%	325	0.6%	340	0.6%
Asian Alone	596	1.1%	612	1.1%	664	1.1%
Pacific Islander	405	0.7%	404	0.7%	422	0.7%
Some Other Race	5,037	8.9%	5,391	9.2%	5,758	9.6%
Two or More Races	3,890	6.9%	4,108	7.0%	4,480	7.5%
Hispanic (Any Race)	8,665	15.3%	9,065	15.5%	9,708	16.2%

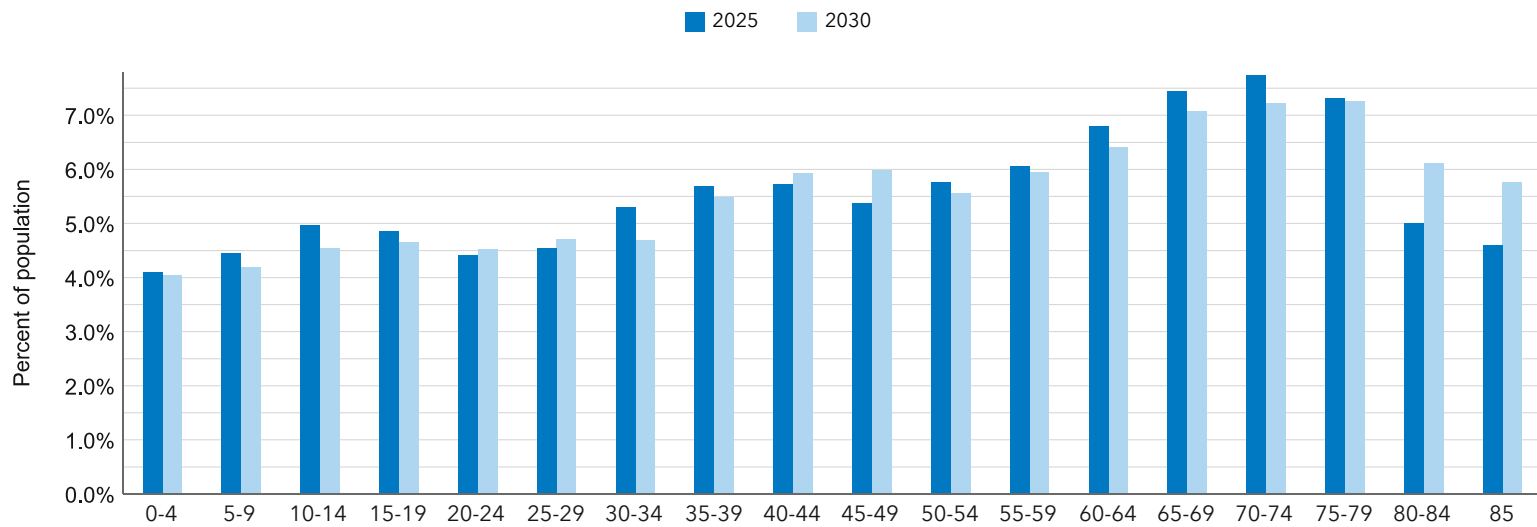
## Key Indicators for 2025



## Trends: 2025 - 2030 Annual Rate



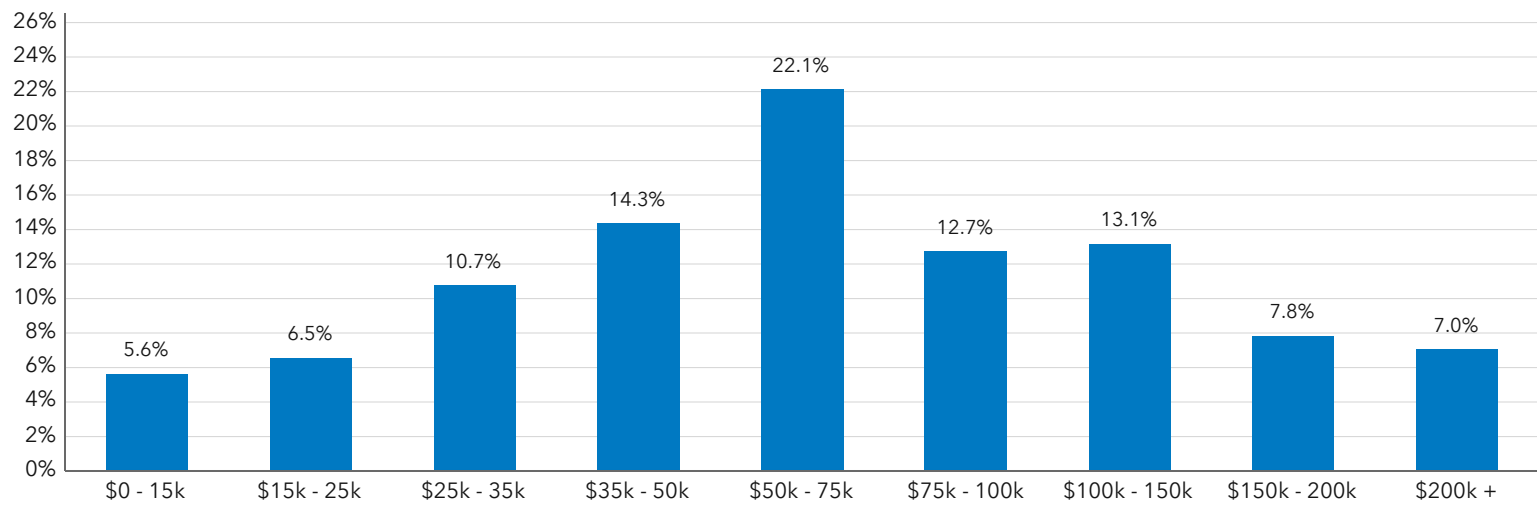
## Population by Age



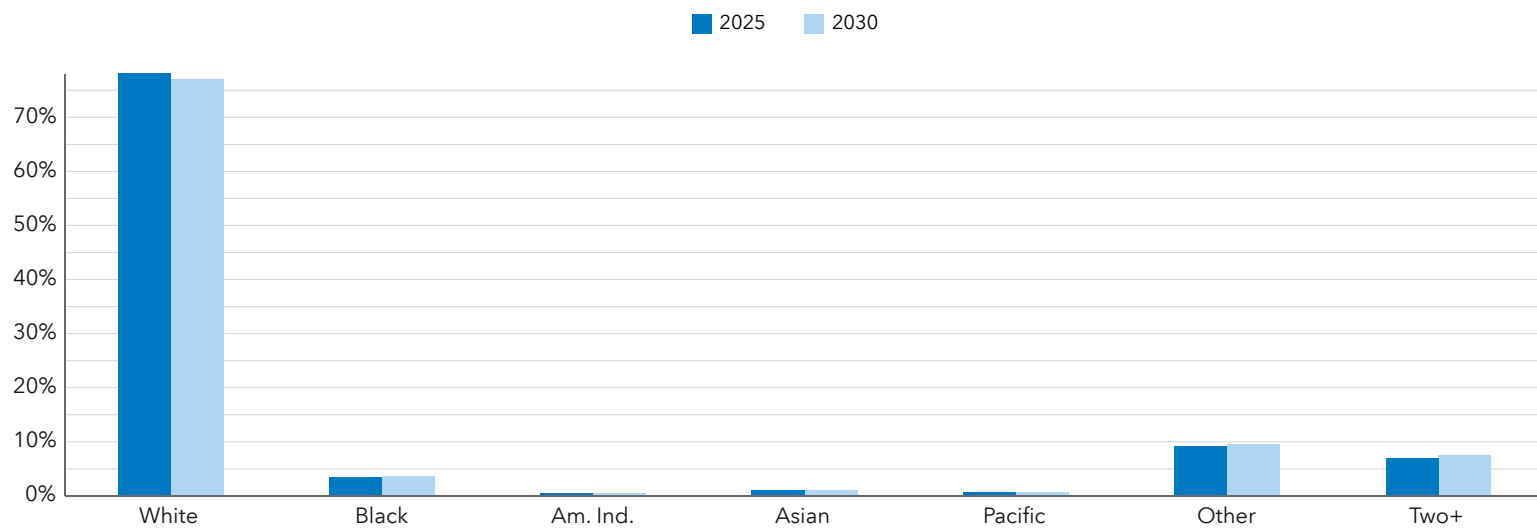
## Key Indicators for 2025



## Households by Income for 2025



## Population by Race



# Business Summary Report (NAICS)

120 Chadwick Square Ct, Hendersonville, North Carolina, 28739



Rings: 1, 3, 5 mile radii

Data for all businesses in area	1 mile	3 miles	5 miles
Total Businesses	815	2,365	3,004
Total Employees	6,279	26,772	33,594
Total Population	5,777	31,756	58,527
Employee/Population Ratio (per 100)	108.7	84.3	57.4

by NAICS Codes	Businesses		Employees		Businesses		Employees		Businesses		Employees	
	Number	%	Number	%	Number	%	Number	%	Number	%	Number	%
Agriculture, Forestry, Fishing & Hunting (11)	4	0.5%	14	0.2%	9	0.4%	25	0.1%	15	0.5%	55	0.2%
Mining (21)	0	0.0%	1	0.0%	2	0.1%	5	0.0%	3	0.1%	8	0.0%
Utilities (22)	2	0.3%	13	0.2%	2	0.1%	14	0.1%	2	0.1%	26	0.1%
Construction (23)	33	4.0%	127	2.0%	133	5.6%	549	2.0%	224	7.5%	1,326	4.0%
Building Construction	14	1.7%	42	0.7%	52	2.2%	219	0.8%	79	2.6%	296	0.9%
Heavy/Civil Eng Construction	3	0.4%	10	0.2%	11	0.5%	43	0.2%	22	0.7%	89	0.3%
Specialty Trade Contractor	16	2.0%	75	1.2%	69	2.9%	287	1.1%	122	4.1%	941	2.8%
Manufacturing (31-33)	18	2.2%	288	4.6%	62	2.6%	903	3.4%	95	3.2%	2,066	6.2%
Wholesale Trade (42)	12	1.5%	65	1.0%	52	2.2%	389	1.4%	66	2.2%	488	1.4%
Durable Goods	11	1.4%	51	0.8%	40	1.7%	236	0.9%	49	1.6%	280	0.8%
Nondurable Goods	1	0.1%	5	0.1%	11	0.5%	125	0.5%	15	0.5%	175	0.5%
Trade Broker	0	0.0%	10	0.2%	1	0.0%	28	0.1%	2	0.1%	32	0.1%



**Source:** This infographic contains data provided by Esri-Data Axle (2025), Esri (2025). Data note: Not all NAICS subcategories for a 2 digit major category are being shown.

# Business Summary Report (NAICS)

120 Chadwick Square Ct, Hendersonville, North Carolina, 28739



Rings: 1, 3, 5 mile radii

by NAICS Codes	1 mile				3 miles				5 miles			
	Businesses		Employees		Businesses		Employees		Businesses		Employees	
	Number	%	Number	%	Number	%	Number	%	Number	%	Number	%
Retail Trade (44-45)	120	14.7%	1,020	16.2%	333	14.1%	3,421	12.8%	422	14.1%	4,751	14.1%
Motor Vehicle & Parts Dealers	12	1.5%	105	1.7%	33	1.4%	431	1.6%	44	1.5%	565	1.7%
Furniture & Home Furnishing Stores	13	1.6%	51	0.8%	27	1.1%	167	0.6%	32	1.1%	214	0.6%
Electronics & Appliance Stores	3	0.4%	11	0.2%	8	0.3%	30	0.1%	11	0.4%	35	0.1%
Building & Garden Equipment	7	0.9%	37	0.6%	27	1.1%	424	1.6%	39	1.3%	491	1.5%
Food & Beverage Stores	20	2.5%	457	7.3%	47	2.0%	1,029	3.8%	58	1.9%	1,268	3.8%
Health & Personal Care Stores	13	1.6%	142	2.3%	38	1.6%	358	1.3%	50	1.7%	434	1.3%
Gasoline Stations	3	0.4%	13	0.2%	18	0.8%	84	0.3%	25	0.8%	116	0.3%
Clothing, Shoe and Jewellery Stores	11	1.4%	38	0.6%	24	1.0%	86	0.3%	28	0.9%	104	0.3%
Sporting Goods, Hobby & Music Stores	28	3.4%	114	1.8%	75	3.2%	351	1.3%	90	3.0%	405	1.2%
General Merchandise Stores	11	1.4%	52	0.8%	36	1.5%	460	1.7%	44	1.5%	1,119	3.3%
Transportation & Warehousing (48-49)	8	1.0%	30	0.5%	29	1.2%	344	1.3%	42	1.4%	436	1.3%
Truck Transportation	0	0.0%	1	0.0%	8	0.3%	131	0.5%	14	0.5%	160	0.5%
Information (51)	8	1.0%	46	0.7%	46	1.9%	452	1.7%	54	1.8%	484	1.4%
Finance & Insurance (52)	63	7.7%	255	4.1%	122	5.2%	4,746	17.7%	134	4.5%	4,850	14.4%
Central Bank/Credit & Related Activities	24	2.9%	121	1.9%	47	2.0%	4,452	16.6%	52	1.7%	4,515	13.4%
Securities & Commodity Contracts	21	2.6%	60	1.0%	41	1.7%	119	0.4%	45	1.5%	140	0.4%
Funds, Trusts & Other Financial	18	2.2%	74	1.2%	34	1.4%	176	0.7%	37	1.2%	195	0.6%
Real Estate, Rental & Leasing (53)	49	6.0%	592	9.4%	129	5.5%	980	3.7%	168	5.6%	1,163	3.5%
Professional, Scientific & Tech Services (54)	84	10.3%	629	10.0%	208	8.8%	1,276	4.8%	255	8.5%	1,441	4.3%
Legal Services	33	4.0%	166	2.6%	62	2.6%	299	1.1%	65	2.2%	307	0.9%



**Source:** This infographic contains data provided by Esri-Data Axle (2025), Esri (2025). Data note: Not all NAICS subcategories for a 2 digit major category are being shown.

# Business Summary Report (NAICS)

120 Chadwick Square Ct, Hendersonville, North Carolina, 28739



Rings: 1, 3, 5 mile radii

by NAICS Codes	1 mile				3 miles				5 miles			
	Businesses		Employees		Businesses		Employees		Businesses		Employees	
	Number	%	Number	%	Number	%	Number	%	Number	%	Number	%
Management of Companies (55)	0	0.0%	1	0.0%	6	0.3%	17	0.1%	7	0.2%	20	0.1%
Administrative, Support & Waste Mgmt (56)	11	1.4%	63	1.0%	53	2.2%	351	1.3%	83	2.8%	459	1.4%
Educational Services (61)	8	1.0%	79	1.3%	53	2.2%	1,373	5.1%	64	2.1%	1,707	5.1%
Health Care & Social Assistance (62)	69	8.5%	667	10.6%	292	12.3%	5,601	20.9%	333	11.1%	6,214	18.5%
Ambulatory Health Care	43	5.3%	331	5.3%	196	8.3%	2,247	8.4%	218	7.3%	2,524	7.5%
Hospital	0	0.0%	0	0.0%	7	0.3%	1,097	4.1%	9	0.3%	1,105	3.3%
Nursing/Residential Care	6	0.7%	123	2.0%	32	1.4%	1,321	4.9%	39	1.3%	1,570	4.7%
Social Assistance	20	2.5%	212	3.4%	57	2.4%	936	3.5%	67	2.2%	1,015	3.0%
Arts, Entertainment & Recreation (71)	22	2.7%	108	1.7%	50	2.1%	359	1.3%	65	2.2%	459	1.4%
Accommodation & Food Services (72)	64	7.8%	814	13.0%	187	7.9%	2,710	10.1%	242	8.1%	3,871	11.5%
Accommodation	7	0.9%	35	0.6%	33	1.4%	504	1.9%	58	1.9%	1,262	3.8%
Food & Drinking Places	57	7.0%	779	12.4%	154	6.5%	2,206	8.2%	183	6.1%	2,609	7.8%
Other Services Except Public Admin (81)	132	16.2%	525	8.4%	360	15.2%	1,607	6.0%	440	14.7%	1,958	5.8%
Repair & Maintenance	27	3.3%	98	1.6%	77	3.3%	289	1.1%	98	3.3%	365	1.1%
Auto Repair & Maintenance	20	2.5%	87	1.4%	57	2.4%	245	0.9%	72	2.4%	311	0.9%
Personal & Laundry Service	53	6.5%	255	4.1%	127	5.4%	568	2.1%	148	4.9%	627	1.9%
Civic and Other Orgs	52	6.4%	172	2.7%	156	6.6%	750	2.8%	194	6.5%	966	2.9%
Public Administration (92)	62	7.6%	936	14.9%	99	4.2%	1,633	6.1%	112	3.7%	1,790	5.3%
Unclassified Establishments (99)	44	5.4%	6	0.1%	138	5.8%	17	0.1%	179	6.0%	23	0.1%
Total (11-99)	815	100.0%	6,279	100.0%	2,365	100.0%	26,772	100.0%	3,004	100.0%	33,594	100.0%



**Source:** This infographic contains data provided by Esri-Data Axle (2025), Esri (2025). Data note: Not all NAICS subcategories for a 2 digit major category are being shown.

# Business Summary Report (SIC)

120 Chadwick Square Ct, Hendersonville, North Carolina, 28739



Rings: 1, 3, 5 mile radii

Data for all businesses in area	1 mile	3 miles	5 miles
Total Businesses	815	2,365	3,004
Total Employees	6,279	26,772	33,594
Total Population	5,777	31,756	58,527
Employee/Population Ratio (per 100 )	108.7	84.3	57.4

by SIC Codes	Businesses		Employees		Businesses		Employees		Businesses		Employees	
	Number	%	Number	%	Number	%	Number	%	Number	%	Number	%
Agriculture & Mining (01-14)	13	1.6%	45	0.7%	51	2.2%	196	0.7%	79	2.6%	282	0.8%
Construction (15-17)	29	3.6%	116	1.9%	126	5.3%	527	2.0%	217	7.2%	1,299	3.9%
Manufacturing (20-39)	15	1.8%	267	4.3%	55	2.3%	913	3.4%	83	2.8%	2,046	6.1%
Transportation (40-47)	10	1.2%	37	0.6%	43	1.8%	378	1.4%	64	2.1%	495	1.5%
Communication (48)	5	0.6%	20	0.3%	21	0.9%	120	0.5%	24	0.8%	131	0.4%
Utility (49)	2	0.3%	13	0.2%	3	0.1%	18	0.1%	7	0.2%	41	0.1%
Wholesale Trade (50-51)	13	1.6%	77	1.2%	53	2.2%	403	1.5%	67	2.2%	502	1.5%
Retail Trade Summary (52-59)	181	22.2%	1,817	28.9%	501	21.2%	9,862	36.8%	624	20.8%	11,656	34.7%
Home Improvement	7	0.9%	37	0.6%	27	1.1%	424	1.6%	39	1.3%	491	1.5%
General Merchandise Stores	5	0.6%	29	0.5%	21	0.9%	401	1.5%	26	0.9%	1,049	3.1%
Food Stores	24	2.9%	523	8.3%	57	2.4%	1,150	4.3%	70	2.3%	1,424	4.2%
Auto Dealers & Gas Stations	15	1.8%	117	1.9%	50	2.1%	511	1.9%	68	2.3%	677	2.0%
Apparel & Accessory Stores	7	0.9%	26	0.4%	15	0.6%	57	0.2%	18	0.6%	74	0.2%
Furniture & Home Furnishings	17	2.1%	65	1.0%	39	1.6%	209	0.8%	53	1.8%	285	0.8%
Eating & Drinking Places	54	6.6%	759	12.1%	148	6.3%	2,158	8.1%	174	5.8%	2,527	7.5%
Miscellaneous Retail	52	6.4%	261	4.2%	144	6.1%	4,953	18.5%	175	5.8%	5,130	15.3%

# Business Summary Report (SIC)

120 Chadwick Square Ct, Hendersonville, North Carolina, 28739



Rings: 1, 3, 5 mile radii

by SIC Codes	1 mile				3 miles				5 miles			
	Businesses		Employees		Businesses		Employees		Businesses		Employees	
	Number	%	Number	%	Number	%	Number	%	Number	%	Number	%
Finance, Insurance, Real Estate (60-67)	117	14.4%	867	13.8%	244	10.3%	1,523	5.7%	287	9.6%	1,757	5.2%
Banks, Savings & Lending	26	3.2%	127	2.0%	48	2.0%	284	1.1%	54	1.8%	321	1.0%
Securities Brokers	20	2.5%	57	0.9%	39	1.6%	113	0.4%	43	1.4%	134	0.4%
Insurance Carriers & Agents	18	2.2%	74	1.2%	34	1.4%	176	0.7%	37	1.2%	195	0.6%
Real Estate, Investment Offices	53	6.5%	609	9.7%	122	5.2%	951	3.5%	153	5.1%	1,107	3.3%
Services Summary (70-89)	324	39.8%	2,099	33.4%	1,033	43.7%	11,202	41.8%	1,264	42.1%	13,590	40.5%
Hotels & Lodging	7	0.9%	35	0.6%	33	1.4%	504	1.9%	58	1.9%	1,262	3.8%
Automotive Services	24	2.9%	99	1.6%	69	2.9%	292	1.1%	88	2.9%	365	1.1%
Movies & Amusements	16	2.0%	81	1.3%	53	2.2%	408	1.5%	67	2.2%	510	1.5%
Health Services	45	5.5%	389	6.2%	224	9.5%	4,483	16.8%	254	8.5%	4,959	14.8%
Legal Services	30	3.7%	157	2.5%	58	2.5%	288	1.1%	61	2.0%	296	0.9%
Education Inst. & Libraries	7	0.9%	79	1.3%	40	1.7%	1,320	4.9%	47	1.6%	1,644	4.9%
Other Services	195	23.9%	1,258	20.0%	556	23.5%	3,906	14.6%	688	22.9%	4,555	13.6%
Government (91-97)	61	7.5%	916	14.6%	98	4.1%	1,613	6.0%	111	3.7%	1,770	5.3%
Unclassified Establishments (99)	44	5.4%	6	0.1%	138	5.8%	17	0.1%	179	6.0%	23	0.1%
Totals (01-99)	815	100.0%	6,279	100.0%	2,365	100.0%	26,772	100.0%	3,004	100.0%	33,594	100.0%