

Sales Price: \$2,500,000

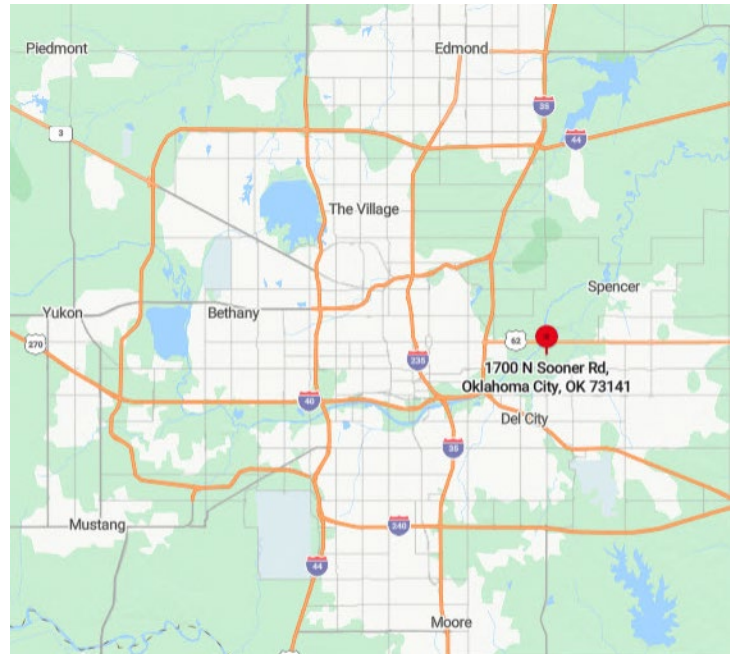
CALL FOR OFFERS



1702 N. Sooner Road
Oklahoma City, Oklahoma 73141

PROPERTY HIGHLIGHTS

- **68,600 SF on 7.25 Acres**
- I-2 Zoning
- 5 Buildings Totaling 68,600 SF
- Adjacent to Rail
- Ready to Refurbish & Repurpose
- 580' of Frontage on N. Sooner Road

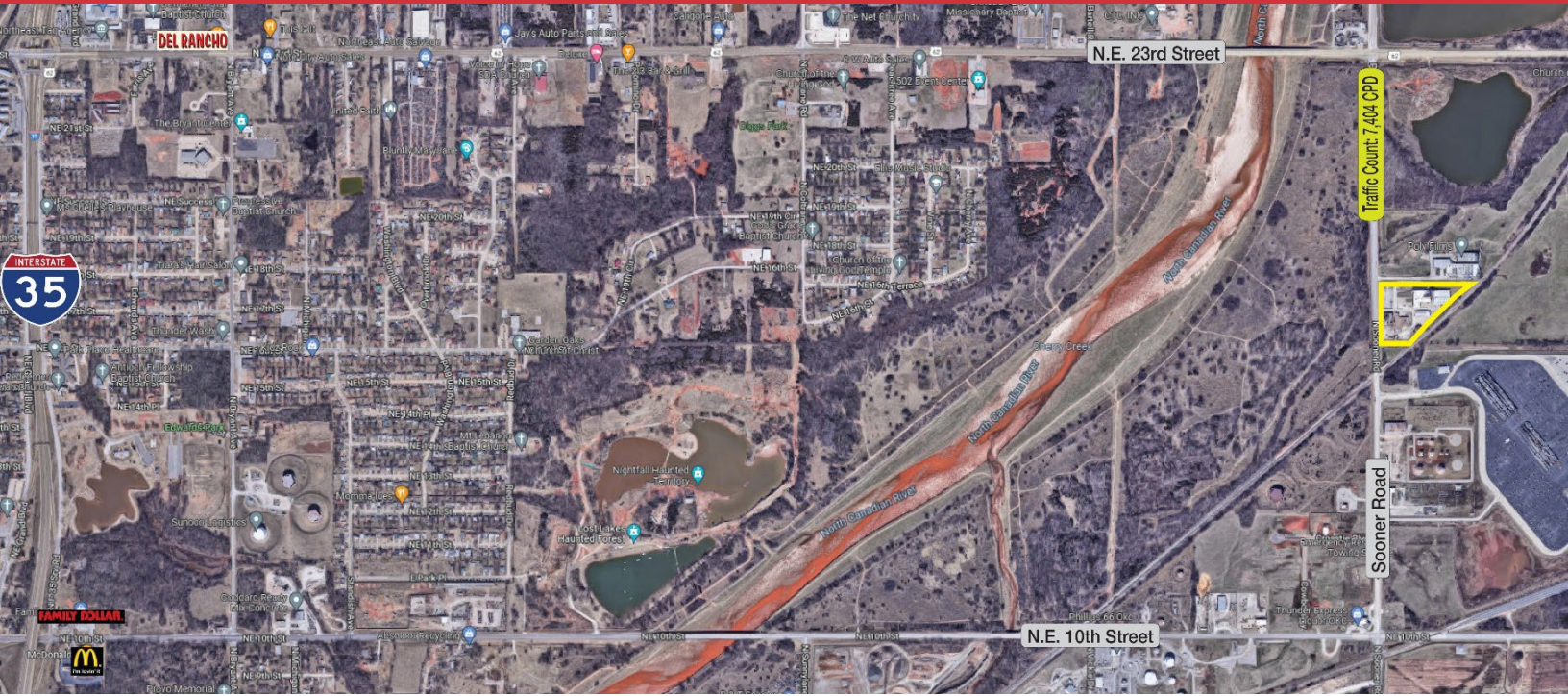


Darryl Meason / Irmon Gray
+1 405 205 9440
darryl@naisullivangroup.com

+1 405 840 0600 OFFICE

4045 N.W. 64th Street, Suite 340
Oklahoma City, OK 73116

www.naisullivangroup.com



Population	1 Mile: 1,155	3 Miles: 44,495	5 Miles: 119,950
Average Household Income	1 Mile: \$48,946	3 Miles: \$53,757	5 Miles: \$56,331
Total Households	1 Mile: 474	3 Miles: 18,851	5 Miles: 49,175

Darryl Meason / Irmon Gray
+1 405 205 9440
 darryl@naisullivangroup.com

+1 405 840 0600 OFFICE

4045 N.W. 64th Street, Suite 340
 Oklahoma City, OK 73116

www.naisullivangroup.com