

Office/Warehouse/ Flex Condo | For Sale

CBRE

Ideal for Owner User or Investor

6622 Owens Dr. Pleasanton, CA

Price Reduced from ~~\$2,210,000~~ to \$1,985,000





*Please do not disturb occupant.

Office/Warehouse/Flex Condominium

Property Highlights

- + ±4,659 SF Condo
- + ±5,202 RSF
- + APN#: 941-130-185
- + Zoning PUD-I/C-O (Office, R&D, Light Industrial, Commercial)
- + Great Location Near I-680 / I-580 Interchange and Amenities
- + Ample Parking
- + Minimum ±15' Clear in Warehouse Area
- + ±9' Clear in Office Area
- + Ample Power - Single Phase
- + One (1) Grade Level Door (±10'x±9')
- + Seller Will Lease Back Through December 31, 2024
- + **Price Reduced ~~\$2,210,000~~ to \$1,985,000**

Floor Plan

±4,659 SF Condo

±5,202 RSF



Pleasanton Park

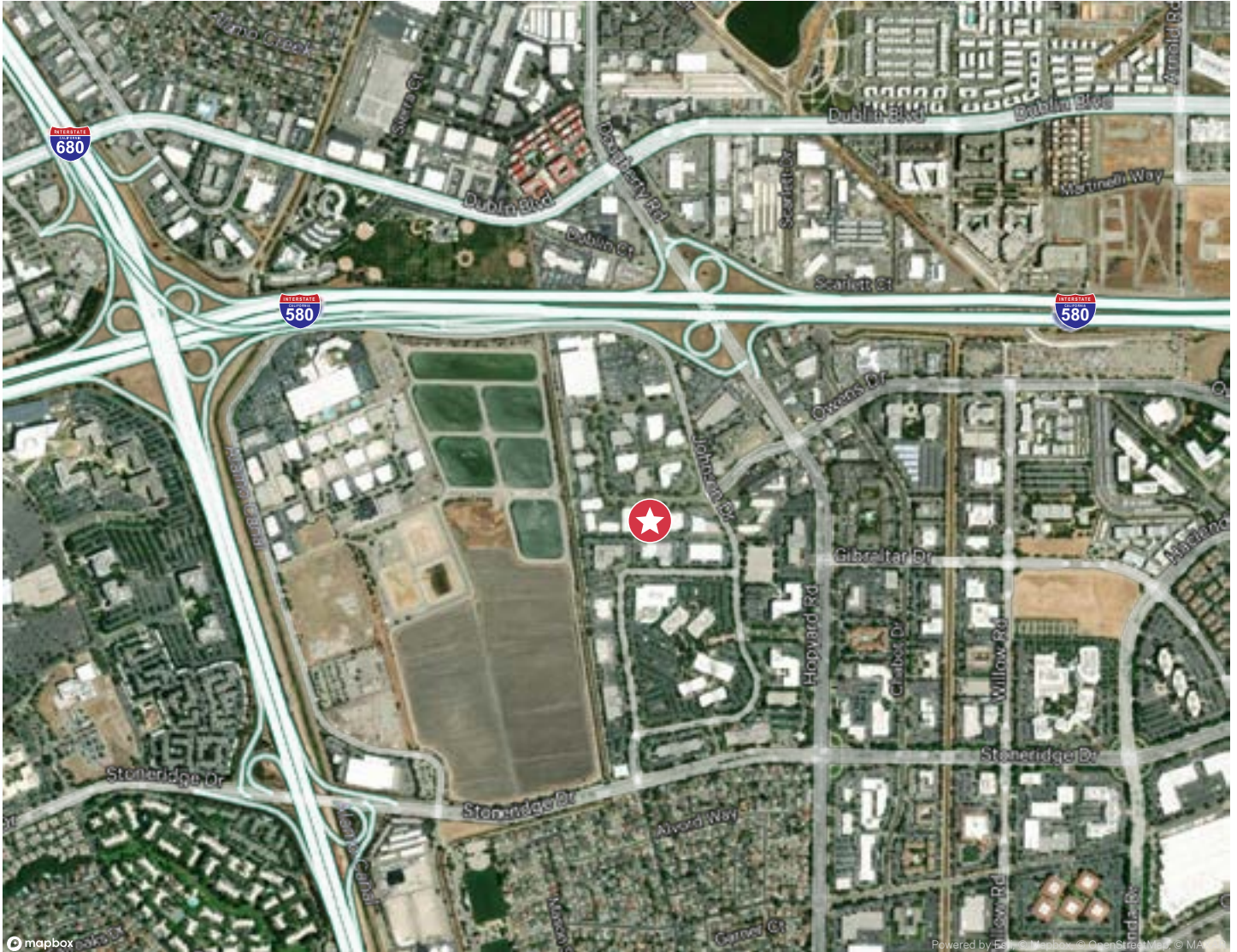
6622 Owens Dr. | Pleasanton, CA 94588

For Sale



6622 Owens Drive, Pleasanton	10 MILES	25 MILES	50 MILES
Population			
2023 Population	562,974	3,839,489	8,345,432
2028 Population Projection	567,823	3,890,545	8,432,852
Household Income			
2023 Average Household Income	\$201,449	\$181,262	\$173,615
2028 Average Household Income Projection	\$226,726	\$204,528	\$196,232
Households			
2023 Households - Current Year Estimate	192,251	1,347,650	2,953,255
2028 Households - Five Year Projection	194,302	1,369,634	2,989,893

Aerial Map



Contact Us

Greg Smyth

First Vice President
+1 925 296 7717
greg.smyth@cbre.com
Lic. 01131484

Adam Ebner

Senior Vice President
+1 925 296 7706
adam.ebner@cbre.com
Lic. 01213890

CBRE, Inc.

1676 N California Blvd.
Suite 500
Walnut Creek, CA 94596
+1 925 296 7700

© 2024 CBRE, Inc. All rights reserved. This information has been obtained from sources believed reliable, but has not been verified for accuracy or completeness. You should conduct a careful, independent investigation of the property and verify all information. Any reliance on this information is solely at your own risk. CBRE and the CBRE logo are service marks of CBRE, Inc. All other marks displayed on this document are the property of their respective owners, and the use of such logos does not imply any affiliation with or endorsement of CBRE. Photos herein are the property of their respective owners. Use of these images without the express written consent of the owner is prohibited.