

**FOR
LEASE**

NEAR AIRPORT

Industrial/Flex

551 Eastpark Court | Sandston, VA 23150



**COMMONWEALTH
COMMERCIAL**
Comprehensive Property Solutions



PROPERTY HIGHLIGHTS

- › 6,000± SF warehouse/flex space for lease
- › 3,000± SF of office, 3,000± SF of 18'-21' clear ceiling
- › Two 10' x 12' roll up doors accessing warehouse
- › 3 Phase 120/208V, 800 Amp service
- › Available: January 1, 2025
- › Rental Rate: \$12.50/SF, NNN

FOR MORE INFORMATION:

MICHAEL MAYHEW

First Vice President

804-250-1345

mmayhew@commonwealthcommercial.com

JAMIE GALANTI, CCIM, SIOR

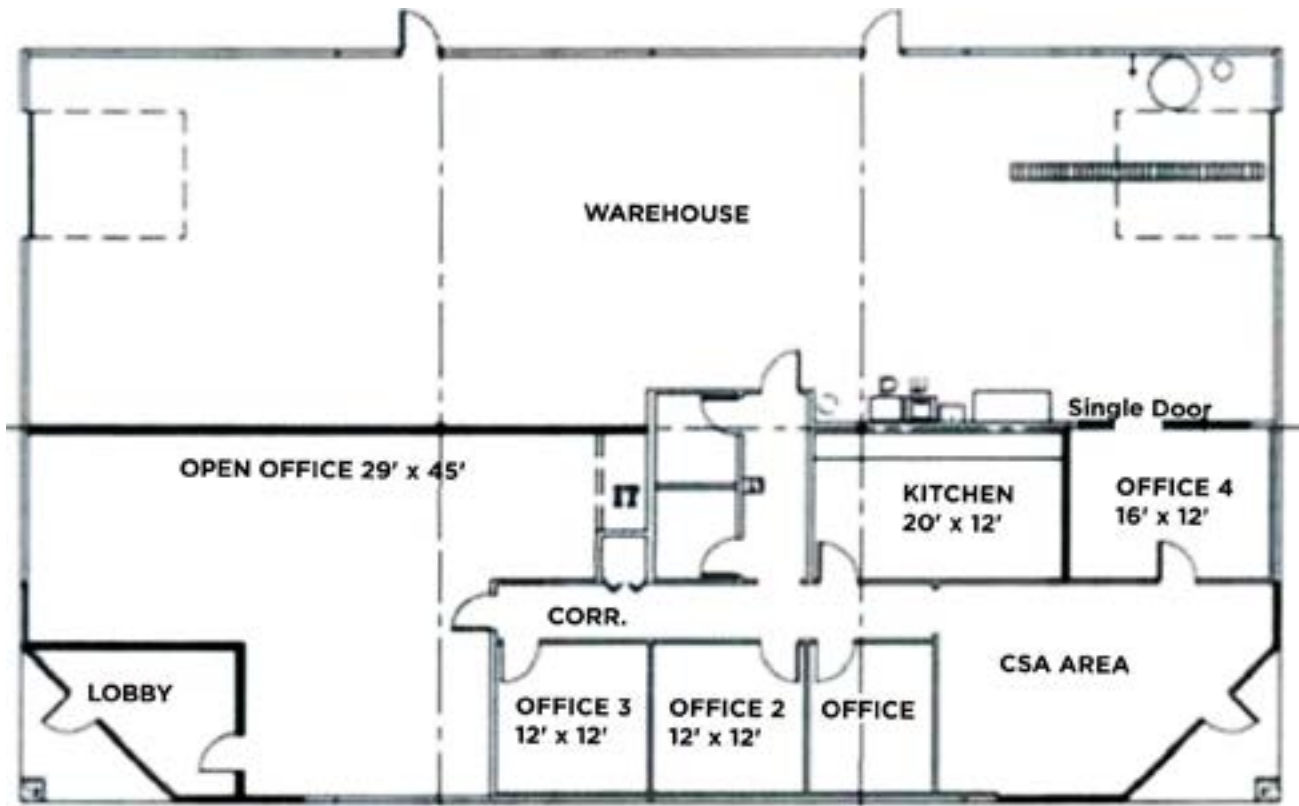
Senior Vice President | Partner

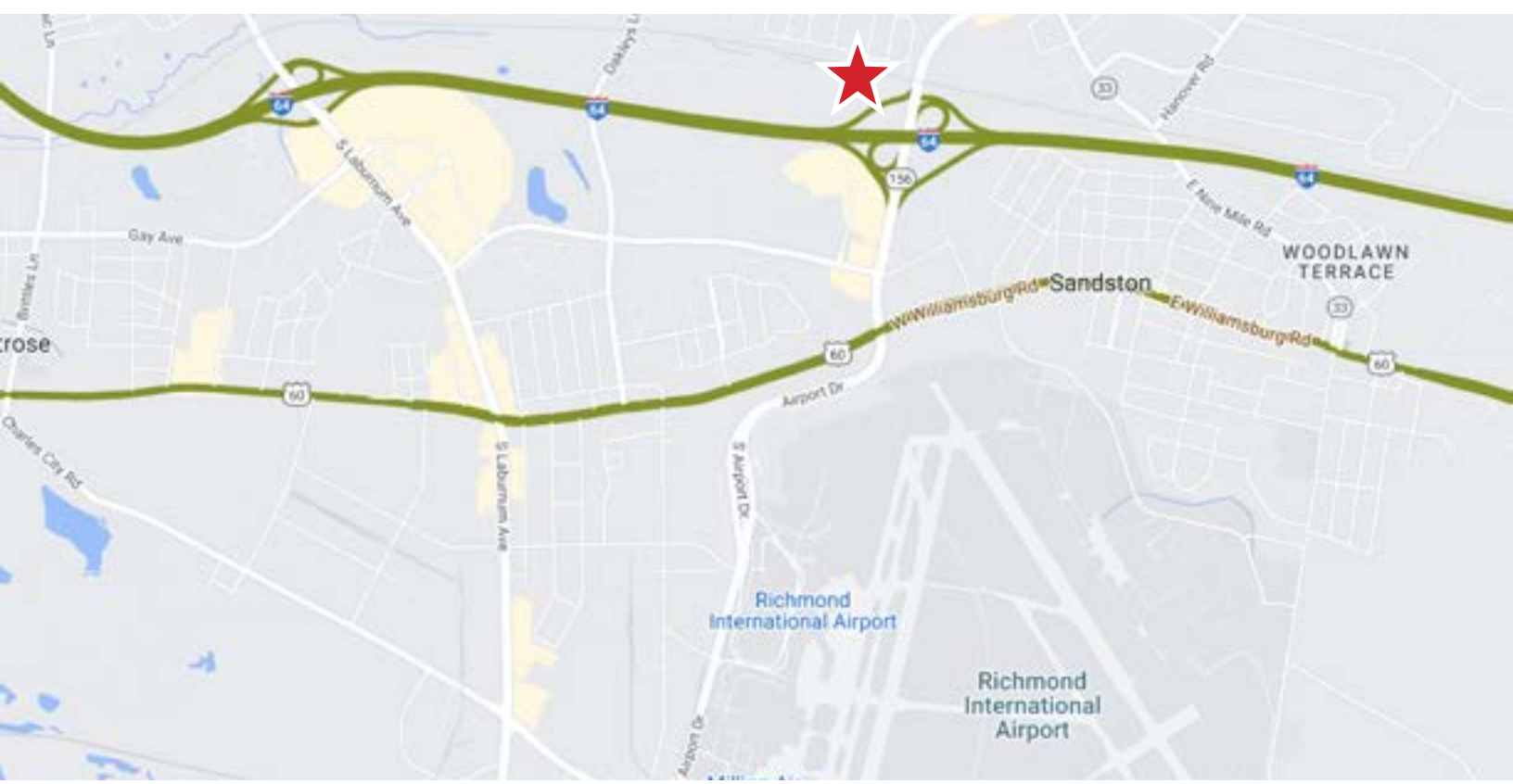
804-433-1825

jgalanti@commonwealthcommercial.com

Commonwealth Commercial Partners, LLC represents the Landlord of this property. Information contained herein is deemed reliable but is not guaranteed.

FLOOR PLAN





FOR LEASE | 551 EASTPARK COURT | SANDSTON, VA 23150