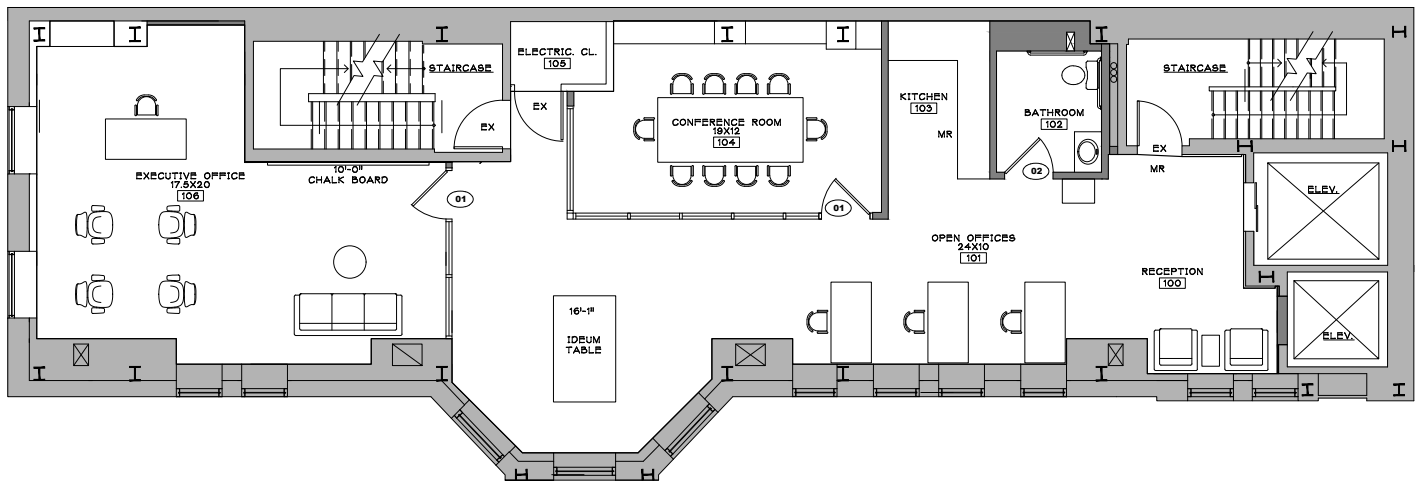


# 3<sup>rd</sup> Floor : 2,171 SF



### DOWNTOWN & URBAN OFFICE

**ROBERT F. LECLAIR**  
Managing Director & Partner  
617.850.9614  
rleclair@bradvisors.com

**WILLIAM H. CATLIN**  
Managing Director & Senior Partner  
617.850.9606  
wcatlin@bradvisors.com

**BONNY L. DOORAKIAN**  
Managing Director & Partner  
617.850.9655  
bdoorakian@bradvisors.com



136 Newbury Street | Boston, MA 02116 | 617.375.7900 | BRAdvisors.com

© Copyright Boston Realty Advisors. All rights reserved. The information contained here has been obtained through sources deemed reliable but cannot be guaranteed as to its accuracy. Any information of special interest should be obtained through independent verification.

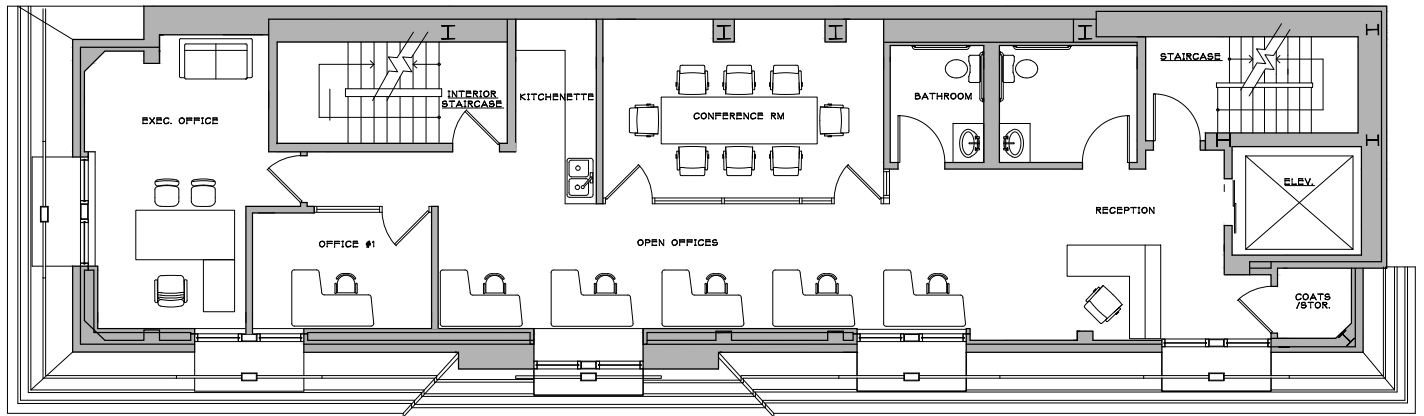
# 2 NEWBURY

BACK BAY • BOSTON, MA

At the Intersection of Arlington & Newbury Streets

CONCEPT SPEC SUITE

## 6<sup>th</sup> Floor : 2,330 SF



### DOWNTOWN & URBAN OFFICE

**ROBERT F. LECLAIR**

*Managing Director & Partner*

617.850.9614

rleclair@bradvisors.com

**WILLIAM H. CATLIN**

*Managing Director & Senior Partner*

617.850.9606

wcatlin@bradvisors.com

**BONNY L. DOORAKIAN**

*Managing Director & Partner*

617.850.9655

bdoorakian@bradvisors.com



136 Newbury Street | Boston, MA 02116 | 617.375.7900 | BRAdvisors.com

© Copyright Boston Realty Advisors. All rights reserved. The information contained here has been obtained through sources deemed reliable but cannot be guaranteed as to its accuracy. Any information of special interest should be obtained through independent verification.