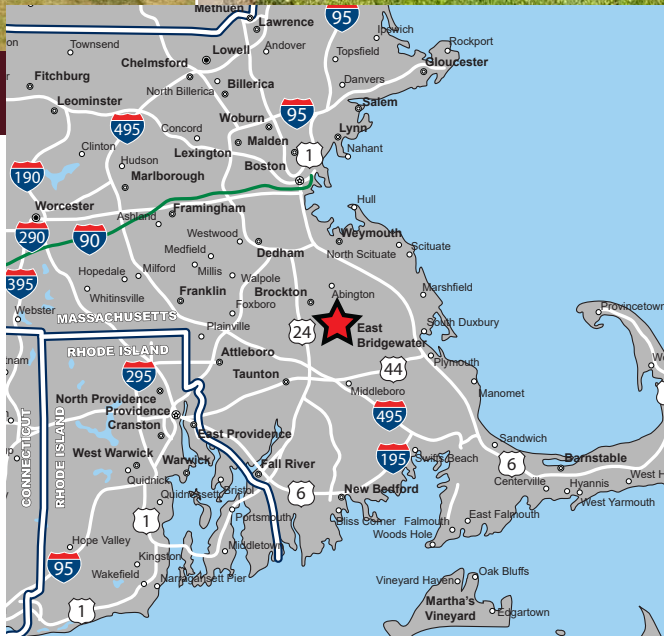


FORMER T. J. SMITH'S VICTORIAN HOUSE

13 Cross Street, East Bridgewater, Massachusetts



AVAILABLE FOR SALE

PROPERTY HIGHLIGHTS

- » 8,650 SF Building
- » 1.3 Acre Site
- » Full Service Function Facility with Restaurant, Tavern and Chapel
- » Outdoor Function Area
- » Ample Parking
- » Beautiful Landscaped Grounds
- » Fully-Equipped - "Turn Key"
- » Additional Development Potential
- » Ideal for Daycare, Church, Medical, Office



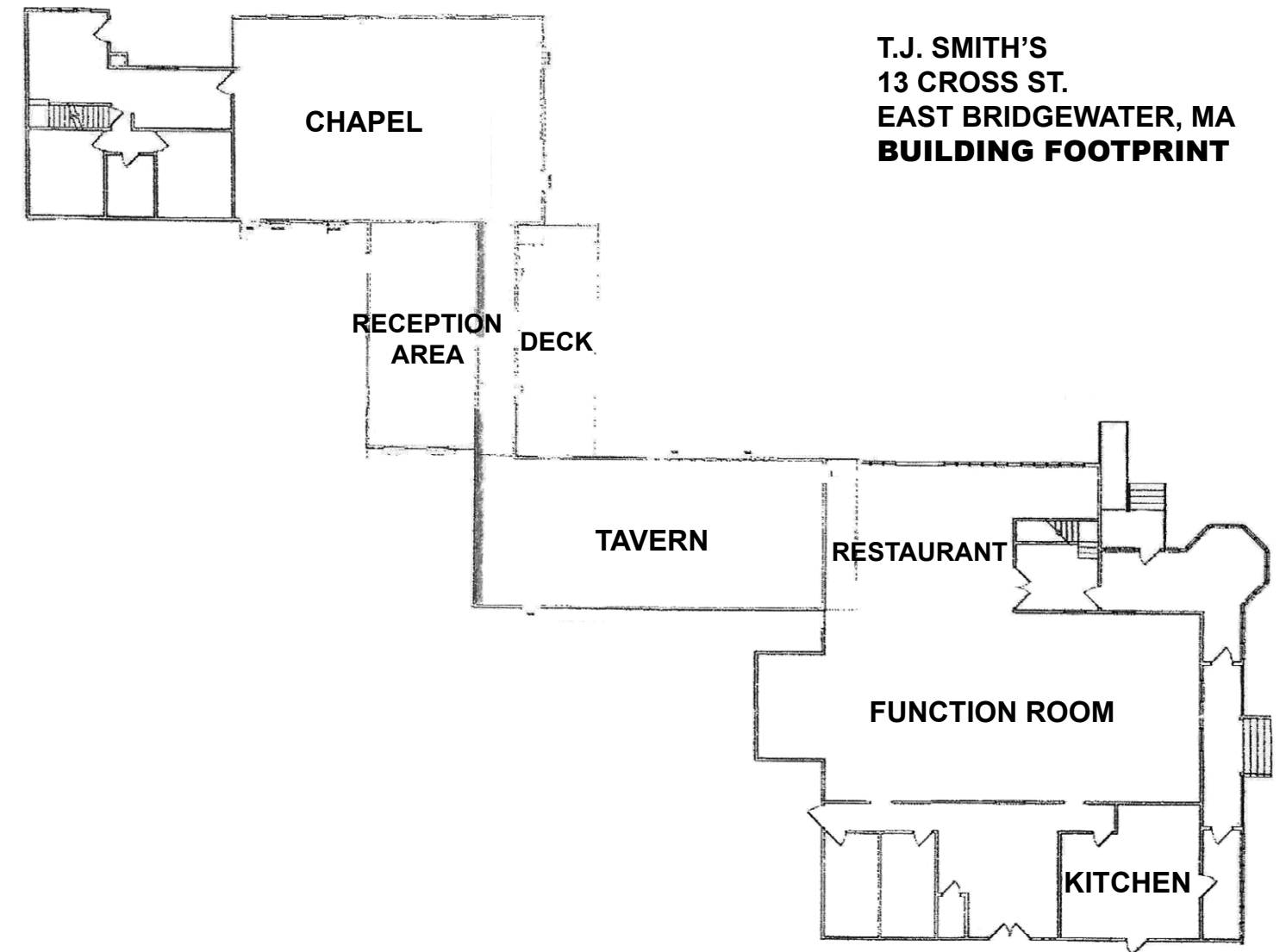
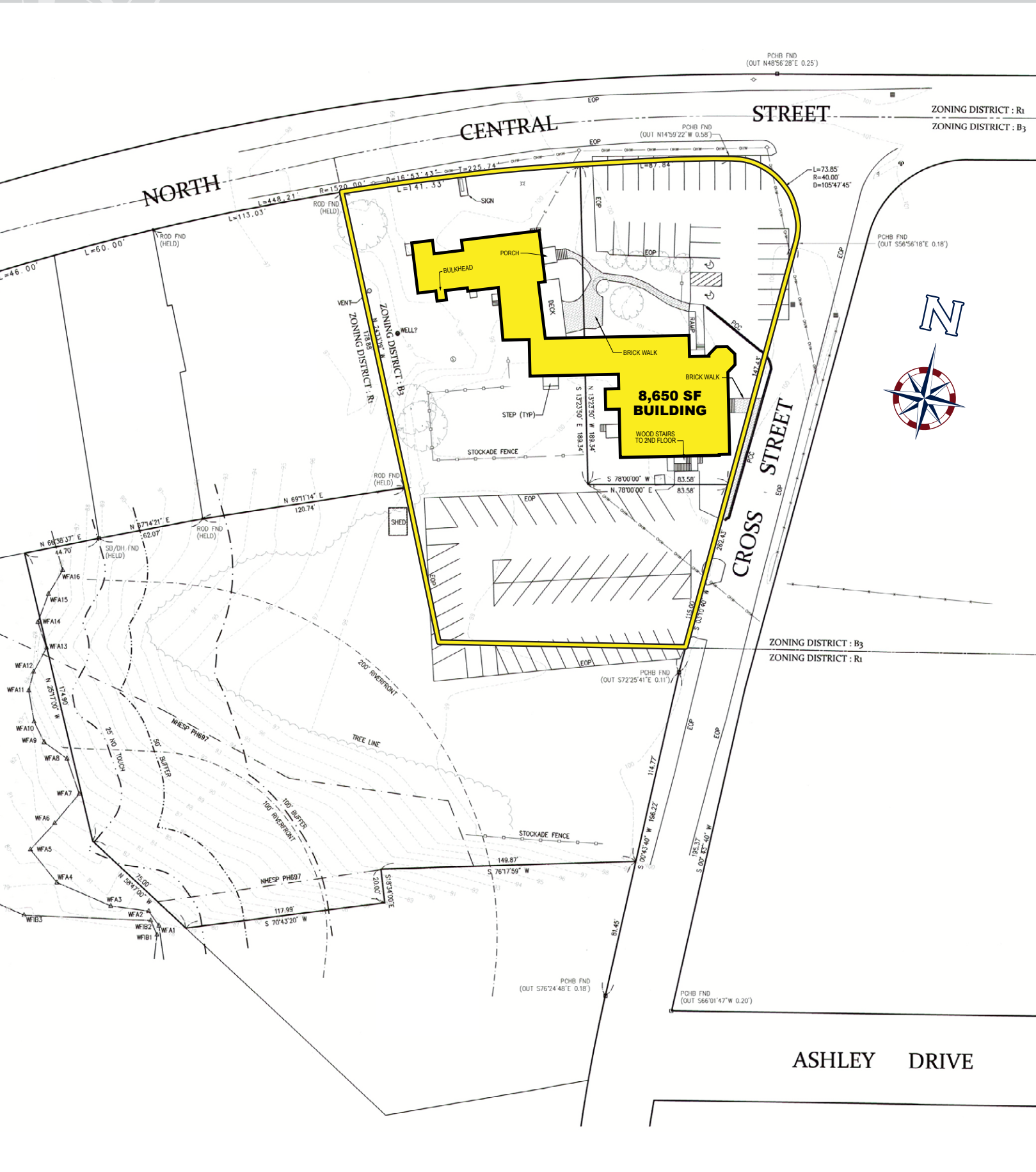
FORMER T. J. SMITH'S VICTORIAN HOUSE

13 Cross Street, East Bridgewater, Massachusetts

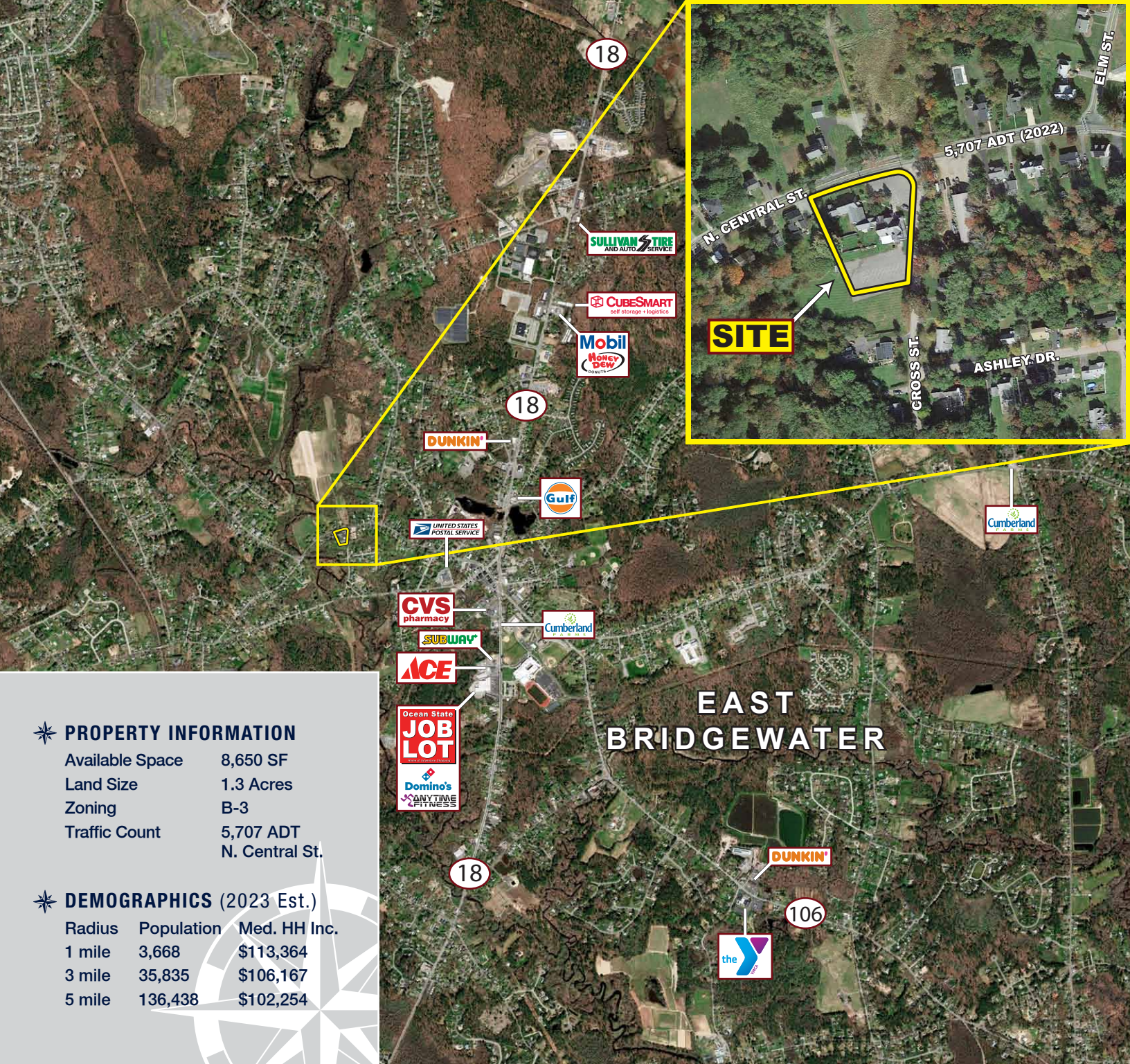


FORMER T. J. SMITH'S VICTORIAN HOUSE

13 Cross Street, East Bridgewater, Massachusetts



**T.J. SMITH'S
13 CROSS ST.
EAST BRIDGEWATER, MA
BUILDING FOOTPRINT**



✦ **PROPERTY INFORMATION**

Available Space 8,650 SF
 Land Size 1.3 Acres
 Zoning B-3
 Traffic Count 5,707 ADT
 N. Central St.

✦ **DEMOGRAPHICS (2023 Est.)**

Radius	Population	Med. HH Inc.
1 mile	3,668	\$113,364
3 mile	35,835	\$106,167
5 mile	136,438	\$102,254

Former T. J. Smith's Victorian House - 13 Cross Street, East Bridgewater, MA



FOR MORE INFORMATION CONTACT:

Vin Albanese
 781.849.9013 (Office) + 617.413.1193 (Cell)
 valbanese@easternretail.com

P 781.849.9010 + F 781.849.9050 + www.easternretail.com + 25 Braintree Hill Office Park, Suite 305 + Braintree, MA 02184

The information above has been obtained from sources believed reliable. While we do not doubt its accuracy, we have not verified it and make no guarantee, warranty or representation about it. It is your responsibility to independently confirm its accuracy and completeness. Any projections, opinions, assumptions or estimates used are for example only and do not represent the current or future performance of the property. The value of this transaction to you depends on tax and other factors, which should be evaluated by your tax and financial advisors. You and your advisors should conduct a careful, independent investigation of the property to determine to your satisfaction, the suitability of the property for your needs.