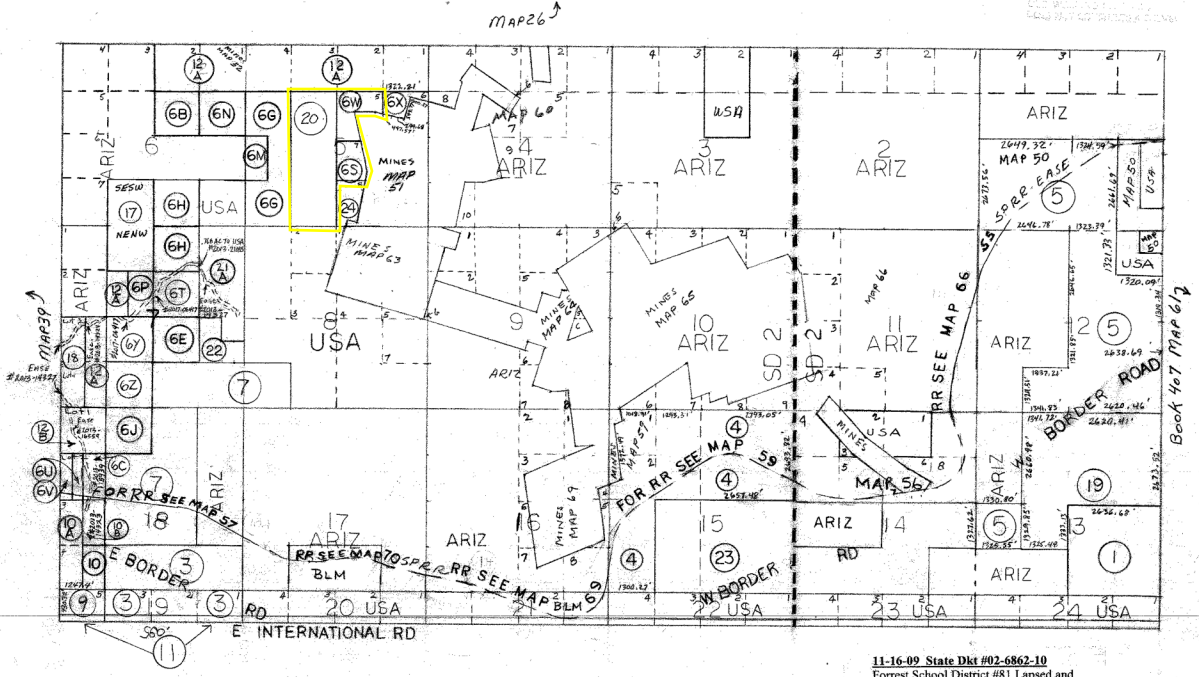


TWP 24 RGE 25

BOOK 101
MAP 49



REPUBLIC OF MEXICO

11-16-09 State Dkt #02-6862-10
Forrest School District #81 Lapsed and
Attached to BUSD #2 per Resolution
#09-44 recorded at #2009-18602. For
Tax year 2010.

SCALE 1" = 2640'

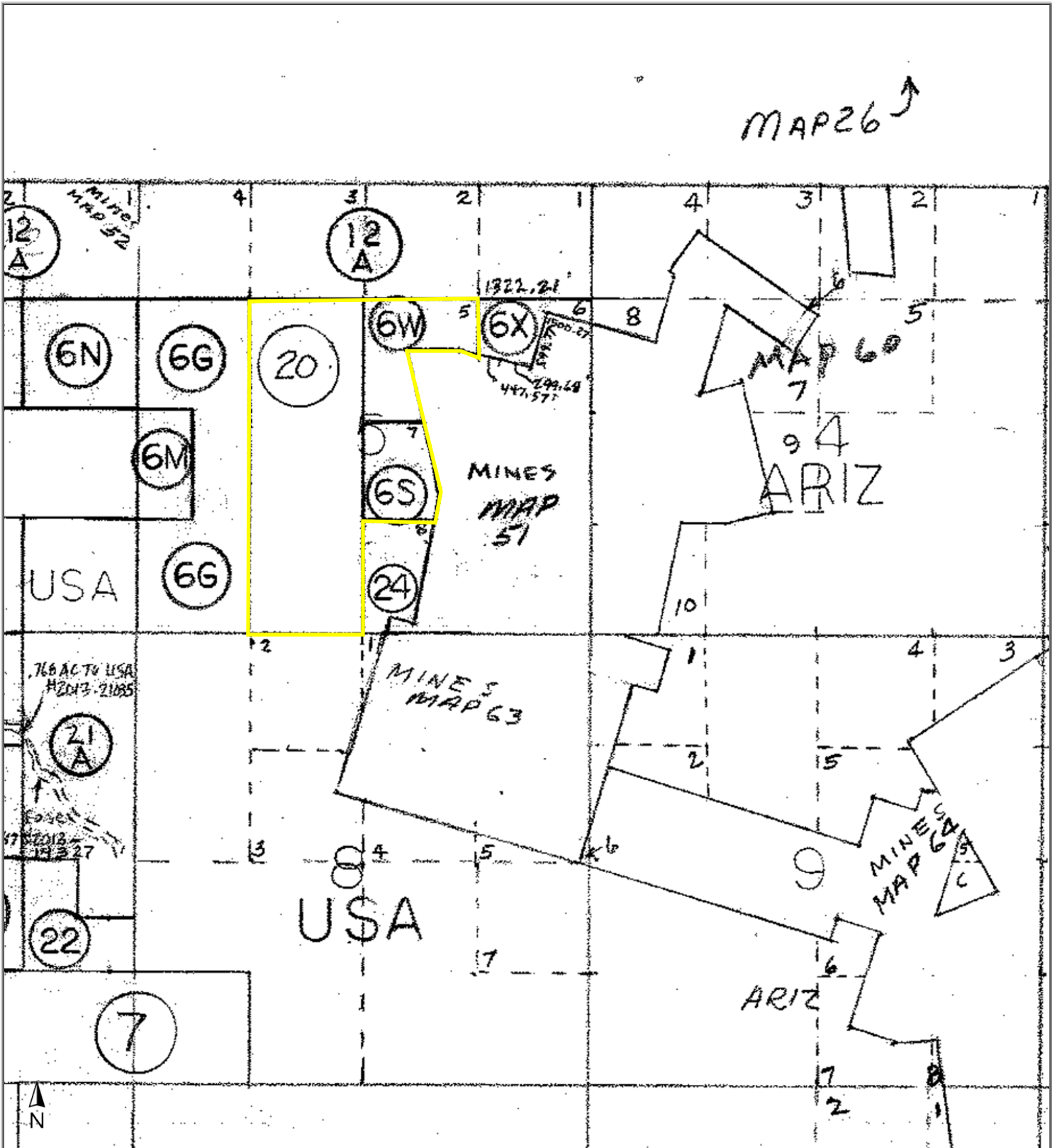
COCHISE



Pioneer Title Agency, ParcelID: 101-49-006S
Bisbee AZ 85603

COMMITMENT TO SERVICE

This map/plat is being furnished as an aid in locating the herein described land in relation to adjoining streets, natural boundaries and other land, and is not a survey of the land depicted. Except to the extent a policy of title insurance is expressly modified by endorsement, if any, the company does not insure dimensions, distances, location of easements, acreage or other matters shown thereon.



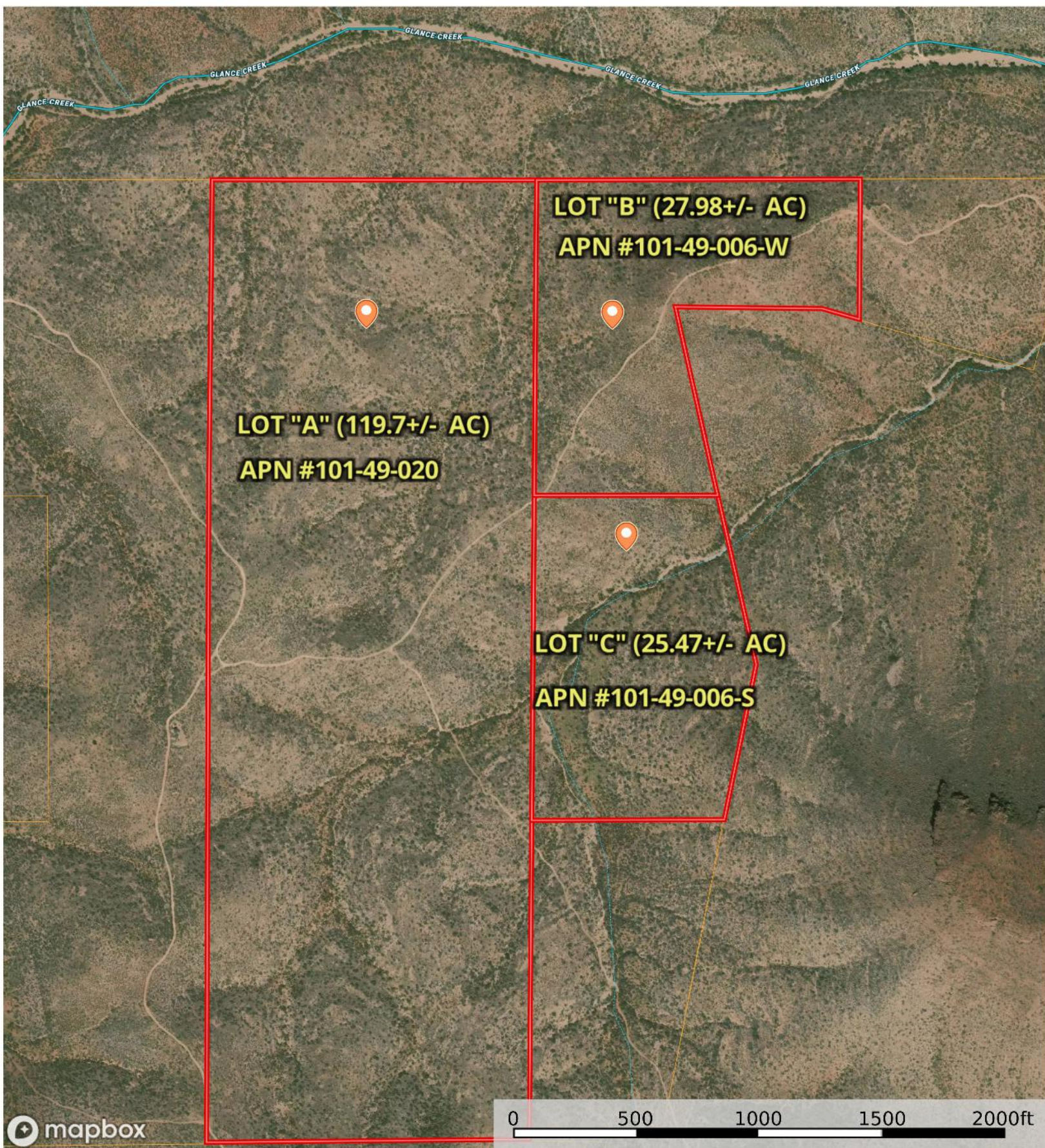
Pioneer Title Agency, ParcelID: 101-49-006S
 Bisbee AZ 85603

COMMITMENT TO SERVICE

This map/plat is being furnished as an aid in locating the herein described land in relation to adjoining streets, natural boundaries and other land, and is not a survey of the land depicted. Except to the extent a policy of title insurance is expressly modified by endorsement, if any, the company does not insure dimensions, distances, location of easements, acreage or other matters shown thereon.

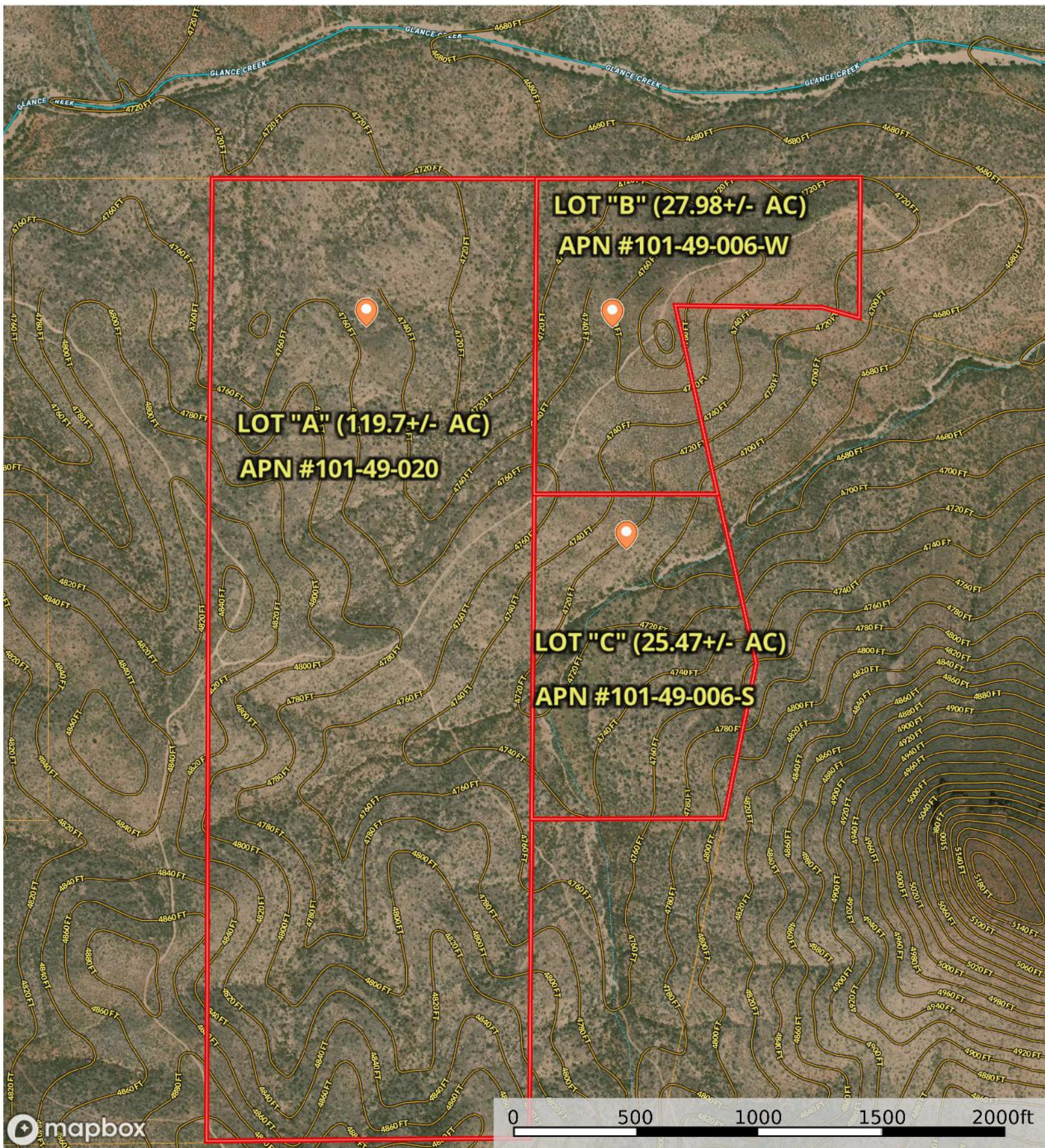
Triumph Property LLC (173 Acres)

Cochise County, Arizona, 173.15 AC +/-



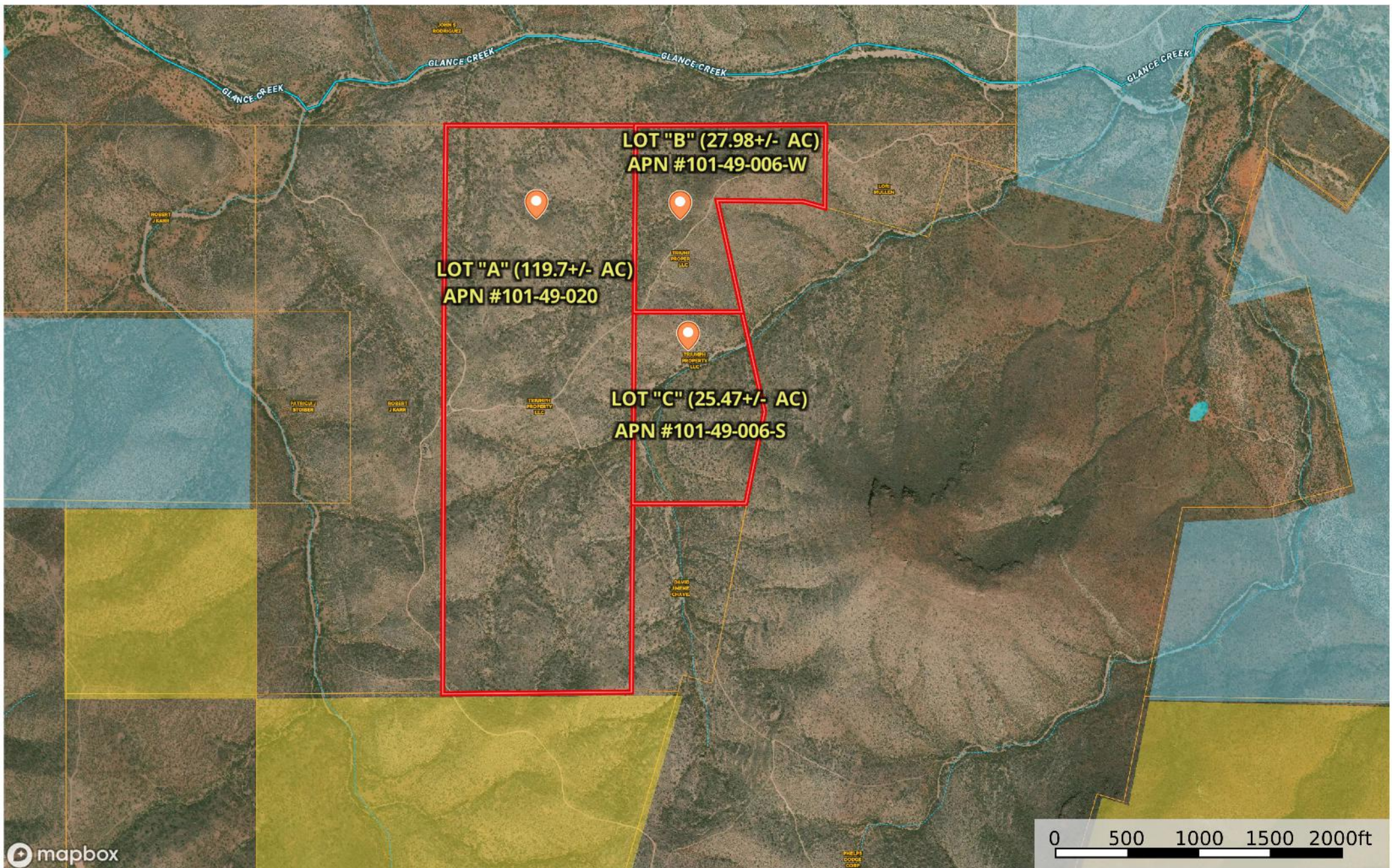
The information contained herein was obtained from sources deemed to be reliable. Land id™ Services makes no warranties or guarantees as to the completeness or accuracy thereof.

Triumph Property LLC (173 Acres)
 Cochise County, Arizona, 173.15 AC +/-

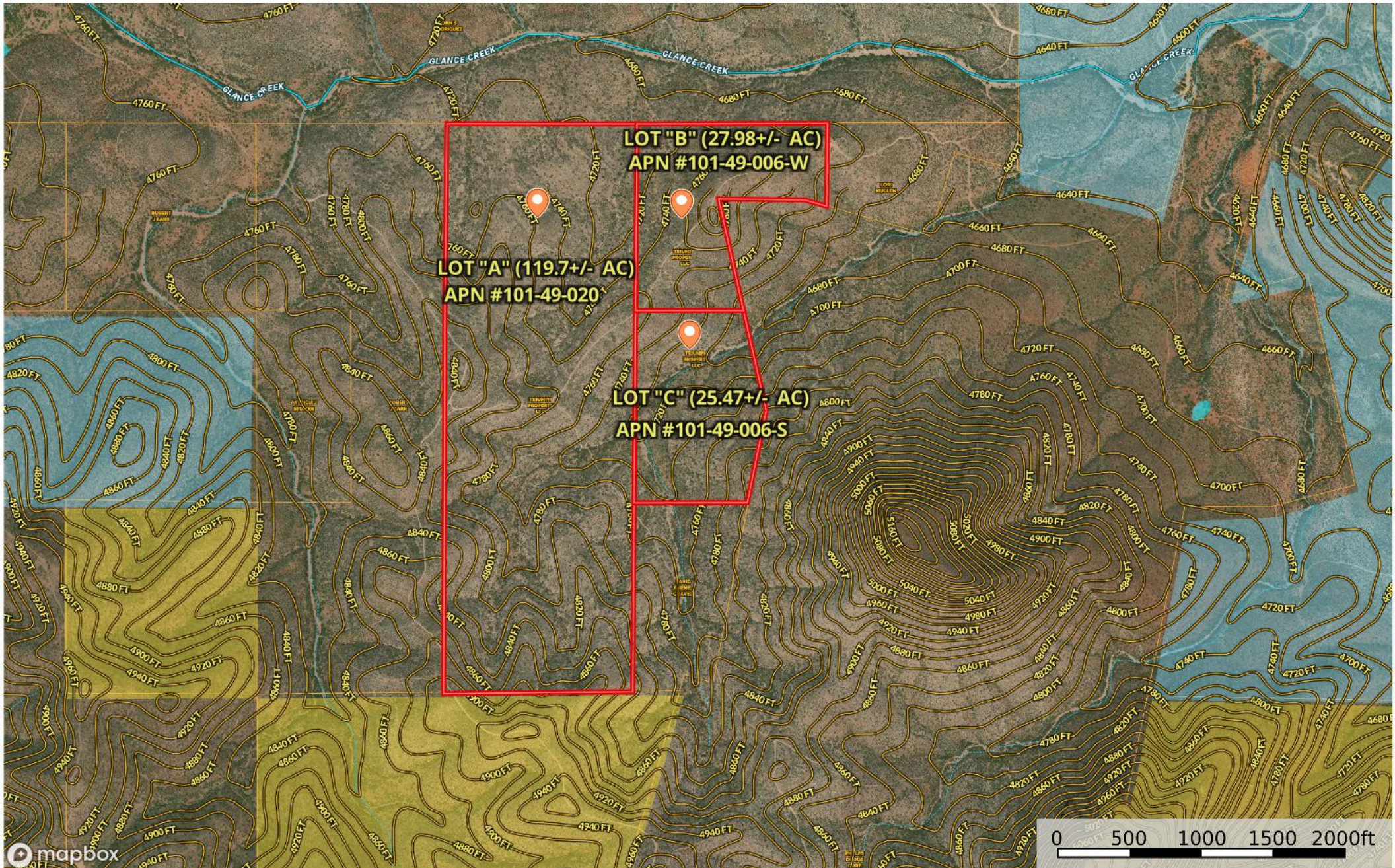


Triumph Property LLC (173 Acres)

Cochise County, Arizona, 173.15 AC +/-



Triumph Property LLC (173 Acres)
 Cochise County, Arizona, 173.15 AC +/-

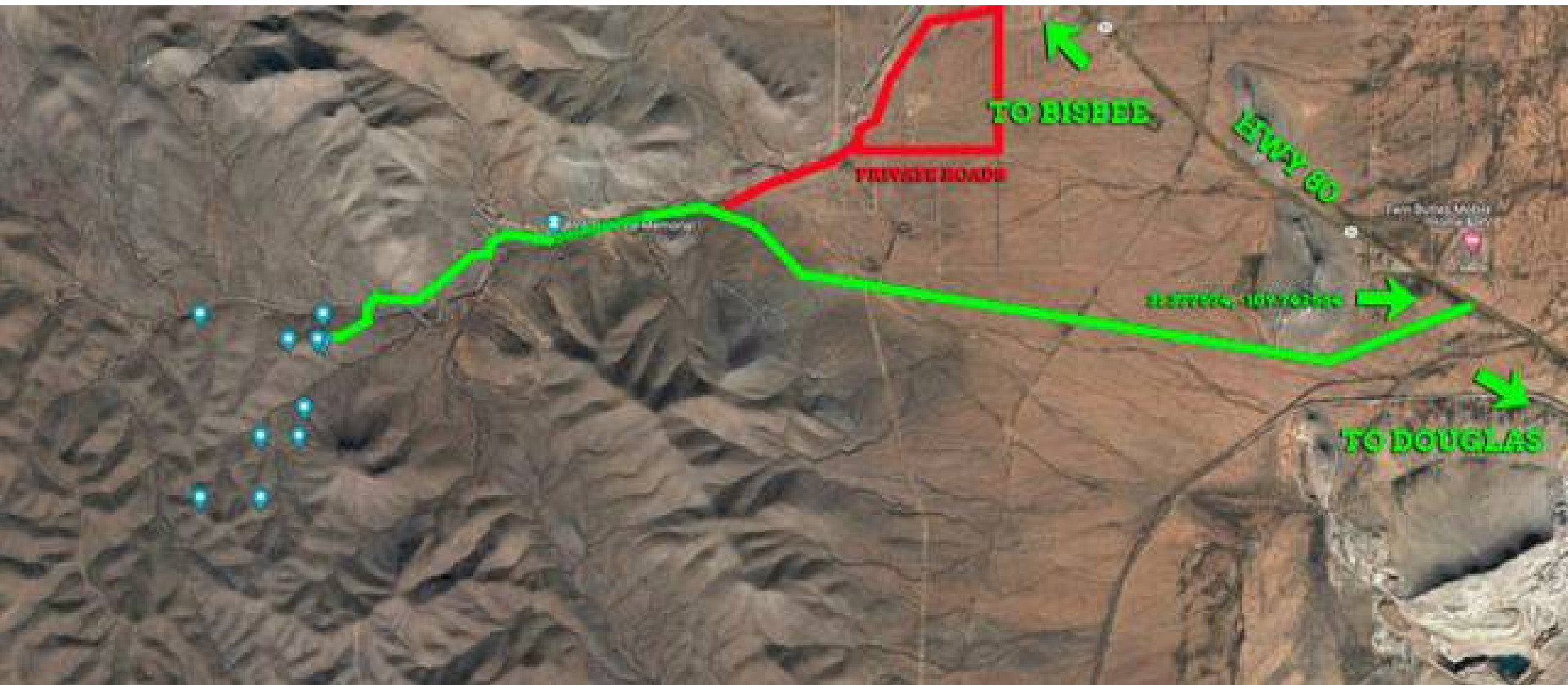


LOT "C" (25.47 +/- AC)	LOT "B" (27.98 +/- AC)	LOT "A" (119.7 +/- AC)	Boundary	Forest Service	State Land	Fish and Wildlife	National Park	Other	BLM	Local Government	Stream, Intermittent	River/Creek	Water Body
Voltage Unavailable	Voltage 0 - 9 KV	Voltage 100 161 KV	Voltage 220 287 KV	Voltage 345 KV	Voltage 500 KV	Voltage 735 KV+							

Triumph Property LLC (173 Acres)

Cochise County, Arizona, 173.15 AC +/-





TO BISBEE

PRIVATE ROADS

HWY 60

STERRIS, IDIOWOOD

TO DOUGLAS