

SUB-LEASE

OFFICE/ COUNSELING SPACE AVAILABLE

1711 Main St | Vancouver, WA 98660



900 Washington St, Suite 850, Vancouver, WA
360.597.0574 | www.fg-cre.com



PROPERTY HIGHLIGHTS

- Turnkey counseling sublease available through December 31, 2029
- \$24.00/SF Modified Gross
- ±2,400 SF built out for counseling use
- Six (6) private counseling offices
- Large staff break room
- Six (6) on-site parking spaces at \$60/month each
- Direct access from adjacent parking lot
- Strong main street visibility

FOR MORE INFORMATION:

Reilly Hennessey
360.597.0565 | rhennessey@fg-cre.com



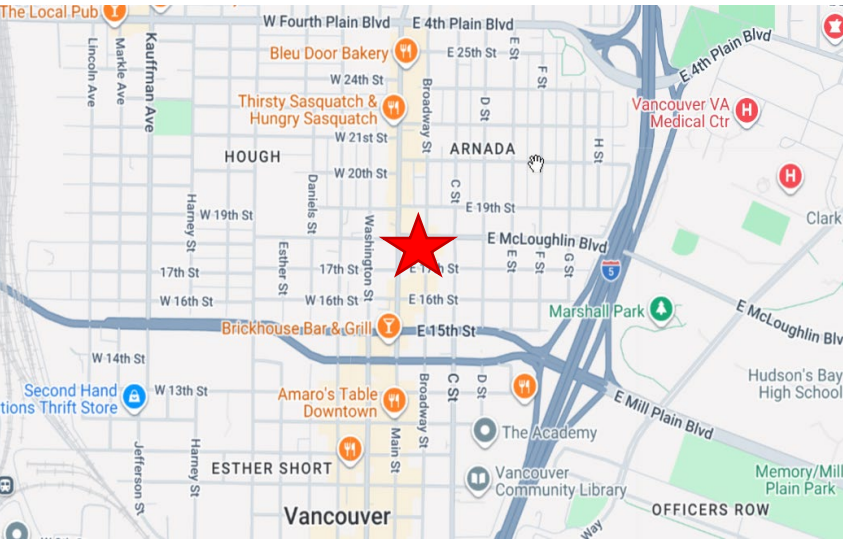
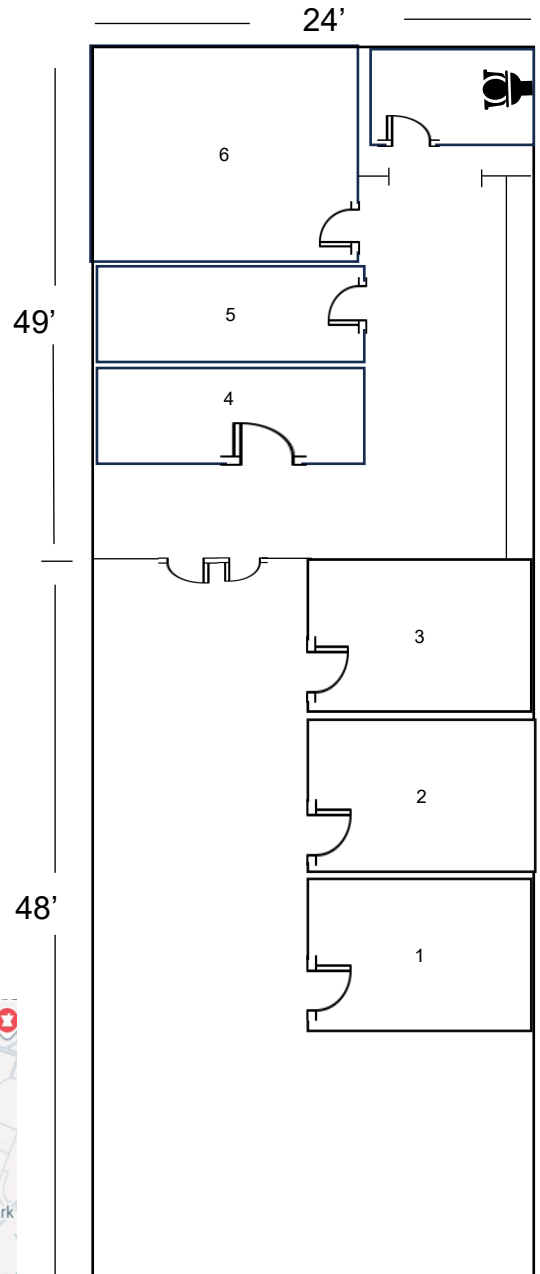
SUB-LEASE

OFFICE/ COUNSELING SPACE AVAILABLE

1711 Main St | Vancouver, WA 98660



900 Washington St, Suite 850, Vancouver, WA
360.597.0574 | www.fg-cre.com



This statement with the information it contains is given with the understanding that all the negotiations relating to the purchase, rental or leasing of the property described above shall be conducted through this office. The above information, while not guaranteed, has been secured from sources we believe to be reliable.