

Professional Office Building for **Sale or Lease**

581 Skippack Pike

Blue Bell, PA



[Click here for an interactive map of local amenities.](#)

NAI Geis Realty
Group, Inc.
naigeis.com

Dana Wilber
Vice President
(215) 701-3266
dwilber@geisrealty.com

James You
Senior Associate
(610) 975-4291
jyou@geisrealty.com

996 Old Eagle School Road
Suite 1117
Wayne, PA 19087
(610) 989-300

Sale or Lease

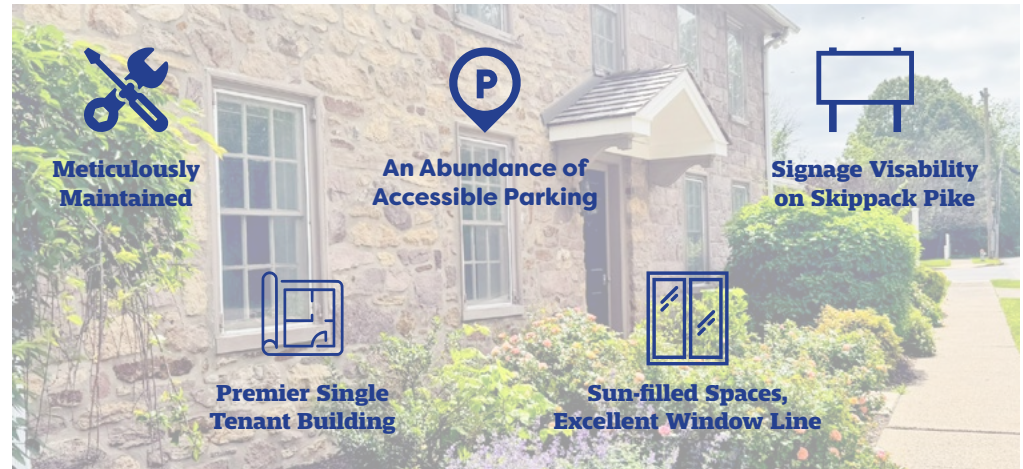
581 Skippack Pike, Blue Bell, PA

Property Highlights

- Premier office building available for the first time in over 25 years
- 5,736 SF single-tenant building available for sale or lease
- Suites can be made available as small as 1,434 square feet
- Prominent signage opportunities along Skippack Pike, seeing 16,300 vehicles per day
- Timeless farmhouse architectural design and curb appeal
- Abundant parking
- Private entrances and in-suite restrooms

Nearby Amenities

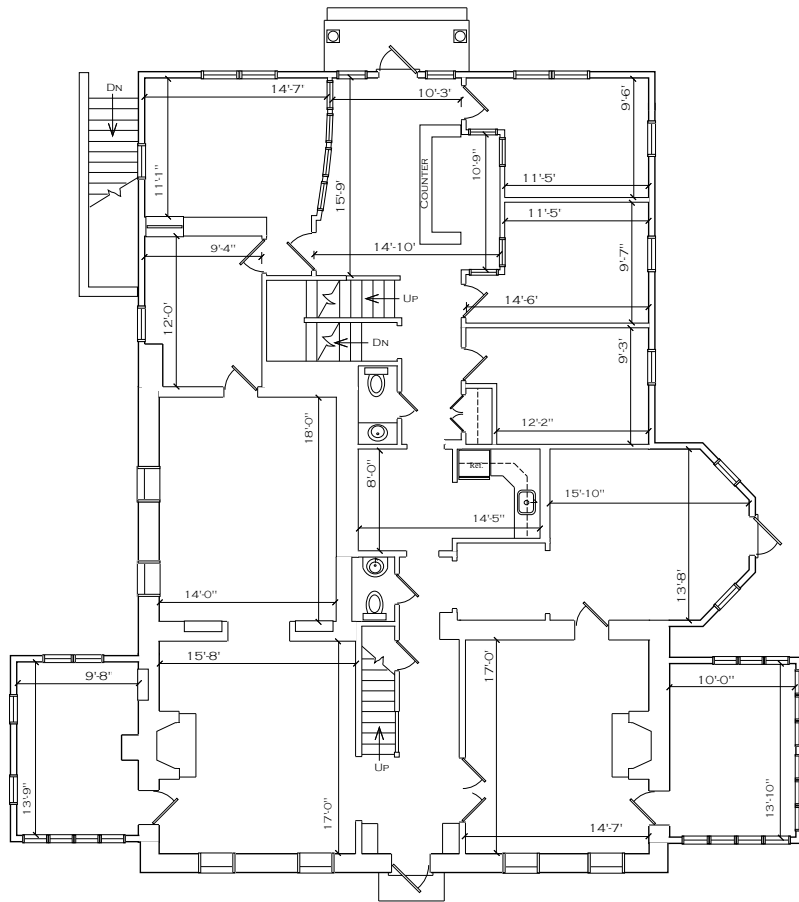
- Strategically positioned with access to southern PA's highway system
 - PA Turnpike
 - I-476 (Blue Route & NE Extension)
 - I-76 (Schuylkill Expressway)
 - Route 202
- 3 miles from Plymouth Meeting Mall
- Local eateries and fine dining establishments including Blue Bell Inn and Panache
- Numerous day care alternatives
- Variety of hotels and extended stay options
- Multiple country clubs including Bluestone, Cedarbrook, and Blue Bell Country Clubs



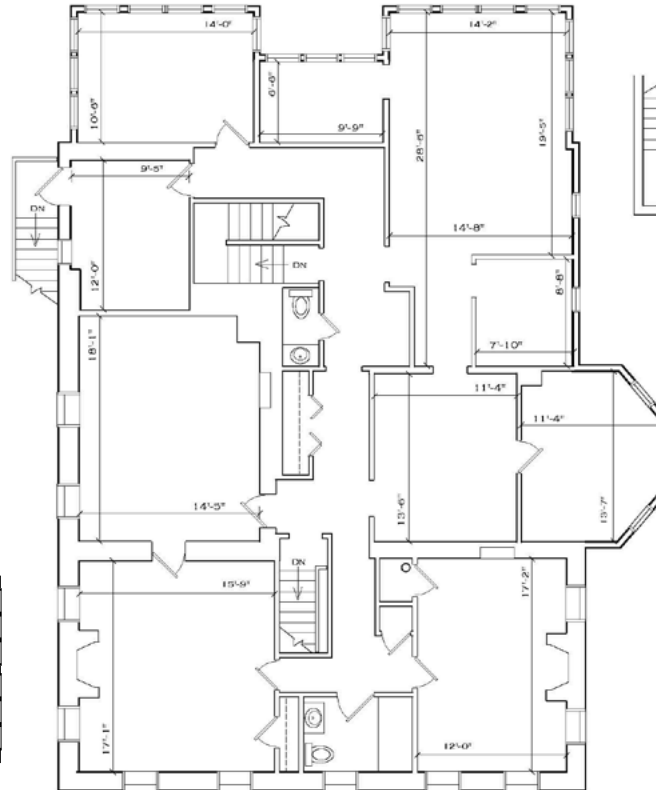
Sale or Lease

581 Skippack Pike, Blue Bell, PA

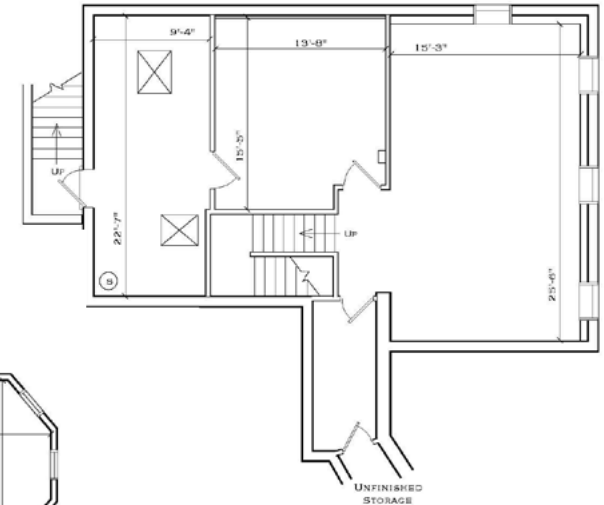
First Floor



Second Floor



Basement



Sale or Lease

581 Skippack Pike, Blue Bell, PA



NAI Geis Realty
Group, Inc.
naigeis.com

Dana Wilber
Vice President
(215) 701-3266
dwilber@geisrealty.com

James You
Senior Associate
(610) 975-4291
jyou@geisrealty.com

996 Old Eagle School Road
Suite 1117
Wayne, PA 19087
(610) 989-300

Sale or Lease

581 Skippack Pike, Blue Bell, PA



NAI Geis Realty
Group, Inc.
naigeis.com

Dana Wilber
Vice President
(215) 701-3266
dwilber@geisrealty.com

James You
Senior Associate
(610) 975-4291
jyou@geisrealty.com

996 Old Eagle School Road
Suite 1117
Wayne, PA 19087
(610) 989-300