



AVISON YOUNG

Office Space For Sublease

2050 West Sam Houston Parkway South
Suite 1100
Houston, TX 77042

Plug and play in Westchase

- **Available Immediately - Motivated Sublessor!**
- 20,212 RSF with elevator exposure
- Furniture available
- Mix of open and closed spaces
- Middle of the building stack with great views
- Beltway 8 frontage, near I-10
- Term: Through 5/31/2028
- Operating expense: \$18.11/SF (2025)



Onsite security



Onsite gym



Onsite conference center



Secure garage parking



**Get more
information**

Josh Morrow
Principal
+1 713 304 0393

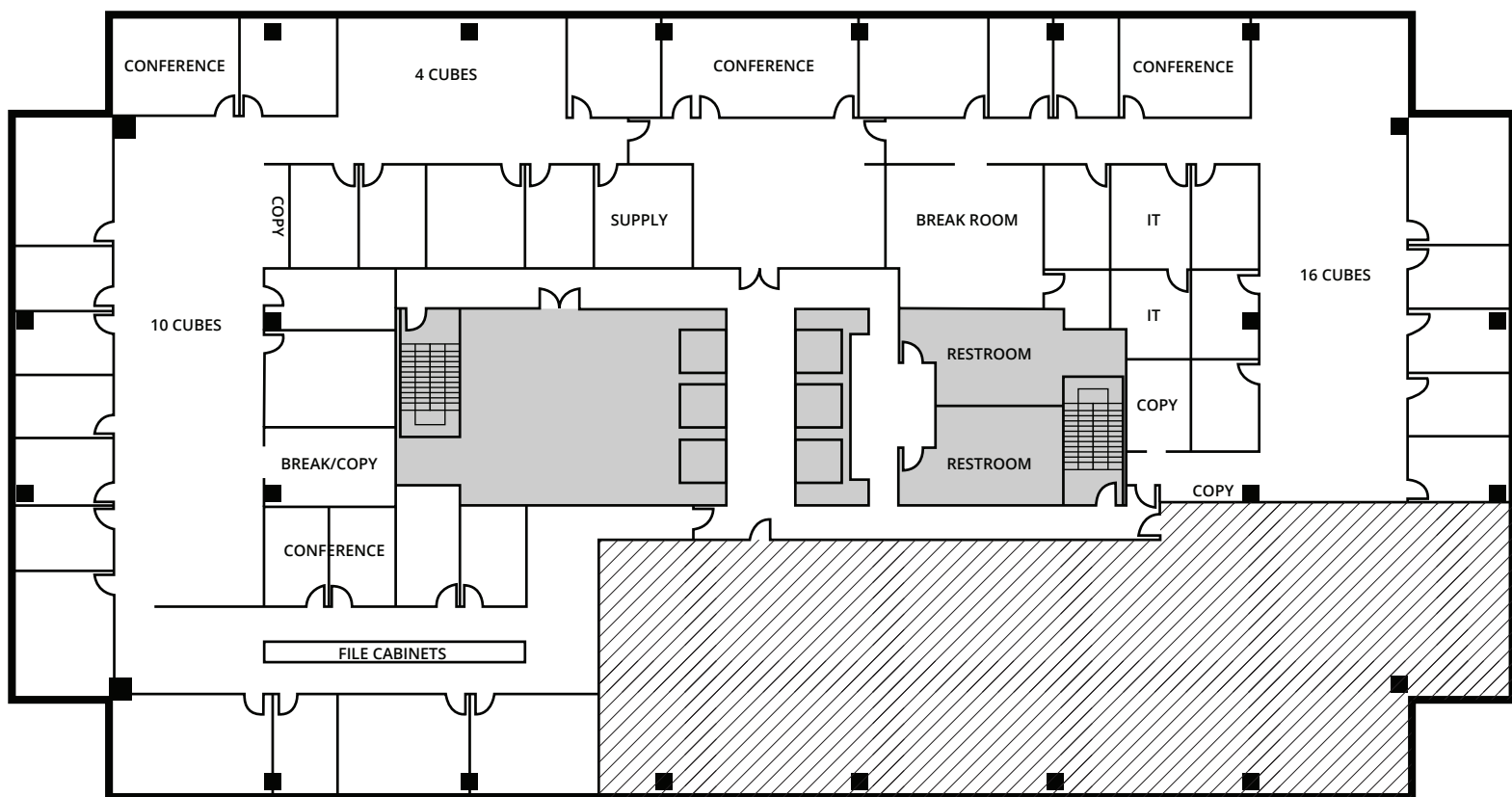
Drew Coupe, SIOR
Principal
+1 832 226 6726

Anthony Squillante
Principal
+1 713 447 8368

avisonyoung.com

Office Space For Sublease

Two BriarLake Plaza
2050 West Sam Houston Parkway South
Houston, TX 77042



**Get more
information**

Josh Morrow
Principal
+1 713 304 0393

Drew Coupe, SIOR
Principal
+1 832 226 6726

Anthony Squillante
Principal
+1 713 447 8368

avisonyoung.com

Office Space For Sublease

Two BriarLake Plaza
2050 West Sam Houston Parkway South
Houston, TX 77042



**Get more
information**

Josh Morrow
Principal
+1 713 304 0393

Drew Coupe, SIOR
Principal
+1 832 226 6726

Anthony Squillante
Principal
+1 713 447 8368

avisonyoung.com