

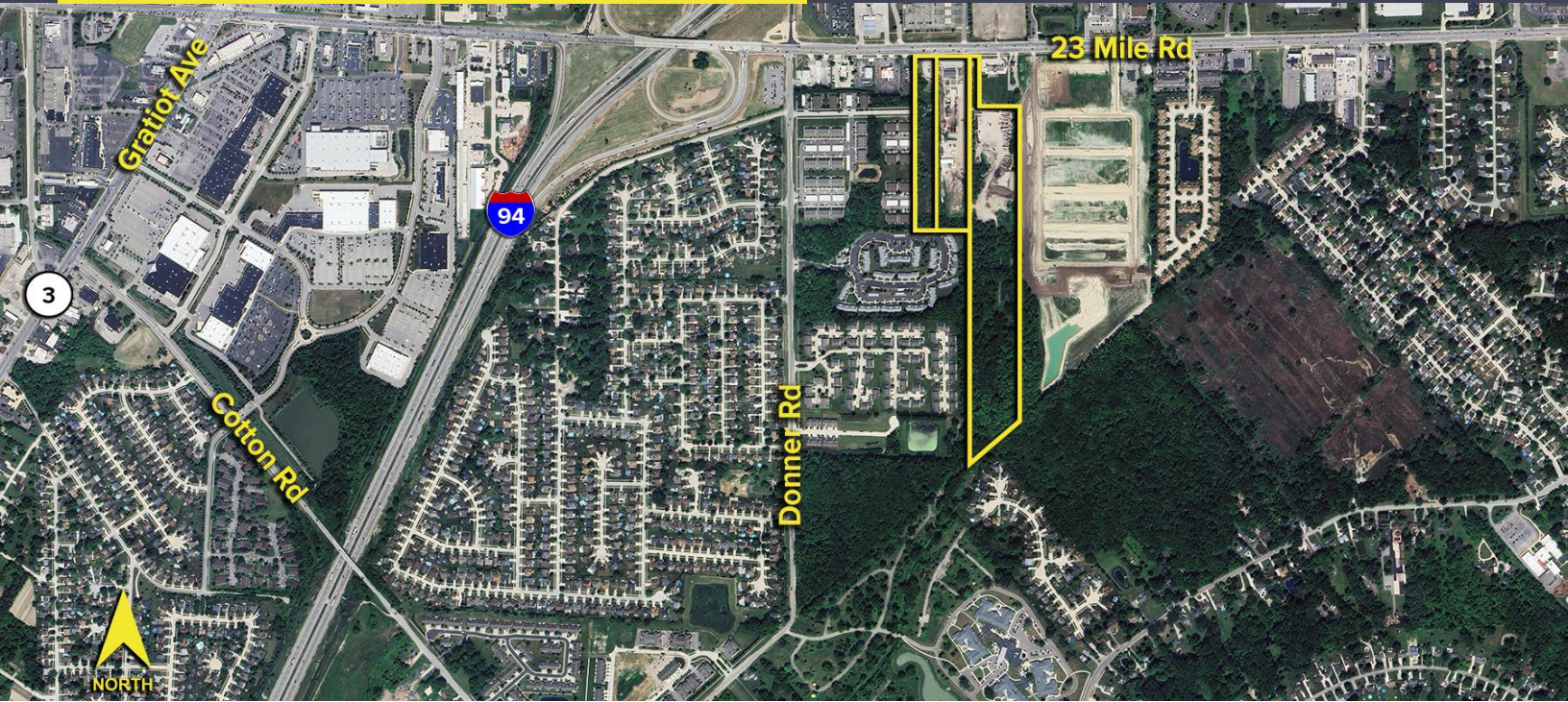
29430-29500 23 MILE ROAD
CHESTERFIELD TWP., MICHIGAN



**SIGNATURE
ASSOCIATES**
KNOW SIGNATURE | KNOW RESULTS

LAND FOR SALE

1.00-33.00 Acres Available



PROPERTY FEATURES

- 1.00 – 33.00 acres available
- Three parcels total
- Zoned C-3, RM-MU
- Rare Twenty-Three Mile Road exposure with residential and multi-family behind
- Pricing is dependent on the acreage of interest
- Seller will split the parcels



For more information, please contact:

BEN WILKEMEYER

(248) 359 0624

bwilkiemeyer@signatureassociates.com

PAUL SAAD

(248) 359 0652

psaad@signatureassociates.com

PETER VANDERKAAY

(248) 359 3837

pvanderkaay@signatureassociates.com

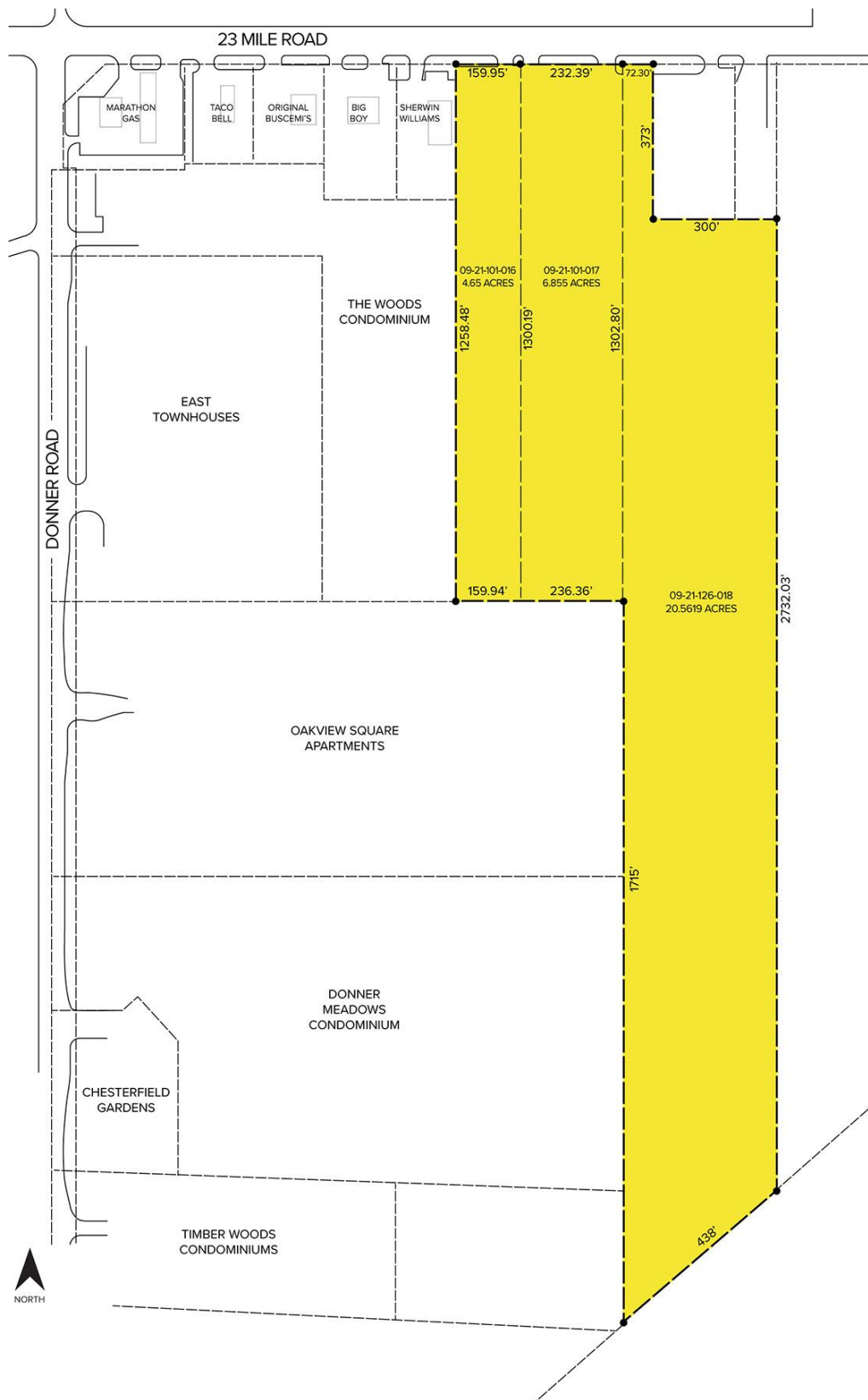
Information is subject to verification and no liability for errors or omissions is assumed. Price is subject to change and listing withdrawal.

29430-29500 23 Mile Rd. – Chesterfield Twp., Michigan

Land For Sale

1.00-33.00
Acres
AVAILABLE

Site Plan



For more information, please contact:

BEN WILKIEMEYER
(248) 359 0624

PAUL SAAD
(248) 359 0652

PETER VANDERKAAY
(248) 359 3837

SIGNATURE ASSOCIATES
One Towne Square, Suite 1200
Southfield, MI 48076
www.signatureassociates.com