

# FOR LEASE - WAREHOUSE SPACE WITH RAIL

1499 E Philadelphia St  
York, PA 17403



**JERSEY  
HOLDINGS**

**Matt Leonelli**

VP of Leasing and Sales

Cell: (908) 220-9861

MattL@jerseyholdings.com

[www.jerseyholdings.com](http://www.jerseyholdings.com)

922 State Route 33, Building 8, Suite 802  
Freehold, NJ 07728

## BUILDING SIZE

176,000 SF

## AVAILABLE SPACE

20,000-176,000 SF

## AVAILABILITY

Immediate

## ASKING RATE

\$5.50 per SF NNN

## ZONING

IP- Industrial Park

## LOADING

6 Docks + 6 Drive Ins  
Loading Expansion Possible

## CEILINGS

16' Clear

## POWER

Heavy, 3 Phase

## COLUMNS

Clear Span

## LOT SIZE

18.45 AC Fenced Lot

## SPRINKLER

Wet

## PARKING

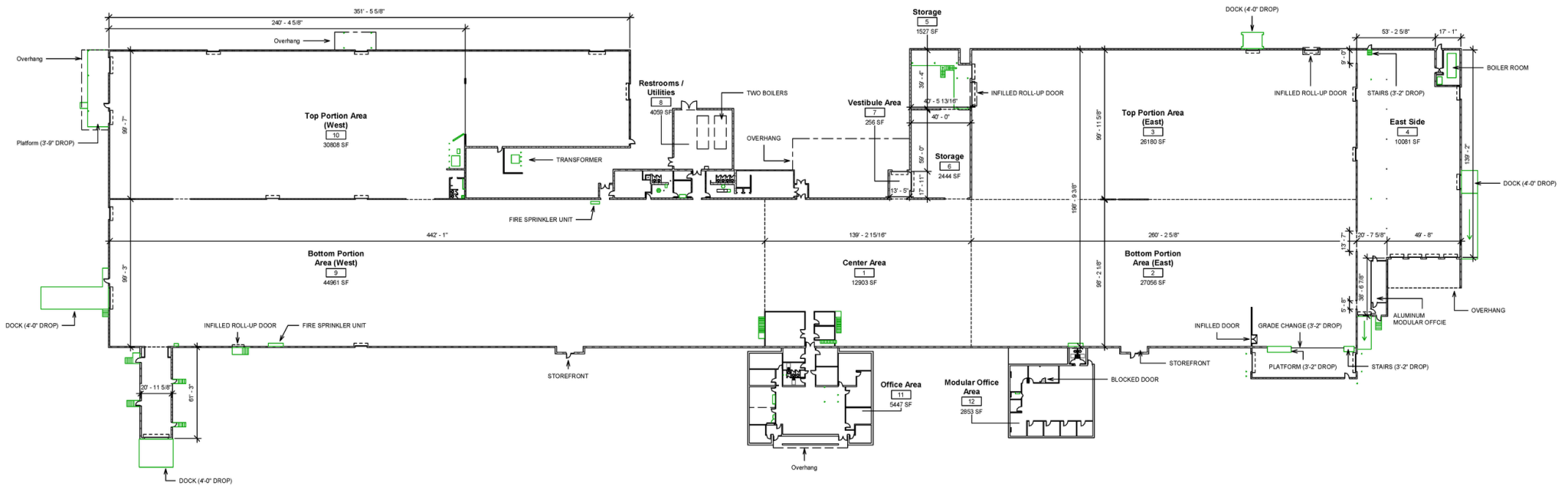
187 Spaces

## CONTACT US



# FLOOR PLAN

1499 E Philadelphia St

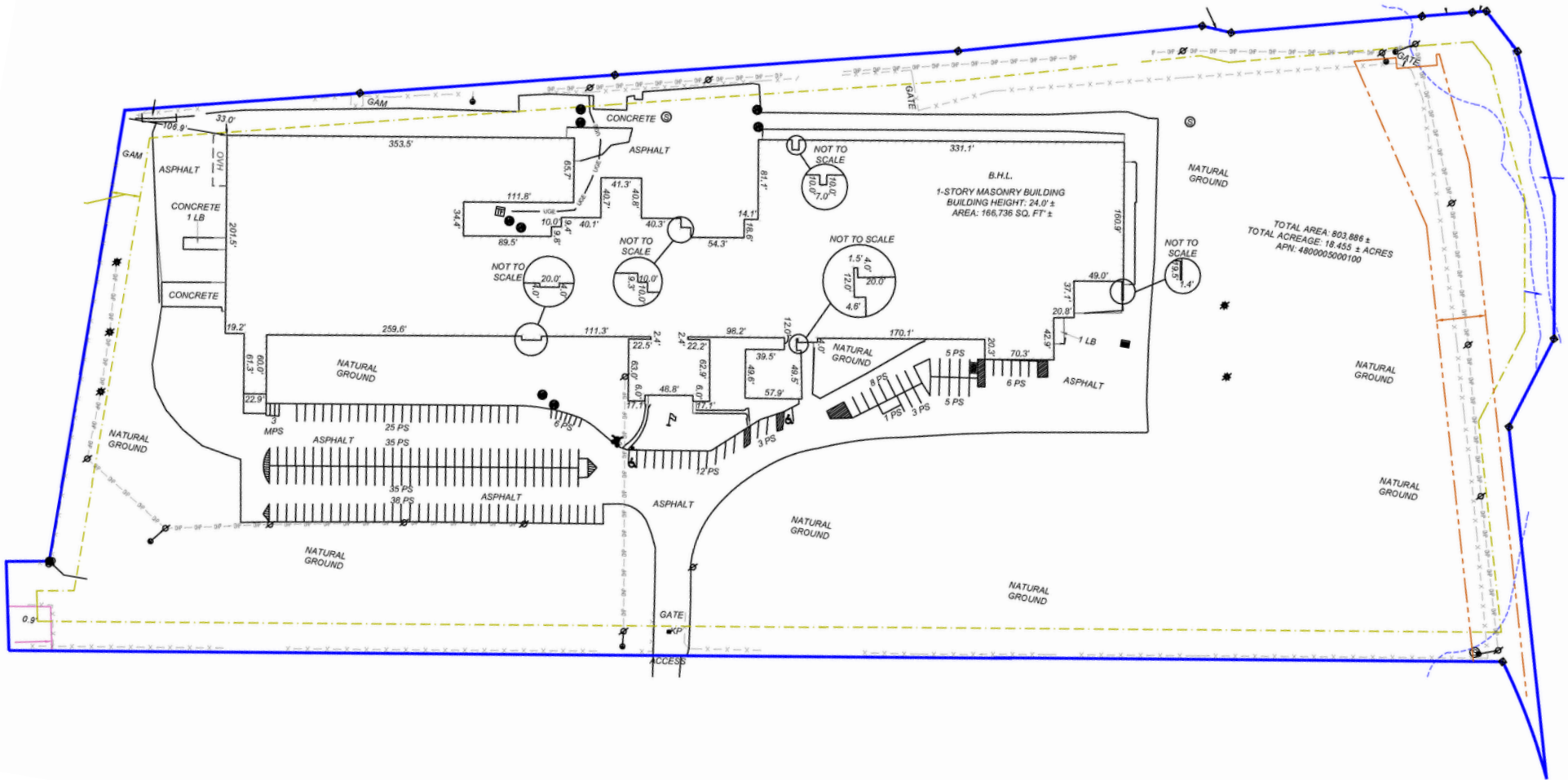


Level 1 Floor Plan - Rentable  
1" = 30'-0"



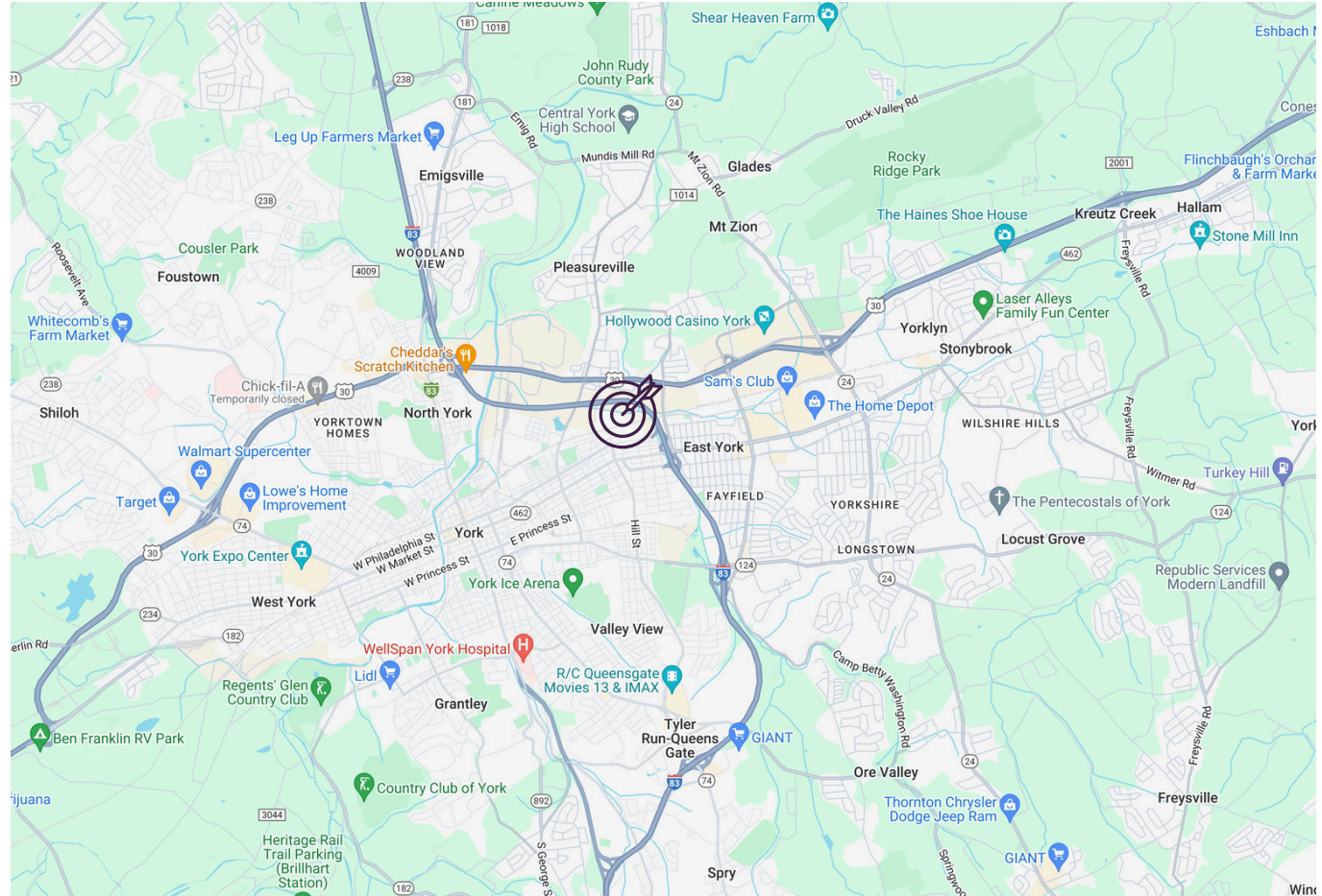
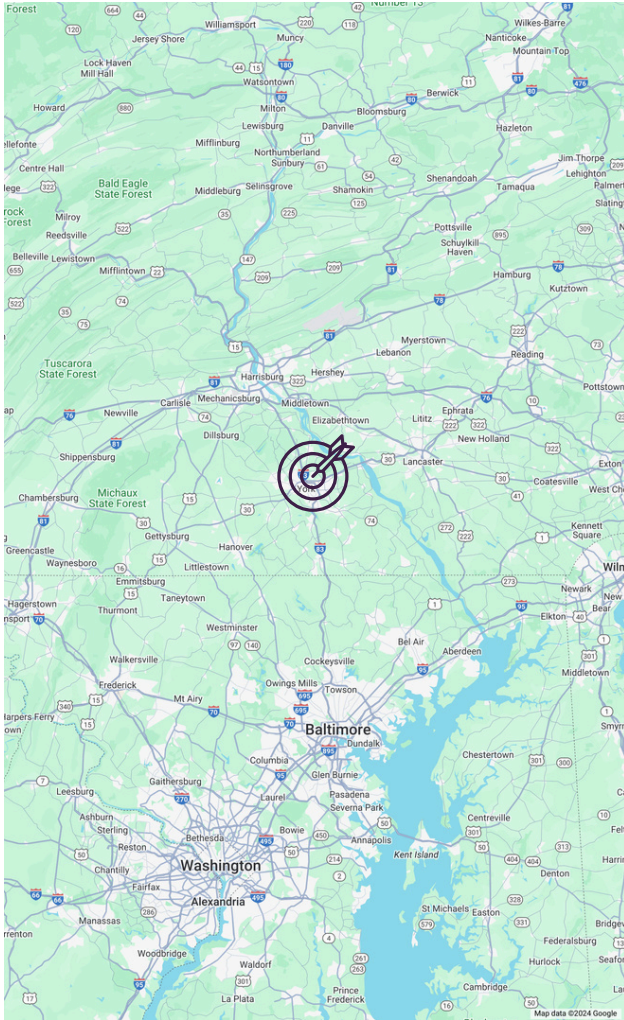
# SITE PLAN

1499 E Philadelphia St



# LOCATION MAP

## 1499 E Philadelphia St



For Additional Info Contact: Matt Leonelli - [MattL@jerseyholdings.com](mailto:MattL@jerseyholdings.com) - (908) 220-9861



The information contained in this brochure is for general informational purposes only. While we strive to provide accurate and up-to-date information, we make no warranties or representations of any kind, express or implied, about the completeness, accuracy, reliability, suitability, or availability with respect to the brochure or the information, products, services, or related graphics contained in the brochure for any purpose. Any reliance you place on such information is therefore strictly at your own risk. Prices, availability, and specifications are subject to change without notice. Images, floor plans, and other visuals are for illustrative purposes only and may not accurately represent the final product. Prospective buyers or tenants should not rely on the information contained in this brochure without independently verifying its accuracy and consulting with professional advisors. We shall not be liable for any loss or damage including without limitation, indirect or consequential loss or damage, or any loss or damage whatsoever arising from loss of data or profits arising out of, or in connection with, the use of this brochure.