

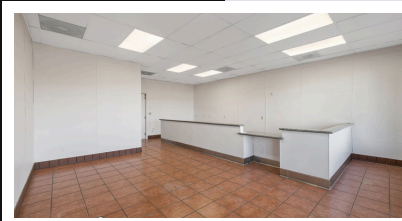
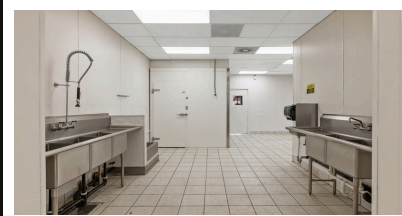
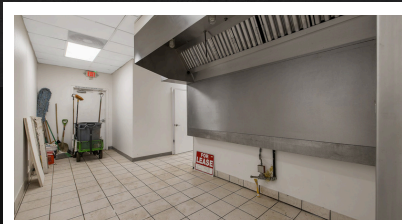


5 2 5 W . B A R D S L E Y
T U L A R E , C A

FOR
LEASE

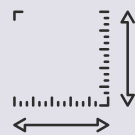
PER
MONTH

\$2,424



Prime 1,385 sq ft restaurant-ready space in a bustling shopping center at Bardsley and E St. Features include a customer area with a serving counter and bathroom, a walk-in fridge, a hood vent, and a washing station. The interior is fully tiled and available for immediate occupancy! Ideal for a new food establishment looking for a high-traffic location. Don't miss the opportunity to set up your dream restaurant in this thriving area!

PROPERTY DETAIL



1385 SQ FT



HIGH FOOT TRAFFIC



RESTAURANT READY

GET IN TOUCH

559-684-2728

www.AHerreraRE.com

DRE# 02240548