

Elder Creek Industrial Center

8770 Elder Creek Road, Sacramento CA 95828

Three Proposed Industrial Buildings
For Sale or Lease

CONTACT FOR MORE INFORMATION 

ZAC SWEET, SIOR
Senior Vice President

P: +1 916 717 4768
zac.sweet@cbre.com
Lic. 01352800

JEFF KVARME
First Vice President

P: +1 916 203 5257
jeff.kvarme@cbre.com
Lic. 01924968

TYLER HOWELL
Senior Associate

P: +1 916 781 4835
tyler.howell1@cbre.com
Lic. 02100245

COURTNEY LEE
Associate

P: +1 916 906 5544
courtney.lee@cbre.com
Lic. 02031694

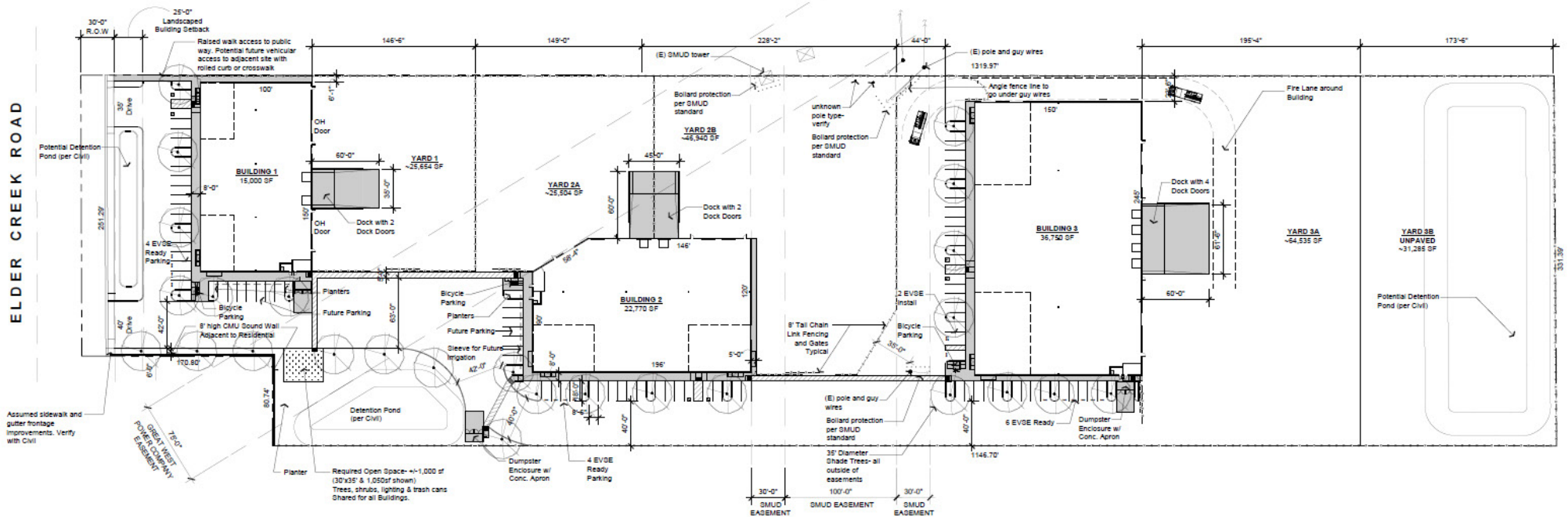
STACY LADD
Senior Asset Manager, Buzz Oates

P: +1 916 379 3847
stacyladd@buzzoates.com
Lic. 01303668

8770 Elder Creek Road Site Details

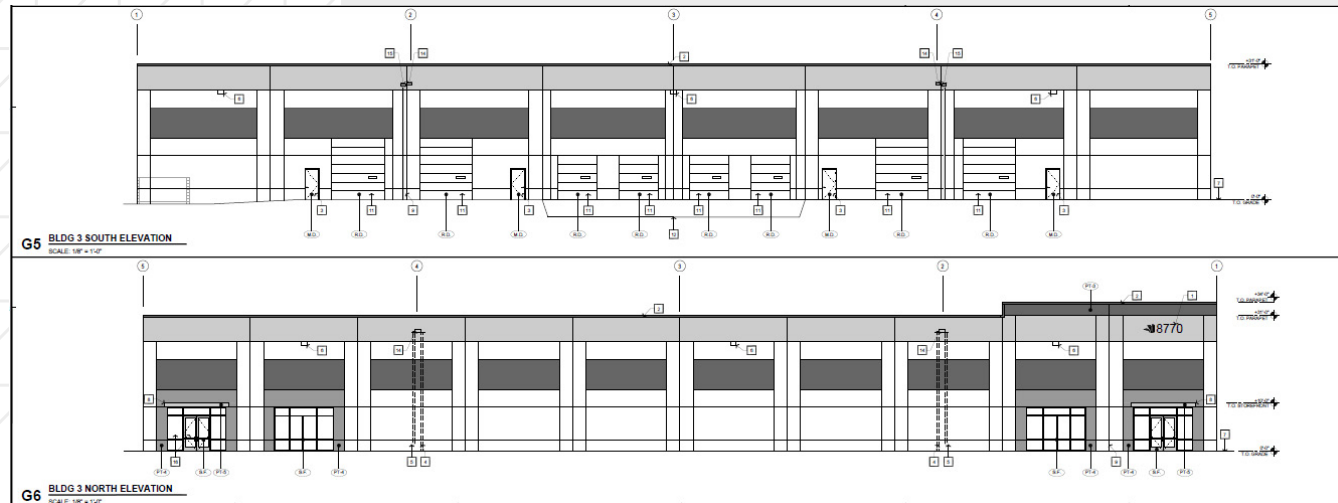
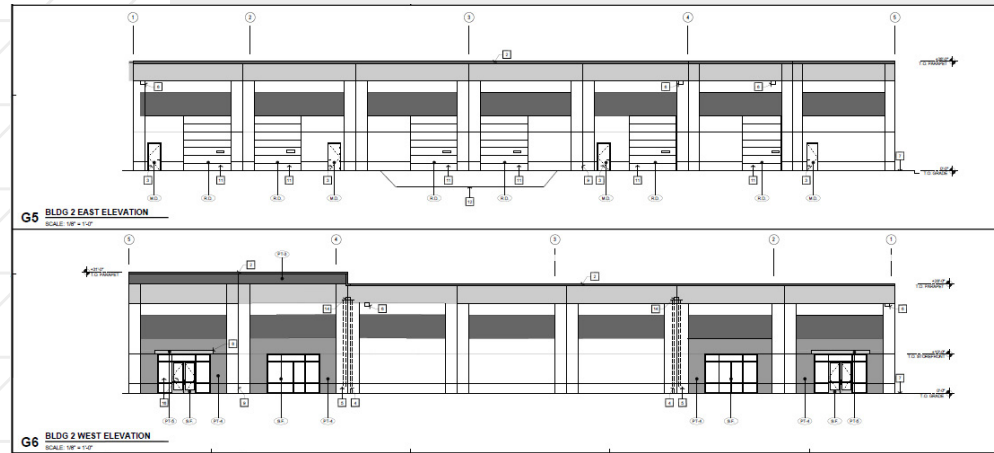
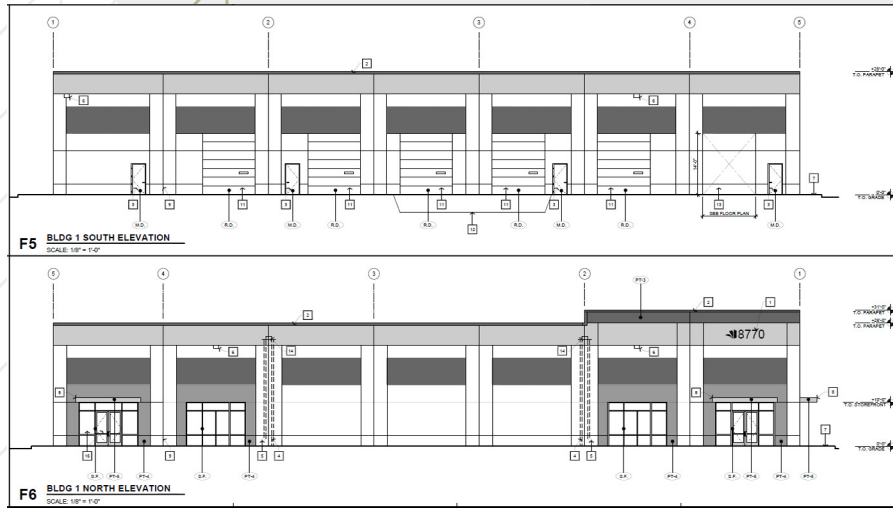
	<i>Building 1</i>	<i>Building 2</i>	<i>Building 3</i>
BUILDING SIZE	±17,000 SF	±22,550 SF	±36,750 SF
MINIMUM DIVISIBILITY	±8,500 SF	±11,275	±18,375 SF
LOT SIZE	±2.23 acres	±2.93 acres	±4.57 acres
YARD	±25,654	±72,444	±64,535
CLEAR HEIGHT	24'	24'	26'
GRADE DOORS	3	4	4
DOCK DOORS	2	2	4
ELECTRICAL	800 amps	800 amps	1,000 amps
OFFICE	±1,500 - 3,000	±2,310 - 4,620	±3,675 - 7,350
AUTO PARKING	34	45	73

- *ESFR Sprinklers*
- *Concrete Tilt-Up Construction*
- *M-1-S Light Industrial Zoning*



8770 Elder Creek Road

Proposed Elevations



FOR SALE OR LEASE



Elder Creek Industrial Center

**8770 Elder Creek Road,
Sacramento CA 95828**

**Three Proposed
Industrial Buildings**

CONTACT FOR MORE INFORMATION



BUZZ OATES

CBRE



ZAC SWEET, SIOR
Senior Vice President

P: +1916 717 4768
zac.sweet@cbre.com
Lic. 01352800

JEFF KVARME
First Vice President

P: +1916 203 5257
jeff.kvarme@cbre.com
Lic. 01924968

TYLER HOWELL
Senior Associate

P: +1916 781 4835
tyler.howell1@cbre.com
Lic. 02100245

COURTNEY LEE
Associate

P: +1916 906 5544
courtney.lee@cbre.com
Lic. 02031694

STACY LADD
Senior Asset Manager, Buzz Oates

P: +1916 379 3847
stacyladd@buzzoates.com
Lic. 01303668