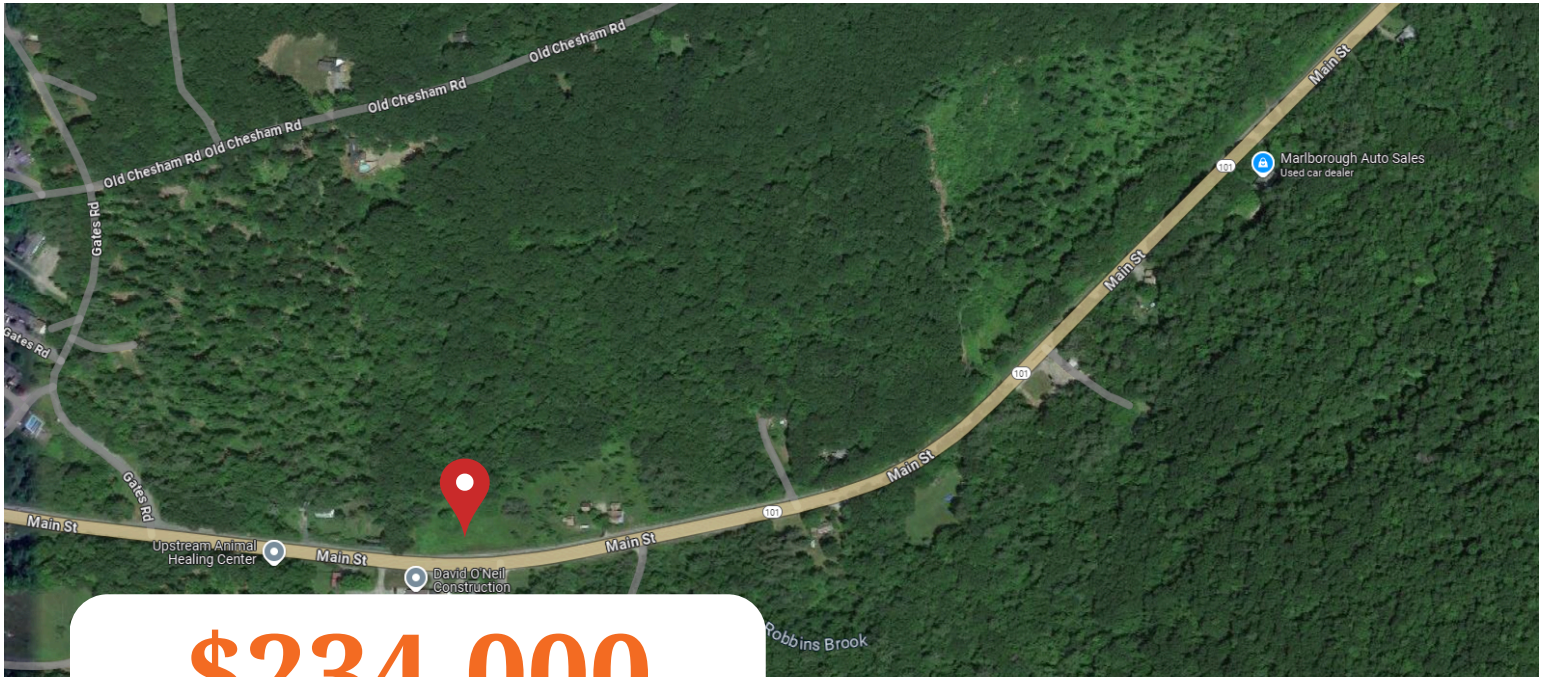


For Sale // Development Land

0 NH Route 101, Marlborough, NH



\$234,000

Property Features:

- High Visibility
- Developable Land

About:

This 12-acre parcel offers high visibility and is developable. The property location provides easy access to Nashua, Manchester, and Keene via Route 101. With open frontage along Route 101, it is zoned for commercial use in the front and rural residential in the back. The land features a mix of agricultural, business, and residential potential with a slightly sloping terrain and a forested area in the back.

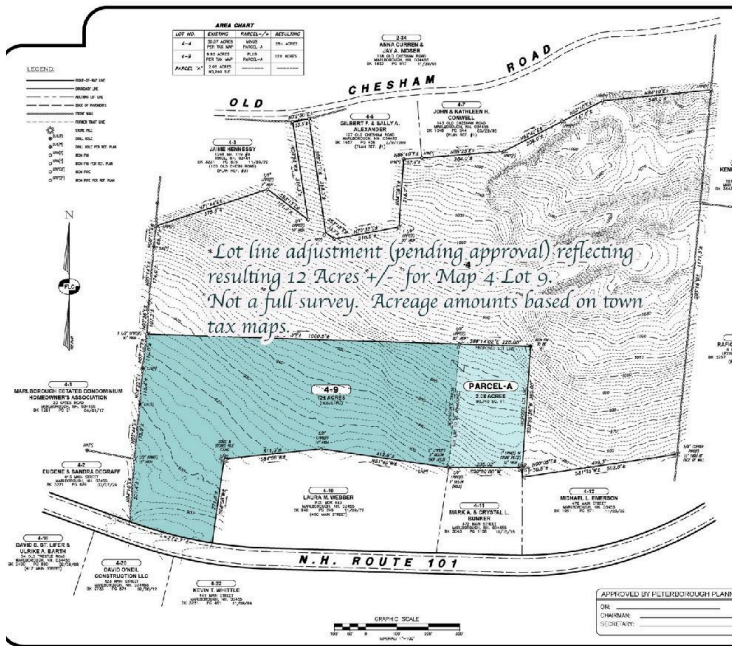


Contact Details:

- Bill Hutwelker**
- 603-313-3948
- Bill.Hutwelker@SVN.com

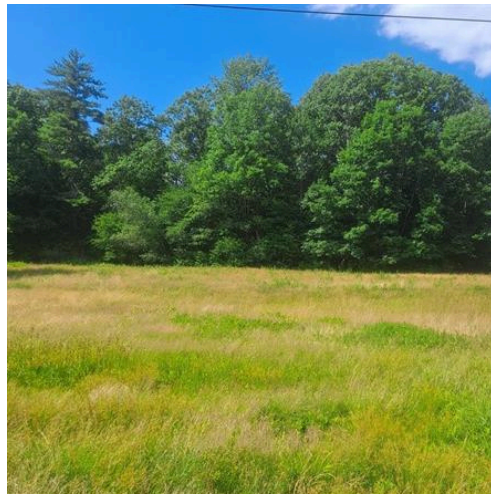
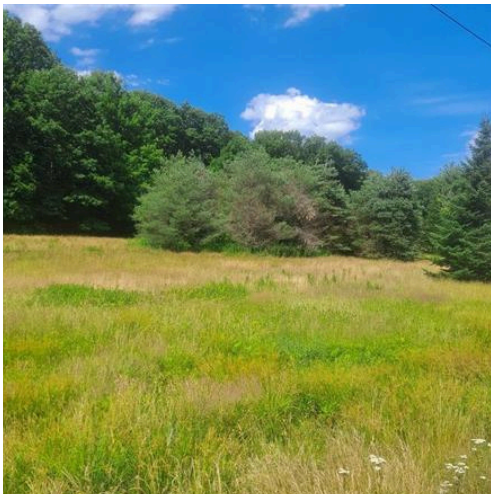
For Sale // Development Land

0 NH Route 101, Marlborough, NH



Property Highlights:

- Suitable for developing
- High visibility
- Easy access to major cities
- Open frontage on Route 101
- Mix of Agriculture and Business potential



SALE PRICE // \$234,000

LOT SIZE // 12 Acres

ZONING // Commercial and Rural
